

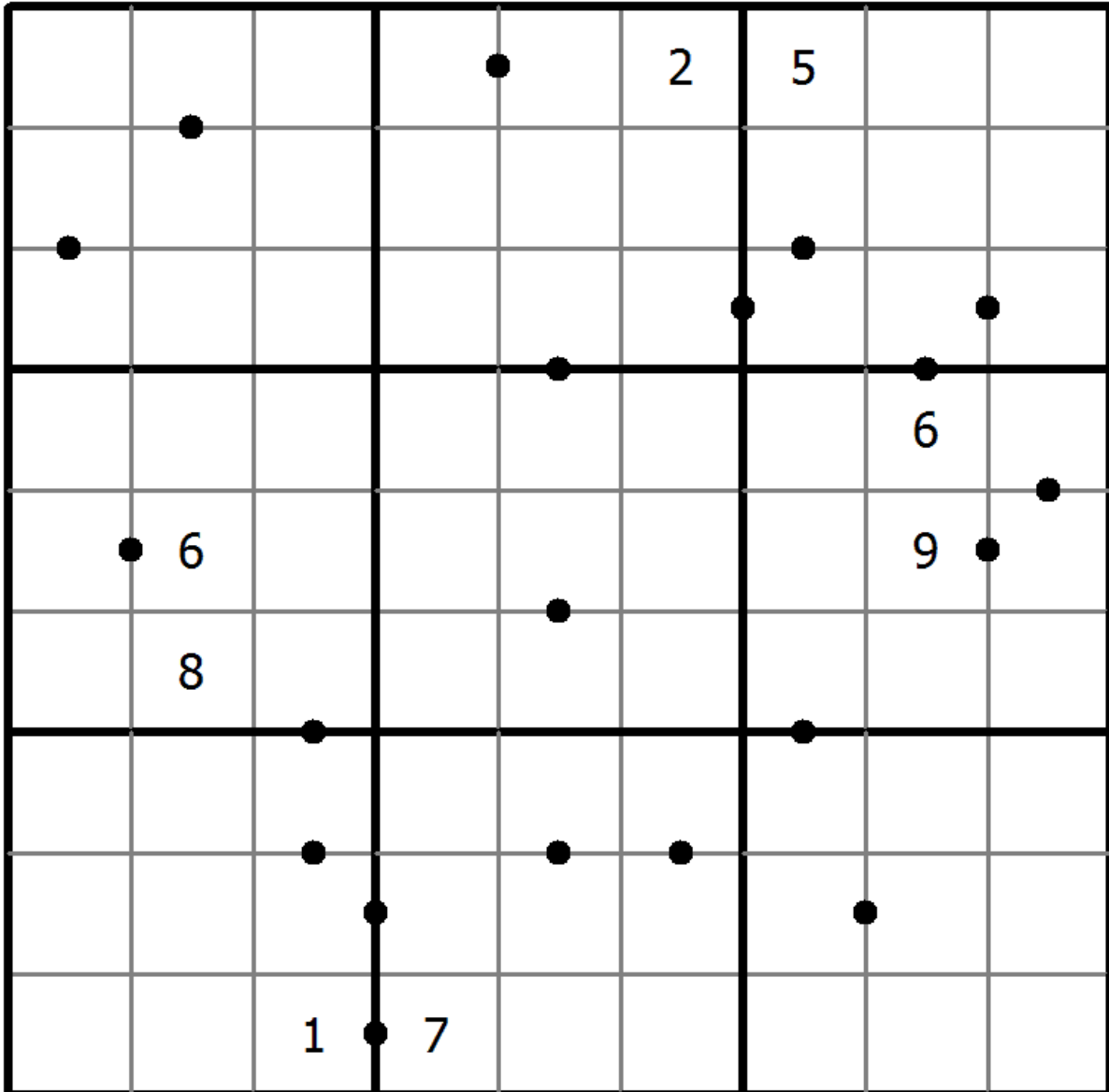
Answer 8 sudoku

Place a digit from 1 to 9 into each of the empty squares so that each digit appears exactly once in each of the rows, columns and the nine outlined 3x3 regions.

A dot between two cells indicates that the result of at least one of the basic operations (addition, subtraction, multiplication, division) of the numbers in these two cells is 8. Is the dot missing, no one of the basic operations results in an 8.



(Solution)



© sudoku.today

[Today Sudoku](https://sudoku.today/) (<https://sudoku.today/>)
[Samurai Sudoku](https://samuraisudoku.com/) (<https://samuraisudoku.com/>)

[Newdoku](https://newdoku.com/) (https://newdoku.com)
[Sudoku Puzzle](https://www.sudokupuzzle.org) (<https://www.sudokupuzzle.org>)