

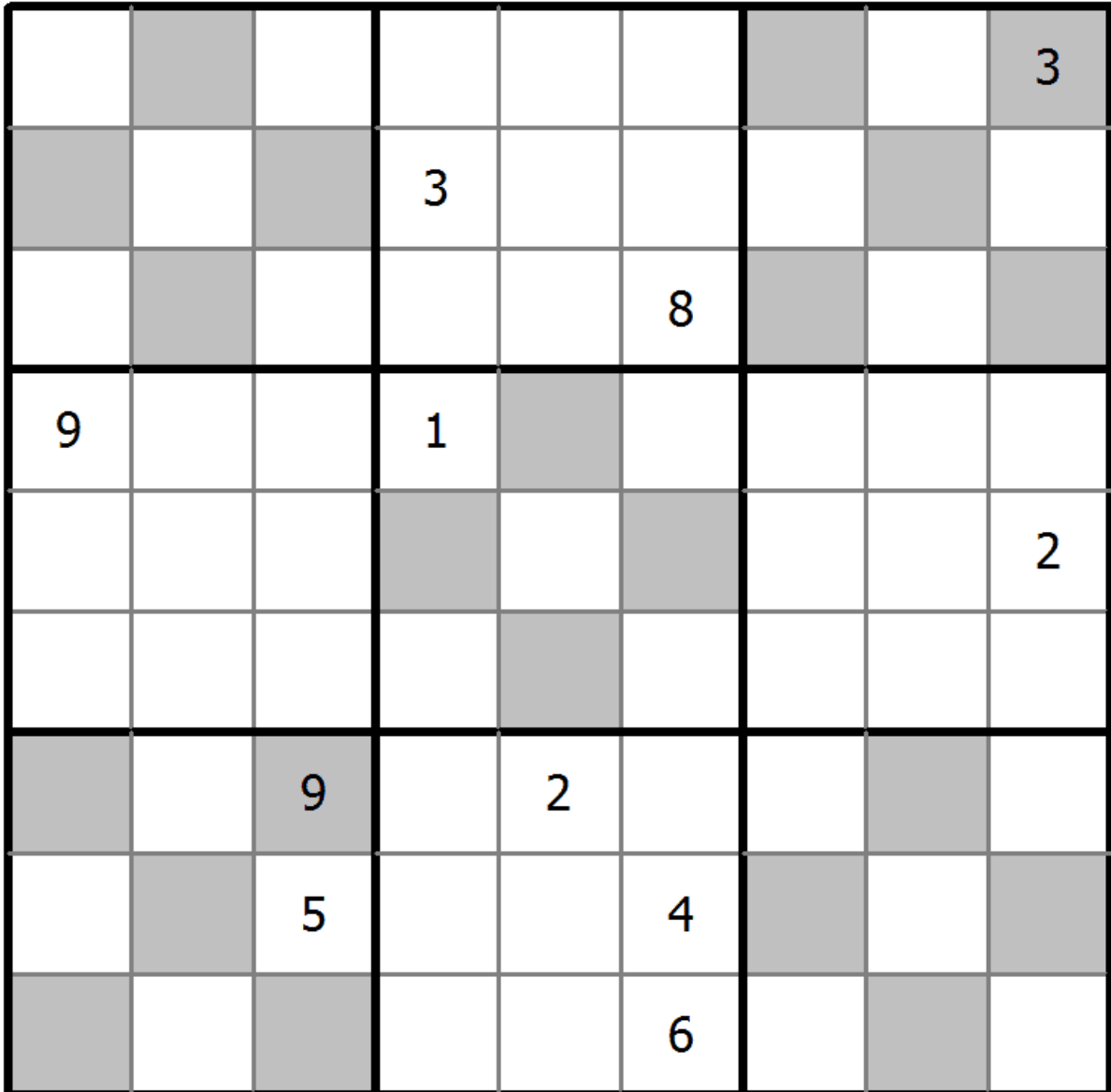
## Fortress Sudoku

Place a digit from 1 to 9 into each of the empty squares so that each digit appears exactly once in each of the rows, columns and the nine outlined 3x3 regions.

If a shaded cell and a white cell are adjacent then the digit in the shaded cell is greater.



(Solution)



© sudoku.today

[Today Sudoku](https://sudoku.today/) ( <https://sudoku.today/> )  
[Samurai Sudoku](https://samuraisudoku.com/) ( <https://samuraisudoku.com/> )

[Newdoku](https://newdoku.com/) ( [https://newdoku.com](https://newdoku.com/) )  
[Sudoku Puzzle](https://www.sudokupuzzle.org/) ( [https://www.sudokupuzzle.org](https://www.sudokupuzzle.org/) )