

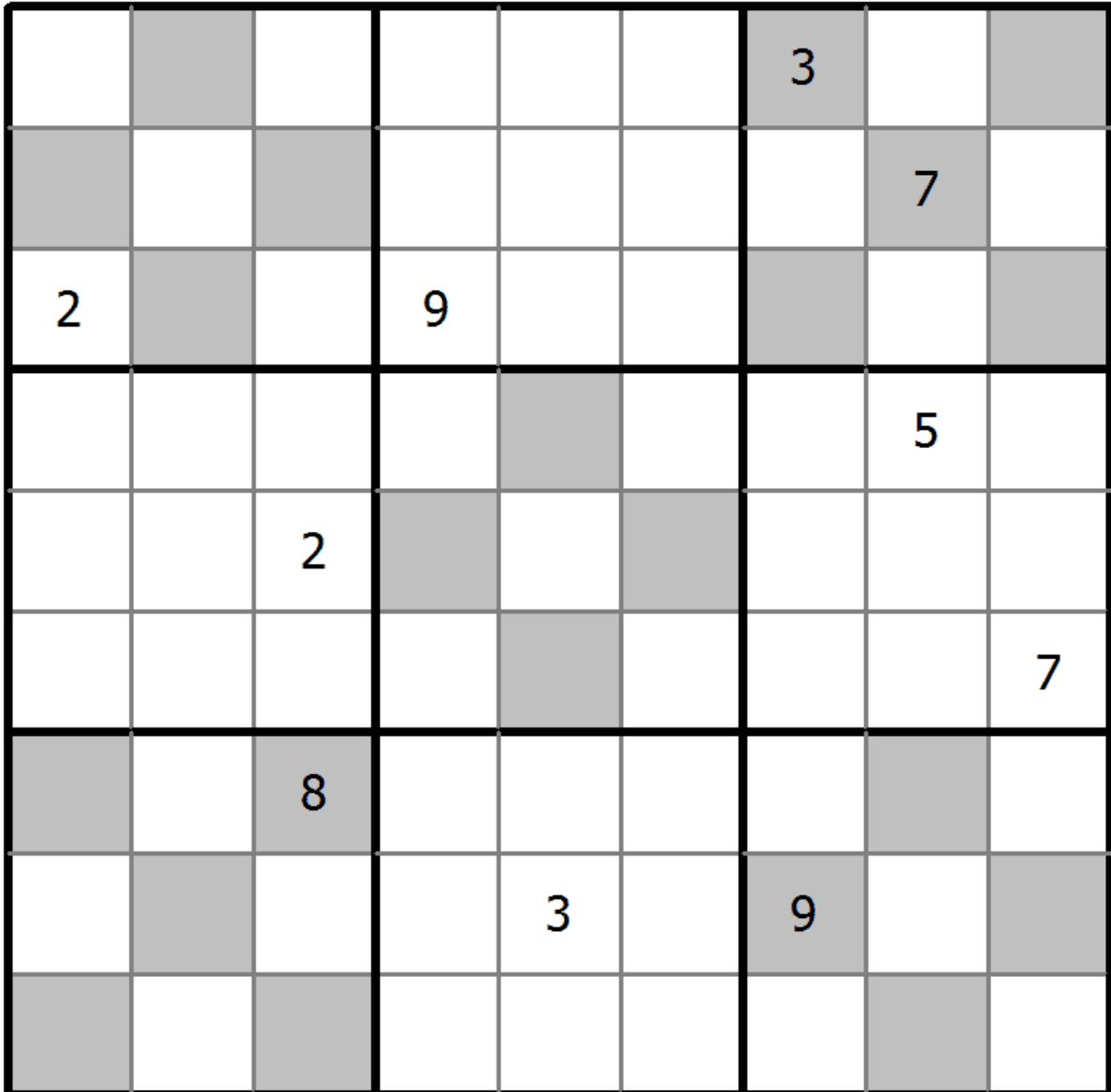
Fortress Sudoku

Place a digit from 1 to 9 into each of the empty squares so that each digit appears exactly once in each of the rows, columns and the nine outlined 3x3 regions.

If a shaded cell and a white cell are adjacent then the digit in the shaded cell is greater.



(Solution)



© sudoku.today

[Today Sudoku](https://sudoku.today/) (<https://sudoku.today/>)
[Samurai Sudoku](https://samuraisudoku.com/) (<https://samuraisudoku.com/>)

[Newdoku](https://newdoku.com/) (https://newdoku.com)
[Sudoku Puzzle](https://www.sudokupuzzle.org/) (https://www.sudokupuzzle.org)