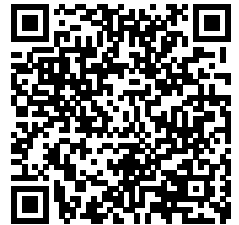


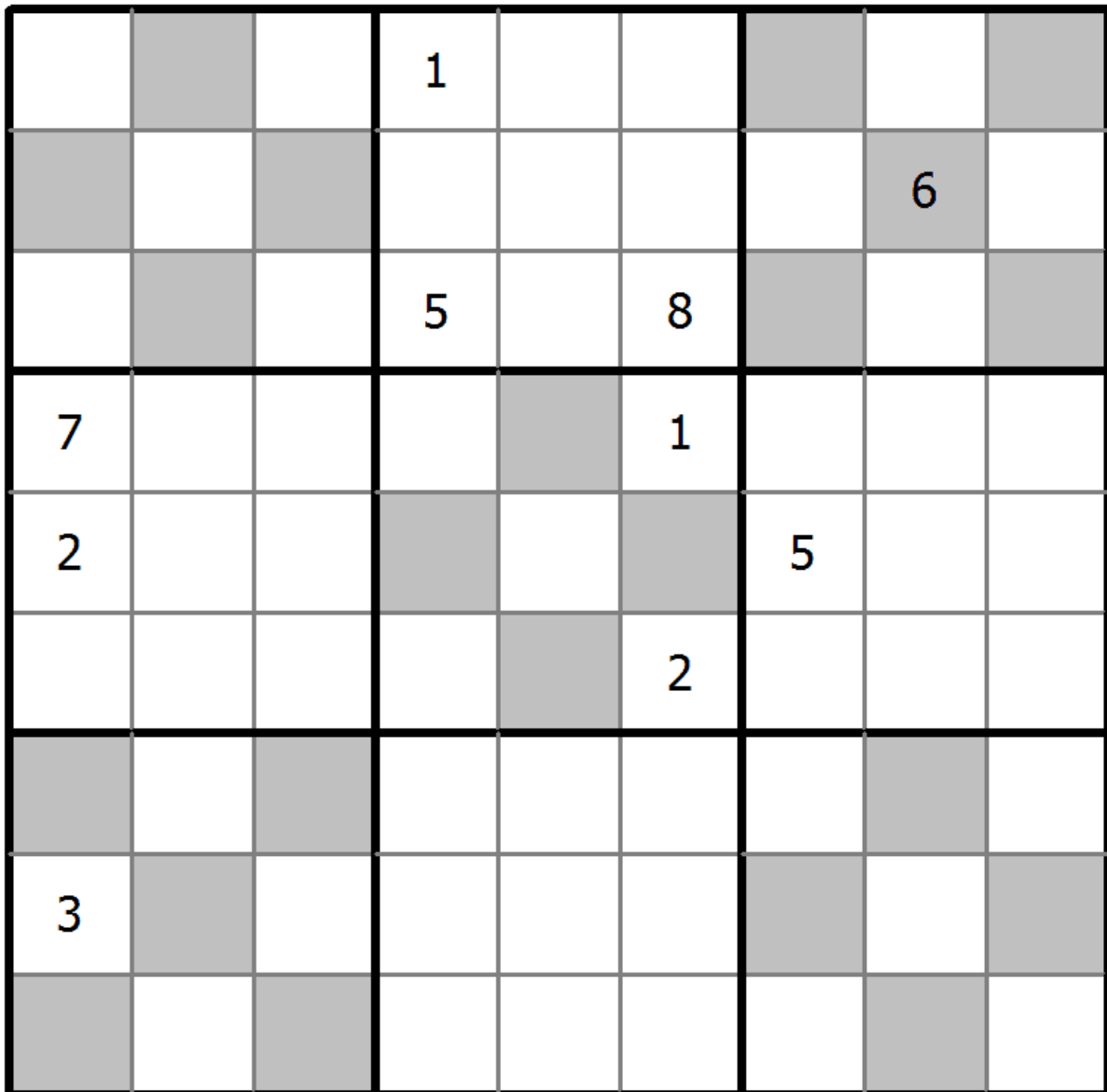
Fortress Sudoku

Place a digit from 1 to 9 into each of the empty squares so that each digit appears exactly once in each of the rows, columns and the nine outlined 3x3 regions.

If a shaded cell and a white cell are adjacent then the digit in the shaded cell is greater.



(Solution)



© sudoku.today

[Sudoku Today](https://sudoku.today) (<https://sudoku.today>)
[Samurai Sudoku](https://samuraisudoku.com) (<https://samuraisudoku.com>)

[Newdoku](https://newdoku.com) (<https://newdoku.com>)
[Sudoku Puzzle](https://www.sudoku puzzle.org) (<https://www.sudoku puzzle.org>)