

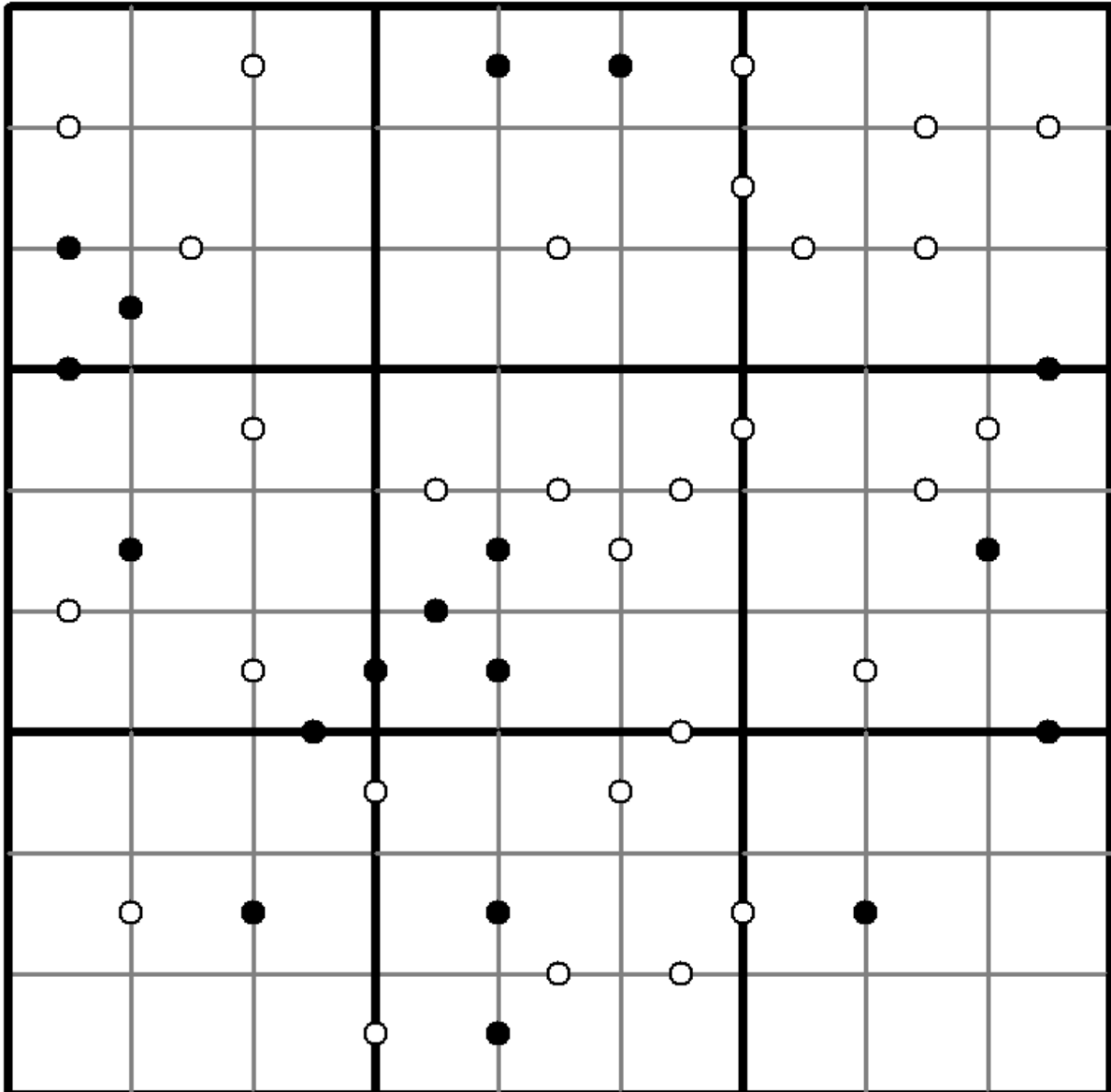
Kropki Sudoku

Place a digit from 1 to 9 into each of the empty squares so that each digit appears exactly once in each of the rows, columns and the nine outlined 3x3 regions.

If absolute difference between two digits in neighbouring cells equals 1, then they are separated by a white dot. If the digit is a half of digit in the neighbouring cell, then they are separated by black dot. The dot between 1 and 2 can be either white or black.



(Solution)



© sudoku.today

[Sudoku Today](https://sudoku.today) (<https://sudoku.today>)

[Samurai Sudoku](https://samuraisudoku.com) (<https://samuraisudoku.com>)

[Newdoku](https://newdoku.com) (<https://newdoku.com>)

[Sudoku Puzzle](https://www.sudokupuzzle.org) (<https://www.sudokupuzzle.org>)