

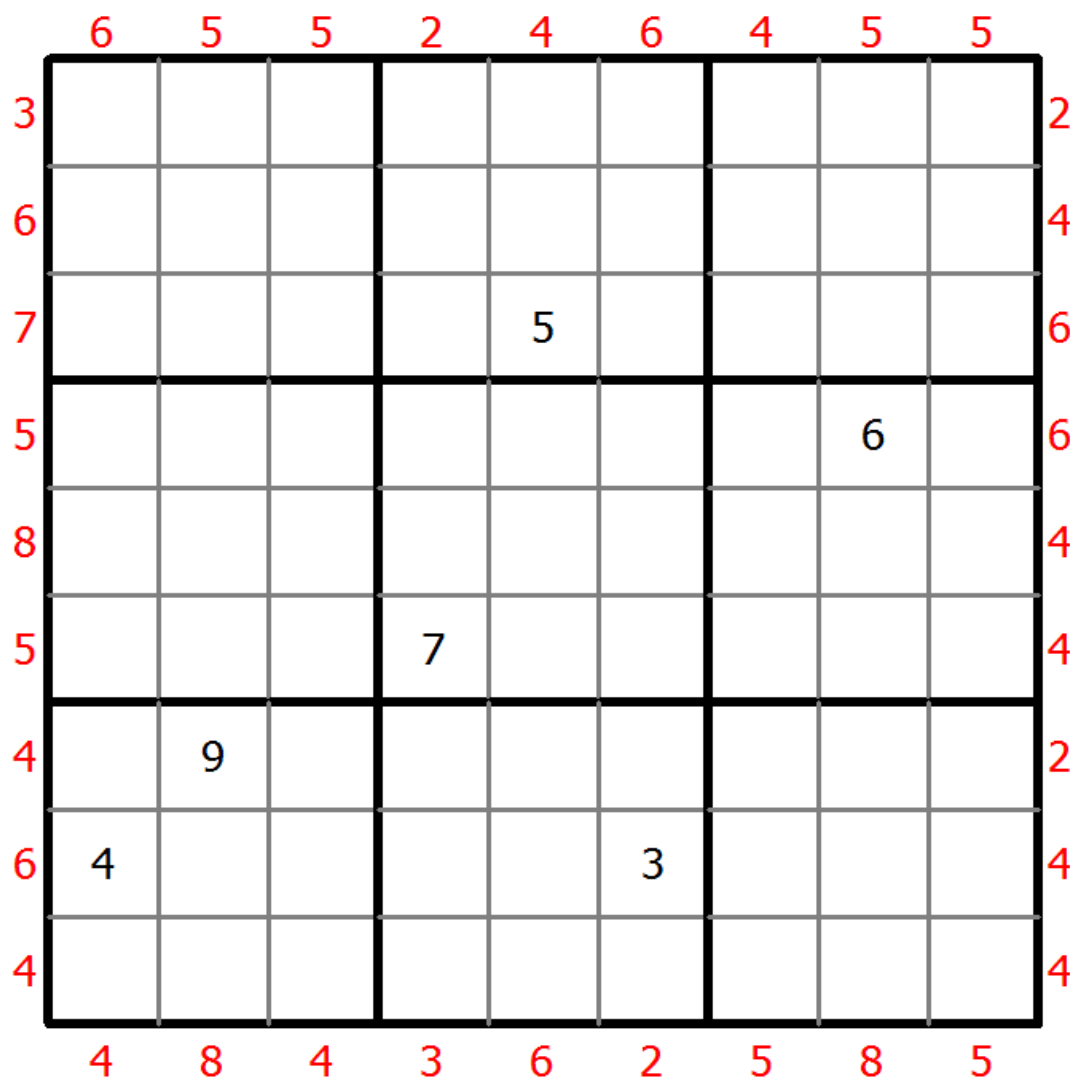
## Maximin Sudoku

Place a digit from 1 to 9 into each of the empty squares so that each digit appears exactly once in each of the rows, columns and the nine outlined 3x3 regions.

A number at the edge of the diagram indicates the difference between the highest and the lowest number in the first three cells in the corresponding row or column.



(Solution)



© sudoku.today

[Sudoku Today](https://sudoku.today) ( <https://sudoku.today> )

[Samurai Sudoku](https://samuraisudoku.com) ( <https://samuraisudoku.com> )

[Newdoku](https://newdoku.com) ( <https://newdoku.com> )

[Sudoku Puzzle](https://www.sudoku puzzle.org) ( <https://www.sudoku puzzle.org> )