

Extra Regions Sudoku

Place a digit from 1 to 9 into each of the empty squares so that each digit appears exactly once in each of the rows, columns and the nine outlined 3x3 regions.

The connected shaded cells contain each digit from 1 to 9.



(Solution)

3				1	9	8		
2			3					7
	5		8			4		
	6				2	5		
		9	6				4	
		2			8		1	
6					4			9
		8	7	5				4

© sudoku.today

[Sudoku Today](https://sudoku.today) (<https://sudoku.today>)
[Samurai Sudoku](https://samuraisudoku.com) (<https://samuraisudoku.com>)

[Newdoku](https://newdoku.com) (<https://newdoku.com>)
[Sudoku Puzzle](https://www.sudoku-puzzle.org) (<https://www.sudoku-puzzle.org>)

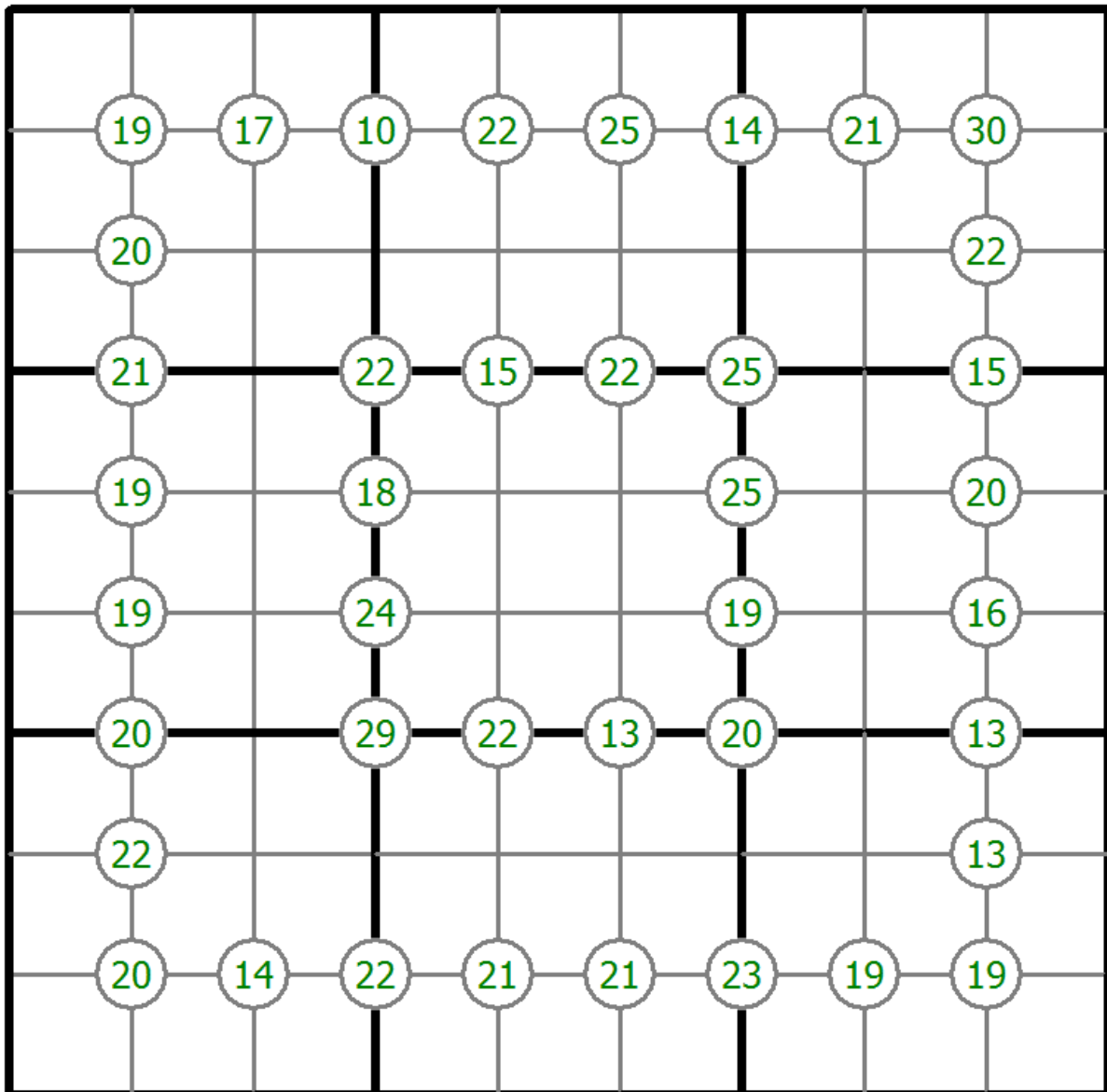
Group Sum Sudoku

Place a digit from 1 to 9 into each of the empty squares so that each digit appears exactly once in each of the rows, columns and the nine outlined 3x3 regions.

Each number at the intersection of four cells is the sum of digits in those four cells.



(Solution)



© sudoku.today

[Sudoku Today](https://sudoku.today) (<https://sudoku.today>)
[Samurai Sudoku](https://samuraisudoku.com) (<https://samuraisudoku.com>)

[Newdoku](https://newdoku.com) (<https://newdoku.com>)
[Sudoku Puzzle](https://www.sudoku-puzzle.org) (<https://www.sudoku-puzzle.org>)

Windoku

Place a digit from 1 to 9 into each of the empty squares so that each digit appears exactly once in each of the rows, columns and the nine outlined 3x3 regions.

Each of the four shaded 3x3 boxes contains each digit from 1 to 9.



(Solution)

			1				8	
5			3		8			
	6			2				
1	4	7					5	
2	9		6		3		1	8
	3					7	2	9
				8			3	
			7		5			1
	8				6			

© sudoku.today

[Sudoku Today](https://sudoku.today) (<https://sudoku.today>)

[Samurai Sudoku](https://samuraisudoku.com) (<https://samuraisudoku.com>)

[Newdoku](https://newdoku.com) (<https://newdoku.com>)

[Sudoku Puzzle](https://www.sudoku-puzzle.org) (<https://www.sudoku-puzzle.org>)

Hybrid Sudoku (Consecutive Pairs + Sum Frame)

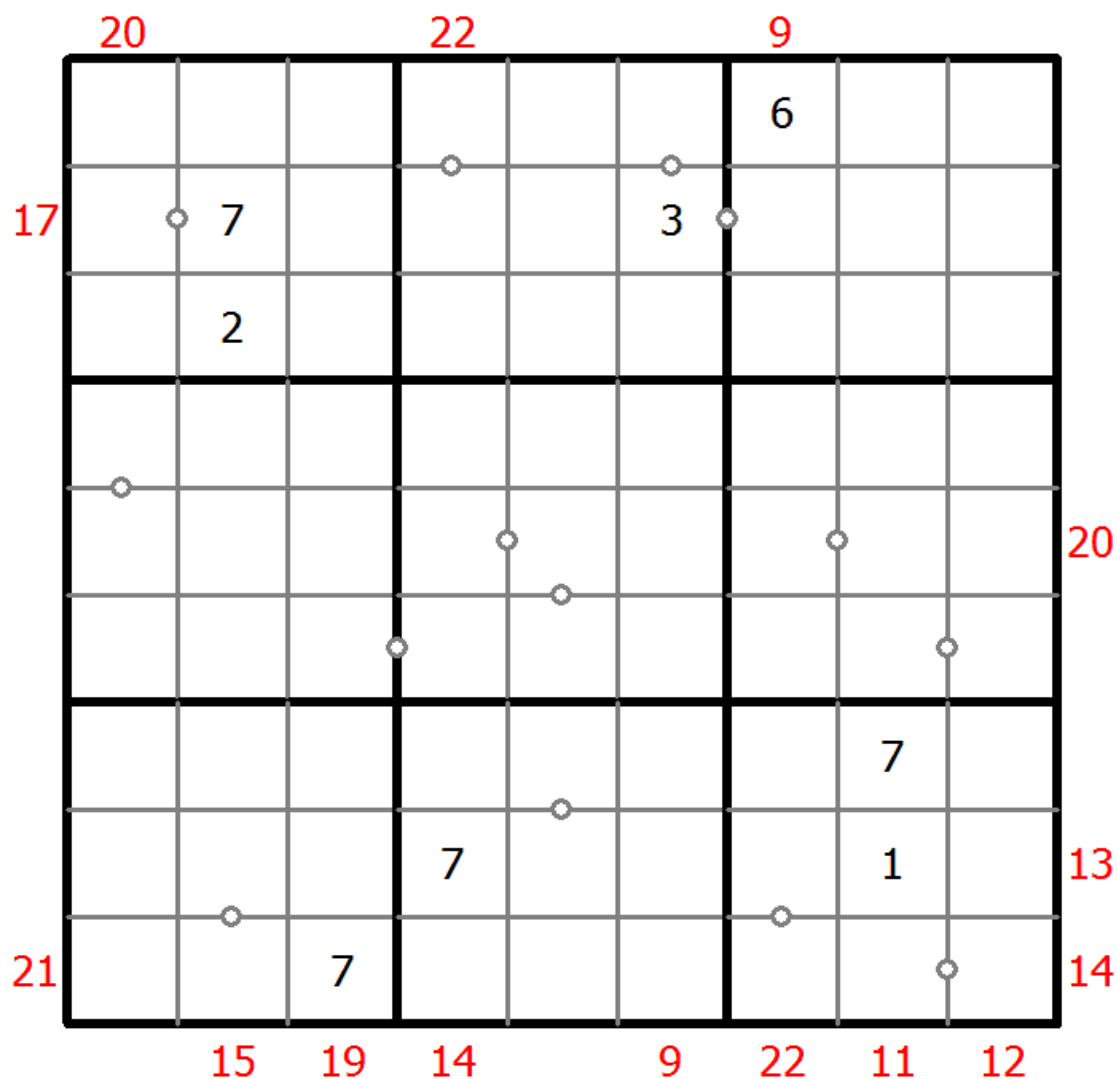
Place a digit from 1 to 9 into each of the empty squares so that each digit appears exactly once in each of the rows, columns and the nine outlined 3x3 regions.

There are some dots between cells. The numbers on each side of a dot must always be consecutive. Not all possible dots are marked.

Digits outside the grid indicate the sum of the first 3 digits in the corresponding direction.



(Solution)



© sudoku.today

[Sudoku Today](https://sudoku.today) (<https://sudoku.today>)

[Samurai Sudoku](https://samuraisudoku.com) (<https://samuraisudoku.com>)

[Newdoku](https://newdoku.com) (<https://newdoku.com>)

[Sudoku Puzzle](https://www.sudoku puzzle.org) (<https://www.sudoku puzzle.org>)

Multi Diagonal Sudoku

Place a digit from 1 to 9 into each of the empty squares so that each digit appears exactly once in each of the rows, columns and the nine outlined 3x3 regions.

Digits do not repeat along the marked diagonals.



(Solution)

	3					9		7
2							3	4
	9		4	5			1	
8								
								5
	2			1	6		8	
5	1							3
4		6					2	

© sudoku.today

[Sudoku Today](https://sudoku.today) (<https://sudoku.today>)
[Samurai Sudoku](https://samuraisudoku.com) (<https://samuraisudoku.com>)

[Newdoku](https://newdoku.com) (<https://newdoku.com>)
[Sudoku Puzzle](https://www.sudoku-puzzle.org) (<https://www.sudoku-puzzle.org>)

Even Sudoku

Place a digit from 1 to 9 into each of the empty squares so that each digit appears exactly once in each of the rows, columns and the nine outlined 3x3 regions.

Cells with shaded squares contain even digits.



(Solution)

								4
2		7					5	6
8		5					9	
			4		8			
				7	9			
1		3	6					
						4		
								7
		8	7				2	1

© sudoku.today

[Sudoku Today](https://sudoku.today) (<https://sudoku.today>)
[Samurai Sudoku](https://samuraisudoku.com) (<https://samuraisudoku.com>)

[Newdoku](https://newdoku.com) (<https://newdoku.com>)
[Sudoku Puzzle](https://www.sudoku-puzzle.org) (<https://www.sudoku-puzzle.org>)

Anti Knight Sudoku

Place a digit from 1 to 9 into each of the empty squares so that each digit appears exactly once in each of the rows, columns and the nine outlined 3x3 regions.

The same numbers are not chess-knight move connected.



(Solution)

			8			7		
				5		1		
	9			3				8
	5							2
2								6
6							8	
1				6			9	
		2		1				
		8			5			

© sudoku.today

[Sudoku Today](https://sudoku.today) (<https://sudoku.today>)
[Samurai Sudoku](https://samuraisudoku.com) (<https://samuraisudoku.com>)

[Newdoku](https://newdoku.com) (<https://newdoku.com>)
[Sudoku Puzzle](https://www.sudoku-puzzle.org) (<https://www.sudoku-puzzle.org>)

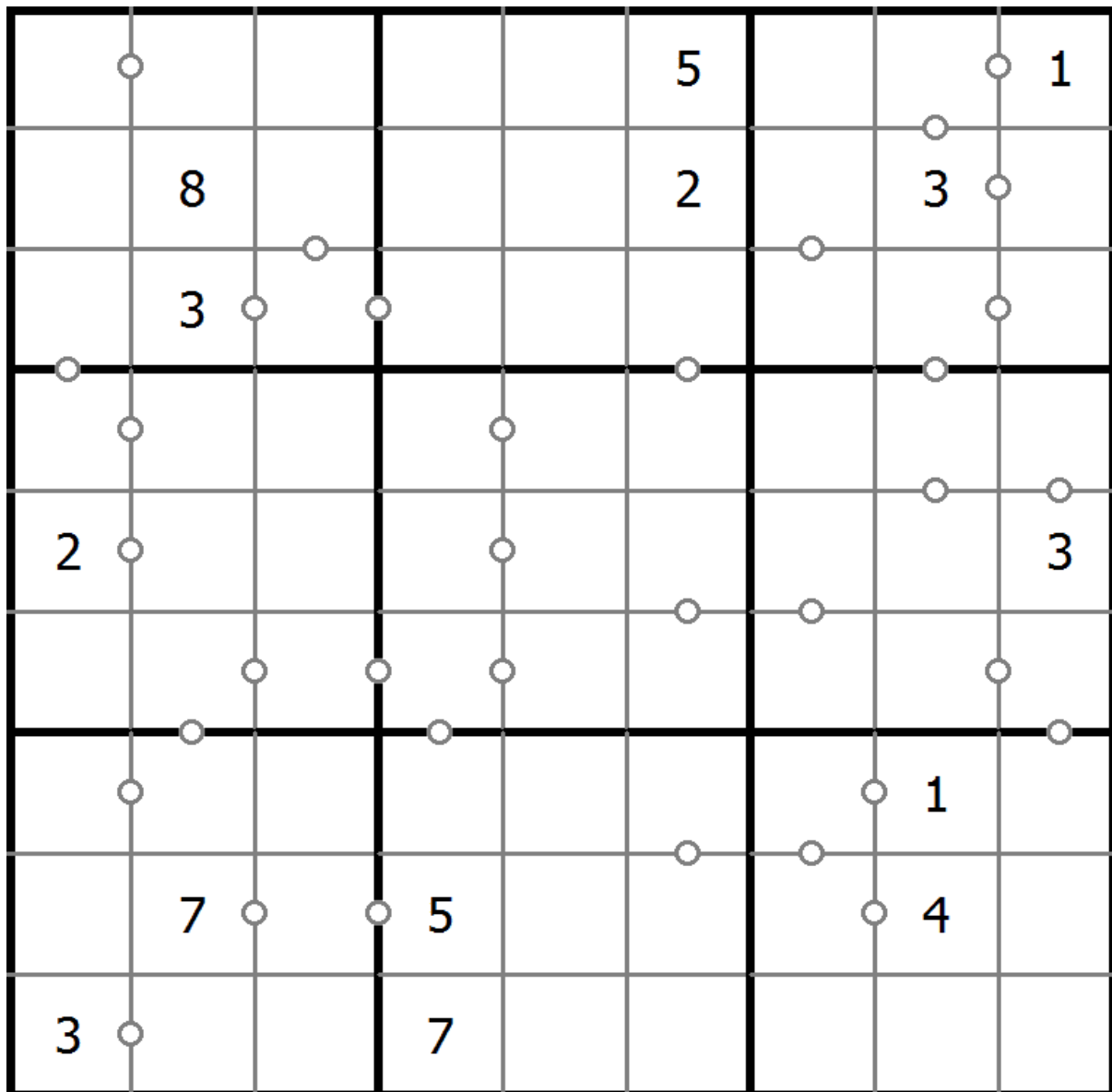
Consecutive Sudoku

Place a digit from 1 to 9 into each of the empty squares so that each digit appears exactly once in each of the rows, columns and the nine outlined 3x3 regions.

There are some dots between cells. The numbers on each side of a dot must always be consecutive. All possible dots are marked.



(Solution)



© sudoku.today

[Sudoku Today](https://sudoku.today) (<https://sudoku.today>)
[Samurai Sudoku](https://samuraisudoku.com) (<https://samuraisudoku.com>)

[Newdoku](https://newdoku.com) (<https://newdoku.com>)
[Sudoku Puzzle](https://www.sudoku-puzzle.org) (<https://www.sudoku-puzzle.org>)

Mirror Sudoku

Place a digit from 1 to 9 into each of the empty squares so that each digit appears exactly once in each of the rows, columns and the nine outlined 3x3 regions.

The four corner boxes contain the same digit in symmetric positions about the centre.



(Solution)

					4			
	5				3			
		2			8			6
			7	8		6	4	5
				3				
8	4	6		1	2			
6			8			2		
			3				5	
			2					

© sudoku.today

[Sudoku Today](https://sudoku.today) (<https://sudoku.today>)
[Samurai Sudoku](https://samuraisudoku.com) (<https://samuraisudoku.com>)

[Newdoku](https://newdoku.com) (<https://newdoku.com>)
[Sudoku Puzzle](https://www.sudoku puzzle.org) (<https://www.sudoku puzzle.org>)

Extra Regions Sudoku

Place a digit from 1 to 9 into each of the empty squares so that each digit appears exactly once in each of the rows, columns and the nine outlined 3x3 regions.

The connected shaded cells contain each digit from 1 to 9.



(Solution)

2		9		1		6		
6				5				
3		4	6				2	
9								
7								1
								6
	6				5	7		3
				3				8
		5		7		9		2

© sudoku.today

[Sudoku Today](https://sudoku.today) (<https://sudoku.today>)

[Samurai Sudoku](https://samuraisudoku.com) (<https://samuraisudoku.com>)

[Newdoku](https://newdoku.com) (<https://newdoku.com>)

[Sudoku Puzzle](https://www.sudokupuzzle.org) (<https://www.sudokupuzzle.org>)

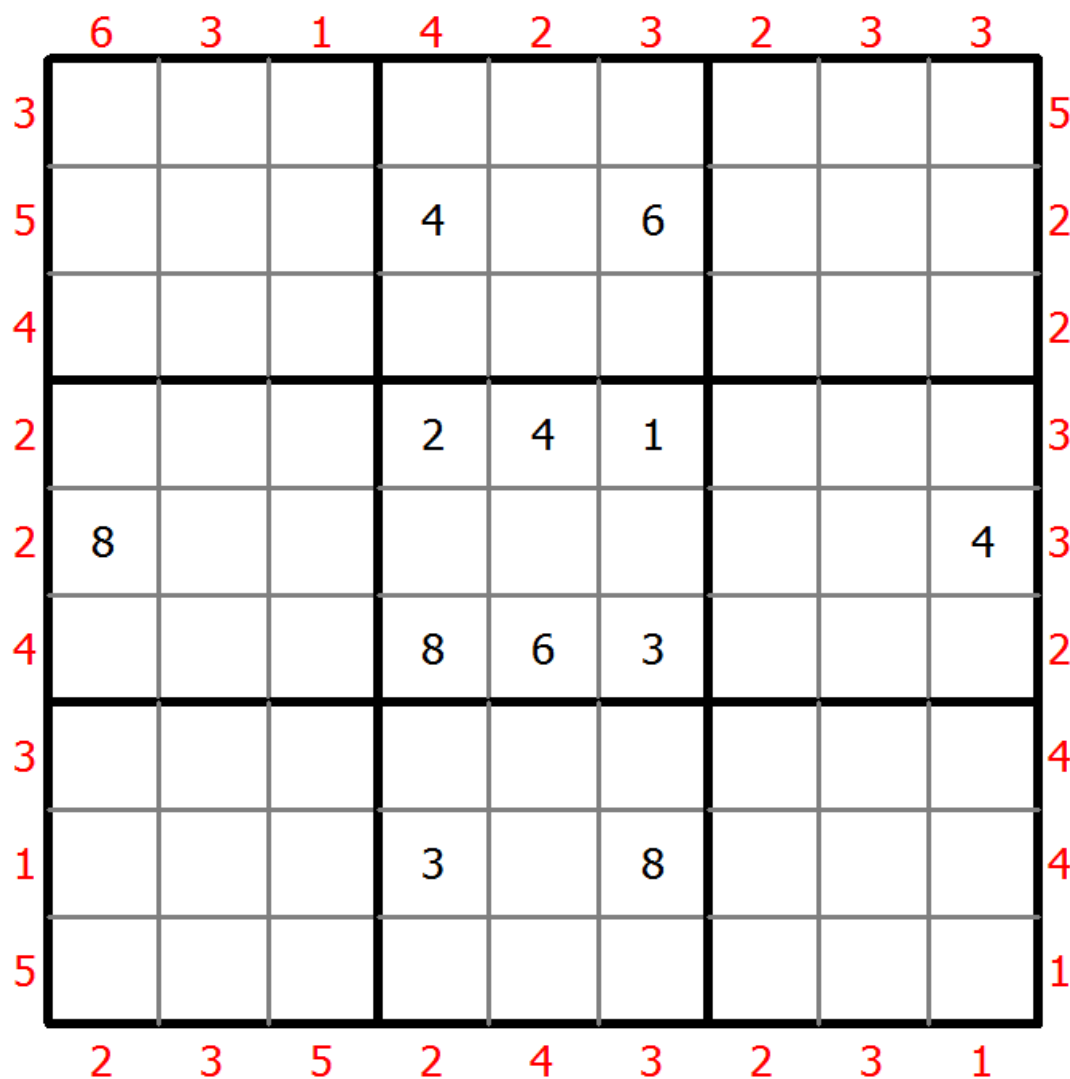
Skyscrapers Sudoku

Place a digit from 1 to 9 into each of the empty squares so that each digit appears exactly once in each of the rows, columns and the nine outlined 3x3 regions.

Consider each number to be the height of a building. The numbers outside the grid indicate how many buildings can be seen when looking in that direction (taller buildings conceal smaller buildings behind them).



(Solution)



© sudoku.today

[Sudoku Today](https://sudoku.today) (<https://sudoku.today>)

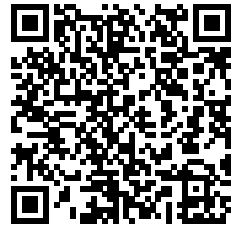
[Samurai Sudoku](https://samuraisudoku.com) (<https://samuraisudoku.com>)

[Newdoku](https://newdoku.com) (<https://newdoku.com>)

[Sudoku Puzzle](https://www.sudoku-puzzle.org) (<https://www.sudoku-puzzle.org>)

Classic Sudoku

Place a digit from 1 to 9 into each of the empty squares so that each digit appears exactly once in each of the rows, columns and the nine outlined 3x3 regions.



(Solution)

					1			
1			6	7		5		
			2			4	8	
5		4			2			3
	3						1	
7			1			6		2
	4	9			7			
		6		5	9			8
			3					

© sudoku.today

[Sudoku Today](https://sudoku.today) (<https://sudoku.today>)

[Samurai Sudoku](https://samuraisudoku.com) (<https://samuraisudoku.com>)

[Newdoku](https://newdoku.com) (<https://newdoku.com>)

[Sudoku Puzzle](https://www.sudoku puzzle.org) (<https://www.sudoku puzzle.org>)

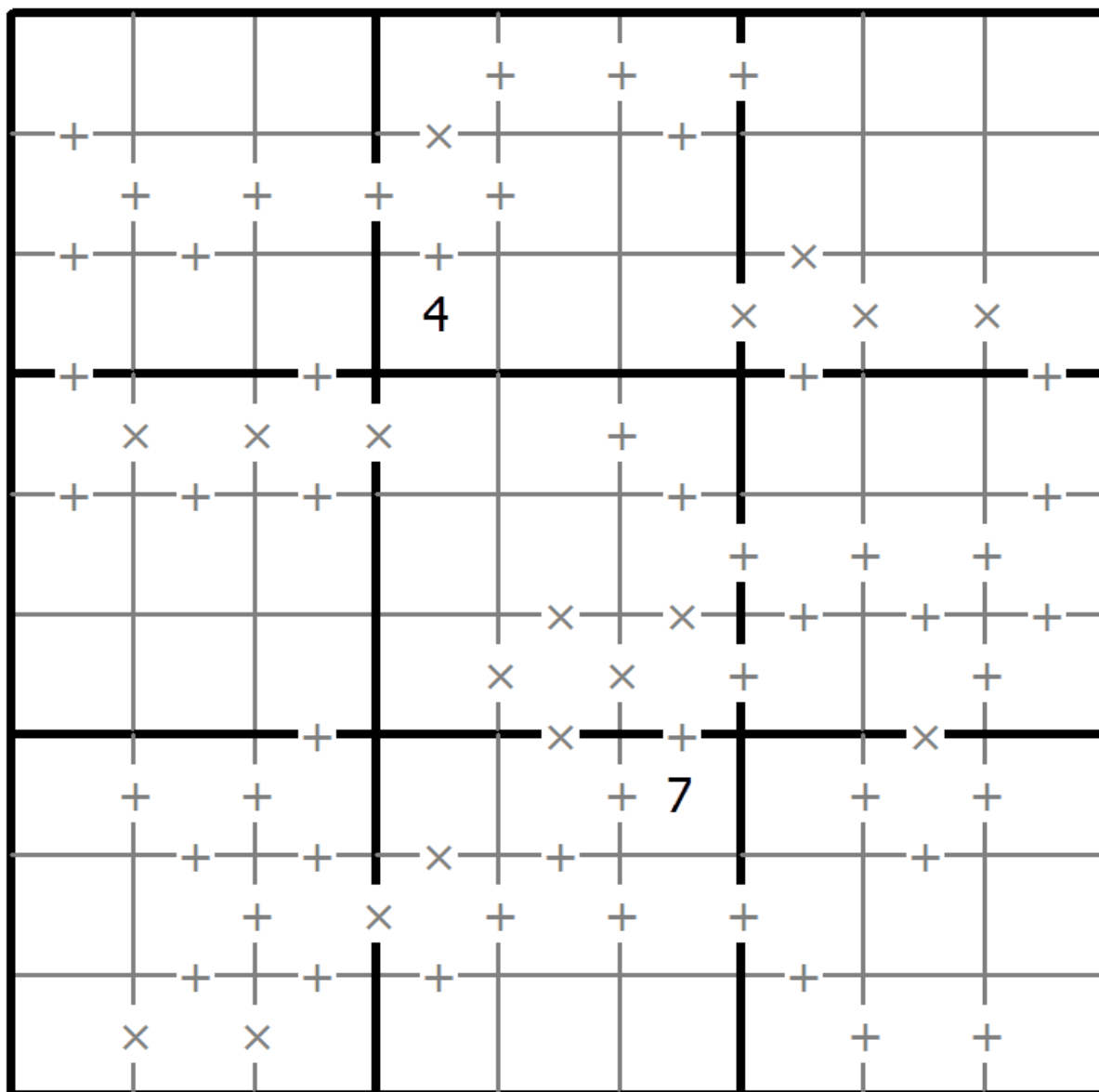
Makodoku

Place a digit from 1 to 9 into each of the empty squares so that each digit appears exactly once in each of the rows, columns and the nine outlined 3x3 regions.

A cross between two cells indicates that the product of the numbers in these cells is less than 10. A plus between two cells indicates that the sum of the numbers in these cells is less than 10. If the sum and product are less than 10, then there is a cross between these cells. If there is no sign between two cells, then both sum and product are at least 10.



(Solution)



© sudoku.today

[Sudoku Today](https://sudoku.today) (<https://sudoku.today>)
[Samurai Sudoku](https://samuraisudoku.com) (<https://samuraisudoku.com>)

[Newdoku](https://newdoku.com) (<https://newdoku.com>)
[Sudoku Puzzle](https://www.sudoku-puzzle.org) (<https://www.sudoku-puzzle.org>)

Hybrid Sudoku (X Sums + Greater Than)

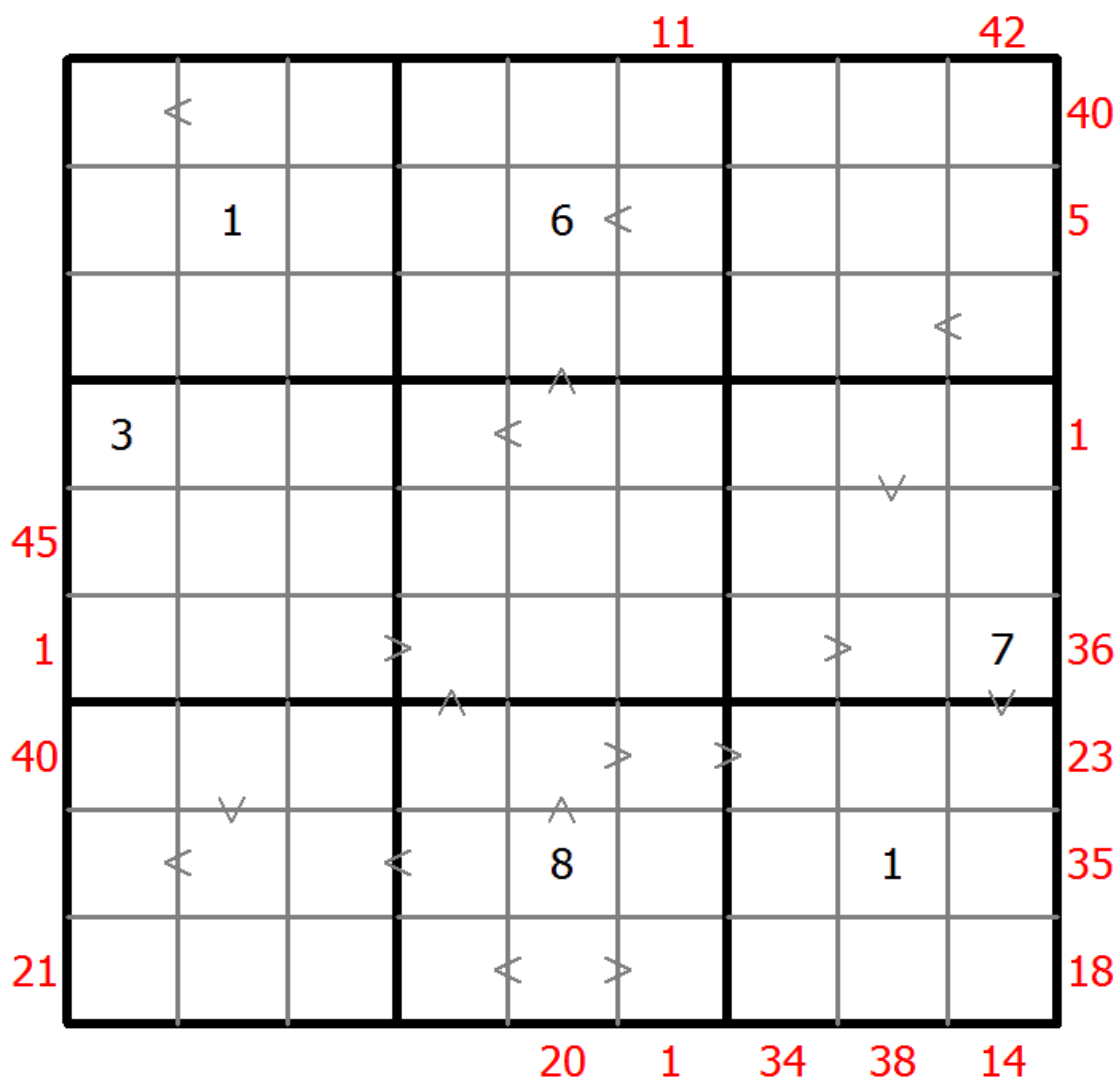
Place a digit from 1 to 9 into each of the empty squares so that each digit appears exactly once in each of the rows, columns and the nine outlined 3x3 regions.

Each number outside the grid is the sum of the first X numbers placed in the corresponding direction, where X is equal to the first number placed in that direction.



(Solution)

Digits have to be placed in accordance with the "greater than" signs.



© sudoku.today

[Sudoku Today](https://sudoku.today) (<https://sudoku.today>)

[Samurai Sudoku](https://samuraisudoku.com) (<https://samuraisudoku.com>)

[Newdoku](https://newdoku.com) (<https://newdoku.com>)

[Sudoku Puzzle](https://www.sudoku-puzzle.org) (<https://www.sudoku-puzzle.org>)

Sum Frame Sudoku

Place a digit from 1 to 9 into each of the empty squares so that each digit appears exactly once in each of the rows, columns and the nine outlined 3x3 regions.

Digits outside the grid indicate the sum of the first 3 digits in the corresponding direction.



(Solution)

	17		12		22				18		15	
17	6		3			4						14
			5			6						
					2							23
		4			3	8						17
16				4		7						9
13				2	6			4				
					5							
				6				5				
				7				4		3		13
	13	9			17			16	12			

© sudoku.today

[Sudoku Today](https://sudoku.today) (<https://sudoku.today>)

[Samurai Sudoku](https://samuraisudoku.com) (<https://samuraisudoku.com>)

[Newdoku](https://newdoku.com) (<https://newdoku.com>)

[Sudoku Puzzle](https://www.sudoku puzzle.org) (<https://www.sudoku puzzle.org>)

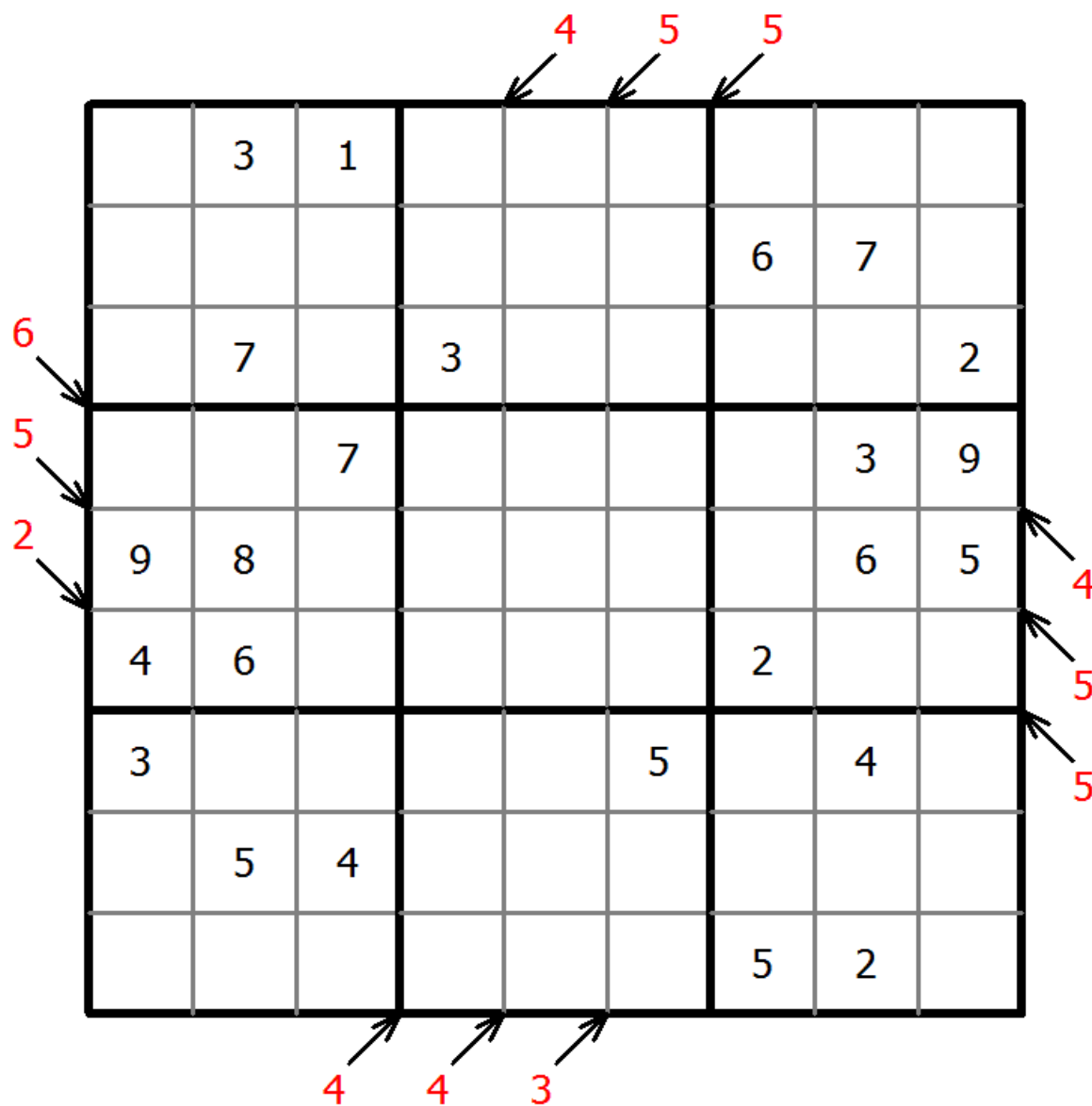
Count different Sudoku

Place a digit from 1 to 9 into each of the empty squares so that each digit appears exactly once in each of the rows, columns and the nine outlined 3x3 regions.

Arrows and numbers outside gridding means how many different numbers in corresponding direction grid.



(Solution)



© sudoku.today

[Sudoku Today](https://sudoku.today) (<https://sudoku.today>)
[Samurai Sudoku](https://samuraisudoku.com) (<https://samuraisudoku.com>)

[Newdoku](https://newdoku.com) (<https://newdoku.com>)
[Sudoku Puzzle](https://www.sudoku puzzle.org) (<https://www.sudoku puzzle.org>)

Color Sudoku

Place a digit from 1 to 9 into each of the empty squares so that each digit appears exactly once in each of the rows, columns and the nine outlined 3x3 regions.

Apply Classic Sudoku rules. Within each coloured region each digit must appear exactly once.



(Solution)

		1		5			8	
	4				9		2	6
						3		5
			1		7			8
6								4
7			8		5			
8		9						
1	6		9				5	
	2			7		4		

© sudoku.today

[Sudoku Today](https://sudoku.today) (<https://sudoku.today>)

[Samurai Sudoku](https://samuraisudoku.com) (<https://samuraisudoku.com>)

[Newdoku](https://newdoku.com) (<https://newdoku.com>)

[Sudoku Puzzle](https://www.sudoku puzzle.org) (<https://www.sudoku puzzle.org>)

Extra Regions Sudoku

Place a digit from 1 to 9 into each of the empty squares so that each digit appears exactly once in each of the rows, columns and the nine outlined 3x3 regions.

The connected shaded cells contain each digit from 1 to 9.



(Solution)

		7	2	1				8
					9	2	3	
				8				9
4	7							
	5			7			6	
							9	1
7				4				
	4	9	3					
5				9	6	1		

© sudoku.today

[Sudoku Today](https://sudoku.today) (<https://sudoku.today>)

[Samurai Sudoku](https://samuraisudoku.com) (<https://samuraisudoku.com>)

[Newdoku](https://newdoku.com) (<https://newdoku.com>)

[Sudoku Puzzle](https://www.sudoku puzzle.org) (<https://www.sudoku puzzle.org>)

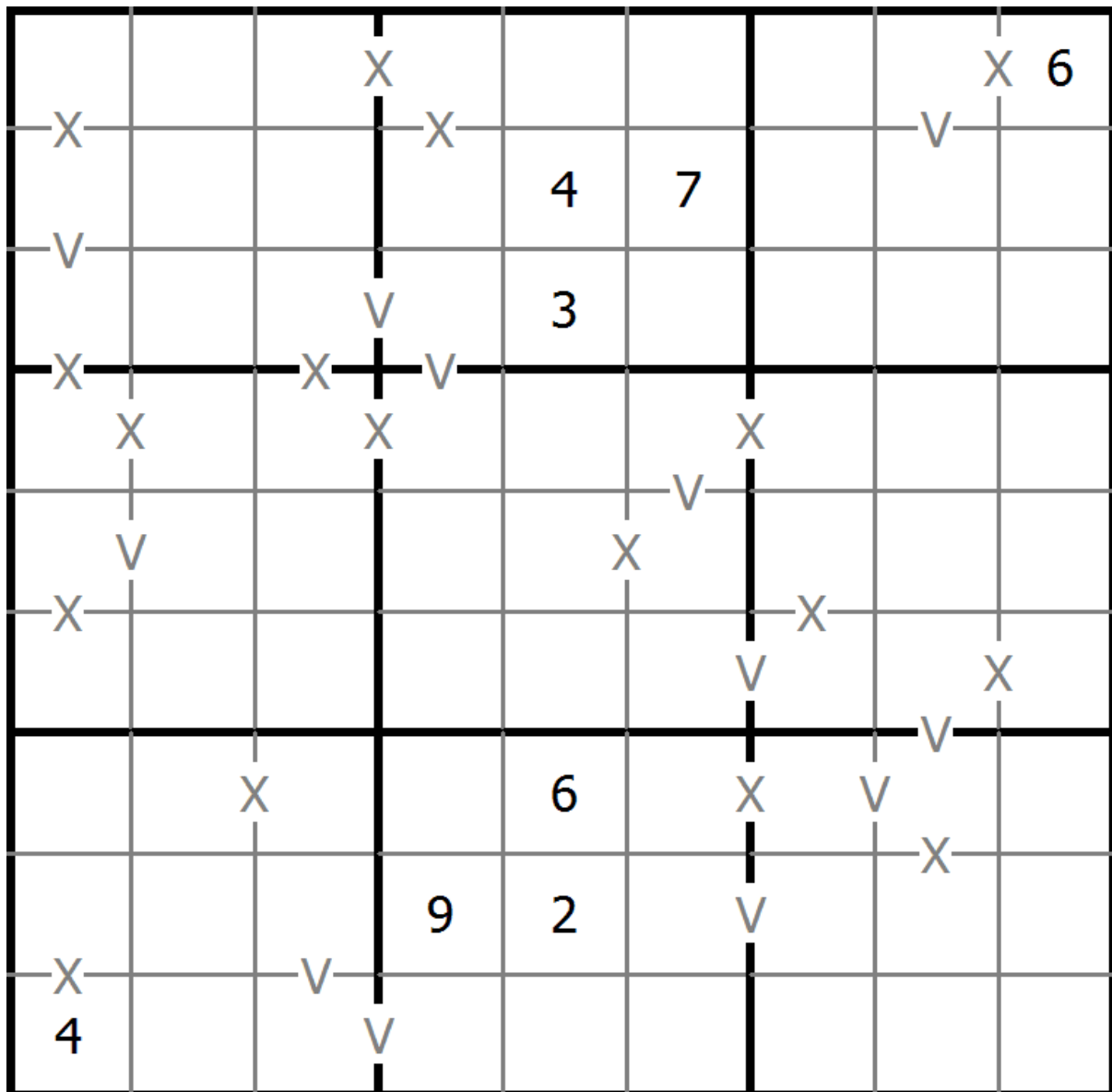
XV Sudoku

Place a digit from 1 to 9 into each of the empty squares so that each digit appears exactly once in each of the rows, columns and the nine outlined 3x3 regions.

Adjacent cells with digits summing to 5 are marked by V, while those summing to 10 are marked by X. All possible V and X are marked.



(Solution)



© sudoku.today

[Sudoku Today](https://sudoku.today) (<https://sudoku.today>)
[Samurai Sudoku](https://samuraisudoku.com) (<https://samuraisudoku.com>)

[Newdoku](https://newdoku.com) (<https://newdoku.com>)
[Sudoku Puzzle](https://www.sudoku-puzzle.org) (<https://www.sudoku-puzzle.org>)

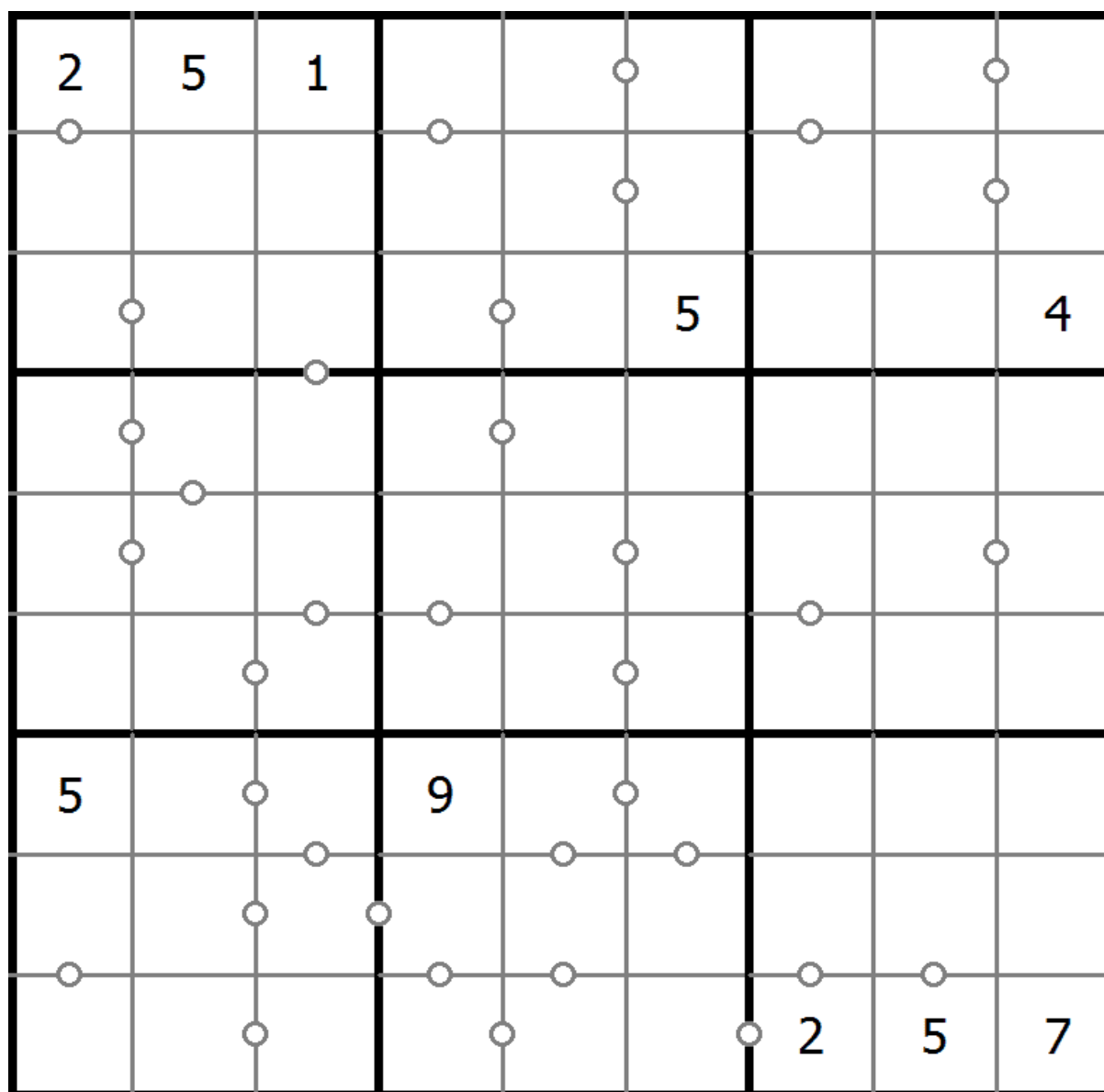
Consecutive Sudoku

Place a digit from 1 to 9 into each of the empty squares so that each digit appears exactly once in each of the rows, columns and the nine outlined 3x3 regions.

There are some dots between cells. The numbers on each side of a dot must always be consecutive. All possible dots are marked.



(Solution)



© sudoku.today

[Sudoku Today](https://sudoku.today) (<https://sudoku.today>)
[Samurai Sudoku](https://samuraisudoku.com) (<https://samuraisudoku.com>)

[Newdoku](https://newdoku.com) (<https://newdoku.com>)
[Sudoku Puzzle](https://www.sudoku-puzzle.org) (<https://www.sudoku-puzzle.org>)