

Hybrid Sudoku (Consecutive Pairs + Sum Frame)

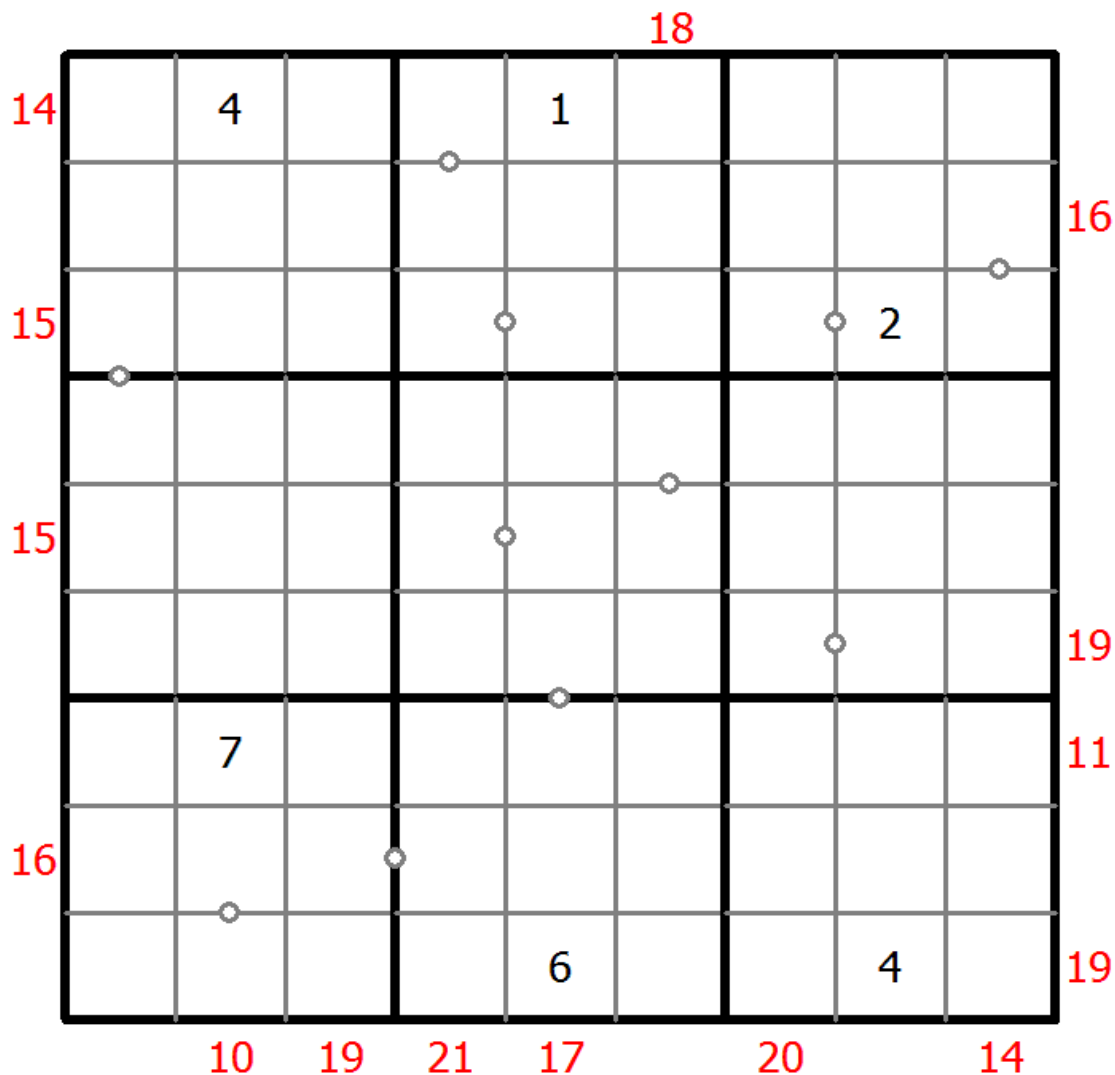
Place a digit from 1 to 9 into each of the empty squares so that each digit appears exactly once in each of the rows, columns and the nine outlined 3x3 regions.

There are some dots between cells. The numbers on each side of a dot must always be consecutive. Not all possible dots are marked.

Digits outside the grid indicate the sum of the first 3 digits in the corresponding direction.



(Solution)



© sudoku.today

[Sudoku Today](https://sudoku.today) (<https://sudoku.today>)

[Samurai Sudoku](https://samuraisudoku.com) (<https://samuraisudoku.com>)

[Newdoku](https://newdoku.com) (<https://newdoku.com>)

[Sudoku Puzzle](https://www.sudokupuzzle.org) (<https://www.sudokupuzzle.org>)

Odd Even Sudoku

Place a digit from 1 to 9 into each of the empty squares so that each digit appears exactly once in each of the rows, columns and the nine outlined 3x3 regions.

Cells with shaded squares contain even digits. Cells with shaded circles contain odd digits.



(Solution)

		6		▲		1		
	3		▲	■	■	9		
5		■	▲		■	▲	3	6
	▲	■		6		▲	▲	
■	▲			3	1		■	▲
6	▲	▲	9			■	■	
1	5	■	■	4	▲	▲		
	2		▲	▲	■			
		7		▲	3			9

© sudoku.today

[Sudoku Today](https://sudoku.today) (<https://sudoku.today>)

[Samurai Sudoku](https://samuraisudoku.com) (<https://samuraisudoku.com>)

[Newdoku](https://newdoku.com) (<https://newdoku.com>)

[Sudoku Puzzle](https://www.sudokupuzzle.org) (<https://www.sudokupuzzle.org>)

Quotients Sudoku

Place a digit from 1 to 9 into each of the empty squares so that each digit appears exactly once in each of the rows, columns and the nine outlined 3x3 regions.

A number between two cells indicates the quotient of the numbers in these cells. A number between four cells indicates the quotient between two diagonally adjacent cells, either top left + right bottom (\) or top right + bottom left (/).



(Solution)

					3			
			4/9				/1/3	
4								
			\2/3					
			2				7/9	
						/7/9	/1/9	
					2/3			
							\1/6	
	9				1/3			
			/1/8			/5/9		
			\7/8					
			3/7					
	1/3	1/5			/2/9		2/5	
			\5/8-2/4					3/8

© sudoku.today

[Sudoku Today](https://sudoku.today) (<https://sudoku.today>)

[Samurai Sudoku](https://samuraisudoku.com) (<https://samuraisudoku.com>)

[Newdoku](https://newdoku.com) (<https://newdoku.com>)

[Sudoku Puzzle](https://www.sudokupuzzle.org) (<https://www.sudokupuzzle.org>)

Clone Sudoku

Place a digit from 1 to 9 into each of the empty squares so that each digit appears exactly once in each of the rows, columns and the nine outlined 3x3 regions.

Grey cells in the grid represent many cloned areas. Digits in these areas on corresponding positions must be identical. Cloned areas are only moved, without rotation or reflection.



(Solution)

							5	
		4			1			9
	3				4			
		8			7			
			6			7		
			4				9	
9			8			3		
	6							

© sudoku.today

[Sudoku Today](https://sudoku.today) (<https://sudoku.today>)

[Samurai Sudoku](https://samuraisudoku.com) (<https://samuraisudoku.com>)

[Newdoku](https://newdoku.com) (<https://newdoku.com>)

[Sudoku Puzzle](https://www.sudokupuzzle.org) (<https://www.sudokupuzzle.org>)

Makodoku

Place a digit from 1 to 9 into each of the empty squares so that each digit appears exactly once in each of the rows, columns and the nine outlined 3x3 regions.

A cross between two cells indicates that the product of the numbers in these cells is less than 10. A plus between two cells indicates that the sum of the numbers in these cells is less than 10. If the sum and product are less than 10, then there is a cross between these cells. If there is no sign between two cells, then both sum and product are at least 10.



(Solution)

				×	+		4	+		
×					×		+			
	+						×			
+			+		×		×			
+			+		+		+	×		
			+	+	×		×			
9		×	+			×		×		+
	×	+			+			×		+
	×	+		+				+		+
	+		+	+		+		+		
	+	+	+	×	+					×
				+	+			+		×
+		+					+		×	×
		+	1	×			+		+	

© sudoku.today

[Sudoku Today](https://sudoku.today) (<https://sudoku.today>)

[Samurai Sudoku](https://samuraisudoku.com) (<https://samuraisudoku.com>)

[Newdoku](https://newdoku.com) (<https://newdoku.com>)

[Sudoku Puzzle](https://www.sudokupuzzle.org) (<https://www.sudokupuzzle.org>)

Mathrax Sudoku

Place a digit from 1 to 9 into each of the empty squares so that each digit appears exactly once in each of the rows, columns and the nine outlined 3x3 regions.

Some intersections of the grid lines are marked by a number and an operator (+, -, x, /) in a circle. The number is the result of the operation, applied to both pairs of diagonally opposite cells. An E in the circle indicates that all four adjacent digits are even, while an O indicates that all four adjacent digits are odd.



(Solution)

5						1		3
			9+					7
		2-				E		
						3		
					2/			
			9					
			24x			O		
6								
					9			
	9	3	1		6	4		

© sudoku.today

[Sudoku Today](https://sudoku.today) (https://sudoku.today)
[Samurai Sudoku](https://samuraisudoku.com) (https://samuraisudoku.com)

[Newdoku](https://newdoku.com) (https://newdoku.com)
[Sudoku Puzzle](https://www.sudokupuzzle.org) (https://www.sudokupuzzle.org)

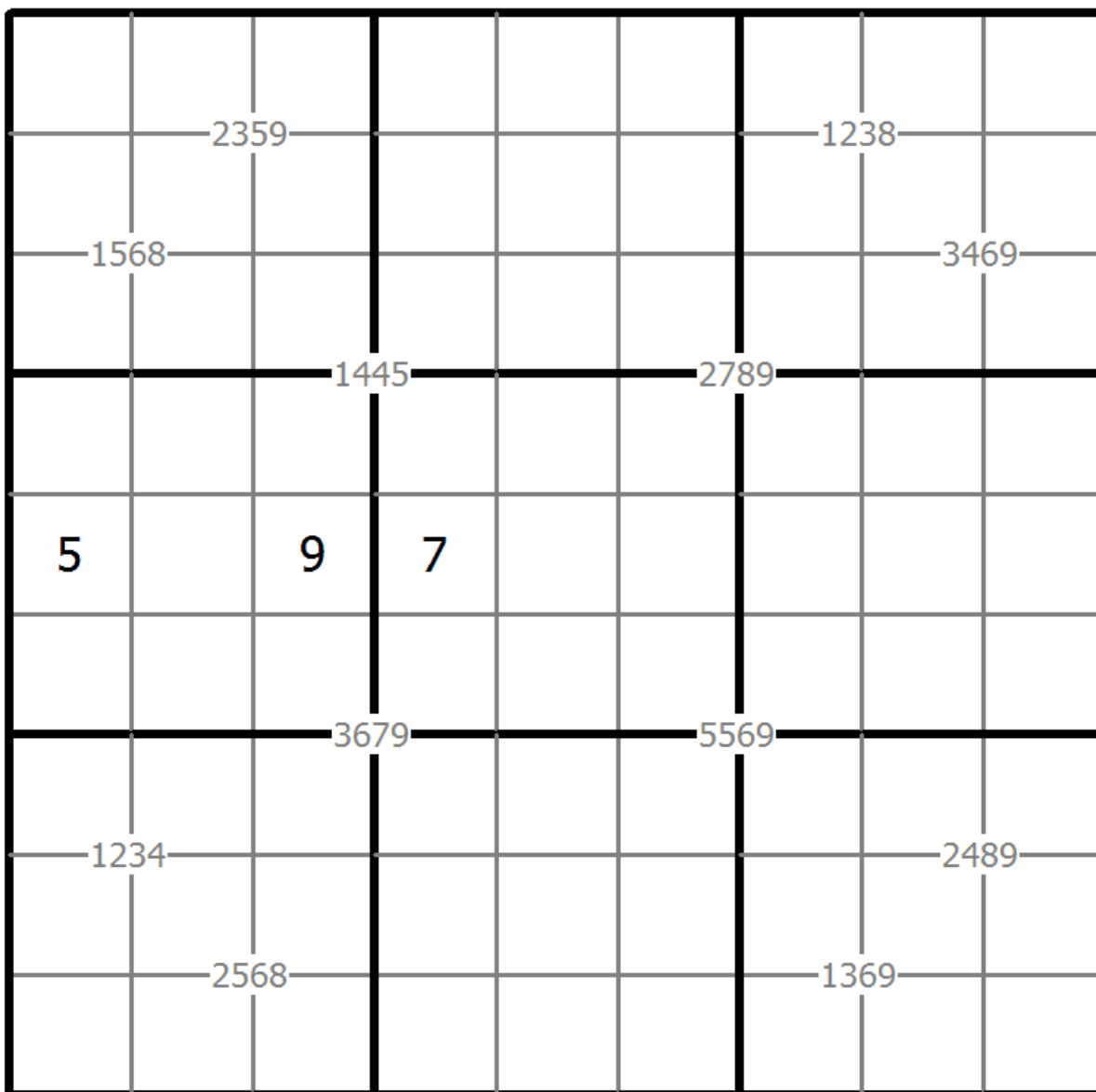
Quadruple sudoku

Place a digit from 1 to 9 into each of the empty squares so that each digit appears exactly once in each of the rows, columns and the nine outlined 3x3 regions.

Each set of four digits in the intersection of two lines indicates the digits that have to be placed in the four adjacent cells.



(Solution)



© sudoku.today

[Sudoku Today](https://sudoku.today) (<https://sudoku.today>)

[Samurai Sudoku](https://samuraisudoku.com) (<https://samuraisudoku.com>)

[Newdoku](https://newdoku.com) (<https://newdoku.com>)

[Sudoku Puzzle](https://www.sudokupuzzle.org) (<https://www.sudokupuzzle.org>)

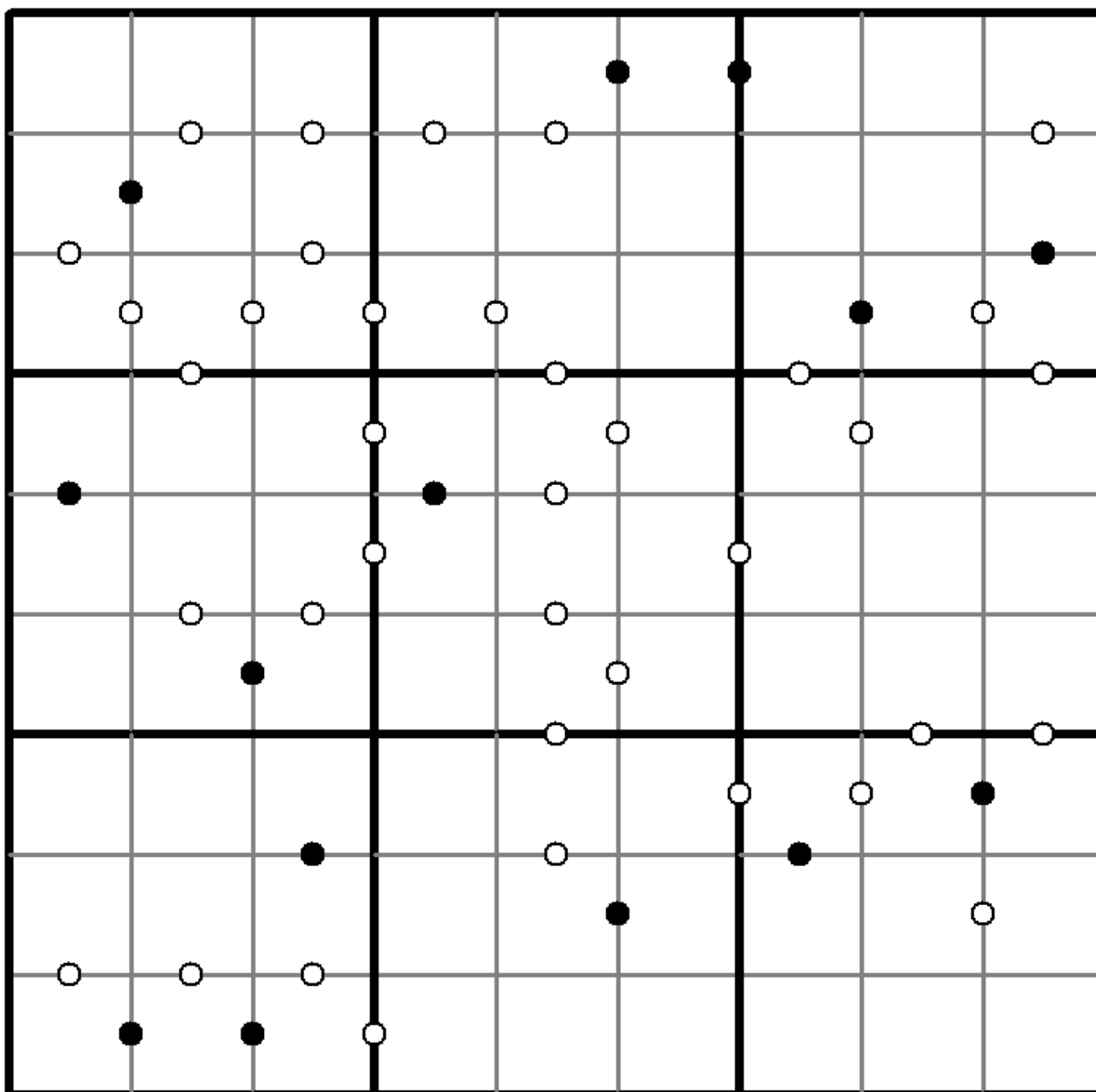
Kropki Sudoku

Place a digit from 1 to 9 into each of the empty squares so that each digit appears exactly once in each of the rows, columns and the nine outlined 3x3 regions.

If absolute difference between two digits in neighbouring cells equals 1, then they are separated by a white dot. If the digit is a half of digit in the neighbouring cell, then they are separated by black dot. The dot between 1 and 2 can be either white or black.



(Solution)



© sudoku.today

[Sudoku Today](https://sudoku.today) (<https://sudoku.today>)

[Samurai Sudoku](https://samuraisudoku.com) (<https://samuraisudoku.com>)

[Newdoku](https://newdoku.com) (<https://newdoku.com>)

[Sudoku Puzzle](https://www.sudokupuzzle.org) (<https://www.sudokupuzzle.org>)

Products Sudoku

Place a digit from 1 to 9 into each of the empty squares so that each digit appears exactly once in each of the rows, columns and the nine outlined 3x3 regions.

A number between two cells indicates the product of the numbers in these cells. A number between four cells indicates the product between two diagonally adjacent cells, either top left + right bottom (\) or top right + bottom left (/).



(Solution)

			1		4			5
							4	
				8			18	
20				/27	9		24	
	40	56						
			\28	\18				
9								
			20		48	/42		
					48		9	
		4		2		5		
		5						
3								
	2							

© sudoku.today

[Sudoku Today](https://sudoku.today) (<https://sudoku.today>)

[Samurai Sudoku](https://samuraisudoku.com) (<https://samuraisudoku.com>)

[Newdoku](https://newdoku.com) (<https://newdoku.com>)

[Sudoku Puzzle](https://www.sudokupuzzle.org) (<https://www.sudokupuzzle.org>)

Staircase Sudoku

Place a digit from 1 to 9 into each of the empty squares so that each digit appears exactly once in each of the rows, columns and the nine outlined 3x3 regions.

Rows and columns span across the gaps in the diagram.



(Solution)

	7	4						
9						1		5
1	6		7		3			8
	1	5	2		8			
		8	6					
7	2							
							2	9
						4	8	
					8	6	1	3
			3			6	7	
			8		6			5
							6	4

© sudoku.today

[Sudoku Today](https://sudoku.today) (<https://sudoku.today>)

[Samurai Sudoku](https://samuraisudoku.com) (<https://samuraisudoku.com>)

[Newdoku](https://newdoku.com) (<https://newdoku.com>)

[Sudoku Puzzle](https://www.sudokupuzzle.org) (<https://www.sudokupuzzle.org>)

Edge Difference Sudoku

Place a digit from 1 to 9 into each of the empty squares so that each digit appears exactly once in each of the rows, columns and the nine outlined 3x3 regions.

A number at the edge of the diagram indicates the difference between the first and the last number in the corresponding row or column.



(Solution)

	1	1	3	8	5	3	5	4	2
2									
8		2							
5						4			
3						7		9	
7				3		6			
1									
1			8						
4			6	8					
1									

© sudoku.today

[Sudoku Today](https://sudoku.today) (<https://sudoku.today>)

[Samurai Sudoku](https://samuraisudoku.com) (<https://samuraisudoku.com>)

[Newdoku](https://newdoku.com) (<https://newdoku.com>)

[Sudoku Puzzle](https://www.sudokupuzzle.org) (<https://www.sudokupuzzle.org>)

Skyscrapers Sudoku

Place a digit from 1 to 9 into each of the empty squares so that each digit appears exactly once in each of the rows, columns and the nine outlined 3x3 regions.

Consider each number to be the height of a building. The numbers outside the grid indicate how many buildings can be seen when looking in that direction (taller buildings conceal smaller buildings behind them).



(Solution)

	3	3	4	1	6	3	4	3	2	
4					1			6		2
5										1
2		9								5
2					6	2				3
3										3
4	3			1	8					2
4								9		2
1										3
2		5			9					3
	2	4	3	3	1	2	3	3	4	

© sudoku.today

[Sudoku Today](https://sudoku.today) (<https://sudoku.today>)

[Samurai Sudoku](https://samuraisudoku.com) (<https://samuraisudoku.com>)

[Newdoku](https://newdoku.com) (<https://newdoku.com>)

[Sudoku Puzzle](https://www.sudokupuzzle.org) (<https://www.sudokupuzzle.org>)

Multi Diagonal Sudoku

Place a digit from 1 to 9 into each of the empty squares so that each digit appears exactly once in each of the rows, columns and the nine outlined 3x3 regions.

Digits do not repeat along the marked diagonals.



(Solution)

6						9		
				6			5	3
9		3			1			
4	2		5		6		3	8
			4			1		2
3	4			1				
		2						1

© sudoku.today

[Sudoku Today](https://sudoku.today) (<https://sudoku.today>)

[Samurai Sudoku](https://samuraisudoku.com) (<https://samuraisudoku.com>)

[Newdoku](https://newdoku.com) (<https://newdoku.com>)

[Sudoku Puzzle](https://www.sudokupuzzle.org) (<https://www.sudokupuzzle.org>)

Color Sudoku

Place a digit from 1 to 9 into each of the empty squares so that each digit appears exactly once in each of the rows, columns and the nine outlined 3x3 regions.

Apply Classic Sudoku rules. Within each coloured region each digit must appear exactly once.



(Solution)

			3			4		7
	4							
5					7		2	
	1			8	3	2		
	7		2		4		6	
		4	9	7			3	
	6		8					2
							9	
4		9			2			

© sudoku.today

[Sudoku Today](https://sudoku.today) (<https://sudoku.today>)

[Samurai Sudoku](https://samuraisudoku.com) (<https://samuraisudoku.com>)

[Newdoku](https://newdoku.com) (<https://newdoku.com>)

[Sudoku Puzzle](https://www.sudokupuzzle.org) (<https://www.sudokupuzzle.org>)

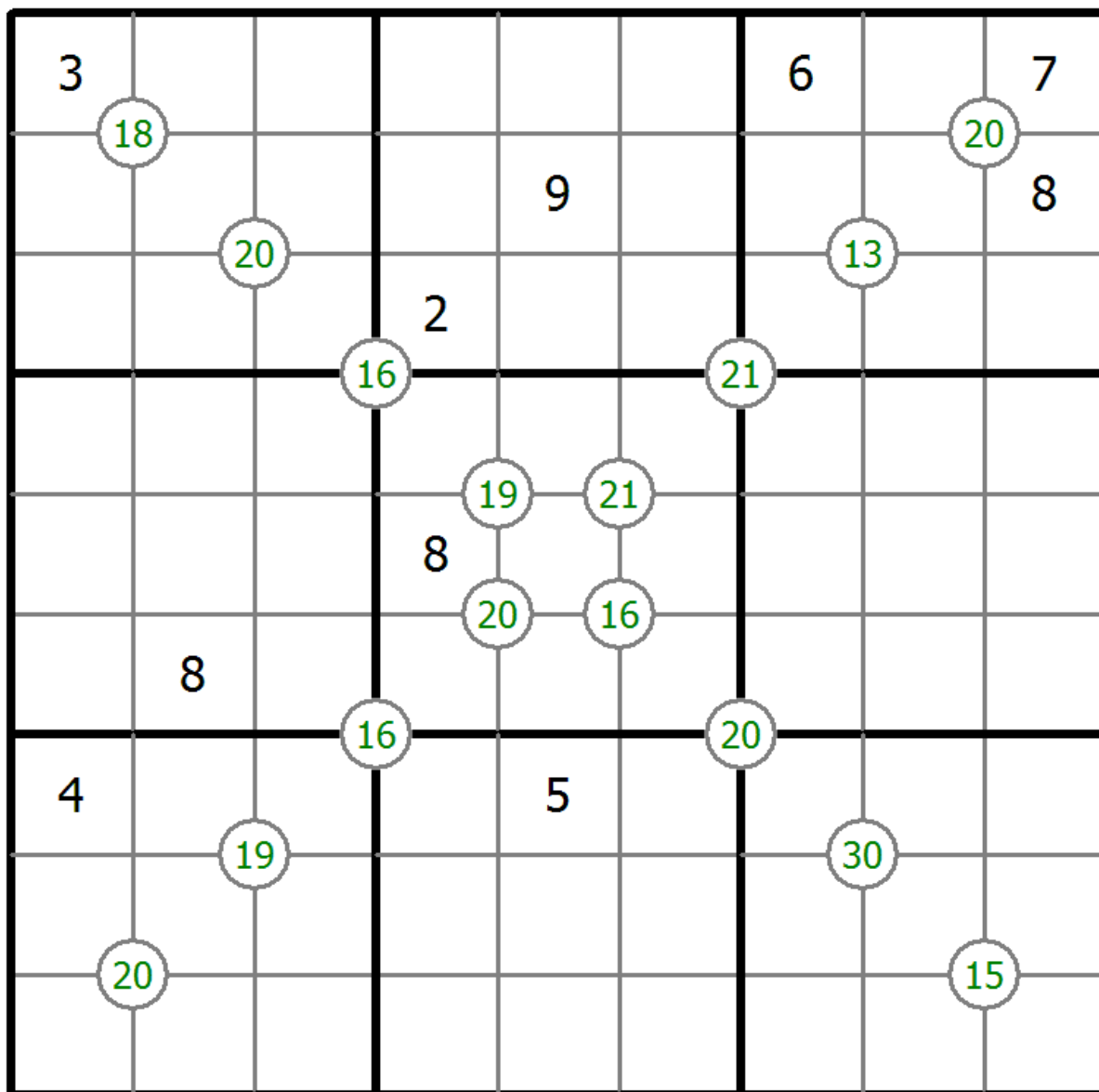
Group Sum Sudoku

Place a digit from 1 to 9 into each of the empty squares so that each digit appears exactly once in each of the rows, columns and the nine outlined 3x3 regions.

Each number at the intersection of four cells is the sum of digits in those four cells.



(Solution)



© sudoku.today

[Sudoku Today](https://sudoku.today) (<https://sudoku.today>)
[Samurai Sudoku](https://samuraisudoku.com) (<https://samuraisudoku.com>)

[Newdoku](https://newdoku.com) (<https://newdoku.com>)
[Sudoku Puzzle](https://www.sudokupuzzle.org) (<https://www.sudokupuzzle.org>)

Extra Regions Sudoku

Place a digit from 1 to 9 into each of the empty squares so that each digit appears exactly once in each of the rows, columns and the nine outlined 3x3 regions.

The connected shaded cells contain each digit from 1 to 9.



(Solution)

5		6						9
	3				1			
				2			4	3
2	9		6			1	7	
8								5
	5	1			8		9	2
7	4			3				
			8				3	
3						9		7

© sudoku.today

[Sudoku Today](https://sudoku.today) (<https://sudoku.today>)

[Samurai Sudoku](https://samuraisudoku.com) (<https://samuraisudoku.com>)

[Newdoku](https://newdoku.com) (<https://newdoku.com>)

[Sudoku Puzzle](https://www.sudokupuzzle.org) (<https://www.sudokupuzzle.org>)

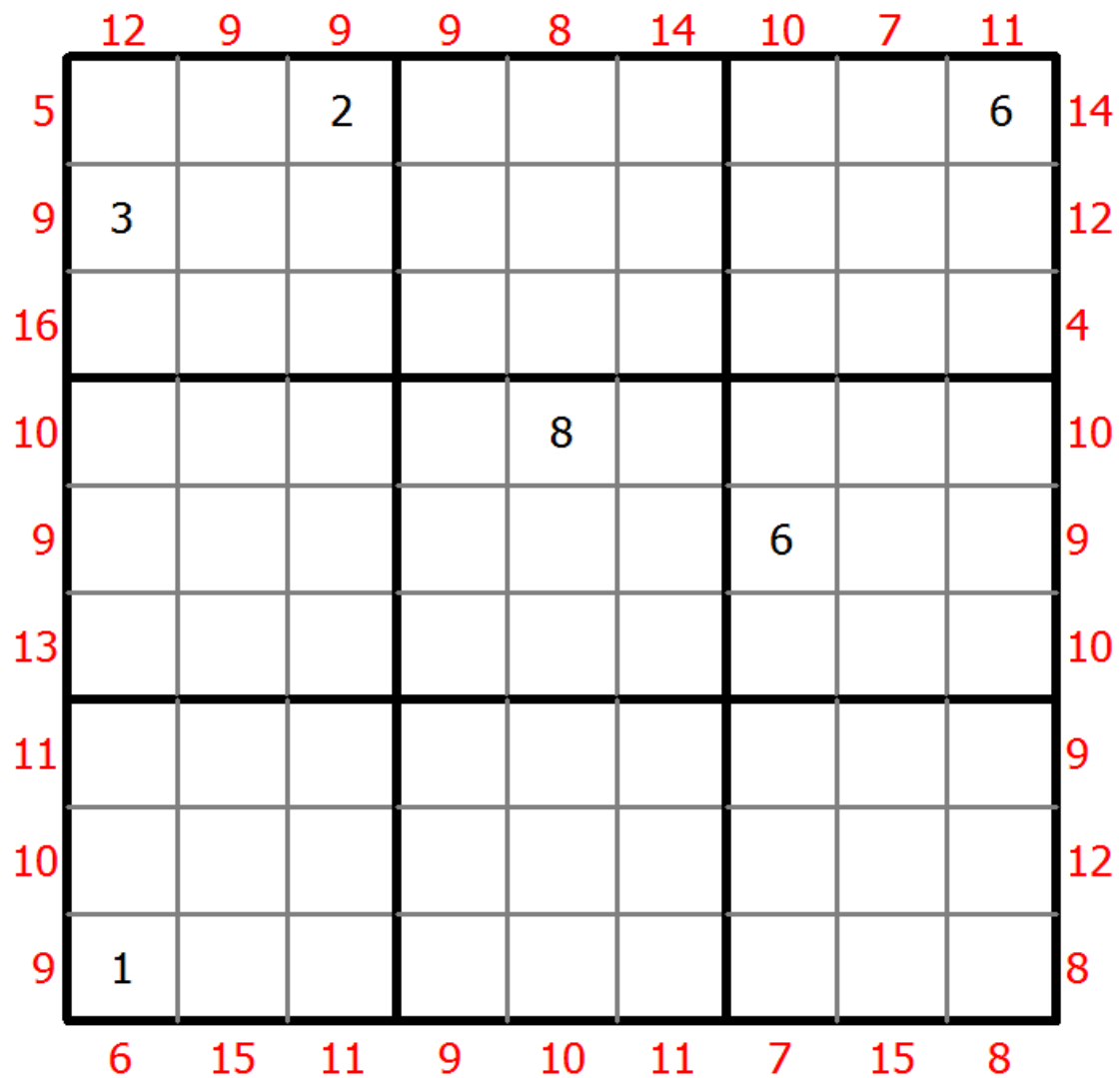
MiniMax Sudoku

Place a digit from 1 to 9 into each of the empty squares so that each digit appears exactly once in each of the rows, columns and the nine outlined 3x3 regions.

A number at the edge of the diagram indicates the sum of the highest and the lowest number in the first three cells in the corresponding row or column.



(Solution)



© sudoku.today

[Sudoku Today](https://sudoku.today) (<https://sudoku.today>)

[Samurai Sudoku](https://samuraisudoku.com) (<https://samuraisudoku.com>)

[Newdoku](https://newdoku.com) (<https://newdoku.com>)

[Sudoku Puzzle](https://www.sudokupuzzle.org) (<https://www.sudokupuzzle.org>)

Sum Frame Sudoku

Place a digit from 1 to 9 into each of the empty squares so that each digit appears exactly once in each of the rows, columns and the nine outlined 3x3 regions.

Digits outside the grid indicate the sum of the first 3 digits in the corresponding direction.



(Solution)

19						3		
14						5		14
12								
10	7			4				
	3	8		6		1	5	
20				3			7	
19								
		1						22
18		7						

Sum values for rows: 14, 18, 13, 17

Sum values for columns: 13, 23, 19, 18, 8

© sudoku.today

[Sudoku Today](https://sudoku.today) (<https://sudoku.today>)

[Samurai Sudoku](https://samuraisudoku.com) (<https://samuraisudoku.com>)

[Newdoku](https://newdoku.com) (<https://newdoku.com>)

[Sudoku Puzzle](https://www.sudokupuzzle.org) (<https://www.sudokupuzzle.org>)

Extra Regions Sudoku

Place a digit from 1 to 9 into each of the empty squares so that each digit appears exactly once in each of the rows, columns and the nine outlined 3x3 regions.

The connected shaded cells contain each digit from 1 to 9.



(Solution)

			7			8		2
	1	4	2				9	
								1
			9	5				
9								4
				3	1			
3								
	5				6	4	8	
6		8			9			

© sudoku.today

[Sudoku Today](https://sudoku.today) (<https://sudoku.today>)

[Samurai Sudoku](https://samuraisudoku.com) (<https://samuraisudoku.com>)

[Newdoku](https://newdoku.com) (<https://newdoku.com>)

[Sudoku Puzzle](https://www.sudokupuzzle.org) (<https://www.sudokupuzzle.org>)

Give me Five Sudoku

Place a digit from 1 to 9 into each of the empty squares so that each digit appears exactly once in each of the rows, columns and the nine outlined 3x3 regions.

Sum and difference of two orthogonally adjacent numbers must not be 5.



(Solution)

								7
	8		6		1		4	
7	4	6		9		8		
4					5			
	9							5
6								
		8						
					9			6
					6			

© sudoku.today

[Sudoku Today](https://sudoku.today) (<https://sudoku.today>)

[Samurai Sudoku](https://samuraisudoku.com) (<https://samuraisudoku.com>)

[Newdoku](https://newdoku.com) (<https://newdoku.com>)

[Sudoku Puzzle](https://www.sudokupuzzle.org) (<https://www.sudokupuzzle.org>)