

## Extra Regions Sudoku

Place a digit from 1 to 9 into each of the empty squares so that each digit appears exactly once in each of the rows, columns and the nine outlined 3x3 regions.

The connected shaded cells contain each digit from 1 to 9.



(Solution)

				4			5	
		9	5			6	8	
			8			4		
5					7	9		4
1								2
9		3	4					8
		4			9			
	8	5			3	1		
	9			5				

© sudoku.today

[Sudoku Today](https://sudoku.today) ( <https://sudoku.today> )

[Samurai Sudoku](https://samuraisudoku.com) ( <https://samuraisudoku.com> )

[Newdoku](https://newdoku.com) ( <https://newdoku.com> )

[Sudoku Puzzle](https://www.sudokupuzzle.org) ( <https://www.sudokupuzzle.org> )

## Mirror Sudoku

Place a digit from 1 to 9 into each of the empty squares so that each digit appears exactly once in each of the rows, columns and the nine outlined 3x3 regions.

The four corner boxes contain the same digit in symmetric positions about the centre.



(Solution)

	1				7		8	
2		7			1			
					9	1		
						5	6	4
7	6	8						
		1	4					
			1			7		2
	8		6				1	

© sudoku.today

[Sudoku Today](https://sudoku.today) ( <https://sudoku.today> )

[Samurai Sudoku](https://samuraisudoku.com) ( <https://samuraisudoku.com> )

[Newdoku](https://newdoku.com) ( <https://newdoku.com> )

[Sudoku Puzzle](https://www.sudokupuzzle.org) ( <https://www.sudokupuzzle.org> )

# Rossini Sudoku

Place a digit from 1 to 9 into each of the empty squares so that each digit appears exactly once in each of the rows, columns and the nine outlined 3x3 regions.

The arrows outside the grid indicate that the nearest three digits in the corresponding direction are in ascending or descending order (the highest number is always in the direction of the arrow). All possible arrows are given, so if there is no arrow, the first three digits do not form an increasing sequence in either direction.



(Solution)

									↑	↑	↓	↑
			4		3				→	→		
		4		2		1						
	7						9					
←			2				7		←	←		
	5						2					
		9		6		5					←	
			8		9							
									↑	↓	↑	↓

© sudoku.today

[Sudoku Today](https://sudoku.today) ( <https://sudoku.today> )  
[Samurai Sudoku](https://samuraisudoku.com) ( <https://samuraisudoku.com> )

[Newdoku](https://newdoku.com) ( <https://newdoku.com> )  
[Sudoku Puzzle](https://www.sudokupuzzle.org) ( <https://www.sudokupuzzle.org> )

## Sum Frame Sudoku

Place a digit from 1 to 9 into each of the empty squares so that each digit appears exactly once in each of the rows, columns and the nine outlined 3x3 regions.

Digits outside the grid indicate the sum of the first 3 digits in the corresponding direction.



(Solution)

	16	17	12	16	18	11	15	12	18	
19										7
11										23
15										15
15										17
14										12
16										16
10										15
13										16
22										14
	22	11	12	17	8	20	13	19	13	

© sudoku.today

[Sudoku Today](https://sudoku.today) ( <https://sudoku.today> )

[Samurai Sudoku](https://samuraisudoku.com) ( <https://samuraisudoku.com> )

[Newdoku](https://newdoku.com) ( <https://newdoku.com> )

[Sudoku Puzzle](https://www.sudokupuzzle.org) ( <https://www.sudokupuzzle.org> )

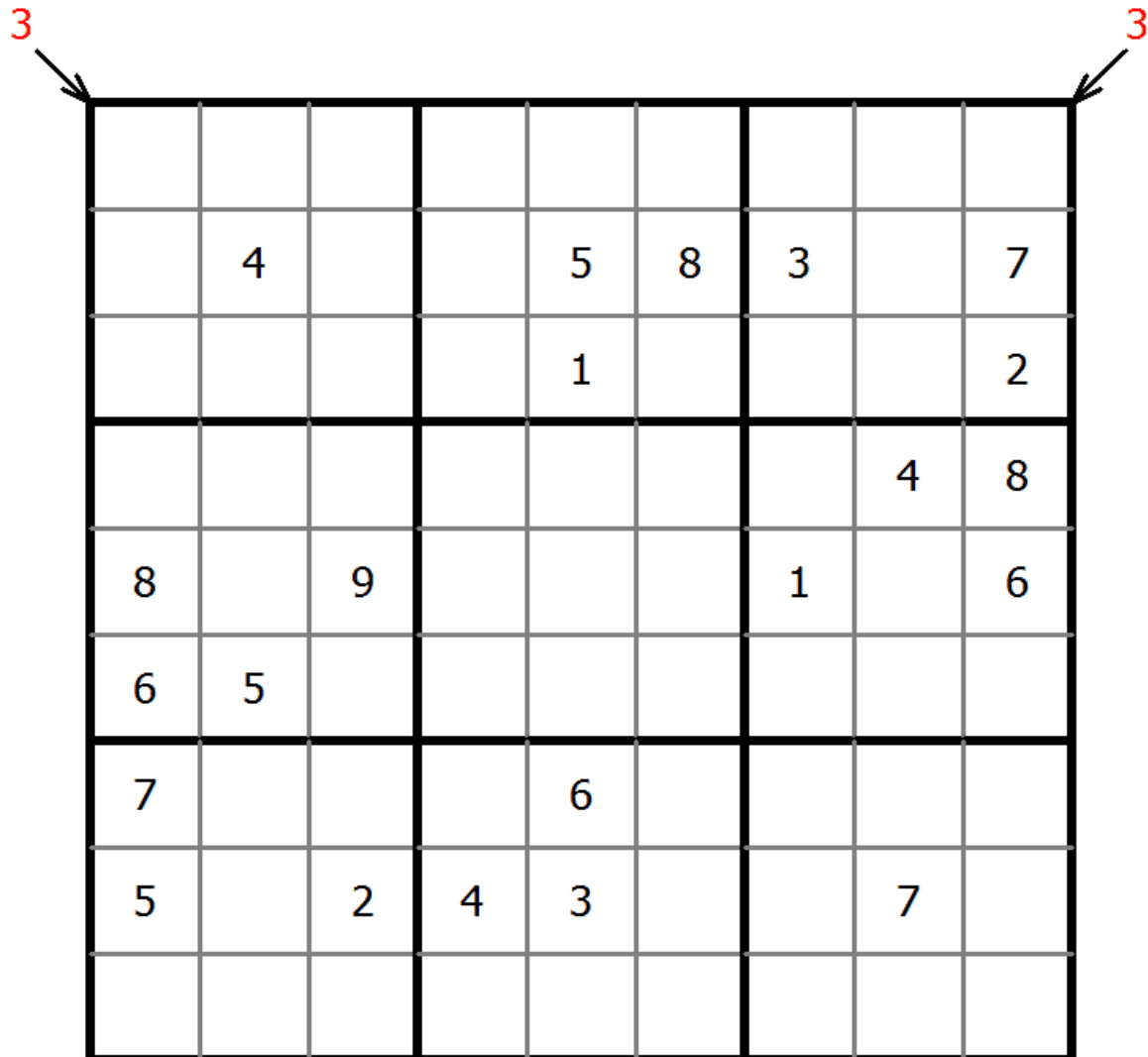
## Count different Sudoku

Place a digit from 1 to 9 into each of the empty squares so that each digit appears exactly once in each of the rows, columns and the nine outlined 3x3 regions.

Arrows and numbers outside gridding means how many different numbers in corresponding direction grid.



(Solution)



© sudoku.today

[Sudoku Today](https://sudoku.today) ( <https://sudoku.today> )

[Samurai Sudoku](https://samuraisudoku.com) ( <https://samuraisudoku.com> )

[Newdoku](https://newdoku.com) ( <https://newdoku.com> )

[Sudoku Puzzle](https://www.sudokupuzzle.org) ( <https://www.sudokupuzzle.org> )

## Extra Regions Sudoku

Place a digit from 1 to 9 into each of the empty squares so that each digit appears exactly once in each of the rows, columns and the nine outlined 3x3 regions.

The connected shaded cells contain each digit from 1 to 9.



(Solution)

	7		6	1				
		4		8		2		
	8		3					
3		5	1			8		4
	4						2	
9		8			2	1		3
					5		4	
		2		6		7		
				7	1		9	

© sudoku.today

[Sudoku Today](https://sudoku.today) ( <https://sudoku.today> )

[Samurai Sudoku](https://samuraisudoku.com) ( <https://samuraisudoku.com> )

[Newdoku](https://newdoku.com) ( <https://newdoku.com> )

[Sudoku Puzzle](https://www.sudokupuzzle.org) ( <https://www.sudokupuzzle.org> )

## Quad Sums Sudoku

Place a digit from 1 to 9 into each of the empty squares so that each digit appears exactly once in each of the rows, columns and the nine outlined 3x3 regions.

One of the numbers in the four cells around a dot is the num of the other three numbers.



(Solution)

						4		
			4		9	6		
8								
7					5	9		
4		6						
					1		5	
		2						1
			5	7	3			
6		8						

© sudoku.today

[Sudoku Today](https://sudoku.today) ( <https://sudoku.today> )

[Samurai Sudoku](https://samuraisudoku.com) ( <https://samuraisudoku.com> )

[Newdoku](https://newdoku.com) ( <https://newdoku.com> )

[Sudoku Puzzle](https://www.sudokupuzzle.org) ( <https://www.sudokupuzzle.org> )

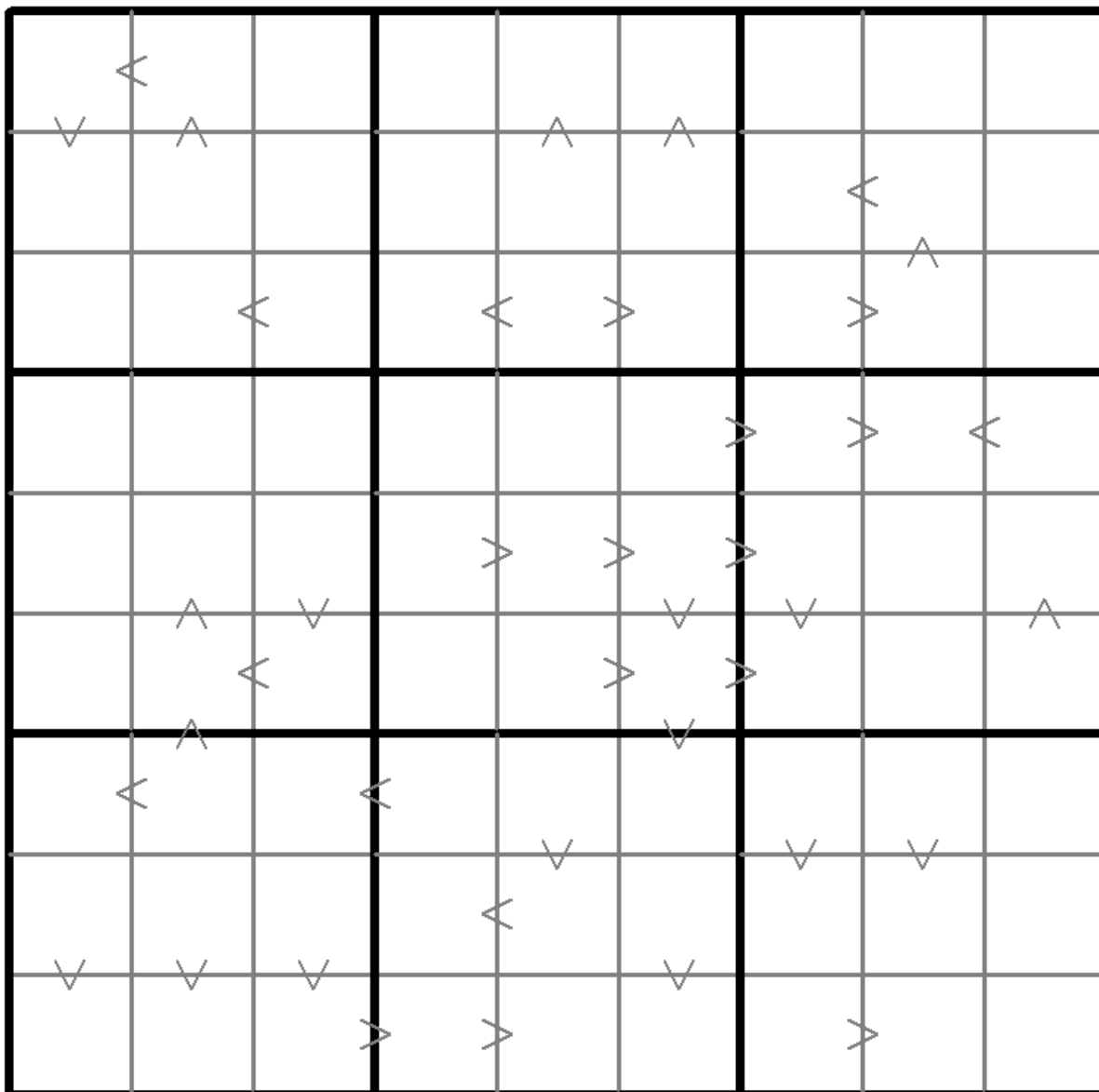
# Greater Than Kropki Sudoku

Place a digit from 1 to 9 into each of the empty squares so that each digit appears exactly once in each of the rows, columns and the nine outlined 3x3 regions.

In all cases where two digits have a consecutive value or one digit is two times as big as the other digit (or both), a greater than sign is placed. Digits have to be placed in accordance with the sign.



(Solution)



© sudoku.today

[Sudoku Today](https://sudoku.today) ( <https://sudoku.today> )  
[Samurai Sudoku](https://samuraisudoku.com) ( <https://samuraisudoku.com> )

[Newdoku](https://newdoku.com) ( <https://newdoku.com> )  
[Sudoku Puzzle](https://www.sudoku-puzzle.org) ( <https://www.sudoku-puzzle.org> )



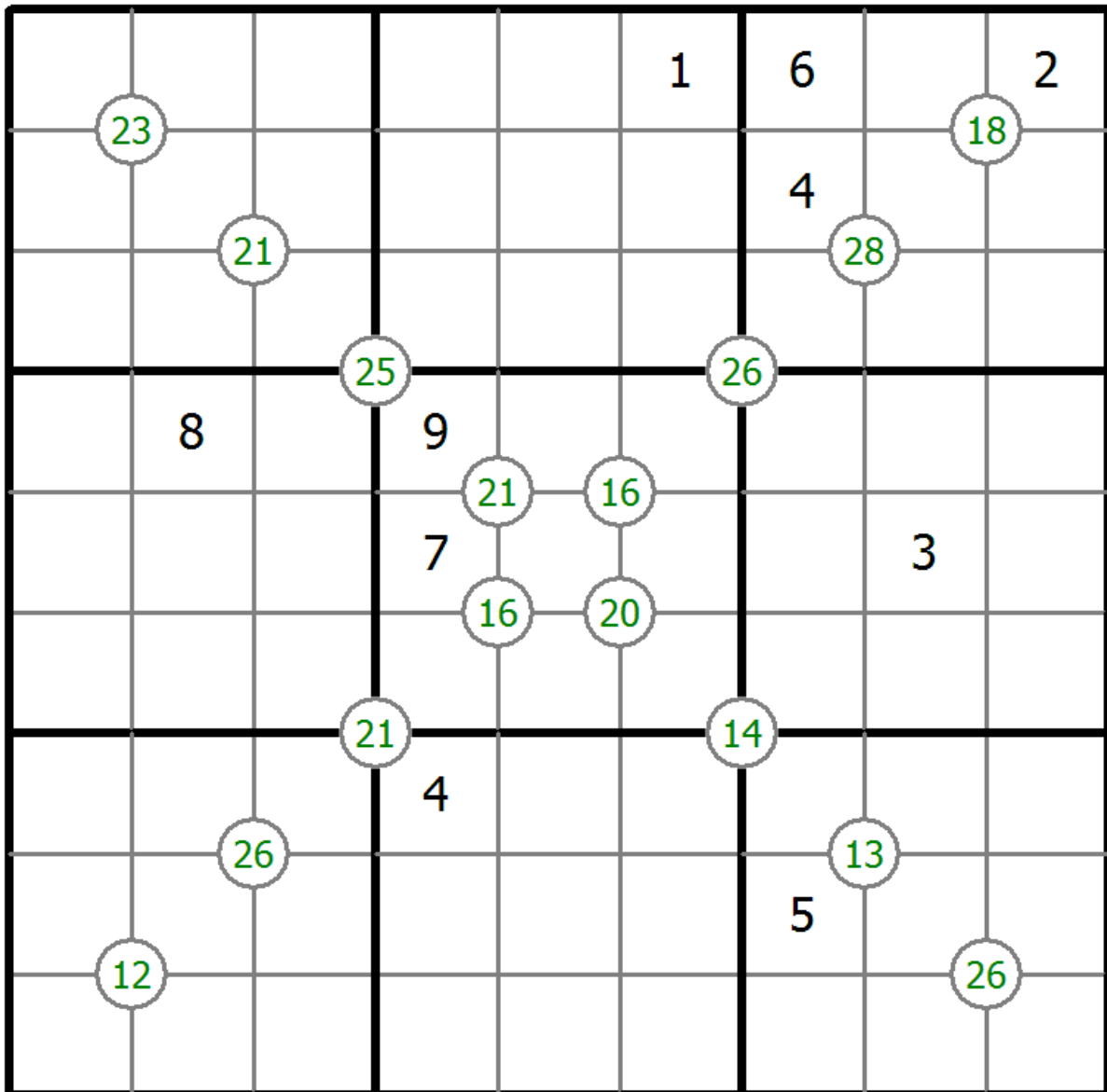
# Group Sum Sudoku

Place a digit from 1 to 9 into each of the empty squares so that each digit appears exactly once in each of the rows, columns and the nine outlined 3x3 regions.

Each number at the intersection of four cells is the sum of digits in those four cells.



(Solution)



© sudoku.today

[Sudoku Today](https://sudoku.today) ( <https://sudoku.today> )

[Samurai Sudoku](https://samuraisudoku.com) ( <https://samuraisudoku.com> )

[Newdoku](https://newdoku.com) ( <https://newdoku.com> )

[Sudoku Puzzle](https://www.sudokupuzzle.org) ( <https://www.sudokupuzzle.org> )

## Search 9 Sudoku

Place a digit from 1 to 9 into each of the empty squares so that each digit appears exactly once in each of the rows, columns and the nine outlined 3x3 regions.

The number in a cell with an arrow indicates the distance to the cell with the number 9 in the direction the arrow points to.



(Solution)

↓	↓	↓		↓		↓	↓	↓
	1							5
8						6		
→								
→				3				←
→				2		4		←
					2			←
			5					
→	→	→	8			↑	↑	↑

© sudoku.today

[Sudoku Today](https://sudoku.today) ( <https://sudoku.today> )

[Samurai Sudoku](https://samuraisudoku.com) ( <https://samuraisudoku.com> )

[Newdoku](https://newdoku.com) ( <https://newdoku.com> )

[Sudoku Puzzle](https://www.sudokupuzzle.org) ( <https://www.sudokupuzzle.org> )

# Consecutive Sudoku

Place a digit from 1 to 9 into each of the empty squares so that each digit appears exactly once in each of the rows, columns and the nine outlined 3x3 regions.

There are some dots between cells. The numbers on each side of a dot must always be consecutive. Not all possible dots are marked.



(Solution)

			1					
	8		○		○		7	
	5	4	9	7			2	○
		○	○	7		○		
4			5	○	9			8
			○		6			
	1		○	4	2	6	9	
	2				7		4	○
○		○			1			

© sudoku.today

[Sudoku Today](https://sudoku.today) ( <https://sudoku.today> )  
[Samurai Sudoku](https://samuraisudoku.com) ( <https://samuraisudoku.com> )

[Newdoku](https://newdoku.com) ( <https://newdoku.com> )  
[Sudoku Puzzle](https://www.sudokupuzzle.org) ( <https://www.sudokupuzzle.org> )

## Quotients Sudoku

Place a digit from 1 to 9 into each of the empty squares so that each digit appears exactly once in each of the rows, columns and the nine outlined 3x3 regions.

A number between two cells indicates the quotient of the numbers in these cells. A number between four cells indicates the quotient between two diagonally adjacent cells, either top left + right bottom (\) or top right + bottom left (/).



(Solution)

4	$1/4$				5		
						7	$7/9$
				$\backslash 1/3$			
			$2/3$				
		$1/8$		$\backslash 7/8$			
$5/6$			$2/7$		2		
		$1/9$		$2/3$	$1/2$	$2/3$	
			$1/4$		$1/3$		$\backslash 1/2$
						$6/7$	$1/3$
	$2/3$						
				$\backslash 5/6$			
			$3/7$				

© sudoku.today

[Sudoku Today](https://sudoku.today) ( <https://sudoku.today> )

[Samurai Sudoku](https://samuraisudoku.com) ( <https://samuraisudoku.com> )

[Newdoku](https://newdoku.com) ( <https://newdoku.com> )

[Sudoku Puzzle](https://www.sudokupuzzle.org) ( <https://www.sudokupuzzle.org> )

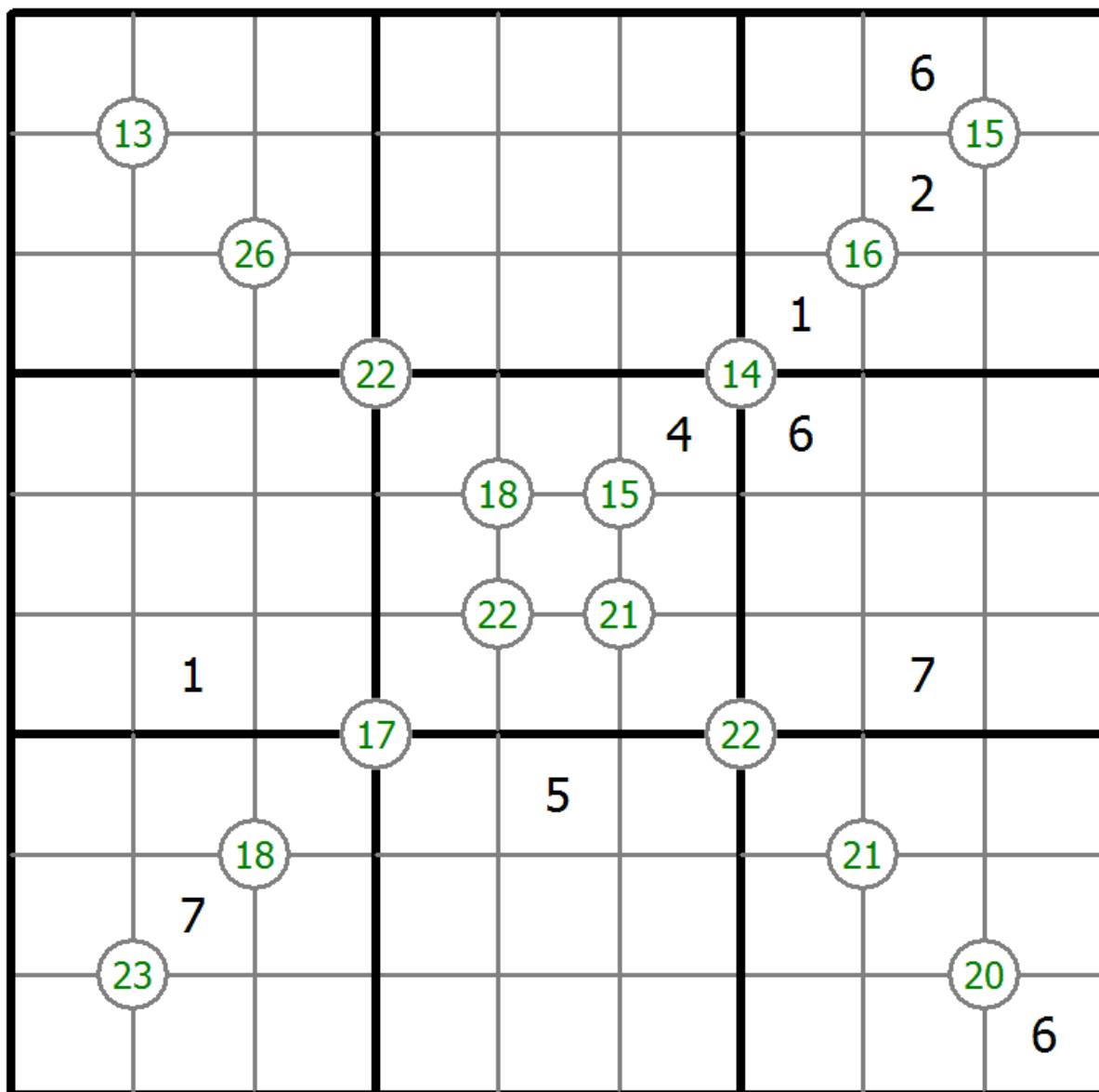
# Group Sum Sudoku

Place a digit from 1 to 9 into each of the empty squares so that each digit appears exactly once in each of the rows, columns and the nine outlined 3x3 regions.

Each number at the intersection of four cells is the sum of digits in those four cells.



(Solution)



© sudoku.today

[Sudoku Today](https://sudoku.today) ( <https://sudoku.today> )  
[Samurai Sudoku](https://samuraisudoku.com) ( <https://samuraisudoku.com> )

[Newdoku](https://newdoku.com) ( <https://newdoku.com> )  
[Sudoku Puzzle](https://www.sudokupuzzle.org) ( <https://www.sudokupuzzle.org> )

## Extra Regions Sudoku

Place a digit from 1 to 9 into each of the empty squares so that each digit appears exactly once in each of the rows, columns and the nine outlined 3x3 regions.

The connected shaded cells contain each digit from 1 to 9.



(Solution)

3			8					
			5		7	2		3
				3			8	9
						6	7	
	8	6				9	2	
	5	9						
8	7			9				
4		3	6		8			
					4			2

© sudoku.today

[Sudoku Today](https://sudoku.today) ( <https://sudoku.today> )

[Samurai Sudoku](https://samuraisudoku.com) ( <https://samuraisudoku.com> )

[Newdoku](https://newdoku.com) ( <https://newdoku.com> )

[Sudoku Puzzle](https://www.sudokupuzzle.org) ( <https://www.sudokupuzzle.org> )

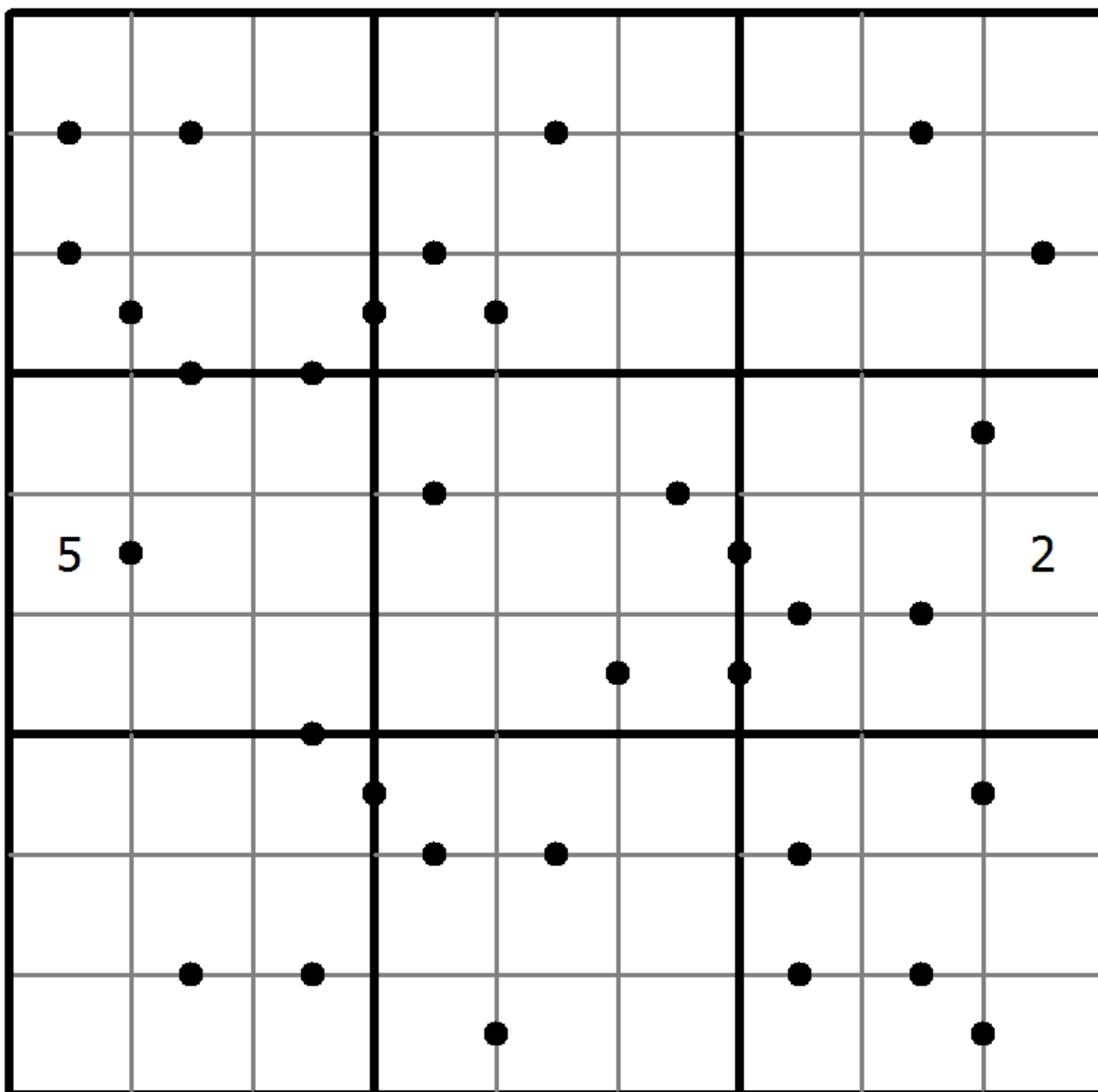
# Ten-Eleven Sudoku

Place a digit from 1 to 9 into each of the empty squares so that each digit appears exactly once in each of the rows, columns and the nine outlined 3x3 regions.

A dot between two cells indicates that the sum of the numbers in these cells is 10 or 11. If no dot between two cells the sum of the numbers in these cells must not be 10 or 11.



(Solution)



© sudoku.today

[Sudoku Today](https://sudoku.today) ( <https://sudoku.today> )  
[Samurai Sudoku](https://samuraisudoku.com) ( <https://samuraisudoku.com> )

[Newdoku](https://newdoku.com) ( <https://newdoku.com> )  
[Sudoku Puzzle](https://www.sudokupuzzle.org) ( <https://www.sudokupuzzle.org> )

## Edge Difference Sudoku

Place a digit from 1 to 9 into each of the empty squares so that each digit appears exactly once in each of the rows, columns and the nine outlined 3x3 regions.

A number at the edge of the diagram indicates the difference between the first and the last number in the corresponding row or column.



(Solution)

	1	3	7	4	1	8	4	2	2
3									
3							8		
7						3			
2		8							
6			2						
1	7							2	
2		1		4	5				
4									
2									

© sudoku.today

[Sudoku Today](https://sudoku.today) ( <https://sudoku.today> )  
[Samurai Sudoku](https://samuraisudoku.com) ( <https://samuraisudoku.com> )

[Newdoku](https://newdoku.com) ( <https://newdoku.com> )  
[Sudoku Puzzle](https://www.sudokupuzzle.org) ( <https://www.sudokupuzzle.org> )



## Cupid Sudoku

Place a digit from 1 to 9 into each of the empty squares so that each digit appears exactly once in each of the rows, columns and the nine outlined 3x3 regions.

An arrow in a cell indicates that the number in this cell is repeated at least once in the direction the arrow points to.



(Solution)

		1 ↘	6			↙		
	↘	↘			5	1 ↙	↙	9
↘	↘	↘				↙	↙	↙
								4
		5		6				1
7	1			4	2			5
↗	↗	↗				↖	↖	↖
	↗	↗				↖	2 ↘	
		6 ↗	7	3	4	↖		

© sudoku.today

[Sudoku Today](https://sudoku.today) ( <https://sudoku.today> )

[Samurai Sudoku](https://samuraisudoku.com) ( <https://samuraisudoku.com> )

[Newdoku](https://newdoku.com) ( <https://newdoku.com> )

[Sudoku Puzzle](https://www.sudokupuzzle.org) ( <https://www.sudokupuzzle.org> )

## Creasing Sudoku

Place a digit from 1 to 9 into each of the empty squares so that each digit appears exactly once in each of the rows, columns and the nine outlined 3x3 regions.

Digits along each line are monotonically increasing or decreasing.



(Solution)

			1	5		8	7	
	3							4
								1
7			2					
			4					8
						4		9
	5							

© sudoku.today

[Sudoku Today](https://sudoku.today) ( <https://sudoku.today> )

[Samurai Sudoku](https://samuraisudoku.com) ( <https://samuraisudoku.com> )

[Newdoku](https://newdoku.com) ( <https://newdoku.com> )

[Sudoku Puzzle](https://www.sudokupuzzle.org) ( <https://www.sudokupuzzle.org> )

# Arrow Sudoku

Place a digit from 1 to 9 into each of the empty squares so that each digit appears exactly once in each of the rows, columns and the nine outlined 3x3 regions.

The sum of the digits along the path of each arrow equals the digit in the circled cell. Digits may repeat within an arrow shape.



(Solution)

5								
8			2					
						8		
			3	7				
		9						

© sudoku.today

[Sudoku Today](https://sudoku.today) ( <https://sudoku.today> )  
[Samurai Sudoku](https://samuraisudoku.com) ( <https://samuraisudoku.com> )

[Newdoku](https://newdoku.com) ( <https://newdoku.com> )  
[Sudoku Puzzle](https://www.sudokupuzzle.org) ( <https://www.sudokupuzzle.org> )

# Perfect Squares

Place a digit from 1 to 9 into each of the empty squares so that each digit appears exactly once in each of the rows, columns and the nine outlined 3x3 regions.

A dot between two cells indicates that the digits in the two cells form a double digit square number in the reading direction. there are no square numbers marked by a dot.



(Solution)

						•		3
			1					
	3	2			4			
	8			•			9	•
•			2			7	3	
			•					•
					7			
7	•					•		
	•							

© sudoku.today

[Sudoku Today](https://sudoku.today) ( <https://sudoku.today> )  
[Samurai Sudoku](https://samuraisudoku.com) ( <https://samuraisudoku.com> )

[Newdoku](https://newdoku.com) ( <https://newdoku.com> )  
[Sudoku Puzzle](https://www.sudokupuzzle.org) ( <https://www.sudokupuzzle.org> )

## Classic Sudoku

Place a digit from 1 to 9 into each of the empty squares so that each digit appears exactly once in each of the rows, columns and the nine outlined 3x3 regions.



(Solution)

	6			5	2		7	
			8		3	2		
						9		3
					6	3		
1				7				4
		7	4					
8		4						
		2	5		7			
	9		3	8			5	

© sudoku.today

[Sudoku Today](https://sudoku.today) ( <https://sudoku.today> )

[Samurai Sudoku](https://samuraisudoku.com) ( <https://samuraisudoku.com> )

[Newdoku](https://newdoku.com) ( <https://newdoku.com> )

[Sudoku Puzzle](https://www.sudokupuzzle.org) ( <https://www.sudokupuzzle.org> )

## Classic Sudoku

Place a digit from 1 to 9 into each of the empty squares so that each digit appears exactly once in each of the rows, columns and the nine outlined 3x3 regions.



(Solution)

5		7	8				1	
	9				6			
				3			9	
8				9			2	
6								5
	5			1				9
	3			2				
			9				5	
	7				1	4		8

© sudoku.today

[Sudoku Today](https://sudoku.today) ( <https://sudoku.today> )

[Samurai Sudoku](https://samuraisudoku.com) ( <https://samuraisudoku.com> )

[Newdoku](https://newdoku.com) ( <https://newdoku.com> )

[Sudoku Puzzle](https://www.sudokupuzzle.org) ( <https://www.sudokupuzzle.org> )

## Classic Sudoku

Place a digit from 1 to 9 into each of the empty squares so that each digit appears exactly once in each of the rows, columns and the nine outlined 3x3 regions.



(Solution)

9		1		7				2
							5	6
					4		1	
	4	9	7					
5				2				7
					1	3	9	
	9		5					
2	7							
4				8		6		5

© sudoku.today

[Sudoku Today](https://sudoku.today) ( <https://sudoku.today> )

[Samurai Sudoku](https://samuraisudoku.com) ( <https://samuraisudoku.com> )

[Newdoku](https://newdoku.com) ( <https://newdoku.com> )

[Sudoku Puzzle](https://www.sudokupuzzle.org) ( <https://www.sudokupuzzle.org> )

## Classic Sudoku

Place a digit from 1 to 9 into each of the empty squares so that each digit appears exactly once in each of the rows, columns and the nine outlined 3x3 regions.



(Solution)

		1				8	5	
			7		6		9	
	8	2	9					
3			8			6		
		8			5			2
					2	9	4	
	3		1		9			
	2	5				7		

© sudoku.today

[Sudoku Today](https://sudoku.today) ( <https://sudoku.today> )

[Samurai Sudoku](https://samuraisudoku.com) ( <https://samuraisudoku.com> )

[Newdoku](https://newdoku.com) ( <https://newdoku.com> )

[Sudoku Puzzle](https://www.sudokupuzzle.org) ( <https://www.sudokupuzzle.org> )



## Classic Sudoku

Place a digit from 1 to 9 into each of the empty squares so that each digit appears exactly once in each of the rows, columns and the nine outlined 3x3 regions.



(Solution)

				3	5			
8						2	5	4
		4	9				6	
		8		6				9
				2				
9				4		3		
	6				4	8		
3	5	2						6
			3	1				

© sudoku.today

[Sudoku Today](https://sudoku.today) ( <https://sudoku.today> )

[Samurai Sudoku](https://samuraisudoku.com) ( <https://samuraisudoku.com> )

[Newdoku](https://newdoku.com) ( <https://newdoku.com> )

[Sudoku Puzzle](https://www.sudokupuzzle.org) ( <https://www.sudokupuzzle.org> )

## Classic Sudoku

Place a digit from 1 to 9 into each of the empty squares so that each digit appears exactly once in each of the rows, columns and the nine outlined 3x3 regions.



(Solution)

				3				
	7	1	2	9				
		9			8	3		7
							3	4
		3	9		2	1		
6	2							
8		5	7			4		
				4	3	5	9	
				6				

© sudoku.today

[Sudoku Today](https://sudoku.today) ( <https://sudoku.today> )

[Samurai Sudoku](https://samuraisudoku.com) ( <https://samuraisudoku.com> )

[Newdoku](https://newdoku.com) ( <https://newdoku.com> )

[Sudoku Puzzle](https://www.sudokupuzzle.org) ( <https://www.sudokupuzzle.org> )

## Classic Sudoku

Place a digit from 1 to 9 into each of the empty squares so that each digit appears exactly once in each of the rows, columns and the nine outlined 3x3 regions.



(Solution)

1				2			7	
			1				5	
		5			3	1	6	
		4			5			
	7			1			2	
			8			4		
	3	8	2			9		
	1				4			
	2			8				6

© sudoku.today

[Sudoku Today](https://sudoku.today) ( <https://sudoku.today> )

[Samurai Sudoku](https://samuraisudoku.com) ( <https://samuraisudoku.com> )

[Newdoku](https://newdoku.com) ( <https://newdoku.com> )

[Sudoku Puzzle](https://www.sudokupuzzle.org) ( <https://www.sudokupuzzle.org> )

## Classic Sudoku

Place a digit from 1 to 9 into each of the empty squares so that each digit appears exactly once in each of the rows, columns and the nine outlined 3x3 regions.



(Solution)

	9					6		
1		5				9		
			4	9		3		
6	2			5				7
			6		8			
9				7			2	6
		4		6	2			
		8				7		4
		9					3	

© sudoku.today

[Sudoku Today](https://sudoku.today) ( <https://sudoku.today> )

[Samurai Sudoku](https://samuraisudoku.com) ( <https://samuraisudoku.com> )

[Newdoku](https://newdoku.com) ( <https://newdoku.com> )

[Sudoku Puzzle](https://www.sudokupuzzle.org) ( <https://www.sudokupuzzle.org> )

## Classic Sudoku

Place a digit from 1 to 9 into each of the empty squares so that each digit appears exactly once in each of the rows, columns and the nine outlined 3x3 regions.



(Solution)

5		6		4		1		
		7			6	9		
						5		8
				5	7			
	7			1			3	
			3	8				
4		2						
		5	8			2		
		3		9		6		4

© sudoku.today

[Sudoku Today](https://sudoku.today) ( <https://sudoku.today> )

[Samurai Sudoku](https://samuraisudoku.com) ( <https://samuraisudoku.com> )

[Newdoku](https://newdoku.com) ( <https://newdoku.com> )

[Sudoku Puzzle](https://www.sudokupuzzle.org) ( <https://www.sudokupuzzle.org> )

## Classic Sudoku

Place a digit from 1 to 9 into each of the empty squares so that each digit appears exactly once in each of the rows, columns and the nine outlined 3x3 regions.



(Solution)

					2		7	
	8		5	3			9	
		2			6			8
		1			5		2	
				4				
	5		9			4		
7			6			5		
	6			7	1		4	
	4		2					

© sudoku.today

[Sudoku Today](https://sudoku.today) ( <https://sudoku.today> )

[Samurai Sudoku](https://samuraisudoku.com) ( <https://samuraisudoku.com> )

[Newdoku](https://newdoku.com) ( <https://newdoku.com> )

[Sudoku Puzzle](https://www.sudokupuzzle.org) ( <https://www.sudokupuzzle.org> )

## Classic Sudoku

Place a digit from 1 to 9 into each of the empty squares so that each digit appears exactly once in each of the rows, columns and the nine outlined 3x3 regions.



(Solution)

	2	6		3			7	
		9	1					
					6		5	8
				5		9		2
6		3		8				
1	7		9					
					8	2		
	8			2		4	9	

© sudoku.today

[Sudoku Today](https://sudoku.today) ( <https://sudoku.today> )

[Samurai Sudoku](https://samuraisudoku.com) ( <https://samuraisudoku.com> )

[Newdoku](https://newdoku.com) ( <https://newdoku.com> )

[Sudoku Puzzle](https://www.sudokupuzzle.org) ( <https://www.sudokupuzzle.org> )

## Classic Sudoku

Place a digit from 1 to 9 into each of the empty squares so that each digit appears exactly once in each of the rows, columns and the nine outlined 3x3 regions.



(Solution)

	1							4
		5			6			
6	7			3				
9				8		2		
		4	3	9	1	7		
		6		5				1
				4			1	2
			9			8		
3							7	

© sudoku.today

[Sudoku Today](https://sudoku.today) ( <https://sudoku.today> )

[Samurai Sudoku](https://samuraisudoku.com) ( <https://samuraisudoku.com> )

[Newdoku](https://newdoku.com) ( <https://newdoku.com> )

[Sudoku Puzzle](https://www.sudokupuzzle.org) ( <https://www.sudokupuzzle.org> )



## Classic Sudoku

Place a digit from 1 to 9 into each of the empty squares so that each digit appears exactly once in each of the rows, columns and the nine outlined 3x3 regions.



(Solution)

						7	5	6
				3	7	4		
4		9		8				
			7			2	9	
				4				
	2	5			8			
				7		6		3
		6	2	9				
5	8	7						

© sudoku.today

[Sudoku Today](https://sudoku.today) ( <https://sudoku.today> )

[Samurai Sudoku](https://samuraisudoku.com) ( <https://samuraisudoku.com> )

[Newdoku](https://newdoku.com) ( <https://newdoku.com> )

[Sudoku Puzzle](https://www.sudokupuzzle.org) ( <https://www.sudokupuzzle.org> )

## Classic Sudoku

Place a digit from 1 to 9 into each of the empty squares so that each digit appears exactly once in each of the rows, columns and the nine outlined 3x3 regions.



(Solution)

					9	4		5
			4	7			6	
5	9							
		1		2		7		
4				5				3
		3		9		8		
							2	6
	2			3	1			
8		6	9					

© sudoku.today

[Sudoku Today](https://sudoku.today) ( <https://sudoku.today> )

[Samurai Sudoku](https://samuraisudoku.com) ( <https://samuraisudoku.com> )

[Newdoku](https://newdoku.com) ( <https://newdoku.com> )

[Sudoku Puzzle](https://www.sudokupuzzle.org) ( <https://www.sudokupuzzle.org> )

## Classic Sudoku

Place a digit from 1 to 9 into each of the empty squares so that each digit appears exactly once in each of the rows, columns and the nine outlined 3x3 regions.



(Solution)

7				9		3	6	
2					4	1		
	6							5
			3			2	4	
	9	3			2			
6							1	
		1	6					8
	5	9		2				4

© sudoku.today

[Sudoku Today](https://sudoku.today) ( <https://sudoku.today> )

[Samurai Sudoku](https://samuraisudoku.com) ( <https://samuraisudoku.com> )

[Newdoku](https://newdoku.com) ( <https://newdoku.com> )

[Sudoku Puzzle](https://www.sudokupuzzle.org) ( <https://www.sudokupuzzle.org> )

## Classic Sudoku

Place a digit from 1 to 9 into each of the empty squares so that each digit appears exactly once in each of the rows, columns and the nine outlined 3x3 regions.



(Solution)

		3			5		7	
7								2
							9	1
			8	4		9		
	3	9		6		2	1	
		6		2	1			
3	1							
4								5
	6		2			8		

© sudoku.today

[Sudoku Today](https://sudoku.today) ( <https://sudoku.today> )

[Samurai Sudoku](https://samuraisudoku.com) ( <https://samuraisudoku.com> )

[Newdoku](https://newdoku.com) ( <https://newdoku.com> )

[Sudoku Puzzle](https://www.sudokupuzzle.org) ( <https://www.sudokupuzzle.org> )

## Classic Sudoku

Place a digit from 1 to 9 into each of the empty squares so that each digit appears exactly once in each of the rows, columns and the nine outlined 3x3 regions.



(Solution)

	2			6				
			7		5			
5		9		3	2			
4	8			2				1
	7						4	
9				7			2	3
			2	1		8		7
			6		8			
				9			3	

© sudoku.today

[Sudoku Today](https://sudoku.today) ( <https://sudoku.today> )

[Samurai Sudoku](https://samuraisudoku.com) ( <https://samuraisudoku.com> )

[Newdoku](https://newdoku.com) ( <https://newdoku.com> )

[Sudoku Puzzle](https://www.sudokupuzzle.org) ( <https://www.sudokupuzzle.org> )

## Classic Sudoku

Place a digit from 1 to 9 into each of the empty squares so that each digit appears exactly once in each of the rows, columns and the nine outlined 3x3 regions.



(Solution)

	4		5					
		7	8	4				
8		2	1					5
						9	6	
5								3
	6	9						
2					1	8		6
				5	6	7		
					7		1	

© sudoku.today

[Sudoku Today](https://sudoku.today) ( <https://sudoku.today> )

[Samurai Sudoku](https://samuraisudoku.com) ( <https://samuraisudoku.com> )

[Newdoku](https://newdoku.com) ( <https://newdoku.com> )

[Sudoku Puzzle](https://www.sudokupuzzle.org) ( <https://www.sudokupuzzle.org> )

## Classic Sudoku

Place a digit from 1 to 9 into each of the empty squares so that each digit appears exactly once in each of the rows, columns and the nine outlined 3x3 regions.



(Solution)

1				7	2			
9					8		6	
			3					2
	1	6				4		
	3						2	
		7				9	5	
3					5			
	2		4					8
			6	8				1

© sudoku.today

[Sudoku Today](https://sudoku.today) ( <https://sudoku.today> )

[Samurai Sudoku](https://samuraisudoku.com) ( <https://samuraisudoku.com> )

[Newdoku](https://newdoku.com) ( <https://newdoku.com> )

[Sudoku Puzzle](https://www.sudokupuzzle.org) ( <https://www.sudokupuzzle.org> )

## Classic Sudoku

Place a digit from 1 to 9 into each of the empty squares so that each digit appears exactly once in each of the rows, columns and the nine outlined 3x3 regions.



(Solution)

						6		
		4			6	3		
3	6				1			8
	2	6			7			
1								5
			8			4	2	
2			4				3	7
		9	5			1		
		8						

© sudoku.today

[Sudoku Today](https://sudoku.today) ( <https://sudoku.today> )

[Samurai Sudoku](https://samuraisudoku.com) ( <https://samuraisudoku.com> )

[Newdoku](https://newdoku.com) ( <https://newdoku.com> )

[Sudoku Puzzle](https://www.sudokupuzzle.org) ( <https://www.sudokupuzzle.org> )