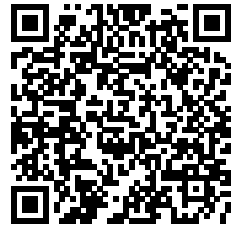


## Quad Sums Sudoku

Place a digit from 1 to 9 into each of the empty squares so that each digit appears exactly once in each of the rows, columns and the nine outlined 3x3 regions.

One of the numbers in the four cells around a dot is the num of the other three numbers.



(Solution)

9				6			5	
4					7		2	
								4
	7		1				6	
			4		5			
	8				9		1	
5								
	1		9					2
	9			5				1

© sudoku.today

[Sudoku Today](https://sudoku.today) ( <https://sudoku.today> )

[Samurai Sudoku](https://samuraisudoku.com) ( <https://samuraisudoku.com> )

[Newdoku](https://newdoku.com) ( <https://newdoku.com> )

[Sudoku Puzzle](https://www.sudokupuzzle.org) ( <https://www.sudokupuzzle.org> )

## Sums Sudoku

Place a digit from 1 to 9 into each of the empty squares so that each digit appears exactly once in each of the rows, columns and the nine outlined 3x3 regions.

A number between two cells indicates the sum of the numbers in these cells. A number between four cells indicates the sum between two diagonally adjacent cells, either top left + right bottom (\) or top right + bottom left (/).



(Solution)

			6						8
					16				
				9	13				11
				14					
						5			
		11							
							9		
					\6				
						11			
					11		/5		
			10						
	/4	/15			7				
					5				
	\6				\10			7	
			6						

© sudoku.today

[Sudoku Today](https://sudoku.today) ( <https://sudoku.today> )

[Samurai Sudoku](https://samuraisudoku.com) ( <https://samuraisudoku.com> )

[Newdoku](https://newdoku.com) ( <https://newdoku.com> )

[Sudoku Puzzle](https://www.sudokupuzzle.org) ( <https://www.sudokupuzzle.org> )

## XV Sudoku

Place a digit from 1 to 9 into each of the empty squares so that each digit appears exactly once in each of the rows, columns and the nine outlined 3x3 regions.

Adjacent cells with digits summing to 5 are marked by V, while those summing to 10 are marked by X. Not all possible V and X are marked.



(Solution)

				X				
					X		9	
X	X							
	7		X	2		3		
			5					3
			X		V			
3					6			
		3	X		5		4	
		V		V			V	
	5		V					
		V	X		X			

© sudoku.today

[Sudoku Today](https://sudoku.today) ( <https://sudoku.today> )

[Samurai Sudoku](https://samuraisudoku.com) ( <https://samuraisudoku.com> )

[Newdoku](https://newdoku.com) ( <https://newdoku.com> )

[Sudoku Puzzle](https://www.sudokupuzzle.org) ( <https://www.sudokupuzzle.org> )

## Clone Sudoku

Place a digit from 1 to 9 into each of the empty squares so that each digit appears exactly once in each of the rows, columns and the nine outlined 3x3 regions.

Grey cells in the grid represent many cloned areas. Digits in these areas on corresponding positions must be identical. Cloned areas are only moved, without rotation or reflection.



(Solution)

4								
6		1	8					7
		7	1			9	4	
				7				
	6	9			4	7		
7					5	4		2
								1

© sudoku.today

[Sudoku Today](https://sudoku.today) ( <https://sudoku.today> )

[Samurai Sudoku](https://samuraisudoku.com) ( <https://samuraisudoku.com> )

[Newdoku](https://newdoku.com) ( <https://newdoku.com> )

[Sudoku Puzzle](https://www.sudokupuzzle.org) ( <https://www.sudokupuzzle.org> )

# Products Sudoku

Place a digit from 1 to 9 into each of the empty squares so that each digit appears exactly once in each of the rows, columns and the nine outlined 3x3 regions.

A number between two cells indicates the product of the numbers in these cells. A number between four cells indicates the product between two diagonally adjacent cells, either top left + right bottom (\) or top right + bottom left (/).



(Solution)

8			7					
	4					3		
	20							2
		3				/4		
	2		7					
			12		/14			15
42								
			\25			\72		
				27				
	6			6				16
			12					

© sudoku.today

[Sudoku Today](https://sudoku.today) ( <https://sudoku.today> )  
[Samurai Sudoku](https://samuraisudoku.com) ( <https://samuraisudoku.com> )

[Newdoku](https://newdoku.com) ( <https://newdoku.com> )  
[Sudoku Puzzle](https://www.sudokupuzzle.org) ( <https://www.sudokupuzzle.org> )

## Windoku

Place a digit from 1 to 9 into each of the empty squares so that each digit appears exactly once in each of the rows, columns and the nine outlined 3x3 regions.

Each of the four shaded 3x3 boxes contains each digit from 1 to 9.



(Solution)

		9	6	2			7	
		2			4			
	3		8	5	1			9
		5			7			
9								6
			3			7		
7			5	8	2		3	
			7			6		
	5			1	6	9		

© sudoku.today

[Sudoku Today](https://sudoku.today) ( <https://sudoku.today> )

[Samurai Sudoku](https://samuraisudoku.com) ( <https://samuraisudoku.com> )

[Newdoku](https://newdoku.com) ( <https://newdoku.com> )

[Sudoku Puzzle](https://www.sudokupuzzle.org) ( <https://www.sudokupuzzle.org> )

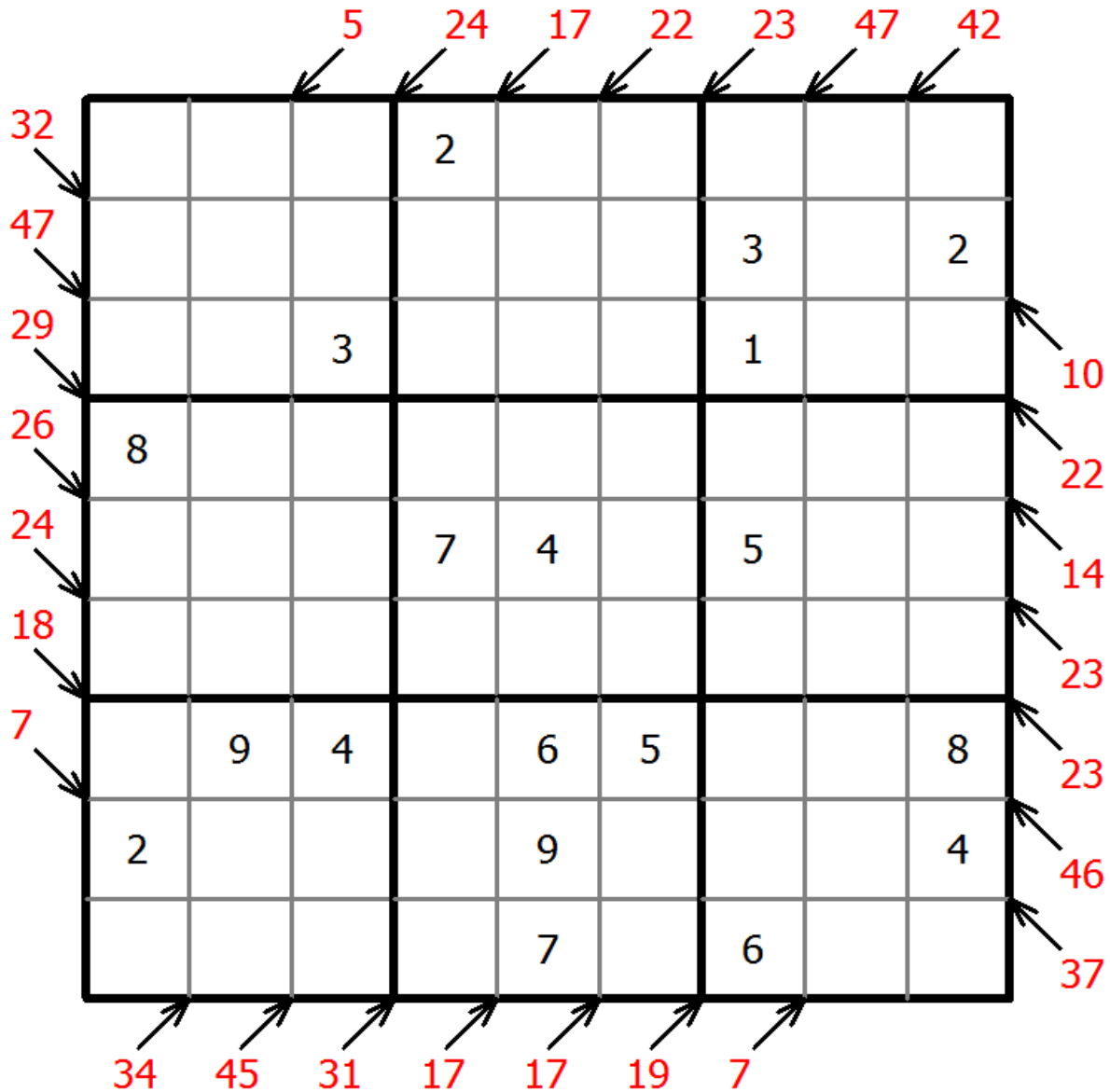
## Little killer sudoku

Place a digit from 1 to 9 into each of the empty squares so that each digit appears exactly once in each of the rows, columns and the nine outlined 3x3 regions.

Numbers with arrows indicate sum of the numbers in each direction.



(Solution)



© sudoku.today

[Sudoku Today](https://sudoku.today) ( <https://sudoku.today> )

[Samurai Sudoku](https://samuraisudoku.com) ( <https://samuraisudoku.com> )

[Newdoku](https://newdoku.com) ( <https://newdoku.com> )

[Sudoku Puzzle](https://www.sudokupuzzle.org) ( <https://www.sudokupuzzle.org> )

## Thermo Sudoku

Place a digit from 1 to 9 into each of the empty squares so that each digit appears exactly once in each of the rows, columns and the nine outlined 3x3 regions.

Some thermometer shapes are placed in the grid. Digits are strictly increasing from the round bulb of the thermometer to each flat end.



(Solution)

	1		7					
8							2	
2	5							
					7			2
	3							
	8				2		5	6
6	7							9

© sudoku.today

[Sudoku Today](https://sudoku.today) ( <https://sudoku.today> )

[Samurai Sudoku](https://samuraisudoku.com) ( <https://samuraisudoku.com> )

[Newdoku](https://newdoku.com) ( <https://newdoku.com> )

[Sudoku Puzzle](https://www.sudokupuzzle.org) ( <https://www.sudokupuzzle.org> )



# Products Sudoku

Place a digit from 1 to 9 into each of the empty squares so that each digit appears exactly once in each of the rows, columns and the nine outlined 3x3 regions.

A number between two cells indicates the product of the numbers in these cells. A number between four cells indicates the product between two diagonally adjacent cells, either top left + right bottom (\) or top right + bottom left (/).



(Solution)

6					4	8		
		2				24		
					54			
					63			
		4		\18		28		
	18					18		5
48								5
		21					3	
		15			8	7		
7			9		6			

© sudoku.today

[Sudoku Today](https://sudoku.today) ( <https://sudoku.today> )  
[Samurai Sudoku](https://samuraisudoku.com) ( <https://samuraisudoku.com> )

[Newdoku](https://newdoku.com) ( <https://newdoku.com> )  
[Sudoku Puzzle](https://www.sudokupuzzle.org) ( <https://www.sudokupuzzle.org> )

### Hybrid Sudoku ( Consecutive Pairs + Sum Frame )

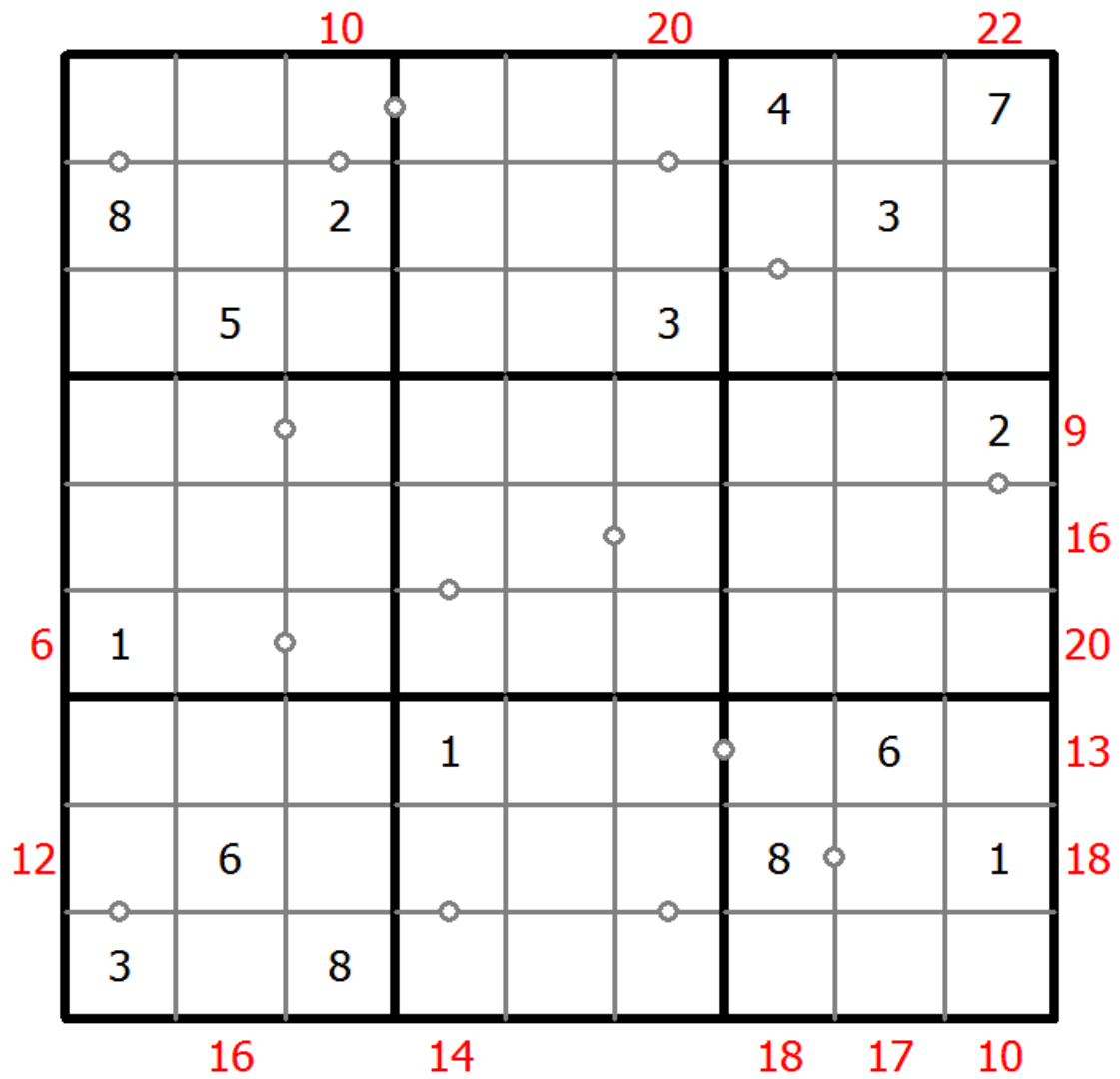
Place a digit from 1 to 9 into each of the empty squares so that each digit appears exactly once in each of the rows, columns and the nine outlined 3x3 regions.

There are some dots between cells. The numbers on each side of a dot must always be consecutive. Not all possible dots are marked.

Digits outside the grid indicate the sum of the first 3 digits in the corresponding direction.



(Solution)



© sudoku.today

[Sudoku Today](https://sudoku.today) ( https://sudoku.today )

[Samurai Sudoku](https://samuraisudoku.com) ( https://samuraisudoku.com )

[Newdoku](https://newdoku.com) ( https://newdoku.com )

[Sudoku Puzzle](https://www.sudokupuzzle.org) ( https://www.sudokupuzzle.org )

## XV Sudoku

Place a digit from 1 to 9 into each of the empty squares so that each digit appears exactly once in each of the rows, columns and the nine outlined 3x3 regions.

Adjacent cells with digits summing to 5 are marked by V, while those summing to 10 are marked by X. Not all possible V and X are marked.



(Solution)

		X				2		
	V		V		5		6	7
9		X						
			X					
			X		1	3	4	
		6		5		7		
X								X
	4	1	7	X				
		4	X		1			8
					X			
6	2		5				V	
							X	V
		5						

© sudoku.today

[Sudoku Today](https://sudoku.today) ( <https://sudoku.today> )

[Samurai Sudoku](https://samuraisudoku.com) ( <https://samuraisudoku.com> )

[Newdoku](https://newdoku.com) ( <https://newdoku.com> )

[Sudoku Puzzle](https://www.sudokupuzzle.org) ( <https://www.sudokupuzzle.org> )

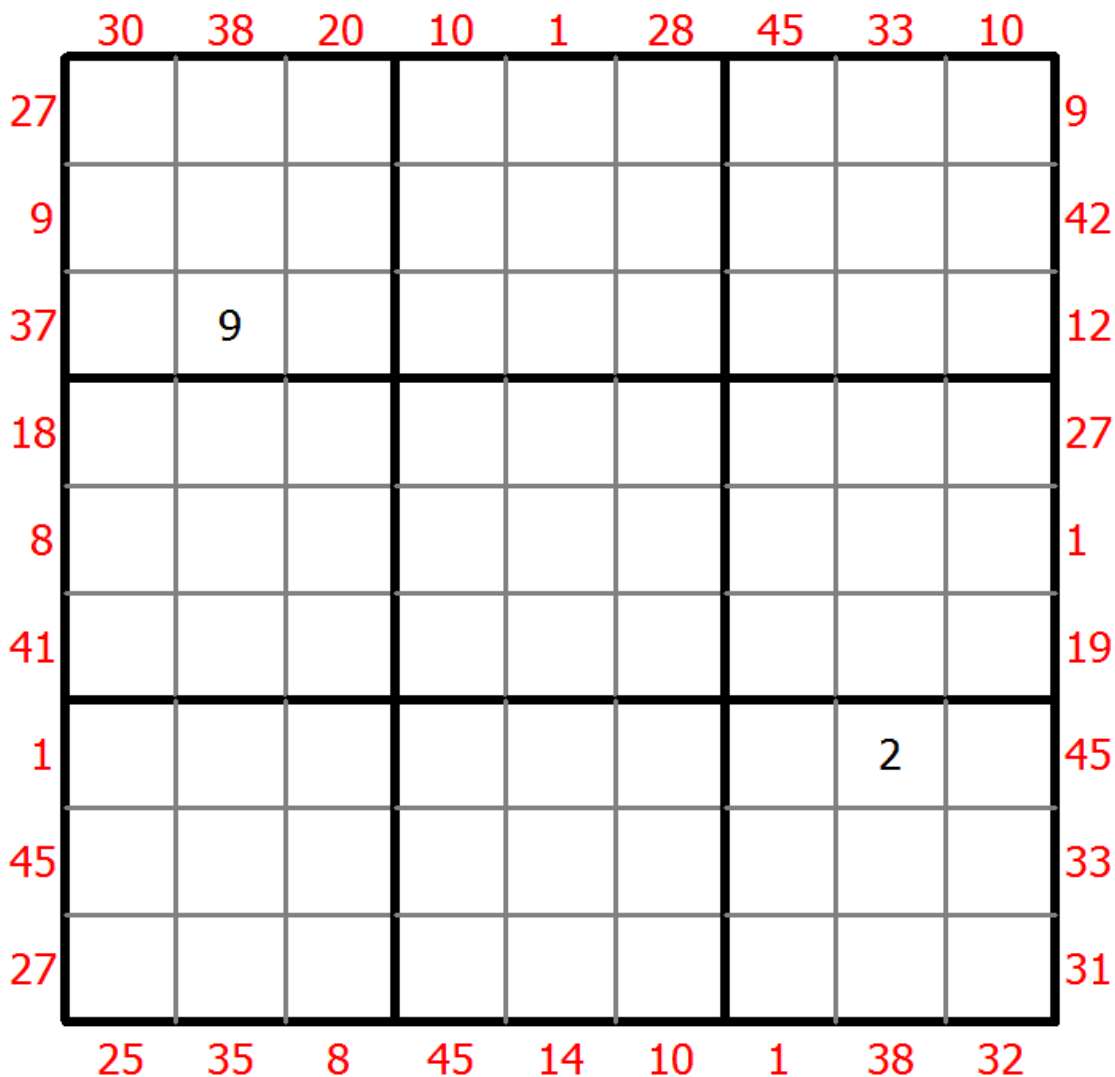
# X Sums Sudoku

Place a digit from 1 to 9 into each of the empty squares so that each digit appears exactly once in each of the rows, columns and the nine outlined 3x3 regions.

Each number outside the grid is the sum of the first X numbers placed in the corresponding direction, where X is equal to the first number placed in that direction.



(Solution)



© sudoku.today

[Sudoku Today](https://sudoku.today) ( <https://sudoku.today> )

[Samurai Sudoku](https://samuraisudoku.com) ( <https://samuraisudoku.com> )

[Newdoku](https://newdoku.com) ( <https://newdoku.com> )

[Sudoku Puzzle](https://www.sudokupuzzle.org) ( <https://www.sudokupuzzle.org> )

# Neighbourship Sudoku

Place a digit from 1 to 9 into each of the empty squares so that each digit appears exactly once in each of the rows, columns and the nine outlined 3x3 regions.

A number in a squared cell indicates how many different numbers the four diagonally adjacent cells contain. A number in a circled cell indicates how many different numbers the eight orthogonally and diagonally adjacent cells contain.



(Solution)

			2				4	
				1				
7			<input type="text"/>			3		2
	<input type="text"/>	<input type="text"/>	6					<input type="text"/>
8			1					
3	1	<input type="text"/>			<input type="text"/>	7		
		8		<input type="text"/>				
<input type="text"/>						<input type="text"/>		
			5				8	7

© sudoku.today

[Sudoku Today](https://sudoku.today) ( <https://sudoku.today> )  
[Samurai Sudoku](https://samuraisudoku.com) ( <https://samuraisudoku.com> )

[Newdoku](https://newdoku.com) ( <https://newdoku.com> )  
[Sudoku Puzzle](https://www.sudokupuzzle.org) ( <https://www.sudokupuzzle.org> )

# Makodoku

Place a digit from 1 to 9 into each of the empty squares so that each digit appears exactly once in each of the rows, columns and the nine outlined 3x3 regions.

A cross between two cells indicates that the product of the numbers in these cells is less than 10. A plus between two cells indicates that the sum of the numbers in these cells is less than 10. If the sum and product are less than 10, then there is a cross between these cells. If there is no sign between two cells, then both sum and product are at least 10.



(Solution)

	x	x		+	x		8		
		x	+		+	+			
				x	x		4	+	+
			+				+	+	+
	+						x	+	+
x							+		
	+	7				x	+		
	+				+	+		+	
	+				+			+	+
	+	+			+	+	+		5
		+			x				x
			+		+				x
			+	3		x	x		
	+		x			+		+	
		+	1	x				+	+

© sudoku.today

[Sudoku Today](https://sudoku.today) ( https://sudoku.today )  
[Samurai Sudoku](https://samuraisudoku.com) ( https://samuraisudoku.com )

[Newdoku](https://newdoku.com) ( https://newdoku.com )  
[Sudoku Puzzle](https://www.sudoku-puzzle.org) ( https://www.sudoku-puzzle.org )

### Hybrid Sudoku ( Consecutive Pairs + Sum Frame )

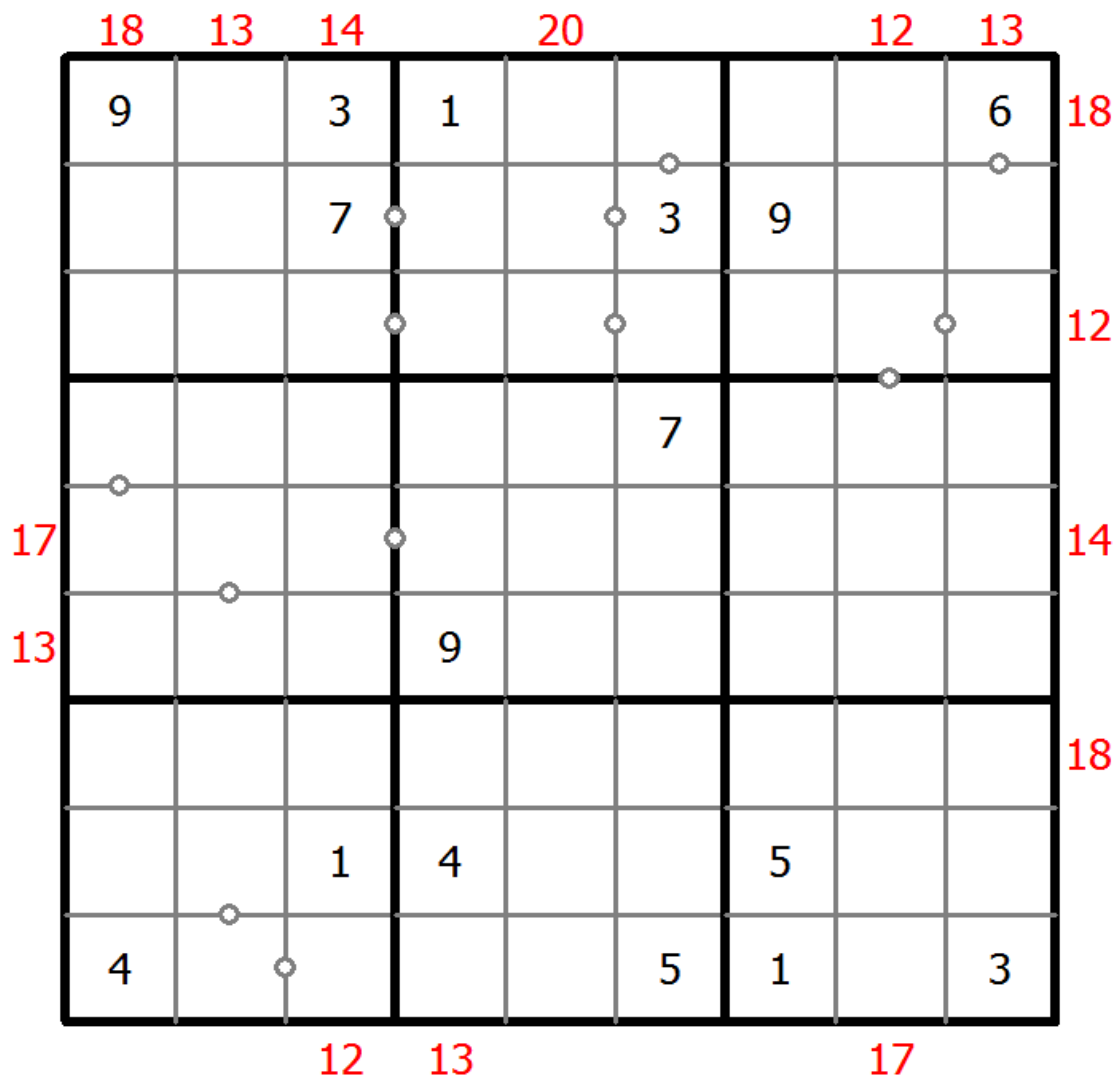
Place a digit from 1 to 9 into each of the empty squares so that each digit appears exactly once in each of the rows, columns and the nine outlined 3x3 regions.

There are some dots between cells. The numbers on each side of a dot must always be consecutive. Not all possible dots are marked.

Digits outside the grid indicate the sum of the first 3 digits in the corresponding direction.



(Solution)



© sudoku.today

[Sudoku Today](https://sudoku.today) ( https://sudoku.today )

[Samurai Sudoku](https://samuraisudoku.com) ( https://samuraisudoku.com )

[Newdoku](https://newdoku.com) ( https://newdoku.com )

[Sudoku Puzzle](https://www.sudokupuzzle.org) ( https://www.sudokupuzzle.org )

## Multi Diagonal Sudoku

Place a digit from 1 to 9 into each of the empty squares so that each digit appears exactly once in each of the rows, columns and the nine outlined 3x3 regions.

Digits do not repeat along the marked diagonals.



(Solution)

		4				7		
5	6				1			4
1	7				8			3
	8	7					4	
	4			6			7	
	1					2	5	
7			9				2	6
4			5				3	7
		1				8		

© sudoku.today

[Sudoku Today](https://sudoku.today) ( <https://sudoku.today> )

[Samurai Sudoku](https://samuraisudoku.com) ( <https://samuraisudoku.com> )

[Newdoku](https://newdoku.com) ( <https://newdoku.com> )

[Sudoku Puzzle](https://www.sudokupuzzle.org) ( <https://www.sudokupuzzle.org> )



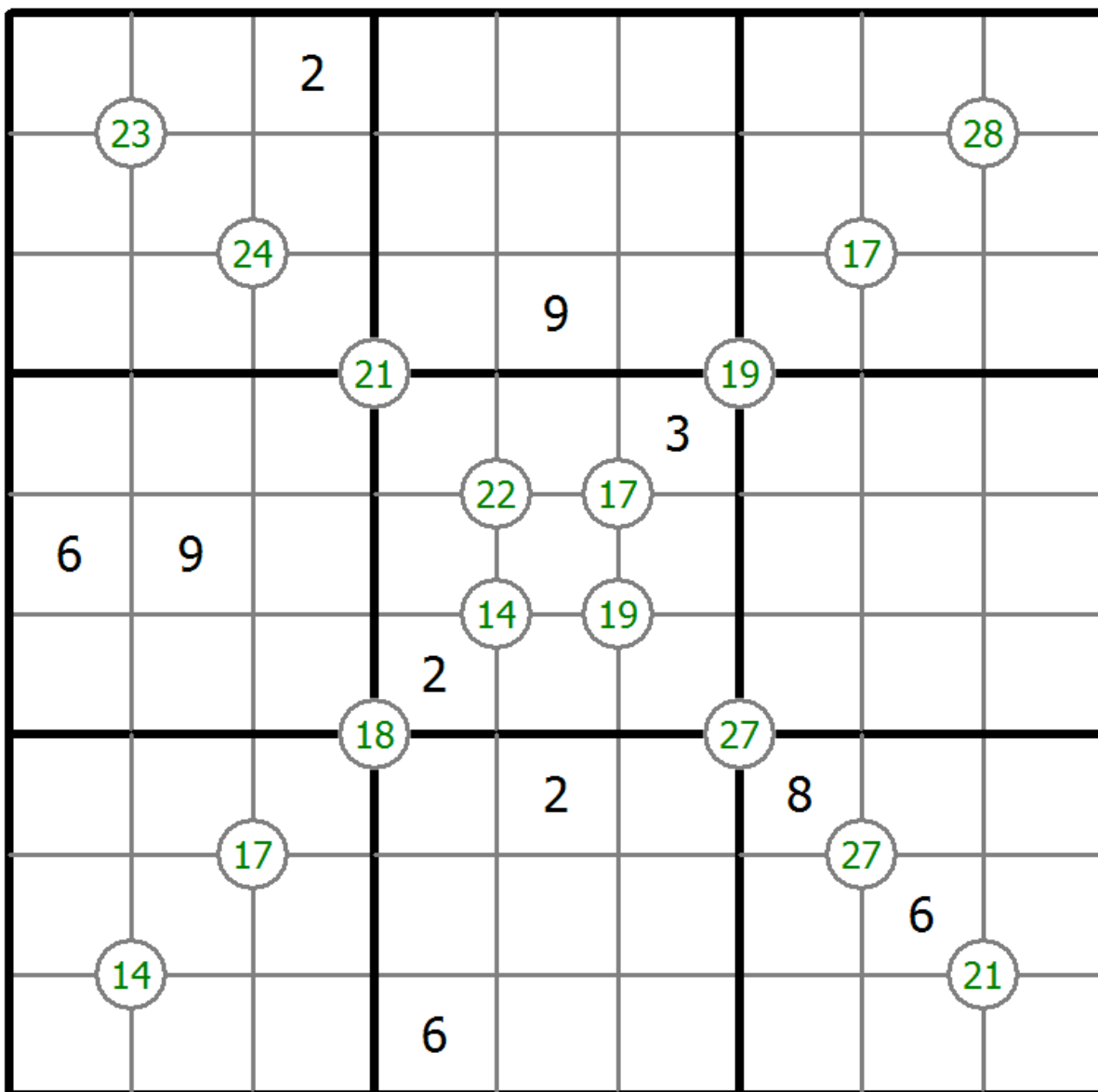
# Group Sum Sudoku

Place a digit from 1 to 9 into each of the empty squares so that each digit appears exactly once in each of the rows, columns and the nine outlined 3x3 regions.

Each number at the intersection of four cells is the sum of digits in those four cells.



(Solution)



© sudoku.today

[Sudoku Today](https://sudoku.today) ( <https://sudoku.today> )  
[Samurai Sudoku](https://samuraisudoku.com) ( <https://samuraisudoku.com> )

[Newdoku](https://newdoku.com) ( <https://newdoku.com> )  
[Sudoku Puzzle](https://www.sudokupuzzle.org) ( <https://www.sudokupuzzle.org> )

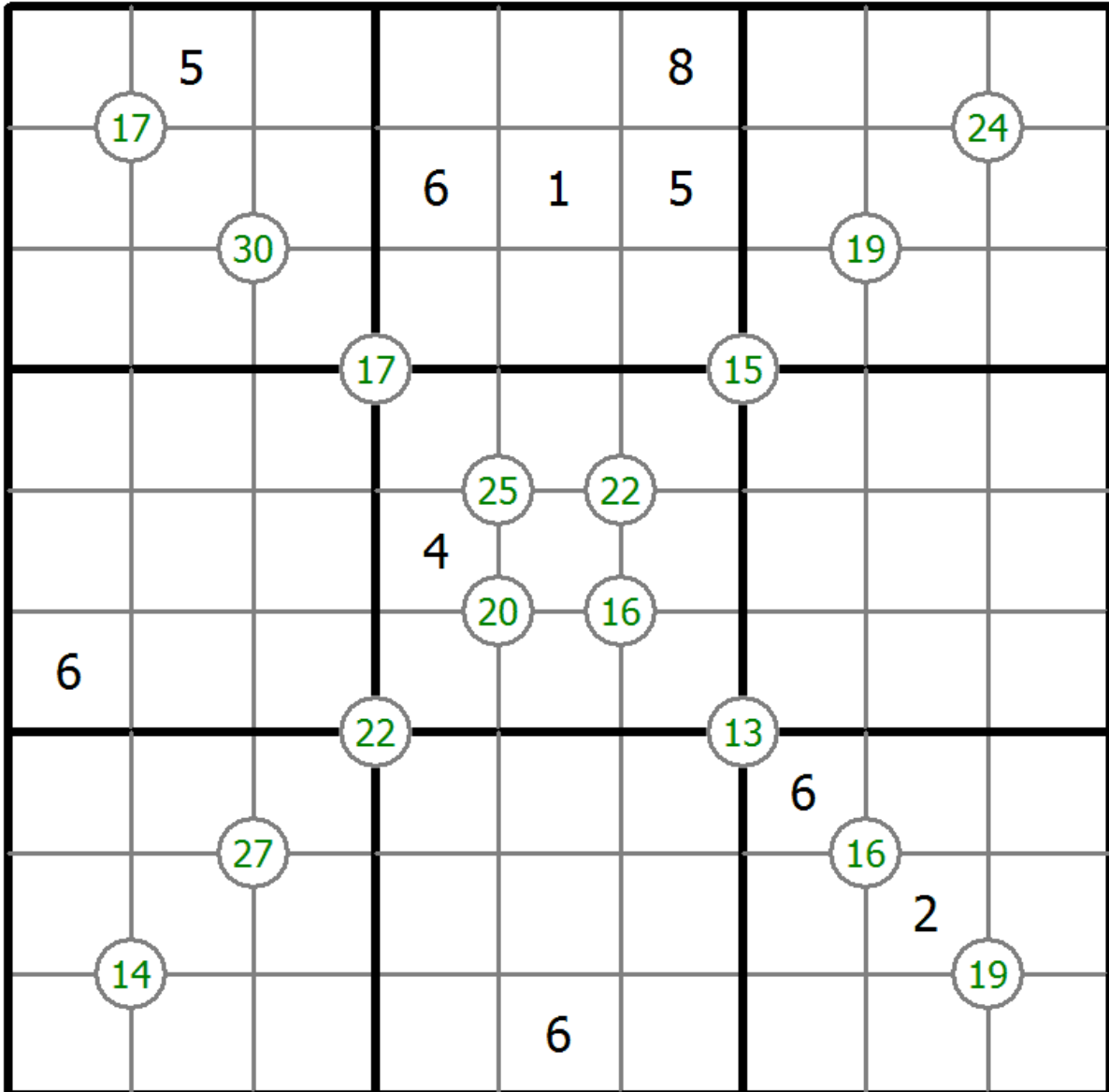
# Group Sum Sudoku

Place a digit from 1 to 9 into each of the empty squares so that each digit appears exactly once in each of the rows, columns and the nine outlined 3x3 regions.

Each number at the intersection of four cells is the sum of digits in those four cells.



(Solution)



© sudoku.today

[Sudoku Today](https://sudoku.today) ( https://sudoku.today )  
[Samurai Sudoku](https://samuraisudoku.com) ( https://samuraisudoku.com )

[Newdoku](https://newdoku.com) ( https://newdoku.com )  
[Sudoku Puzzle](https://www.sudokupuzzle.org) ( https://www.sudokupuzzle.org )

### Hybrid Sudoku ( X Sums + Greater Than )

Place a digit from 1 to 9 into each of the empty squares so that each digit appears exactly once in each of the rows, columns and the nine outlined 3x3 regions.

Each number outside the grid is the sum of the first X numbers placed in the corresponding direction, where X is equal to the first number placed in that direction.

Digits have to be placed in accordance with the "greater than" signs.



(Solution)

	21		25			14		41		1		45
					>			>				45
23			<		v							33
13							>		>		>	
									^			1
1		2		v		<				8		^
				v		<						21
					v							21
							v					21
								^				39
									>			39
										<		33
												33
	8		1			20						

© sudoku.today

[Sudoku Today](https://sudoku.today) ( <https://sudoku.today> )

[Samurai Sudoku](https://samuraisudoku.com) ( <https://samuraisudoku.com> )

[Newdoku](https://newdoku.com) ( <https://newdoku.com> )

[Sudoku Puzzle](https://www.sudokupuzzle.org) ( <https://www.sudokupuzzle.org> )

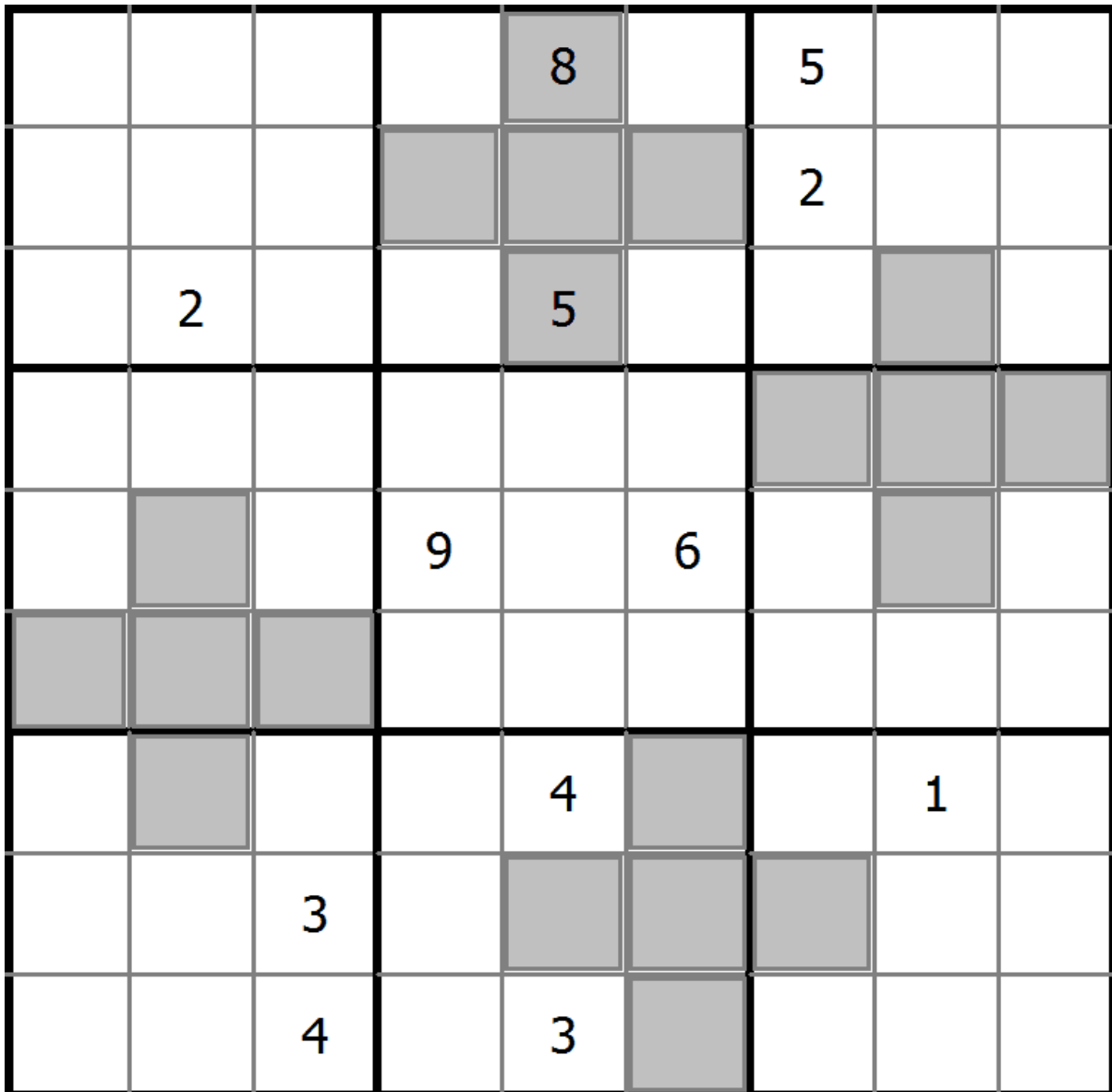
## Clone Sudoku

Place a digit from 1 to 9 into each of the empty squares so that each digit appears exactly once in each of the rows, columns and the nine outlined 3x3 regions.

Grey cells in the grid represent many cloned areas. Digits in these areas on corresponding positions must be identical. Cloned areas are only moved, without rotation or reflection.



(Solution)



© sudoku.today

[Sudoku Today](https://sudoku.today) ( <https://sudoku.today> )

[Samurai Sudoku](https://samuraisudoku.com) ( <https://samuraisudoku.com> )

[Newdoku](https://newdoku.com) ( <https://newdoku.com> )

[Sudoku Puzzle](https://www.sudokupuzzle.org) ( <https://www.sudokupuzzle.org> )

## Classic Sudoku

Place a digit from 1 to 9 into each of the empty squares so that each digit appears exactly once in each of the rows, columns and the nine outlined 3x3 regions.



(Solution)

								8
6		4	2			3		
9	5	8		6		7		
7			8				4	
			7		1			
	3				5			7
		7		4		9	8	1
		5			8	6		4
4								

© sudoku.today

[Sudoku Today](https://sudoku.today) ( <https://sudoku.today> )

[Samurai Sudoku](https://samuraisudoku.com) ( <https://samuraisudoku.com> )

[Newdoku](https://newdoku.com) ( <https://newdoku.com> )

[Sudoku Puzzle](https://www.sudokupuzzle.org) ( <https://www.sudokupuzzle.org> )

## Classic Sudoku

Place a digit from 1 to 9 into each of the empty squares so that each digit appears exactly once in each of the rows, columns and the nine outlined 3x3 regions.



(Solution)

	3				9	4		6
				8				7
					5			
2						6	5	
			3		8			
	1	7						4
			1					
5				9				
9		2	4				8	

© sudoku.today

[Sudoku Today](https://sudoku.today) ( <https://sudoku.today> )

[Samurai Sudoku](https://samuraisudoku.com) ( <https://samuraisudoku.com> )

[Newdoku](https://newdoku.com) ( <https://newdoku.com> )

[Sudoku Puzzle](https://www.sudokupuzzle.org) ( <https://www.sudokupuzzle.org> )

## Classic Sudoku

Place a digit from 1 to 9 into each of the empty squares so that each digit appears exactly once in each of the rows, columns and the nine outlined 3x3 regions.



(Solution)

9			8				4	
					1	6	7	
			9	6				8
4							8	
	2			7			9	
	1							4
2				1	9			
	8	9	3					
	6				2			5

© sudoku.today

[Sudoku Today](https://sudoku.today) ( <https://sudoku.today> )

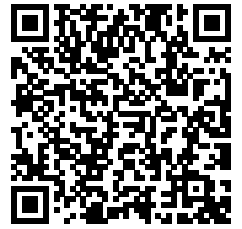
[Samurai Sudoku](https://samuraisudoku.com) ( <https://samuraisudoku.com> )

[Newdoku](https://newdoku.com) ( <https://newdoku.com> )

[Sudoku Puzzle](https://www.sudokupuzzle.org) ( <https://www.sudokupuzzle.org> )

## Classic Sudoku

Place a digit from 1 to 9 into each of the empty squares so that each digit appears exactly once in each of the rows, columns and the nine outlined 3x3 regions.



(Solution)

		4					8	
		8		3			2	5
					2	4		
				9	6			8
	8						3	
2			5	1				
		6	7					
5	7			2		3		
	1					7		

© sudoku.today

[Sudoku Today](https://sudoku.today) ( <https://sudoku.today> )

[Samurai Sudoku](https://samuraisudoku.com) ( <https://samuraisudoku.com> )

[Newdoku](https://newdoku.com) ( <https://newdoku.com> )

[Sudoku Puzzle](https://www.sudokupuzzle.org) ( <https://www.sudokupuzzle.org> )



## Classic Sudoku

Place a digit from 1 to 9 into each of the empty squares so that each digit appears exactly once in each of the rows, columns and the nine outlined 3x3 regions.



(Solution)

		8		9	6			
			2		1	5		
		6				3		
	6	1	8					
4				6				3
					4	2	9	
		4				1		
		7	5		8			
			1	2		9		

© sudoku.today

[Sudoku Today](https://sudoku.today) ( <https://sudoku.today> )

[Samurai Sudoku](https://samuraisudoku.com) ( <https://samuraisudoku.com> )

[Newdoku](https://newdoku.com) ( <https://newdoku.com> )

[Sudoku Puzzle](https://www.sudokupuzzle.org) ( <https://www.sudokupuzzle.org> )

## Classic Sudoku

Place a digit from 1 to 9 into each of the empty squares so that each digit appears exactly once in each of the rows, columns and the nine outlined 3x3 regions.



(Solution)

	1			3			8	
		7			6		4	
						9	2	
4		6			5			
			3		2			
			6			3		5
	7	2						
	5		8			4		
	6			5			1	

© sudoku.today

[Sudoku Today](https://sudoku.today) ( <https://sudoku.today> )

[Samurai Sudoku](https://samuraisudoku.com) ( <https://samuraisudoku.com> )

[Newdoku](https://newdoku.com) ( <https://newdoku.com> )

[Sudoku Puzzle](https://www.sudokupuzzle.org) ( <https://www.sudokupuzzle.org> )

## Classic Sudoku

Place a digit from 1 to 9 into each of the empty squares so that each digit appears exactly once in each of the rows, columns and the nine outlined 3x3 regions.



(Solution)

3		6					5	
				9			8	
8	4				6			
1				5				
7	5						6	2
				8				3
			4				2	5
	7			1				
	2					8		6

© sudoku.today

[Sudoku Today](https://sudoku.today) ( <https://sudoku.today> )

[Samurai Sudoku](https://samuraisudoku.com) ( <https://samuraisudoku.com> )

[Newdoku](https://newdoku.com) ( <https://newdoku.com> )

[Sudoku Puzzle](https://www.sudokupuzzle.org) ( <https://www.sudokupuzzle.org> )

## Classic Sudoku

Place a digit from 1 to 9 into each of the empty squares so that each digit appears exactly once in each of the rows, columns and the nine outlined 3x3 regions.



(Solution)

				3	9		5	4
				6			8	
		3					1	
		8				9		
9			2		4			7
		2				6		
	7					1		
	8			2				
3	5		1	7				

© sudoku.today

[Sudoku Today](https://sudoku.today) ( <https://sudoku.today> )

[Samurai Sudoku](https://samuraisudoku.com) ( <https://samuraisudoku.com> )

[Newdoku](https://newdoku.com) ( <https://newdoku.com> )

[Sudoku Puzzle](https://www.sudokupuzzle.org) ( <https://www.sudokupuzzle.org> )

## Classic Sudoku

Place a digit from 1 to 9 into each of the empty squares so that each digit appears exactly once in each of the rows, columns and the nine outlined 3x3 regions.



(Solution)

		7						5
			4	8				
		4	9		6			
	8		2					6
3								2
5					7		8	
			3		9	4		
				5	2			
2						1		

© sudoku.today

[Sudoku Today](https://sudoku.today) ( <https://sudoku.today> )

[Samurai Sudoku](https://samuraisudoku.com) ( <https://samuraisudoku.com> )

[Newdoku](https://newdoku.com) ( <https://newdoku.com> )

[Sudoku Puzzle](https://www.sudokupuzzle.org) ( <https://www.sudokupuzzle.org> )

## Classic Sudoku

Place a digit from 1 to 9 into each of the empty squares so that each digit appears exactly once in each of the rows, columns and the nine outlined 3x3 regions.



(Solution)

		9	8				3	
								4
	8			3	1		9	5
		3						8
4								9
6						7		
2	1		6	7			5	
8								
	7				2	8		

© sudoku.today

[Sudoku Today](https://sudoku.today) ( <https://sudoku.today> )

[Samurai Sudoku](https://samuraisudoku.com) ( <https://samuraisudoku.com> )

[Newdoku](https://newdoku.com) ( <https://newdoku.com> )

[Sudoku Puzzle](https://www.sudokupuzzle.org) ( <https://www.sudokupuzzle.org> )

## Classic Sudoku

Place a digit from 1 to 9 into each of the empty squares so that each digit appears exactly once in each of the rows, columns and the nine outlined 3x3 regions.



(Solution)

				8		4		
2			3		6		7	
3		9						
	1		8			2		
		5		4		7		
		4			9		5	
						8		9
	5		6		2			7
		6		7				

© sudoku.today

[Sudoku Today](https://sudoku.today) ( <https://sudoku.today> )

[Samurai Sudoku](https://samuraisudoku.com) ( <https://samuraisudoku.com> )

[Newdoku](https://newdoku.com) ( <https://newdoku.com> )

[Sudoku Puzzle](https://www.sudokupuzzle.org) ( <https://www.sudokupuzzle.org> )

## Classic Sudoku

Place a digit from 1 to 9 into each of the empty squares so that each digit appears exactly once in each of the rows, columns and the nine outlined 3x3 regions.



(Solution)

		8	7			4		
							6	
2		4			6	1		
					3		4	
	5		4	7	9		3	
	7		8					
		1	2			5		4
	9							
		7			1	2		

© sudoku.today

[Sudoku Today](https://sudoku.today) ( <https://sudoku.today> )

[Samurai Sudoku](https://samuraisudoku.com) ( <https://samuraisudoku.com> )

[Newdoku](https://newdoku.com) ( <https://newdoku.com> )

[Sudoku Puzzle](https://www.sudokupuzzle.org) ( <https://www.sudokupuzzle.org> )



## Classic Sudoku

Place a digit from 1 to 9 into each of the empty squares so that each digit appears exactly once in each of the rows, columns and the nine outlined 3x3 regions.



(Solution)

6					2		4	
3	1		4					
					7		2	5
					3	5		
4				5				1
		9	8					
7	8		6					
					4		8	9
	9		2					4

© sudoku.today

[Sudoku Today](https://sudoku.today) ( <https://sudoku.today> )

[Samurai Sudoku](https://samuraisudoku.com) ( <https://samuraisudoku.com> )

[Newdoku](https://newdoku.com) ( <https://newdoku.com> )

[Sudoku Puzzle](https://www.sudokupuzzle.org) ( <https://www.sudokupuzzle.org> )

## Classic Sudoku

Place a digit from 1 to 9 into each of the empty squares so that each digit appears exactly once in each of the rows, columns and the nine outlined 3x3 regions.



(Solution)

	6	8						
9					8	7		
			1				5	
		7	2				9	
4		1		7		8		3
	8				3	4		
	2				5			
		5	4					2
						3	7	

© sudoku.today

[Sudoku Today](https://sudoku.today) ( <https://sudoku.today> )

[Samurai Sudoku](https://samuraisudoku.com) ( <https://samuraisudoku.com> )

[Newdoku](https://newdoku.com) ( <https://newdoku.com> )

[Sudoku Puzzle](https://www.sudokupuzzle.org) ( <https://www.sudokupuzzle.org> )

## Classic Sudoku

Place a digit from 1 to 9 into each of the empty squares so that each digit appears exactly once in each of the rows, columns and the nine outlined 3x3 regions.



(Solution)

		1	2				7	
		9	1	5				
2					6		5	
						8	4	
6				8				1
	4	7						
	1		5					8
				2	1	4		
	5				7	9		

© sudoku.today

[Sudoku Today](https://sudoku.today) ( <https://sudoku.today> )

[Samurai Sudoku](https://samuraisudoku.com) ( <https://samuraisudoku.com> )

[Newdoku](https://newdoku.com) ( <https://newdoku.com> )

[Sudoku Puzzle](https://www.sudokupuzzle.org) ( <https://www.sudokupuzzle.org> )

## Classic Sudoku

Place a digit from 1 to 9 into each of the empty squares so that each digit appears exactly once in each of the rows, columns and the nine outlined 3x3 regions.



(Solution)

		3						8
			6			2		4
	6	4		8	2			
1				4		3		7
	4						1	
6		7		5				9
			5	9		4	2	
3		8			6			
4						7		

© sudoku.today

[Sudoku Today](https://sudoku.today) ( <https://sudoku.today> )

[Samurai Sudoku](https://samuraisudoku.com) ( <https://samuraisudoku.com> )

[Newdoku](https://newdoku.com) ( <https://newdoku.com> )

[Sudoku Puzzle](https://www.sudokupuzzle.org) ( <https://www.sudokupuzzle.org> )

## Classic Sudoku

Place a digit from 1 to 9 into each of the empty squares so that each digit appears exactly once in each of the rows, columns and the nine outlined 3x3 regions.



(Solution)

	2			3	5			9
		8						5
	4	3			1			
					9		7	8
				6				
7	3		1					
			2			8	6	
6						4		
4			3	8			1	

© sudoku.today

[Sudoku Today](https://sudoku.today) ( <https://sudoku.today> )

[Samurai Sudoku](https://samuraisudoku.com) ( <https://samuraisudoku.com> )

[Newdoku](https://newdoku.com) ( <https://newdoku.com> )

[Sudoku Puzzle](https://www.sudokupuzzle.org) ( <https://www.sudokupuzzle.org> )

## Classic Sudoku

Place a digit from 1 to 9 into each of the empty squares so that each digit appears exactly once in each of the rows, columns and the nine outlined 3x3 regions.



(Solution)

1				5			8	
		4						
8			3		1	9	4	
					8	2		
6								5
		2	9					
	1	9	7		6			4
						8		
	7			4				6

© sudoku.today

[Sudoku Today](https://sudoku.today) ( <https://sudoku.today> )

[Samurai Sudoku](https://samuraisudoku.com) ( <https://samuraisudoku.com> )

[Newdoku](https://newdoku.com) ( <https://newdoku.com> )

[Sudoku Puzzle](https://www.sudokupuzzle.org) ( <https://www.sudokupuzzle.org> )

## Classic Sudoku

Place a digit from 1 to 9 into each of the empty squares so that each digit appears exactly once in each of the rows, columns and the nine outlined 3x3 regions.



(Solution)

6			8	5				
	7			1			9	
2						7	8	
		5					1	4
				6				
1	2					5		
	1	3						7
	5			3			2	
				9	8			3

© sudoku.today

[Sudoku Today](https://sudoku.today) ( <https://sudoku.today> )

[Samurai Sudoku](https://samuraisudoku.com) ( <https://samuraisudoku.com> )

[Newdoku](https://newdoku.com) ( <https://newdoku.com> )

[Sudoku Puzzle](https://www.sudokupuzzle.org) ( <https://www.sudokupuzzle.org> )

## Classic Sudoku

Place a digit from 1 to 9 into each of the empty squares so that each digit appears exactly once in each of the rows, columns and the nine outlined 3x3 regions.



(Solution)

	9		5			7		
		7					6	2
	5			3				9
			6					
		3	4	9	2	8		
					1			
3				8			5	
4	7					2		
		1			6		9	

© sudoku.today

[Sudoku Today](https://sudoku.today) ( <https://sudoku.today> )

[Samurai Sudoku](https://samuraisudoku.com) ( <https://samuraisudoku.com> )

[Newdoku](https://newdoku.com) ( <https://newdoku.com> )

[Sudoku Puzzle](https://www.sudokupuzzle.org) ( <https://www.sudokupuzzle.org> )