

## Edge Difference Sudoku

Place a digit from 1 to 9 into each of the empty squares so that each digit appears exactly once in each of the rows, columns and the nine outlined 3x3 regions.

A number at the edge of the diagram indicates the difference between the first and the last number in the corresponding row or column.



(Solution)

|   |   |   |   |   |   |   |   |   |   |
|---|---|---|---|---|---|---|---|---|---|
|   | 3 | 1 | 2 | 2 | 6 | 7 | 8 | 7 | 2 |
| 4 |   |   |   |   |   |   |   |   | 3 |
| 8 |   |   |   |   |   |   |   |   |   |
| 3 |   |   | 4 |   | 7 |   |   |   |   |
| 1 |   |   |   | 8 |   | 4 |   |   |   |
| 7 |   |   |   |   |   |   |   |   |   |
| 2 | 6 |   |   |   |   | 5 |   |   |   |
| 1 |   |   |   |   |   |   |   |   |   |
| 3 |   |   |   |   | 3 |   | 4 |   |   |
| 1 |   |   |   |   |   |   |   |   |   |

© sudoku.today

[Sudoku Today](https://sudoku.today) ( <https://sudoku.today> )

[Samurai Sudoku](https://samuraisudoku.com) ( <https://samuraisudoku.com> )

[Newdoku](https://newdoku.com) ( <https://newdoku.com> )

[Sudoku Puzzle](https://www.sudokupuzzle.org) ( <https://www.sudokupuzzle.org> )

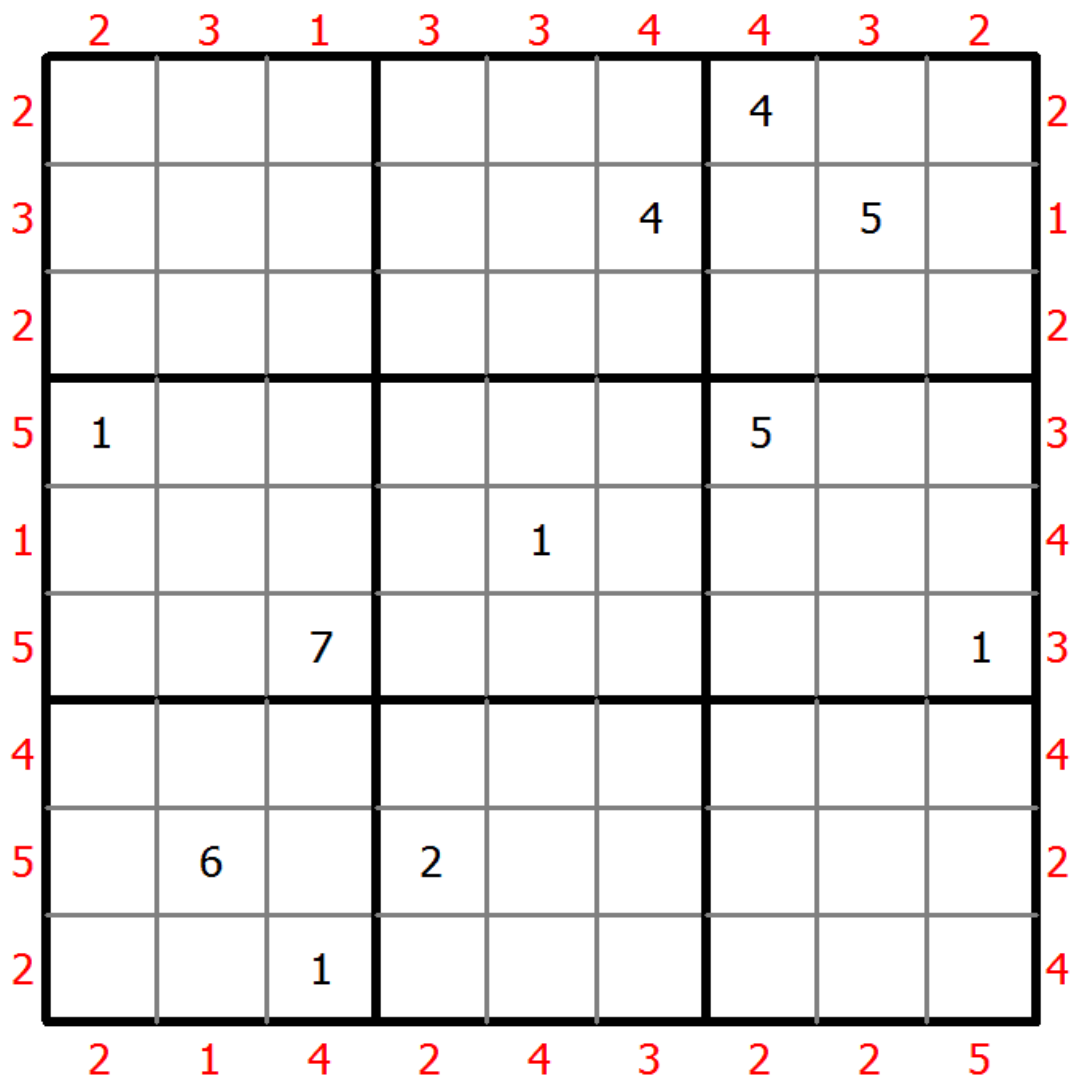
# Skyscrapers Sudoku

Place a digit from 1 to 9 into each of the empty squares so that each digit appears exactly once in each of the rows, columns and the nine outlined 3x3 regions.

Consider each number to be the height of a building. The numbers outside the grid indicate how many buildings can be seen when looking in that direction (taller buildings conceal smaller buildings behind them).



(Solution)



© sudoku.today

[Sudoku Today](https://sudoku.today) ( <https://sudoku.today> )

[Samurai Sudoku](https://samuraisudoku.com) ( <https://samuraisudoku.com> )

[Newdoku](https://newdoku.com) ( <https://newdoku.com> )

[Sudoku Puzzle](https://www.sudokupuzzle.org) ( <https://www.sudokupuzzle.org> )

# Search 9 Sudoku

Place a digit from 1 to 9 into each of the empty squares so that each digit appears exactly once in each of the rows, columns and the nine outlined 3x3 regions.

The number in a cell with an arrow indicates the distance to the cell with the number 9 in the direction the arrow points to.



(Solution)

|   |   |   |   |   |   |   |   |   |
|---|---|---|---|---|---|---|---|---|
| ↓ | ↓ | ↓ | 5 | ↓ |   | ↓ | ↓ | ↓ |
|   |   |   |   |   |   |   |   |   |
| 1 |   | 7 |   |   |   |   |   |   |
| → |   |   |   | 1 |   |   |   |   |
| → |   |   |   |   |   |   | 7 | ← |
| → |   |   |   |   |   |   |   | ← |
|   | 6 |   |   |   | 2 |   |   | ← |
|   |   |   | 1 | 4 |   |   |   |   |
| → | → | → |   |   | 6 | ↑ | ↑ | ↑ |

© sudoku.today

[Sudoku Today](https://sudoku.today) ( <https://sudoku.today> )

[Samurai Sudoku](https://samuraisudoku.com) ( <https://samuraisudoku.com> )

[Newdoku](https://newdoku.com) ( <https://newdoku.com> )

[Sudoku Puzzle](https://www.sudokupuzzle.org) ( <https://www.sudokupuzzle.org> )

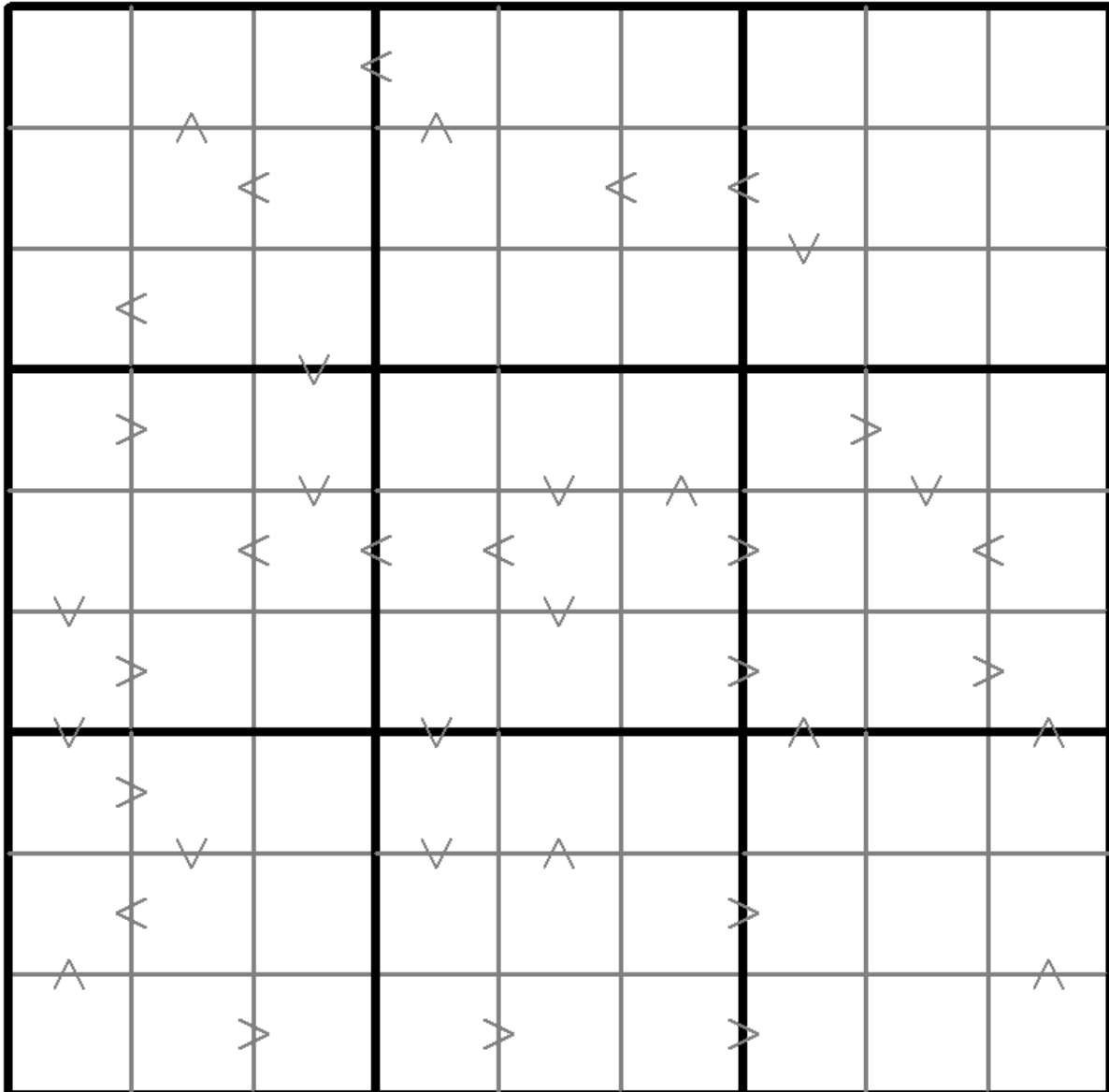
## Greater Than Kropki Sudoku

Place a digit from 1 to 9 into each of the empty squares so that each digit appears exactly once in each of the rows, columns and the nine outlined 3x3 regions.

In all cases where two digits have a consecutive value or one digit is two times as big as the other digit (or both), a greater than sign is placed. Digits have to be placed in accordance with the sign.



(Solution)



© sudoku.today

[Sudoku Today](https://sudoku.today) ( <https://sudoku.today> )  
[Samurai Sudoku](https://samuraisudoku.com) ( <https://samuraisudoku.com> )

[Newdoku](https://newdoku.com) ( <https://newdoku.com> )  
[Sudoku Puzzle](https://www.sudokupuzzle.org) ( <https://www.sudokupuzzle.org> )

## Multi Diagonal Sudoku

Place a digit from 1 to 9 into each of the empty squares so that each digit appears exactly once in each of the rows, columns and the nine outlined 3x3 regions.

Digits do not repeat along the marked diagonals.



(Solution)

|   |   |   |   |   |   |   |   |   |
|---|---|---|---|---|---|---|---|---|
|   | 1 |   | 9 |   |   |   | 3 |   |
| 2 |   |   |   | 3 |   |   |   |   |
| 3 |   | 6 |   | 2 |   | 1 |   |   |
|   |   |   |   | 8 | 3 |   |   | 4 |
|   |   |   |   | 5 |   |   |   |   |
| 4 |   |   | 6 | 9 |   |   |   |   |
|   |   | 9 |   | 7 |   | 4 |   | 6 |
|   |   |   |   | 6 |   |   |   | 9 |
|   | 6 |   |   |   | 9 |   | 8 |   |

© sudoku.today

[Sudoku Today](https://sudoku.today) ( <https://sudoku.today> )

[Samurai Sudoku](https://samuraisudoku.com) ( <https://samuraisudoku.com> )

[Newdoku](https://newdoku.com) ( <https://newdoku.com> )

[Sudoku Puzzle](https://www.sudokupuzzle.org) ( <https://www.sudokupuzzle.org> )

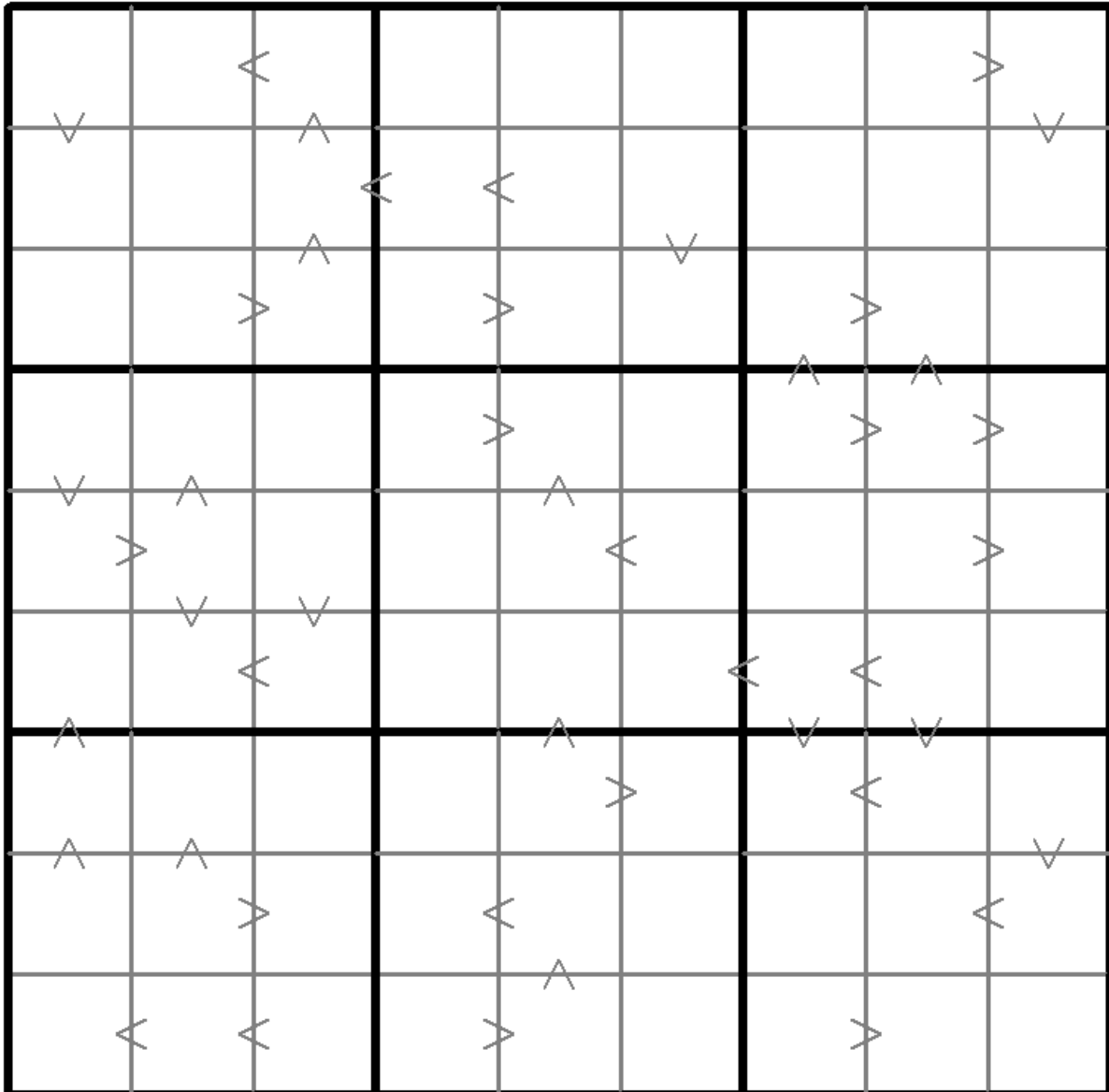
## Greater Than Kropki Sudoku

Place a digit from 1 to 9 into each of the empty squares so that each digit appears exactly once in each of the rows, columns and the nine outlined 3x3 regions.

In all cases where two digits have a consecutive value or one digit is two times as big as the other digit (or both), a greater than sign is placed. Digits have to be placed in accordance with the sign.



(Solution)



© sudoku.today

[Sudoku Today](https://sudoku.today) ( <https://sudoku.today> )  
[Samurai Sudoku](https://samuraisudoku.com) ( <https://samuraisudoku.com> )

[Newdoku](https://newdoku.com) ( <https://newdoku.com> )  
[Sudoku Puzzle](https://www.sudokupuzzle.org) ( <https://www.sudokupuzzle.org> )

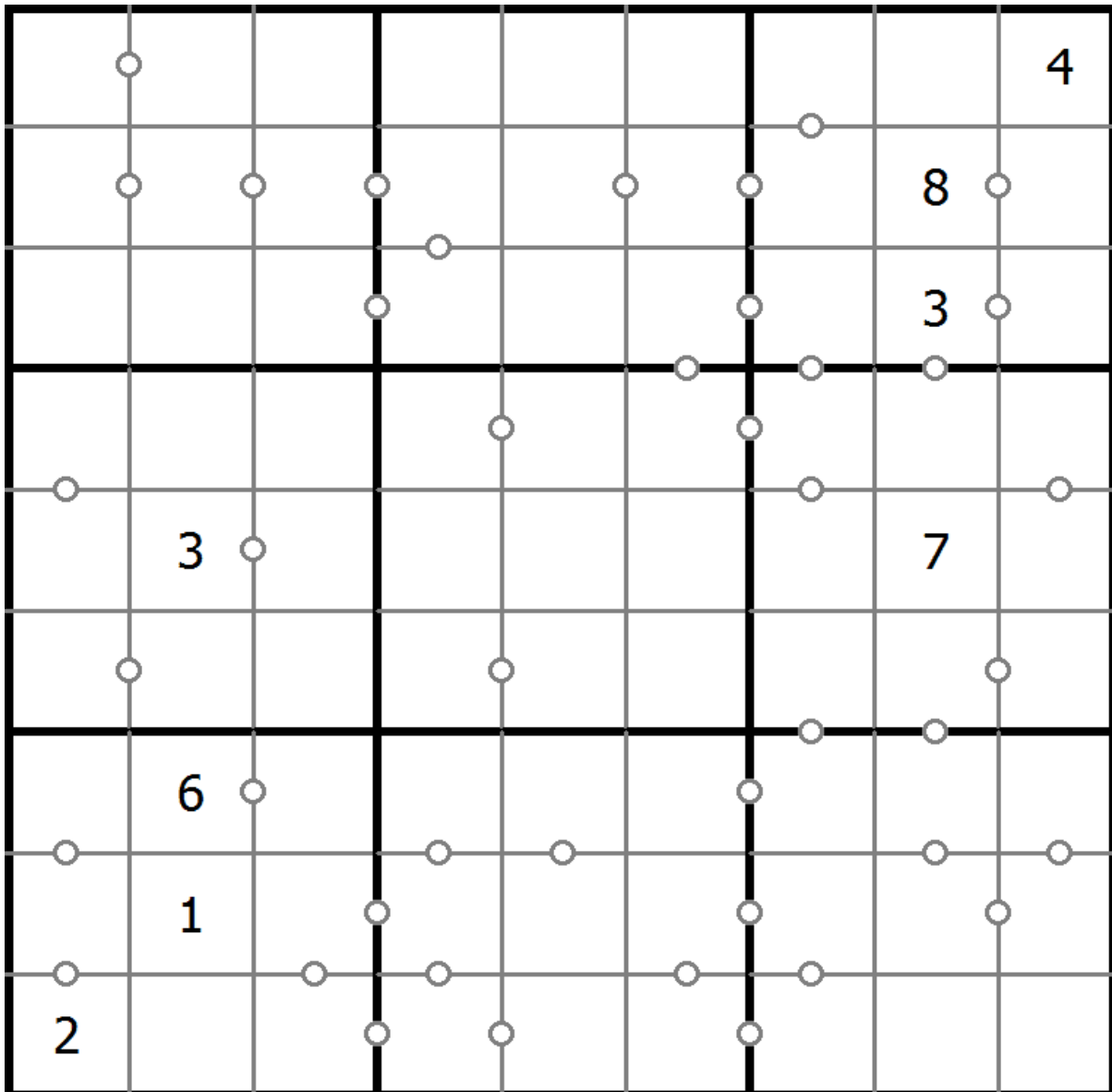
## Consecutive Sudoku

Place a digit from 1 to 9 into each of the empty squares so that each digit appears exactly once in each of the rows, columns and the nine outlined 3x3 regions.

There are some dots between cells. The numbers on each side of a dot must always be consecutive. All possible dots are marked.



(Solution)



© sudoku.today

[Sudoku Today](https://sudoku.today) ( <https://sudoku.today> )

[Samurai Sudoku](https://samuraisudoku.com) ( <https://samuraisudoku.com> )

[Newdoku](https://newdoku.com) ( <https://newdoku.com> )

[Sudoku Puzzle](https://www.sudokupuzzle.org) ( <https://www.sudokupuzzle.org> )

## Extra Regions Sudoku

Place a digit from 1 to 9 into each of the empty squares so that each digit appears exactly once in each of the rows, columns and the nine outlined 3x3 regions.

The connected shaded cells contain each digit from 1 to 9.



(Solution)

|   |   |   |   |  |   |   |   |   |
|---|---|---|---|--|---|---|---|---|
| 4 | 2 |   |   |  | 3 |   | 6 | 7 |
| 6 |   |   | 4 |  |   | 8 |   |   |
|   |   | 7 |   |  | 8 |   |   |   |
|   | 9 |   |   |  |   |   |   | 5 |
| 5 |   | 6 |   |  |   | 2 |   | 8 |
| 8 |   |   |   |  |   |   | 9 |   |
|   |   |   | 9 |  |   | 3 |   |   |
|   |   | 3 |   |  | 4 |   |   | 1 |
| 2 | 8 |   | 7 |  |   |   | 5 | 6 |

© sudoku.today

[Sudoku Today](https://sudoku.today) ( <https://sudoku.today> )

[Samurai Sudoku](https://samuraisudoku.com) ( <https://samuraisudoku.com> )

[Newdoku](https://newdoku.com) ( <https://newdoku.com> )

[Sudoku Puzzle](https://www.sudokupuzzle.org) ( <https://www.sudokupuzzle.org> )

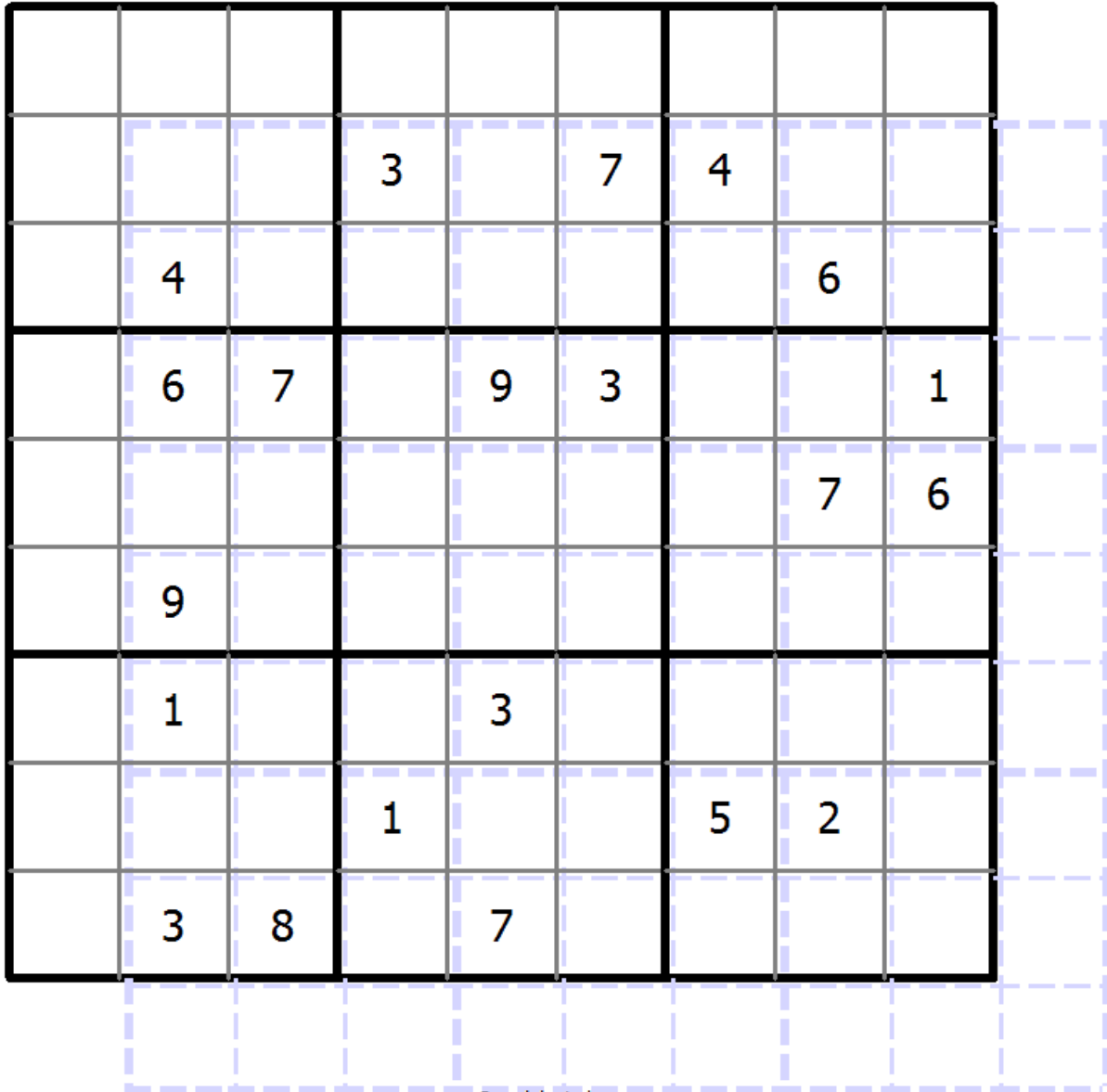


## Duodoku

Follow classic sudoku rules. This puzzle consists of two overlapping grids of classic sudoku.



(Solution)



© sudoku.today

[Sudoku Today](https://sudoku.today) ( <https://sudoku.today> )

[Samurai Sudoku](https://samuraisudoku.com) ( <https://samuraisudoku.com> )

[Newdoku](https://newdoku.com) ( <https://newdoku.com> )

[Sudoku Puzzle](https://www.sudokupuzzle.org) ( <https://www.sudokupuzzle.org> )

### Hybrid Sudoku ( Consecutive Pairs + Sum Frame )

Place a digit from 1 to 9 into each of the empty squares so that each digit appears exactly once in each of the rows, columns and the nine outlined 3x3 regions.

There are some dots between cells. The numbers on each side of a dot must always be consecutive. Not all possible dots are marked.

Digits outside the grid indicate the sum of the first 3 digits in the corresponding direction.



(Solution)

|    |    |    |  |    |    |    |  |    |    |       |
|----|----|----|--|----|----|----|--|----|----|-------|
|    | 20 | 14 |  | 15 | 14 | 16 |  | 17 | 11 |       |
| 20 |    | 1  |  |    | 7  |    |  |    |    |       |
|    |    |    |  |    |    |    |  |    |    | 12    |
| 8  |    |    |  | 2  |    |    |  | 6  |    | 22    |
|    |    |    |  |    |    |    |  |    |    |       |
|    |    | 2  |  |    |    | 6  |  |    |    |       |
|    |    |    |  |    |    |    |  |    |    | 17    |
|    |    |    |  |    | 6  |    |  | 9  |    |       |
|    |    |    |  |    |    |    |  |    |    |       |
|    |    |    |  |    |    |    |  |    |    | 16    |
|    |    |    |  |    |    |    |  |    |    | 14 15 |

© sudoku.today

[Sudoku Today](https://sudoku.today) ( <https://sudoku.today> )

[Samurai Sudoku](https://samuraisudoku.com) ( <https://samuraisudoku.com> )

[Newdoku](https://newdoku.com) ( <https://newdoku.com> )

[Sudoku Puzzle](https://www.sudokupuzzle.org) ( <https://www.sudokupuzzle.org> )

# Neighbourship Sudoku

Place a digit from 1 to 9 into each of the empty squares so that each digit appears exactly once in each of the rows, columns and the nine outlined 3x3 regions.

A number in a squared cell indicates how many different numbers the four diagonally adjacent cells contain. A number in a circled cell indicates how many different numbers the eight orthogonally and diagonally adjacent cells contain.



(Solution)

|   |   |   |   |   |   |   |   |   |
|---|---|---|---|---|---|---|---|---|
|   | 7 |   | ○ |   |   | 9 |   |   |
| ○ |   |   |   | 2 |   |   | □ |   |
| ○ |   |   | 5 | 8 |   |   |   | 6 |
|   |   |   |   |   | □ |   |   |   |
|   | □ | 7 |   |   |   |   |   |   |
| 3 |   |   | 2 |   |   |   |   |   |
| 7 |   |   | ○ |   |   |   |   | 8 |
|   |   | 4 |   |   |   | ○ |   |   |
| 2 |   | 8 |   | 9 |   | 3 | ○ |   |

© sudoku.today

[Sudoku Today](https://sudoku.today) ( <https://sudoku.today> )

[Samurai Sudoku](https://samuraisudoku.com) ( <https://samuraisudoku.com> )

[Newdoku](https://newdoku.com) ( <https://newdoku.com> )

[Sudoku Puzzle](https://www.sudokupuzzle.org) ( <https://www.sudokupuzzle.org> )

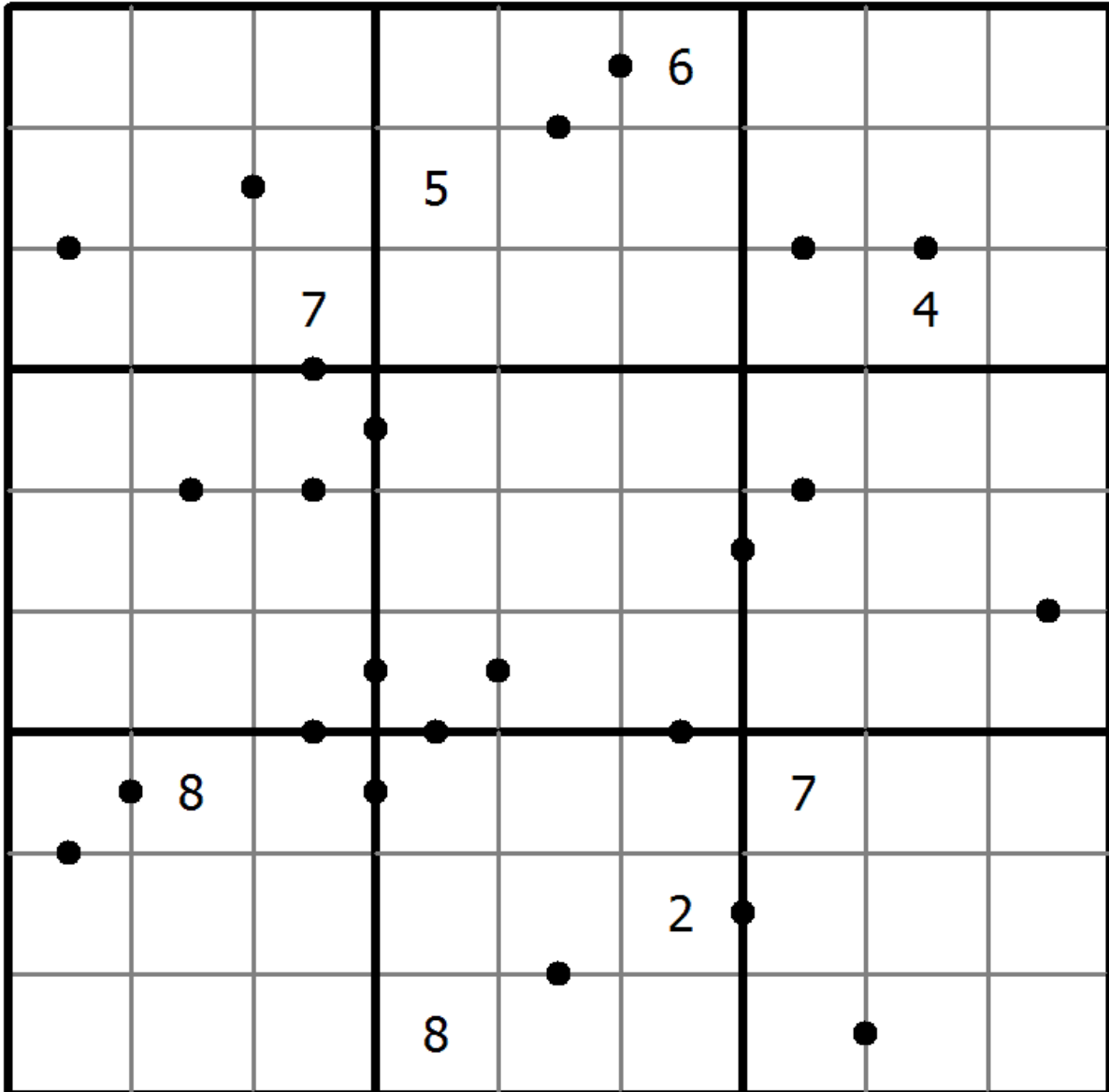
## Answer 8 sudoku

Place a digit from 1 to 9 into each of the empty squares so that each digit appears exactly once in each of the rows, columns and the nine outlined 3x3 regions.

A dot between two cells indicates that the result of at least one of the basic operations (addition, subtraction, multiplication, division) of the numbers in these two cells is 8. Is the dot missing, no one of the basic operations results in an 8.



(Solution)



© sudoku.today

[Sudoku Today](https://sudoku.today) ( <https://sudoku.today> )  
[Samurai Sudoku](https://samuraisudoku.com) ( <https://samuraisudoku.com> )

[Newdoku](https://newdoku.com) ( <https://newdoku.com> )  
[Sudoku Puzzle](https://www.sudokupuzzle.org) ( <https://www.sudokupuzzle.org> )

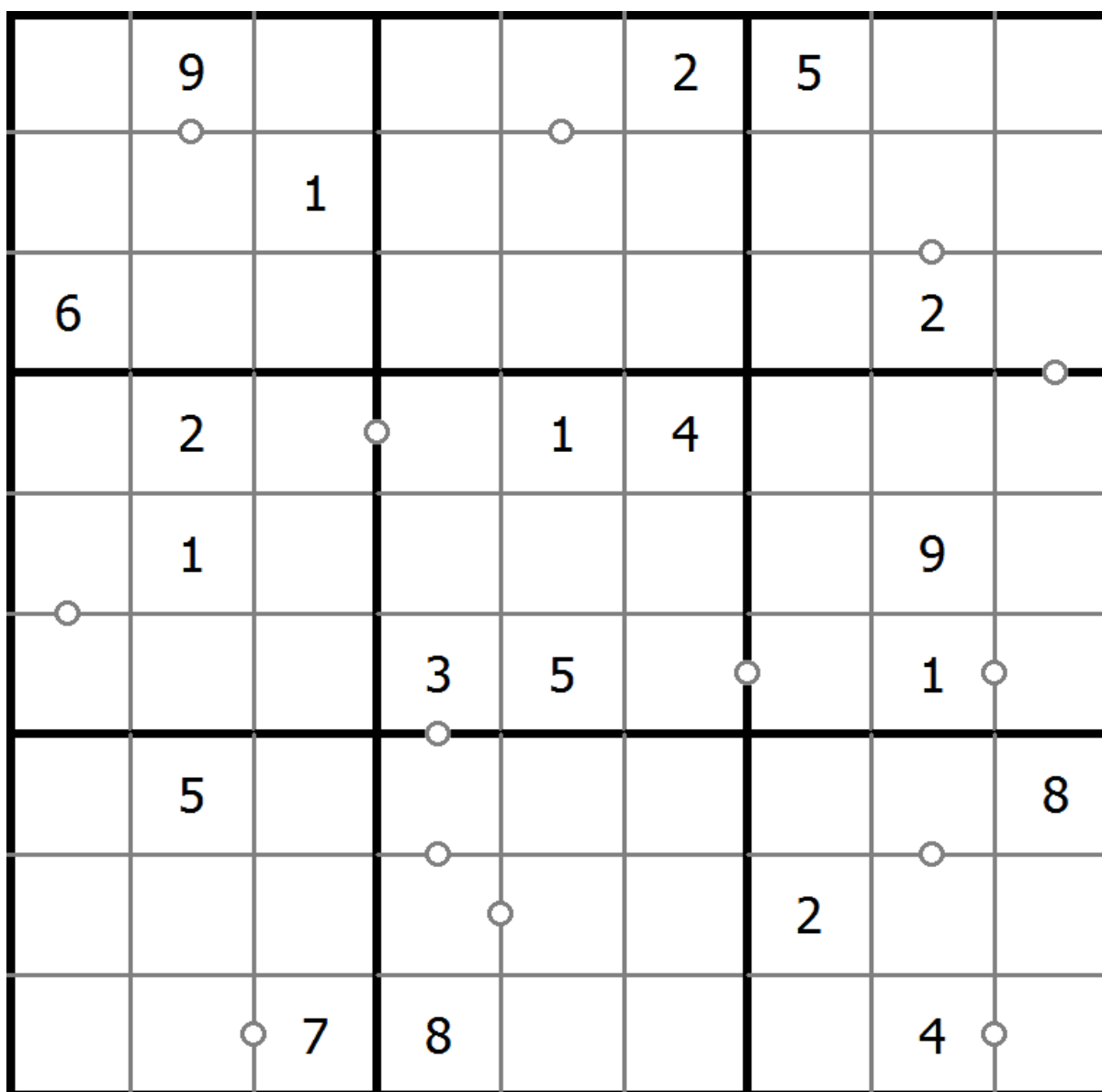
## Consecutive Sudoku

Place a digit from 1 to 9 into each of the empty squares so that each digit appears exactly once in each of the rows, columns and the nine outlined 3x3 regions.

There are some dots between cells. The numbers on each side of a dot must always be consecutive. Not all possible dots are marked.



(Solution)



© sudoku.today

[Sudoku Today](https://sudoku.today) ( <https://sudoku.today> )

[Samurai Sudoku](https://samuraisudoku.com) ( <https://samuraisudoku.com> )

[Newdoku](https://newdoku.com) ( <https://newdoku.com> )

[Sudoku Puzzle](https://www.sudokupuzzle.org) ( <https://www.sudokupuzzle.org> )

### Hybrid Sudoku ( Greater Than + Sum Frame )

Place a digit from 1 to 9 into each of the empty squares so that each digit appears exactly once in each of the rows, columns and the nine outlined 3x3 regions.

Digits have to be place in accordance with the “greater than” signs.

Digits outside the grid indicate the sum of the first 3 digits in the corresponding direction.



(Solution)

|    |    |    |        |    |    |    |    |   |
|----|----|----|--------|----|----|----|----|---|
|    | 21 | 12 | 12     |    | 9  |    | 13 |   |
|    |    | 3  |        |    |    |    | >  |   |
| 16 |    |    | ^<br>5 |    |    |    |    | < |
|    |    |    |        | <  |    |    | >  |   |
|    |    |    |        |    |    |    |    |   |
|    | >  | 6  |        |    |    |    |    |   |
|    |    |    |        | 5  | 2  |    | ^  |   |
| 11 |    |    | v      |    |    |    | ^  |   |
|    |    |    |        |    |    |    | >  | 3 |
| 21 |    |    |        | <  |    |    | ^  |   |
|    |    |    |        |    |    |    | v  |   |
|    |    |    |        |    |    |    | 5  |   |
|    |    |    |        |    |    |    |    | 7 |
|    |    |    |        |    |    |    |    |   |
|    |    |    | 14     | 12 | 20 | 17 | 13 |   |

© sudoku.today

[Sudoku Today](https://sudoku.today) ( <https://sudoku.today> )

[Samurai Sudoku](https://samuraisudoku.com) ( <https://samuraisudoku.com> )

[Newdoku](https://newdoku.com) ( <https://newdoku.com> )

[Sudoku Puzzle](https://www.sudokupuzzle.org) ( <https://www.sudokupuzzle.org> )

# Rossini Sudoku

Place a digit from 1 to 9 into each of the empty squares so that each digit appears exactly once in each of the rows, columns and the nine outlined 3x3 regions.

The arrows outside the grid indicate that the nearest three digits in the corresponding direction are in ascending or descending order (the highest number is always in the direction of the arrow). All possible arrows are given, so if there is no arrow, the first three digits do not form an increasing sequence in either direction.



(Solution)

|   |   |   |   |   |  |   |  |   |   |
|---|---|---|---|---|--|---|--|---|---|
|   |   |   |   |   |  |   |  |   |   |
| 8 |   |   |   |   |  |   |  |   |   |
|   |   | 4 |   |   |  | 2 |  |   | → |
|   | 6 |   |   |   |  |   |  |   | → |
| 7 |   |   |   |   |  |   |  | 3 |   |
|   |   |   |   |   |  |   |  |   |   |
|   |   |   | 8 | 9 |  |   |  |   |   |
|   |   | 7 | 5 |   |  | 9 |  |   | ← |
|   | 1 |   |   |   |  |   |  | 6 |   |
|   | 8 |   |   |   |  |   |  |   | ← |

© sudoku.today

[Sudoku Today](https://sudoku.today) ( <https://sudoku.today> )  
[Samurai Sudoku](https://samuraisudoku.com) ( <https://samuraisudoku.com> )

[Newdoku](https://newdoku.com) ( <https://newdoku.com> )  
[Sudoku Puzzle](https://www.sudokupuzzle.org) ( <https://www.sudokupuzzle.org> )

## Clone Sudoku

Place a digit from 1 to 9 into each of the empty squares so that each digit appears exactly once in each of the rows, columns and the nine outlined 3x3 regions.

Grey cells in the grid represent many cloned areas. Digits in these areas on corresponding positions must be identical. Cloned areas are only moved, without rotation or reflection.



(Solution)

|   |   |   |   |   |   |   |   |   |
|---|---|---|---|---|---|---|---|---|
|   |   |   |   | 4 |   | 3 |   |   |
| 9 |   |   |   |   |   |   |   |   |
|   | 8 |   |   |   | 9 |   |   |   |
|   | 7 |   |   |   | 5 |   |   |   |
|   |   |   | 2 | 6 | 7 |   |   |   |
|   |   |   | 1 |   |   |   | 2 |   |
|   |   |   | 5 |   |   |   | 4 |   |
|   |   |   |   |   |   |   |   | 5 |
|   |   | 4 |   | 7 |   |   |   |   |

© sudoku.today

[Sudoku Today](https://sudoku.today) ( <https://sudoku.today> )

[Samurai Sudoku](https://samuraisudoku.com) ( <https://samuraisudoku.com> )

[Newdoku](https://newdoku.com) ( <https://newdoku.com> )

[Sudoku Puzzle](https://www.sudokupuzzle.org) ( <https://www.sudokupuzzle.org> )



## Even Sudoku

Place a digit from 1 to 9 into each of the empty squares so that each digit appears exactly once in each of the rows, columns and the nine outlined 3x3 regions.

Cells with shaded squares contain even digits.



(Solution)

|   |   |   |   |   |   |   |   |  |
|---|---|---|---|---|---|---|---|--|
|   |   |   |   |   |   | 6 |   |  |
| 1 | 3 |   | 8 |   |   |   |   |  |
|   |   | 9 |   |   |   |   | 8 |  |
|   |   |   | 7 | 2 | 4 |   |   |  |
|   |   |   | 1 |   |   | 7 |   |  |
|   |   |   |   | 6 |   | 4 | 9 |  |
|   |   | 4 |   | 1 |   |   |   |  |
| 7 |   |   |   |   | 6 |   |   |  |
|   | 2 |   | 3 |   |   | 5 |   |  |

© sudoku.today

[Sudoku Today](https://sudoku.today) ( <https://sudoku.today> )

[Samurai Sudoku](https://samuraisudoku.com) ( <https://samuraisudoku.com> )

[Newdoku](https://newdoku.com) ( <https://newdoku.com> )

[Sudoku Puzzle](https://www.sudokupuzzle.org) ( <https://www.sudokupuzzle.org> )

# Mathrax Sudoku

Place a digit from 1 to 9 into each of the empty squares so that each digit appears exactly once in each of the rows, columns and the nine outlined 3x3 regions.

Some intersections of the grid lines are marked by a number and an operator (+, -, x, /) in a circle. The number is the result of the operation, applied to both pairs of diagonally opposite cells. An E in the circle indicates that all four adjacent digits are even, while an O indicates that all four adjacent digits are odd.



(Solution)

|   |   |    |     |    |   |   |   |   |
|---|---|----|-----|----|---|---|---|---|
|   |   |    |     | 3  |   |   |   |   |
|   |   |    | 9+  |    |   |   |   |   |
| 2 |   | 2- |     |    | 6 |   | E |   |
|   | 3 |    |     |    |   |   | 5 |   |
|   |   |    |     | 2/ |   |   |   |   |
|   |   |    |     |    |   | 2 |   | 7 |
|   |   |    |     |    |   |   |   |   |
| 3 |   |    | 24x |    |   |   | O |   |
|   |   |    |     |    |   |   |   |   |
|   | 7 |    |     | 2  |   |   | 9 | 8 |

© sudoku.today

[Sudoku Today](https://sudoku.today) ( https://sudoku.today )  
[Samurai Sudoku](https://samuraisudoku.com) ( https://samuraisudoku.com )

[Newdoku](https://newdoku.com) ( https://newdoku.com )  
[Sudoku Puzzle](https://www.sudokupuzzle.org) ( https://www.sudokupuzzle.org )

# Perfect Squares

Place a digit from 1 to 9 into each of the empty squares so that each digit appears exactly once in each of the rows, columns and the nine outlined 3x3 regions.

A dot between two cells indicates that the digits in the two cells form a double digit square number in the reading direction. there are no square numbers marked by a dot.



(Solution)

|   |   |   |   |   |   |   |   |   |
|---|---|---|---|---|---|---|---|---|
|   |   |   |   | 7 |   |   |   |   |
|   |   | • |   | 3 | • | • | • |   |
|   |   | • |   |   |   |   |   | 5 |
|   |   |   | • |   |   |   |   |   |
|   |   | • |   |   | 6 |   | 5 |   |
|   |   |   |   |   |   | • |   |   |
|   |   | 3 |   |   |   | 1 |   |   |
|   | • |   |   |   |   | • |   |   |
|   | 1 |   | 7 |   |   | • | • | • |
|   |   |   |   |   |   |   |   |   |
|   |   |   |   |   |   |   | • |   |
| 3 |   |   |   |   | 8 |   |   | • |
|   |   |   |   | 3 |   |   |   |   |

© sudoku.today

[Sudoku Today](https://sudoku.today) ( <https://sudoku.today> )  
[Samurai Sudoku](https://samuraisudoku.com) ( <https://samuraisudoku.com> )

[Newdoku](https://newdoku.com) ( <https://newdoku.com> )  
[Sudoku Puzzle](https://www.sudokupuzzle.org) ( <https://www.sudokupuzzle.org> )

## Color Sudoku

Place a digit from 1 to 9 into each of the empty squares so that each digit appears exactly once in each of the rows, columns and the nine outlined 3x3 regions.

Apply Classic Sudoku rules. Within each coloured region each digit must appear exactly once.



(Solution)

|   |   |  |   |   |   |  |   |   |
|---|---|--|---|---|---|--|---|---|
| 4 |   |  |   |   | 2 |  |   |   |
|   |   |  |   | 5 | 3 |  |   | 1 |
|   | 7 |  |   | 8 |   |  |   |   |
|   |   |  |   |   |   |  | 6 | 3 |
|   | 6 |  |   |   |   |  | 1 |   |
| 5 | 9 |  |   |   |   |  |   |   |
|   |   |  |   | 1 |   |  | 8 |   |
| 6 |   |  | 9 | 4 |   |  |   |   |
|   |   |  | 2 |   |   |  |   | 5 |

© sudoku.today

[Sudoku Today](https://sudoku.today) ( <https://sudoku.today> )

[Samurai Sudoku](https://samuraisudoku.com) ( <https://samuraisudoku.com> )

[Newdoku](https://newdoku.com) ( <https://newdoku.com> )

[Sudoku Puzzle](https://www.sudokupuzzle.org) ( <https://www.sudokupuzzle.org> )

## Classic Sudoku

Place a digit from 1 to 9 into each of the empty squares so that each digit appears exactly once in each of the rows, columns and the nine outlined 3x3 regions.



(Solution)

|   |   |   |   |  |   |   |   |   |
|---|---|---|---|--|---|---|---|---|
|   |   | 6 | 9 |  |   |   |   |   |
|   |   | 5 |   |  | 8 |   |   |   |
|   |   |   |   |  | 6 | 2 | 3 | 4 |
| 9 |   |   | 4 |  |   |   |   | 6 |
|   |   | 4 |   |  |   | 8 |   |   |
| 1 |   |   |   |  | 5 |   |   | 7 |
| 3 | 9 | 2 | 6 |  |   |   |   |   |
|   |   |   | 8 |  |   | 5 |   |   |
|   |   |   |   |  | 7 | 3 |   |   |

© sudoku.today

[Sudoku Today](https://sudoku.today) ( <https://sudoku.today> )

[Samurai Sudoku](https://samuraisudoku.com) ( <https://samuraisudoku.com> )

[Newdoku](https://newdoku.com) ( <https://newdoku.com> )

[Sudoku Puzzle](https://www.sudokupuzzle.org) ( <https://www.sudokupuzzle.org> )

## Classic Sudoku

Place a digit from 1 to 9 into each of the empty squares so that each digit appears exactly once in each of the rows, columns and the nine outlined 3x3 regions.



(Solution)

|   |  |   |   |   |   |   |  |   |
|---|--|---|---|---|---|---|--|---|
|   |  |   |   |   |   |   |  | 7 |
| 8 |  | 6 |   |   | 4 | 3 |  |   |
|   |  |   | 1 | 2 | 7 | 5 |  |   |
| 7 |  | 1 |   |   |   |   |  | 3 |
|   |  |   |   | 5 |   |   |  |   |
| 3 |  |   |   |   |   | 7 |  | 8 |
|   |  | 3 | 4 | 7 | 8 |   |  |   |
|   |  | 8 | 3 |   |   | 9 |  | 1 |
| 6 |  |   |   |   |   |   |  |   |

© sudoku.today

[Sudoku Today](https://sudoku.today) ( <https://sudoku.today> )

[Samurai Sudoku](https://samuraisudoku.com) ( <https://samuraisudoku.com> )

[Newdoku](https://newdoku.com) ( <https://newdoku.com> )

[Sudoku Puzzle](https://www.sudokupuzzle.org) ( <https://www.sudokupuzzle.org> )

## Classic Sudoku

Place a digit from 1 to 9 into each of the empty squares so that each digit appears exactly once in each of the rows, columns and the nine outlined 3x3 regions.



(Solution)

|   |   |   |   |   |   |   |   |   |
|---|---|---|---|---|---|---|---|---|
| 6 |   |   | 2 |   |   |   | 5 |   |
|   |   |   |   | 7 |   | 1 | 4 |   |
|   |   | 7 |   |   |   |   |   |   |
|   |   | 6 |   | 2 |   |   | 1 |   |
| 3 | 1 |   |   | 9 |   |   | 2 | 8 |
|   | 2 |   |   | 8 |   | 5 |   |   |
|   |   |   |   |   |   | 7 |   |   |
|   | 8 | 9 |   | 1 |   |   |   |   |
|   | 4 |   |   |   | 3 |   |   | 1 |

© sudoku.today

[Sudoku Today](https://sudoku.today) ( <https://sudoku.today> )

[Samurai Sudoku](https://samuraisudoku.com) ( <https://samuraisudoku.com> )

[Newdoku](https://newdoku.com) ( <https://newdoku.com> )

[Sudoku Puzzle](https://www.sudokupuzzle.org) ( <https://www.sudokupuzzle.org> )

## Classic Sudoku

Place a digit from 1 to 9 into each of the empty squares so that each digit appears exactly once in each of the rows, columns and the nine outlined 3x3 regions.



(Solution)

|   |   |   |   |   |   |   |   |   |
|---|---|---|---|---|---|---|---|---|
| 8 |   |   | 3 |   | 5 |   | 4 |   |
|   |   |   | 9 | 6 |   | 5 |   |   |
|   | 6 | 7 |   |   |   |   |   |   |
| 1 |   | 4 |   |   | 7 |   |   |   |
|   |   |   |   | 5 |   |   |   |   |
|   |   |   | 4 |   |   | 9 |   | 1 |
|   |   |   |   |   |   | 2 | 9 |   |
|   |   | 3 |   | 2 | 8 |   |   |   |
|   | 1 |   | 6 |   | 9 |   |   | 4 |

© sudoku.today

[Sudoku Today](https://sudoku.today) ( <https://sudoku.today> )

[Samurai Sudoku](https://samuraisudoku.com) ( <https://samuraisudoku.com> )

[Newdoku](https://newdoku.com) ( <https://newdoku.com> )

[Sudoku Puzzle](https://www.sudokupuzzle.org) ( <https://www.sudokupuzzle.org> )



## Classic Sudoku

Place a digit from 1 to 9 into each of the empty squares so that each digit appears exactly once in each of the rows, columns and the nine outlined 3x3 regions.



(Solution)

|   |   |   |   |   |   |   |   |   |
|---|---|---|---|---|---|---|---|---|
|   | 6 |   |   |   |   |   |   | 3 |
| 1 | 3 |   | 2 |   |   |   |   | 7 |
|   |   |   |   | 7 | 8 | 5 |   |   |
|   |   |   |   |   |   |   | 4 | 2 |
|   | 8 |   |   | 4 |   |   | 3 |   |
| 7 | 2 |   |   |   |   |   |   |   |
|   |   | 8 | 5 | 3 |   |   |   |   |
| 3 |   |   |   |   | 9 |   | 5 | 4 |
| 6 |   |   |   |   |   |   | 8 |   |

© sudoku.today

[Sudoku Today](https://sudoku.today) ( <https://sudoku.today> )

[Samurai Sudoku](https://samuraisudoku.com) ( <https://samuraisudoku.com> )

[Newdoku](https://newdoku.com) ( <https://newdoku.com> )

[Sudoku Puzzle](https://www.sudokupuzzle.org) ( <https://www.sudokupuzzle.org> )

## Classic Sudoku

Place a digit from 1 to 9 into each of the empty squares so that each digit appears exactly once in each of the rows, columns and the nine outlined 3x3 regions.



(Solution)

|   |   |   |   |   |   |   |   |   |
|---|---|---|---|---|---|---|---|---|
| 9 | 8 |   | 4 |   |   | 7 | 2 |   |
|   |   |   |   |   |   |   |   | 8 |
| 3 |   | 2 |   |   |   |   |   |   |
|   |   |   |   |   | 9 | 6 | 7 |   |
|   |   | 3 |   | 2 |   | 9 |   |   |
|   | 4 | 9 | 8 |   |   |   |   |   |
|   |   |   |   |   |   | 2 |   | 5 |
| 8 |   |   |   |   |   |   |   |   |
|   | 5 | 7 |   |   | 6 |   | 1 | 9 |

© sudoku.today

[Sudoku Today](https://sudoku.today) ( <https://sudoku.today> )

[Samurai Sudoku](https://samuraisudoku.com) ( <https://samuraisudoku.com> )

[Newdoku](https://newdoku.com) ( <https://newdoku.com> )

[Sudoku Puzzle](https://www.sudokupuzzle.org) ( <https://www.sudokupuzzle.org> )

## Classic Sudoku

Place a digit from 1 to 9 into each of the empty squares so that each digit appears exactly once in each of the rows, columns and the nine outlined 3x3 regions.



(Solution)

|   |   |   |   |   |   |   |   |   |
|---|---|---|---|---|---|---|---|---|
|   |   | 8 |   | 1 |   |   | 5 |   |
| 4 |   |   |   | 6 |   |   |   | 1 |
|   |   |   | 5 |   |   |   |   |   |
| 3 |   | 5 | 8 |   |   | 2 |   |   |
|   | 6 |   |   |   |   |   | 9 |   |
|   |   | 9 |   |   | 5 | 7 |   | 3 |
|   |   |   |   |   | 1 |   |   |   |
| 6 |   |   |   | 5 |   |   |   | 4 |
|   | 3 |   |   | 2 |   | 1 |   |   |

© sudoku.today

[Sudoku Today](https://sudoku.today) ( <https://sudoku.today> )

[Samurai Sudoku](https://samuraisudoku.com) ( <https://samuraisudoku.com> )

[Newdoku](https://newdoku.com) ( <https://newdoku.com> )

[Sudoku Puzzle](https://www.sudokupuzzle.org) ( <https://www.sudokupuzzle.org> )

## Classic Sudoku

Place a digit from 1 to 9 into each of the empty squares so that each digit appears exactly once in each of the rows, columns and the nine outlined 3x3 regions.



(Solution)

|   |   |   |   |   |   |   |   |   |
|---|---|---|---|---|---|---|---|---|
| 9 | 3 |   |   |   | 4 |   |   |   |
|   |   |   |   | 8 |   |   |   | 6 |
|   |   |   | 5 |   |   |   |   | 9 |
|   |   | 2 |   | 5 | 6 | 9 |   |   |
|   | 7 |   |   |   |   |   | 8 |   |
|   |   | 9 | 1 | 3 |   | 6 |   |   |
| 6 |   |   |   |   | 1 |   |   |   |
| 1 |   |   |   | 4 |   |   |   |   |
|   |   |   | 9 |   |   |   | 2 | 8 |

© sudoku.today

[Sudoku Today](https://sudoku.today) ( <https://sudoku.today> )

[Samurai Sudoku](https://samuraisudoku.com) ( <https://samuraisudoku.com> )

[Newdoku](https://newdoku.com) ( <https://newdoku.com> )

[Sudoku Puzzle](https://www.sudokupuzzle.org) ( <https://www.sudokupuzzle.org> )

## Classic Sudoku

Place a digit from 1 to 9 into each of the empty squares so that each digit appears exactly once in each of the rows, columns and the nine outlined 3x3 regions.



(Solution)

|   |   |   |   |   |   |   |   |   |
|---|---|---|---|---|---|---|---|---|
|   |   |   | 9 |   |   | 1 | 4 |   |
| 1 |   |   |   |   |   |   |   |   |
| 8 |   | 3 | 6 |   |   |   |   |   |
|   | 6 |   | 4 |   | 5 |   |   | 3 |
| 4 |   |   |   | 6 |   |   |   | 7 |
| 7 |   |   | 2 |   | 1 |   | 8 |   |
|   |   |   |   |   | 4 | 8 |   | 6 |
|   |   |   |   |   |   |   |   | 5 |
|   | 5 | 2 |   |   | 8 |   |   |   |

© sudoku.today

[Sudoku Today](https://sudoku.today) ( <https://sudoku.today> )

[Samurai Sudoku](https://samuraisudoku.com) ( <https://samuraisudoku.com> )

[Newdoku](https://newdoku.com) ( <https://newdoku.com> )

[Sudoku Puzzle](https://www.sudokupuzzle.org) ( <https://www.sudokupuzzle.org> )

## Classic Sudoku

Place a digit from 1 to 9 into each of the empty squares so that each digit appears exactly once in each of the rows, columns and the nine outlined 3x3 regions.



(Solution)

|   |   |   |   |   |   |   |   |   |
|---|---|---|---|---|---|---|---|---|
|   |   | 2 |   | 5 |   |   |   | 6 |
| 5 | 7 |   |   |   | 2 | 9 |   |   |
|   | 9 |   |   |   | 4 |   |   |   |
|   |   | 9 | 7 |   |   |   |   |   |
| 4 |   |   |   |   |   |   |   | 1 |
|   |   |   |   |   | 1 | 5 |   |   |
|   |   |   | 9 |   |   |   | 3 |   |
|   |   | 8 | 1 |   |   |   | 6 | 4 |
| 3 |   |   |   | 4 |   | 1 |   |   |

© sudoku.today

[Sudoku Today](https://sudoku.today) ( <https://sudoku.today> )

[Samurai Sudoku](https://samuraisudoku.com) ( <https://samuraisudoku.com> )

[Newdoku](https://newdoku.com) ( <https://newdoku.com> )

[Sudoku Puzzle](https://www.sudokupuzzle.org) ( <https://www.sudokupuzzle.org> )

## Classic Sudoku

Place a digit from 1 to 9 into each of the empty squares so that each digit appears exactly once in each of the rows, columns and the nine outlined 3x3 regions.



(Solution)

|   |   |   |   |   |   |   |   |   |
|---|---|---|---|---|---|---|---|---|
|   |   | 4 |   | 8 | 5 |   |   |   |
|   |   |   | 1 |   |   |   | 3 |   |
|   | 5 |   | 4 |   |   |   |   | 2 |
|   |   | 1 |   |   | 7 |   |   | 8 |
|   |   | 3 |   |   |   | 5 |   |   |
| 6 |   |   | 8 |   |   | 1 |   |   |
| 4 |   |   |   |   | 2 |   | 7 |   |
|   | 2 |   |   |   | 9 |   |   |   |
|   |   |   | 7 | 3 |   | 9 |   |   |

© sudoku.today

[Sudoku Today](https://sudoku.today) ( <https://sudoku.today> )

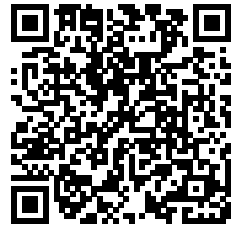
[Samurai Sudoku](https://samuraisudoku.com) ( <https://samuraisudoku.com> )

[Newdoku](https://newdoku.com) ( <https://newdoku.com> )

[Sudoku Puzzle](https://www.sudokupuzzle.org) ( <https://www.sudokupuzzle.org> )

## Classic Sudoku

Place a digit from 1 to 9 into each of the empty squares so that each digit appears exactly once in each of the rows, columns and the nine outlined 3x3 regions.



(Solution)

|   |   |   |   |   |   |   |   |   |
|---|---|---|---|---|---|---|---|---|
|   | 2 | 1 |   |   |   |   |   | 9 |
|   |   |   |   | 8 | 7 |   |   |   |
| 4 |   |   | 6 |   |   |   |   |   |
|   |   | 8 |   | 1 |   |   | 5 | 4 |
|   |   | 7 |   |   |   | 8 |   |   |
| 2 | 4 |   |   | 6 |   | 9 |   |   |
|   |   |   |   |   | 9 |   |   | 6 |
|   |   |   | 4 | 3 |   |   |   |   |
| 6 |   |   |   |   |   | 3 | 1 |   |

© sudoku.today

[Sudoku Today](https://sudoku.today) ( <https://sudoku.today> )

[Samurai Sudoku](https://samuraisudoku.com) ( <https://samuraisudoku.com> )

[Newdoku](https://newdoku.com) ( <https://newdoku.com> )

[Sudoku Puzzle](https://www.sudokupuzzle.org) ( <https://www.sudokupuzzle.org> )



## Classic Sudoku

Place a digit from 1 to 9 into each of the empty squares so that each digit appears exactly once in each of the rows, columns and the nine outlined 3x3 regions.



(Solution)

|   |   |   |   |   |   |   |   |   |
|---|---|---|---|---|---|---|---|---|
|   | 9 |   |   |   |   | 4 |   | 5 |
|   |   |   |   | 7 | 8 |   |   |   |
|   |   | 2 |   |   |   |   | 3 |   |
|   | 6 | 3 | 4 |   |   | 5 |   |   |
|   |   | 9 |   | 1 |   | 2 |   |   |
|   |   | 7 |   |   | 3 | 6 | 9 |   |
|   | 8 |   |   |   |   | 1 |   |   |
|   |   |   | 6 | 8 |   |   |   |   |
| 6 |   | 4 |   |   |   |   | 7 |   |

© sudoku.today

[Sudoku Today](https://sudoku.today) ( <https://sudoku.today> )

[Samurai Sudoku](https://samuraisudoku.com) ( <https://samuraisudoku.com> )

[Newdoku](https://newdoku.com) ( <https://newdoku.com> )

[Sudoku Puzzle](https://www.sudokupuzzle.org) ( <https://www.sudokupuzzle.org> )

## Classic Sudoku

Place a digit from 1 to 9 into each of the empty squares so that each digit appears exactly once in each of the rows, columns and the nine outlined 3x3 regions.



(Solution)

|   |   |   |   |   |   |   |   |   |
|---|---|---|---|---|---|---|---|---|
|   | 8 | 9 |   | 4 |   |   |   | 3 |
|   |   |   |   |   | 3 |   |   | 5 |
|   |   |   | 8 | 6 | 7 |   |   |   |
|   |   | 4 | 6 |   |   |   | 8 |   |
|   |   | 2 |   |   |   | 3 |   |   |
|   | 7 |   |   |   | 2 | 6 |   |   |
|   |   |   | 5 | 8 | 6 |   |   |   |
| 3 |   |   | 7 |   |   |   |   |   |
| 5 |   |   |   | 3 |   | 2 | 4 |   |

© sudoku.today

[Sudoku Today](https://sudoku.today) ( <https://sudoku.today> )

[Samurai Sudoku](https://samuraisudoku.com) ( <https://samuraisudoku.com> )

[Newdoku](https://newdoku.com) ( <https://newdoku.com> )

[Sudoku Puzzle](https://www.sudokupuzzle.org) ( <https://www.sudokupuzzle.org> )

## Classic Sudoku

Place a digit from 1 to 9 into each of the empty squares so that each digit appears exactly once in each of the rows, columns and the nine outlined 3x3 regions.



(Solution)

|   |   |   |   |   |   |   |   |   |
|---|---|---|---|---|---|---|---|---|
|   |   | 8 | 6 |   |   |   |   | 5 |
|   |   |   | 1 |   | 7 |   | 9 |   |
| 9 |   |   |   |   |   |   |   | 8 |
| 6 |   |   |   | 7 |   |   |   |   |
|   | 5 | 3 |   |   |   | 2 | 4 |   |
|   |   |   |   | 4 |   |   |   | 7 |
| 5 |   |   |   |   |   |   |   | 1 |
|   | 9 |   | 5 |   | 1 |   |   |   |
| 2 |   |   |   |   | 3 | 7 |   |   |

© sudoku.today

[Sudoku Today](https://sudoku.today) ( <https://sudoku.today> )

[Samurai Sudoku](https://samuraisudoku.com) ( <https://samuraisudoku.com> )

[Newdoku](https://newdoku.com) ( <https://newdoku.com> )

[Sudoku Puzzle](https://www.sudokupuzzle.org) ( <https://www.sudokupuzzle.org> )

## Classic Sudoku

Place a digit from 1 to 9 into each of the empty squares so that each digit appears exactly once in each of the rows, columns and the nine outlined 3x3 regions.



(Solution)

|   |   |   |   |  |   |   |   |   |
|---|---|---|---|--|---|---|---|---|
|   |   |   |   |  | 6 | 2 | 1 |   |
|   | 4 |   | 5 |  |   |   |   |   |
| 9 |   |   | 7 |  |   |   | 8 |   |
|   |   |   |   |  | 3 | 7 | 4 |   |
|   | 5 |   |   |  |   |   | 6 |   |
|   | 7 | 8 | 4 |  |   |   |   |   |
|   | 1 |   |   |  | 4 |   |   | 9 |
|   |   |   |   |  | 5 |   | 2 |   |
|   | 8 | 5 | 6 |  |   |   |   |   |

© sudoku.today

[Sudoku Today](https://sudoku.today) ( <https://sudoku.today> )

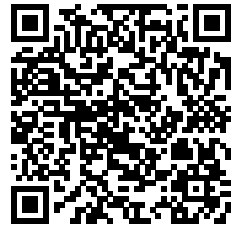
[Samurai Sudoku](https://samuraisudoku.com) ( <https://samuraisudoku.com> )

[Newdoku](https://newdoku.com) ( <https://newdoku.com> )

[Sudoku Puzzle](https://www.sudokupuzzle.org) ( <https://www.sudokupuzzle.org> )

## Classic Sudoku

Place a digit from 1 to 9 into each of the empty squares so that each digit appears exactly once in each of the rows, columns and the nine outlined 3x3 regions.



(Solution)

|   |   |   |   |   |   |   |   |   |
|---|---|---|---|---|---|---|---|---|
|   |   |   |   |   |   |   | 7 | 8 |
|   |   | 2 |   |   | 8 | 3 |   |   |
| 6 |   | 7 |   | 9 |   |   | 1 |   |
| 9 |   |   | 2 |   |   |   | 4 |   |
|   |   |   |   | 6 |   |   |   |   |
|   | 7 |   |   |   | 3 |   |   | 9 |
|   | 9 |   |   | 1 |   | 5 |   | 6 |
|   |   | 1 | 7 |   |   | 9 |   |   |
| 4 | 3 |   |   |   |   |   |   |   |

© sudoku.today

[Sudoku Today](https://sudoku.today) ( <https://sudoku.today> )

[Samurai Sudoku](https://samuraisudoku.com) ( <https://samuraisudoku.com> )

[Newdoku](https://newdoku.com) ( <https://newdoku.com> )

[Sudoku Puzzle](https://www.sudokupuzzle.org) ( <https://www.sudokupuzzle.org> )

## Classic Sudoku

Place a digit from 1 to 9 into each of the empty squares so that each digit appears exactly once in each of the rows, columns and the nine outlined 3x3 regions.



(Solution)

|   |   |   |   |   |   |   |   |   |
|---|---|---|---|---|---|---|---|---|
|   |   |   |   | 8 |   |   | 7 |   |
| 1 |   |   |   |   |   | 5 |   |   |
|   |   | 8 | 3 |   | 5 |   |   |   |
|   | 2 |   | 5 | 7 |   |   |   | 1 |
|   | 4 |   |   |   |   |   | 8 |   |
| 6 |   |   |   | 1 | 4 |   | 9 |   |
|   |   |   | 9 |   | 3 | 2 |   |   |
|   |   | 7 |   |   |   |   |   | 4 |
|   | 9 |   |   | 2 |   |   |   |   |

© sudoku.today

[Sudoku Today](https://sudoku.today) ( <https://sudoku.today> )

[Samurai Sudoku](https://samuraisudoku.com) ( <https://samuraisudoku.com> )

[Newdoku](https://newdoku.com) ( <https://newdoku.com> )

[Sudoku Puzzle](https://www.sudokupuzzle.org) ( <https://www.sudokupuzzle.org> )

## Classic Sudoku

Place a digit from 1 to 9 into each of the empty squares so that each digit appears exactly once in each of the rows, columns and the nine outlined 3x3 regions.



(Solution)

|   |   |   |   |   |   |   |   |   |
|---|---|---|---|---|---|---|---|---|
| 5 |   |   |   | 4 |   |   |   |   |
|   |   | 8 |   |   |   | 3 | 7 |   |
|   | 7 |   |   |   |   |   |   | 6 |
|   | 2 |   | 8 |   |   | 9 |   | 5 |
|   |   |   | 4 |   | 2 |   |   |   |
| 8 |   | 9 |   |   | 7 |   | 2 |   |
| 7 |   |   |   |   |   |   | 5 |   |
|   | 6 | 3 |   |   |   | 1 |   |   |
|   |   |   |   | 2 |   |   |   | 8 |

© sudoku.today

[Sudoku Today](https://sudoku.today) ( <https://sudoku.today> )

[Samurai Sudoku](https://samuraisudoku.com) ( <https://samuraisudoku.com> )

[Newdoku](https://newdoku.com) ( <https://newdoku.com> )

[Sudoku Puzzle](https://www.sudokupuzzle.org) ( <https://www.sudokupuzzle.org> )

## Classic Sudoku

Place a digit from 1 to 9 into each of the empty squares so that each digit appears exactly once in each of the rows, columns and the nine outlined 3x3 regions.



(Solution)

|   |   |   |   |   |   |   |   |   |
|---|---|---|---|---|---|---|---|---|
|   |   |   |   | 2 | 1 | 8 |   |   |
|   |   |   | 3 |   |   |   |   | 5 |
| 9 |   |   |   |   |   |   | 1 | 7 |
|   | 9 |   |   |   |   |   |   |   |
|   | 1 | 6 | 4 |   | 8 | 3 | 5 |   |
|   |   |   |   |   |   |   | 4 |   |
| 2 | 5 |   |   |   |   |   |   | 1 |
| 4 |   |   |   |   | 2 |   |   |   |
|   |   | 8 | 7 | 6 |   |   |   |   |

© sudoku.today

[Sudoku Today](https://sudoku.today) ( <https://sudoku.today> )

[Samurai Sudoku](https://samuraisudoku.com) ( <https://samuraisudoku.com> )

[Newdoku](https://newdoku.com) ( <https://newdoku.com> )

[Sudoku Puzzle](https://www.sudokupuzzle.org) ( <https://www.sudokupuzzle.org> )