

Staircase Sudoku

Place a digit from 1 to 9 into each of the empty squares so that each digit appears exactly once in each of the rows, columns and the nine outlined 3x3 regions.

Rows and columns span across the gaps in the diagram.



(Solution)

								4
7						8	6	
				4	8	3	7	
	9							5
	2			1	3			7
		8	7	9	4			6
		3				6	2	7
8						4	5	
		2						7
			6	7	2	3		
			8	2				4
			3					

© sudoku.today

[Sudoku Today](https://sudoku.today) (<https://sudoku.today>)

[Samurai Sudoku](https://samuraisudoku.com) (<https://samuraisudoku.com>)

[Newdoku](https://newdoku.com) (<https://newdoku.com>)

[Sudoku Puzzle](https://www.sudokupuzzle.org) (<https://www.sudokupuzzle.org>)

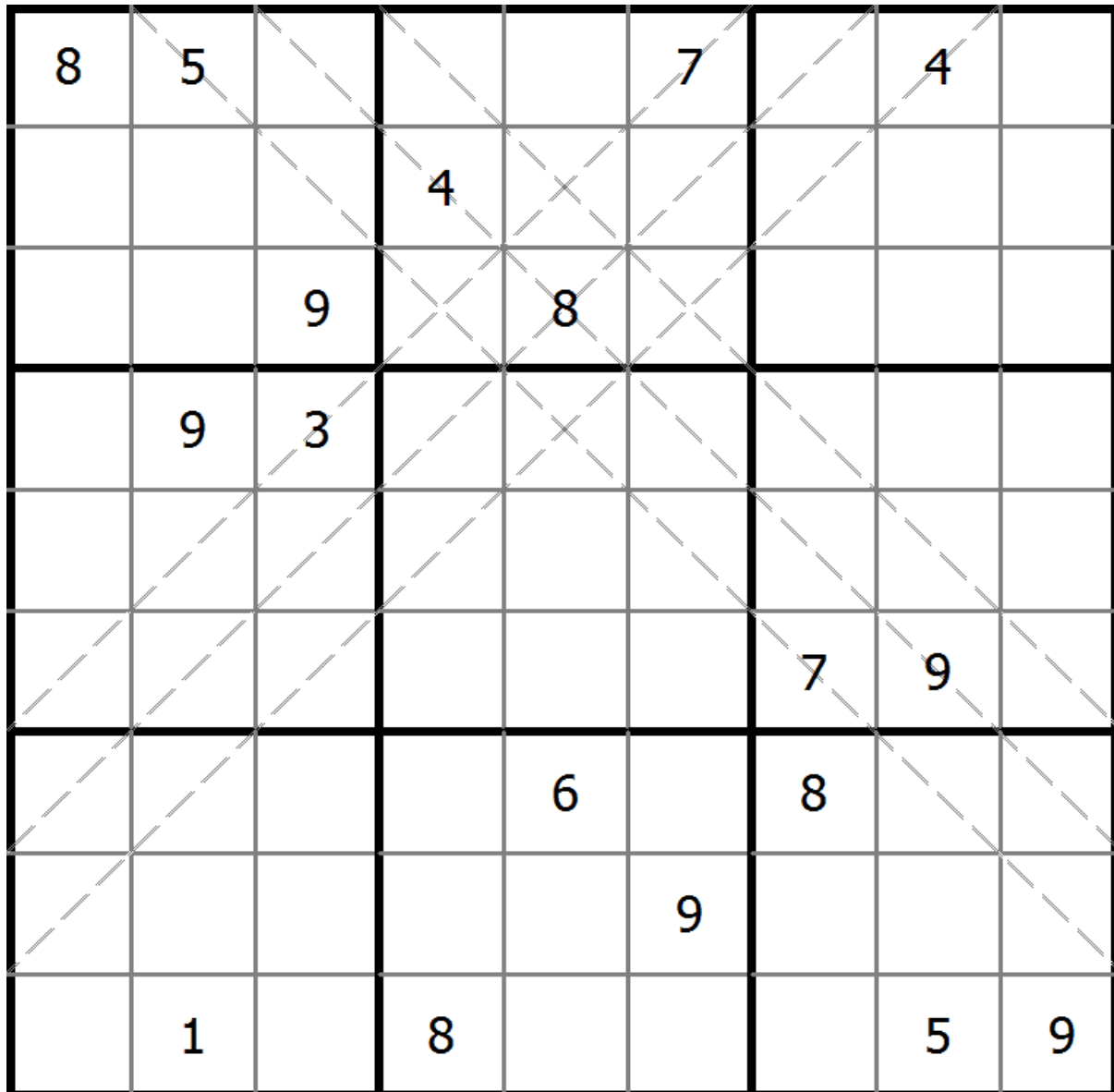
Multi Diagonal Sudoku

Place a digit from 1 to 9 into each of the empty squares so that each digit appears exactly once in each of the rows, columns and the nine outlined 3x3 regions.

Digits do not repeat along the marked diagonals.



(Solution)



© sudoku.today

[Sudoku Today](https://sudoku.today) (<https://sudoku.today>)

[Samurai Sudoku](https://samuraisudoku.com) (<https://samuraisudoku.com>)

[Newdoku](https://newdoku.com) (<https://newdoku.com>)

[Sudoku Puzzle](https://www.sudokupuzzle.org) (<https://www.sudokupuzzle.org>)

Mathrax Sudoku

Place a digit from 1 to 9 into each of the empty squares so that each digit appears exactly once in each of the rows, columns and the nine outlined 3x3 regions.

Some intersections of the grid lines are marked by a number and an operator (+, -, x, /) in a circle. The number is the result of the operation, applied to both pairs of diagonally opposite cells. An E in the circle indicates that all four adjacent digits are even, while an O indicates that all four adjacent digits are odd.



(Solution)

				7				
		9+					2/	
					8			9
			O					
	7				6			
			1				7	
	9							
						E		
				9				
		12x					1-	
1								
				1			6	

© sudoku.today

[Sudoku Today](https://sudoku.today) (<https://sudoku.today>)

[Samurai Sudoku](https://samuraisudoku.com) (<https://samuraisudoku.com>)

[Newdoku](https://newdoku.com) (<https://newdoku.com>)

[Sudoku Puzzle](https://www.sudokupuzzle.org) (<https://www.sudokupuzzle.org>)

Windoku

Place a digit from 1 to 9 into each of the empty squares so that each digit appears exactly once in each of the rows, columns and the nine outlined 3x3 regions.

Each of the four shaded 3x3 boxes contains each digit from 1 to 9.



(Solution)

		1			9	2		
						3		9
3		9						1
5	3			6				8
9				3				5
7				9			3	6
8						5		3
4		3						
		7	9			6		

© sudoku.today

[Sudoku Today](https://sudoku.today) (<https://sudoku.today>)

[Samurai Sudoku](https://samuraisudoku.com) (<https://samuraisudoku.com>)

[Newdoku](https://newdoku.com) (<https://newdoku.com>)

[Sudoku Puzzle](https://www.sudokupuzzle.org) (<https://www.sudokupuzzle.org>)

Thermo Sudoku

Place a digit from 1 to 9 into each of the empty squares so that each digit appears exactly once in each of the rows, columns and the nine outlined 3x3 regions.

Some thermometer shapes are placed in the grid. Digits are strictly increasing from the round bulb of the thermometer to each flat end.



(Solution)

9				5				
			6			5		
		3						
								9
7						3		
1								

© sudoku.today

[Sudoku Today](https://sudoku.today) (<https://sudoku.today>)

[Samurai Sudoku](https://samuraisudoku.com) (<https://samuraisudoku.com>)

[Newdoku](https://newdoku.com) (<https://newdoku.com>)

[Sudoku Puzzle](https://www.sudokupuzzle.org) (<https://www.sudokupuzzle.org>)

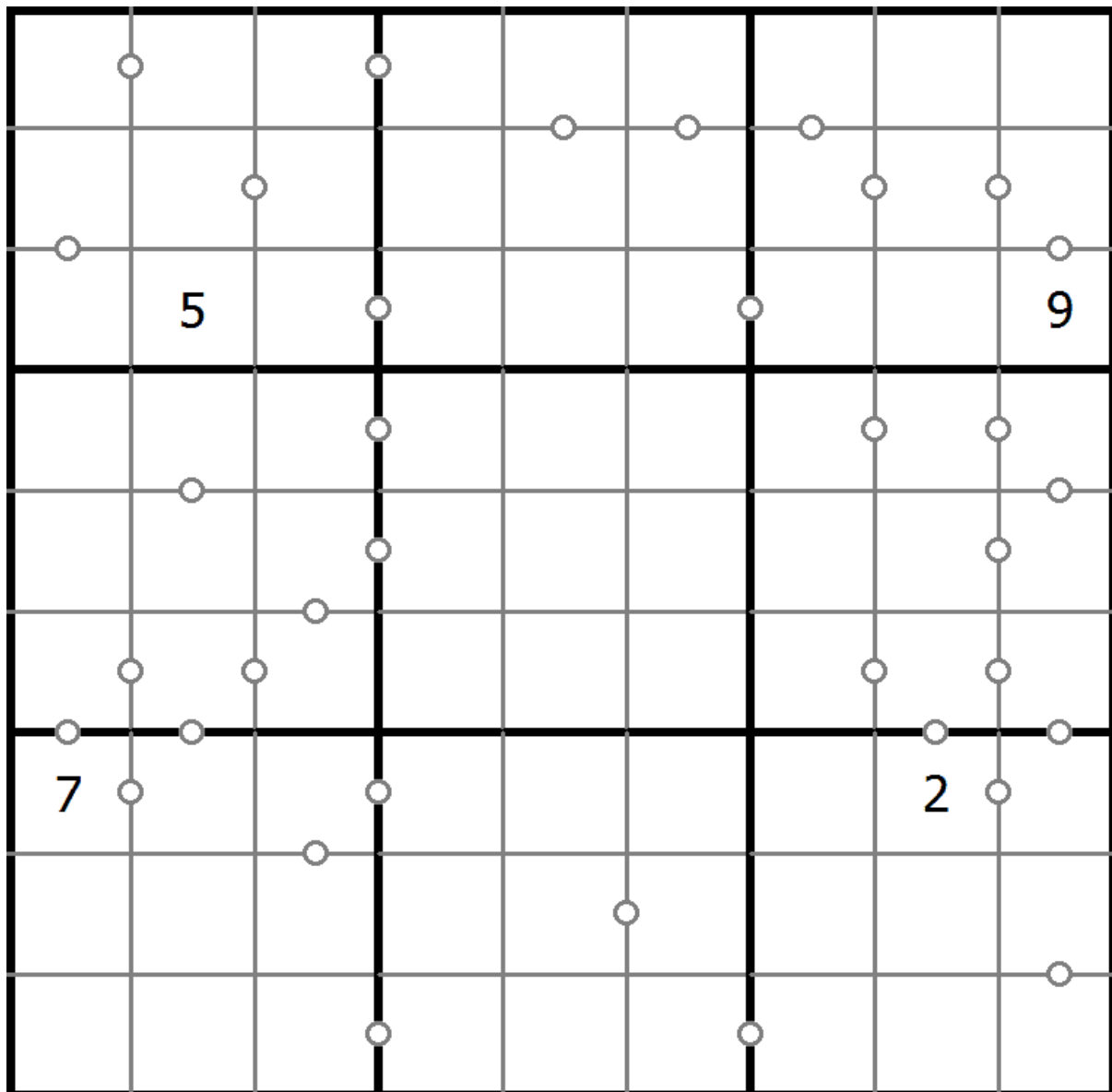
Consecutive Sudoku

Place a digit from 1 to 9 into each of the empty squares so that each digit appears exactly once in each of the rows, columns and the nine outlined 3x3 regions.

There are some dots between cells. The numbers on each side of a dot must always be consecutive. All possible dots are marked.



(Solution)



© sudoku.today

[Sudoku Today](https://sudoku.today) (<https://sudoku.today>)
[Samurai Sudoku](https://samuraisudoku.com) (<https://samuraisudoku.com>)

[Newdoku](https://newdoku.com) (<https://newdoku.com>)
[Sudoku Puzzle](https://www.sudokupuzzle.org) (<https://www.sudokupuzzle.org>)

Group Sum Sudoku

Place a digit from 1 to 9 into each of the empty squares so that each digit appears exactly once in each of the rows, columns and the nine outlined 3x3 regions.

Each number at the intersection of four cells is the sum of digits in those four cells.



(Solution)

			2					
		16					22	
	2							
	23							24
8			5					
			24			21		
1								
			4				5	
		6	9					
			24			20		
2							4	
	24							10
		24					22	
			1					

© sudoku.today

[Sudoku Today](https://sudoku.today) (<https://sudoku.today>)

[Samurai Sudoku](https://samuraisudoku.com) (<https://samuraisudoku.com>)

[Newdoku](https://newdoku.com) (<https://newdoku.com>)

[Sudoku Puzzle](https://www.sudokupuzzle.org) (<https://www.sudokupuzzle.org>)

Sum Frame Sudoku

Place a digit from 1 to 9 into each of the empty squares so that each digit appears exactly once in each of the rows, columns and the nine outlined 3x3 regions.

Digits outside the grid indicate the sum of the first 3 digits in the corresponding direction.



(Solution)

	1	2							
13									5
	9			4		1			
12						9			
14		7					1		
19			6						10
			1		9				3
18	3								10
15							4	9	
	15	12			17		19	10	

© sudoku.today

[Sudoku Today](https://sudoku.today) (<https://sudoku.today>)

[Samurai Sudoku](https://samuraisudoku.com) (<https://samuraisudoku.com>)

[Newdoku](https://newdoku.com) (<https://newdoku.com>)

[Sudoku Puzzle](https://www.sudokupuzzle.org) (<https://www.sudokupuzzle.org>)

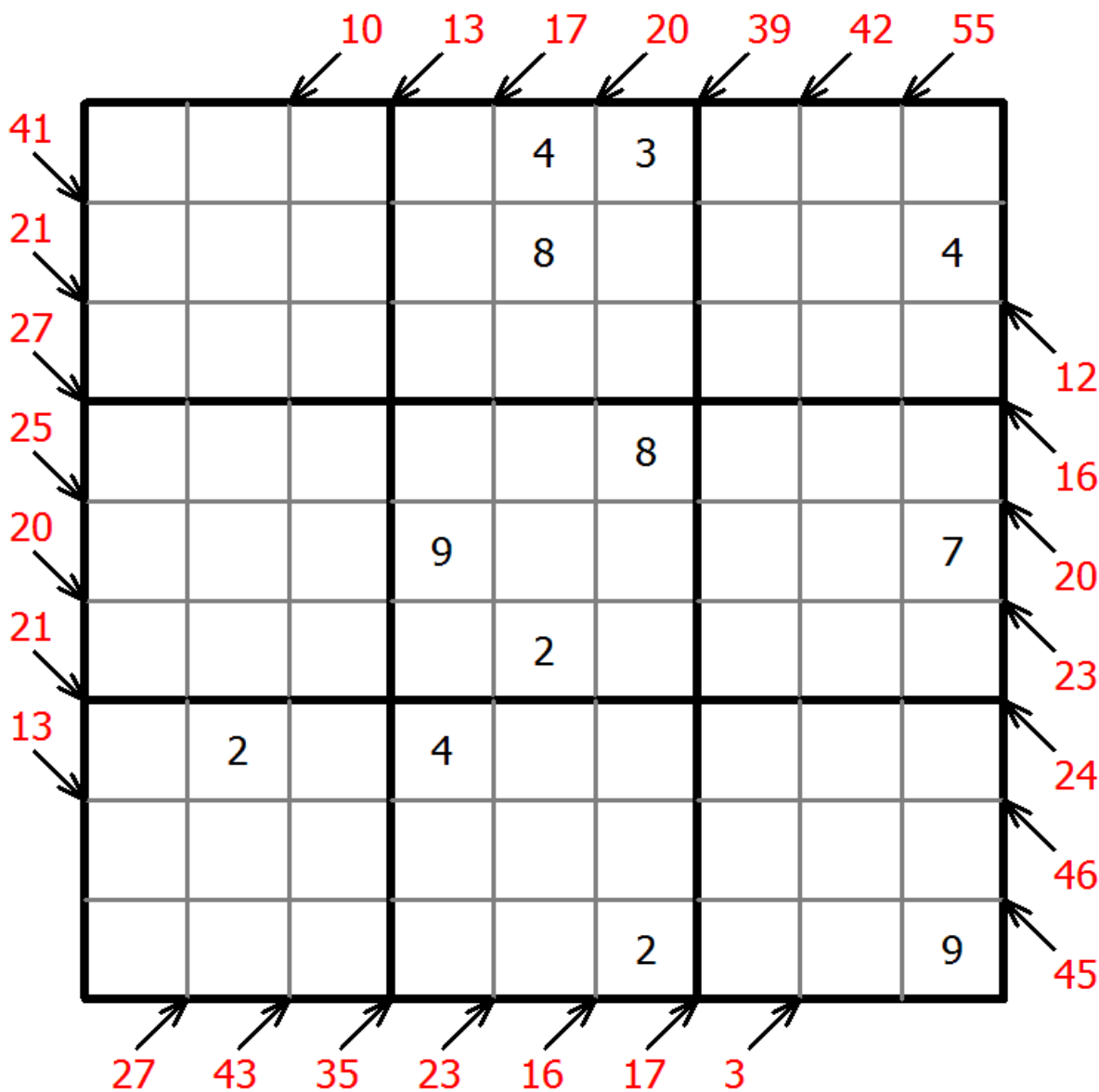
Little killer sudoku

Place a digit from 1 to 9 into each of the empty squares so that each digit appears exactly once in each of the rows, columns and the nine outlined 3x3 regions.

Numbers with arrows indicate sum of the numbers in each direction.



(Solution)



© sudoku.today

[Sudoku Today](https://sudoku.today) (<https://sudoku.today>)
[Samurai Sudoku](https://samuraisudoku.com) (<https://samuraisudoku.com>)

[Newdoku](https://newdoku.com) (<https://newdoku.com>)
[Sudoku Puzzle](https://www.sudokupuzzle.org) (<https://www.sudokupuzzle.org>)

Color Sudoku

Place a digit from 1 to 9 into each of the empty squares so that each digit appears exactly once in each of the rows, columns and the nine outlined 3x3 regions.

Apply Classic Sudoku rules. Within each coloured region each digit must appear exactly once.



(Solution)

					8			
				5	2			
	2		9			7	1	
		6					7	1
3								4
1	7					3		
	4	9			7		6	
			1	3				
			4					

© sudoku.today

[Sudoku Today](https://sudoku.today) (<https://sudoku.today>)

[Samurai Sudoku](https://samuraisudoku.com) (<https://samuraisudoku.com>)

[Newdoku](https://newdoku.com) (<https://newdoku.com>)

[Sudoku Puzzle](https://www.sudokupuzzle.org) (<https://www.sudokupuzzle.org>)

Multi Diagonal Sudoku

Place a digit from 1 to 9 into each of the empty squares so that each digit appears exactly once in each of the rows, columns and the nine outlined 3x3 regions.

Digits do not repeat along the marked diagonals.



(Solution)

				7		8	2	
8								6
	9		4				7	
				3			6	4
			2		6			
2	6			5				
	1				3		5	
4								8
	2	5		6				

© sudoku.today

[Sudoku Today](https://sudoku.today) (<https://sudoku.today>)

[Samurai Sudoku](https://samuraisudoku.com) (<https://samuraisudoku.com>)

[Newdoku](https://newdoku.com) (<https://newdoku.com>)

[Sudoku Puzzle](https://www.sudokupuzzle.org) (<https://www.sudokupuzzle.org>)

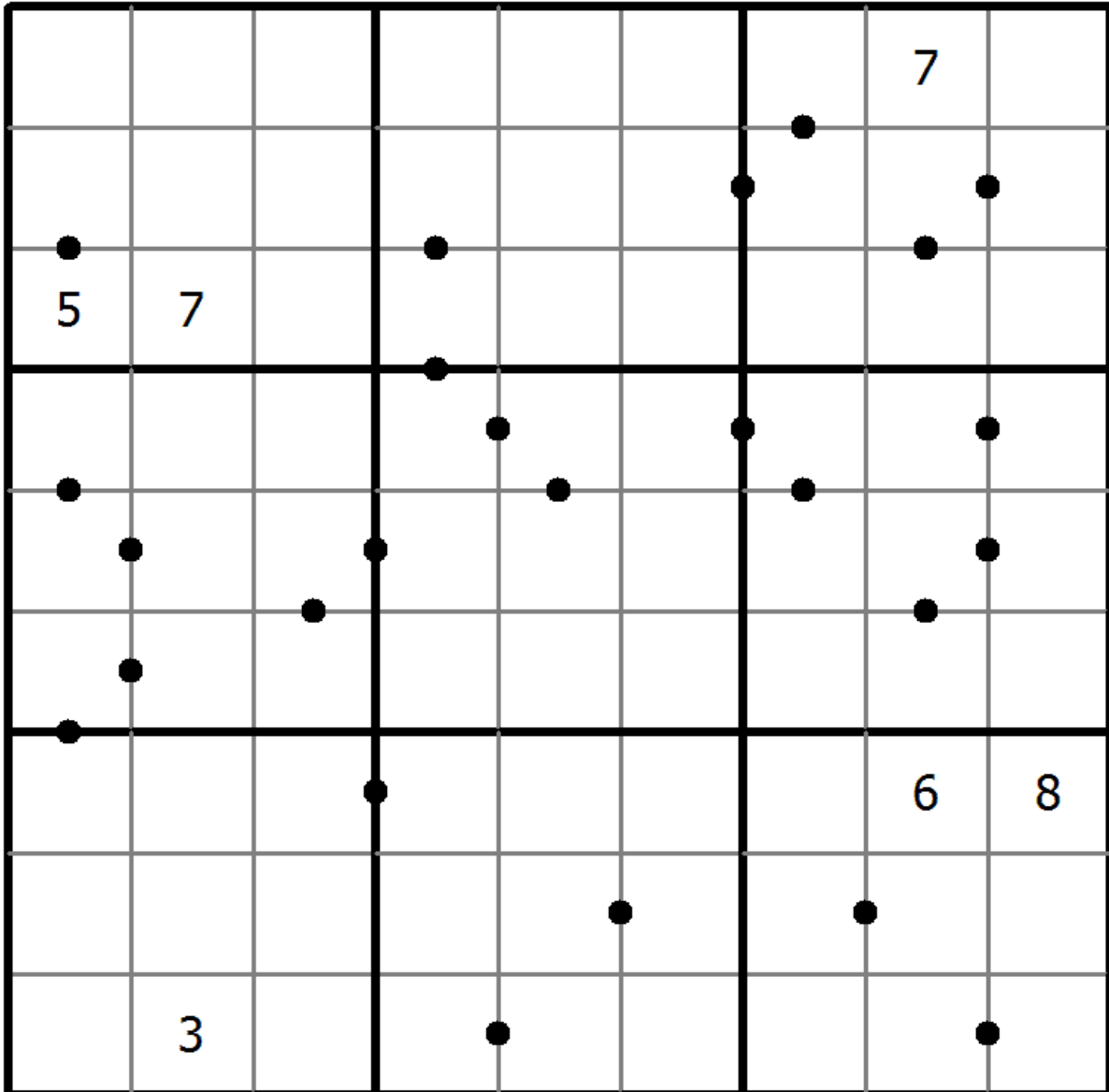
Answer 8 sudoku

Place a digit from 1 to 9 into each of the empty squares so that each digit appears exactly once in each of the rows, columns and the nine outlined 3x3 regions.

A dot between two cells indicates that the result of at least one of the basic operations (addition, subtraction, multiplication, division) of the numbers in these two cells is 8. Is the dot missing, no one of the basic operations results in an 8.



(Solution)



© sudoku.today

[Sudoku Today](https://sudoku.today) (<https://sudoku.today>)

[Samurai Sudoku](https://samuraisudoku.com) (<https://samuraisudoku.com>)

[Newdoku](https://newdoku.com) (<https://newdoku.com>)

[Sudoku Puzzle](https://www.sudokupuzzle.org) (<https://www.sudokupuzzle.org>)

Maximin Sudoku

Place a digit from 1 to 9 into each of the empty squares so that each digit appears exactly once in each of the rows, columns and the nine outlined 3x3 regions.

A number at the edge of the diagram indicates the difference between the highest and the lowest number in the first three cells in the corresponding row or column.



(Solution)

	6	5	6	6	2	7	5	3	8	
5										4
7				4						5
4	8								9	7
7										4
6										6
2							1			6
4								7		4
4										4
6					5					7
	2	7	7	7	7	3	5	6	5	

© sudoku.today

[Sudoku Today](https://sudoku.today) (<https://sudoku.today>)

[Samurai Sudoku](https://samuraisudoku.com) (<https://samuraisudoku.com>)

[Newdoku](https://newdoku.com) (<https://newdoku.com>)

[Sudoku Puzzle](https://www.sudokupuzzle.org) (<https://www.sudokupuzzle.org>)

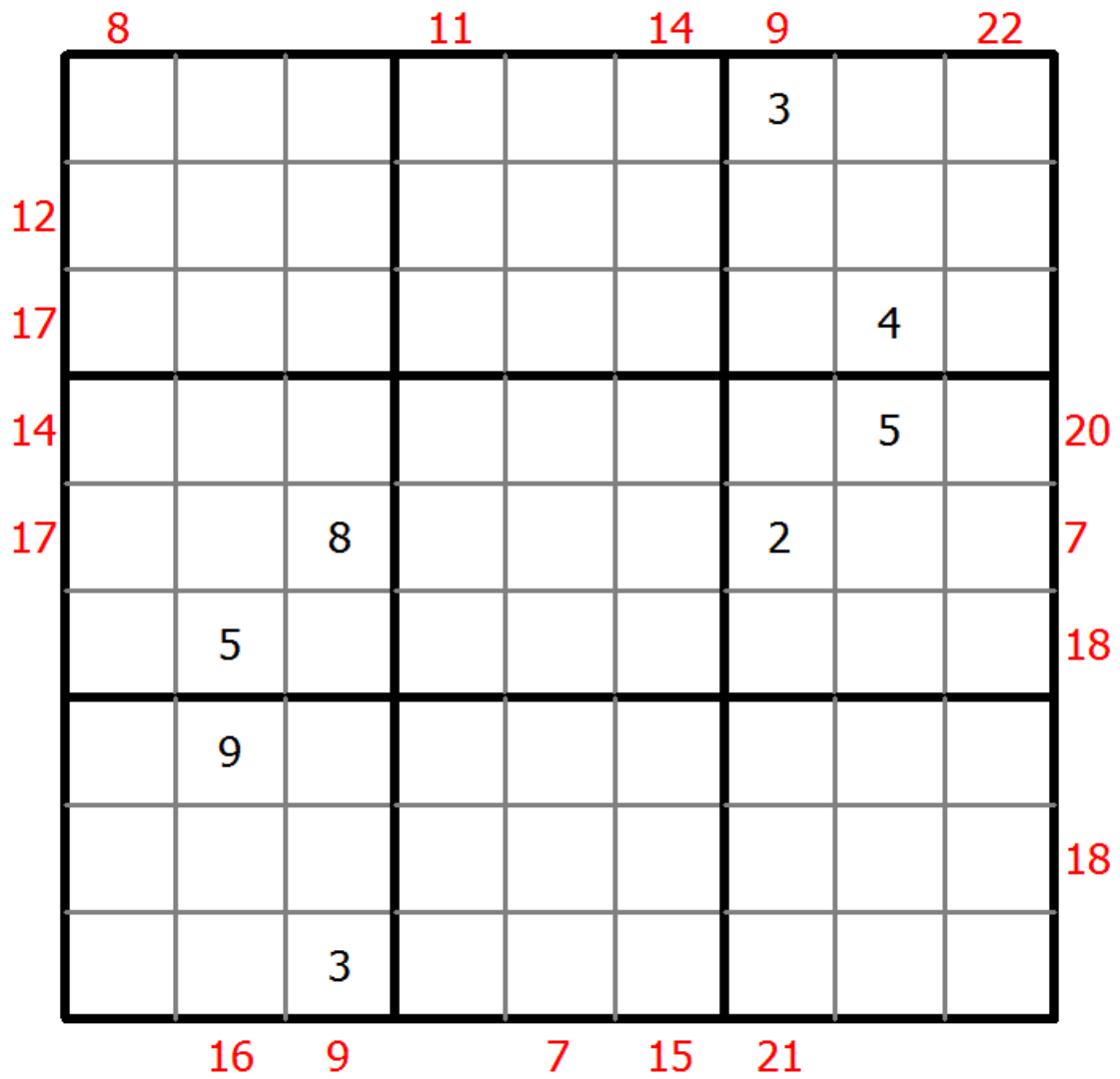
Sum Frame Sudoku

Place a digit from 1 to 9 into each of the empty squares so that each digit appears exactly once in each of the rows, columns and the nine outlined 3x3 regions.

Digits outside the grid indicate the sum of the first 3 digits in the corresponding direction.



(Solution)



© sudoku.today

[Sudoku Today](https://sudoku.today) (<https://sudoku.today>)

[Samurai Sudoku](https://samuraisudoku.com) (<https://samuraisudoku.com>)

[Newdoku](https://newdoku.com) (<https://newdoku.com>)

[Sudoku Puzzle](https://www.sudoku puzzle.org) (<https://www.sudoku puzzle.org>)

Fortress Sudoku

Place a digit from 1 to 9 into each of the empty squares so that each digit appears exactly once in each of the rows, columns and the nine outlined 3x3 regions.

If a shaded cell and a white cell are adjacent then the digit in the shaded cell is greater.



(Solution)

				4				
					6		8	
3						6		
		7	3					1
1								
						4	6	
						8		
			5					

© sudoku.today

[Sudoku Today](https://sudoku.today) (<https://sudoku.today>)

[Samurai Sudoku](https://samuraisudoku.com) (<https://samuraisudoku.com>)

[Newdoku](https://newdoku.com) (<https://newdoku.com>)

[Sudoku Puzzle](https://www.sudokupuzzle.org) (<https://www.sudokupuzzle.org>)

No Touch Sudoku

Place a digit from 1 to 9 into each of the empty squares so that each digit appears exactly once in each of the rows, columns and the nine outlined 3x3 regions.

Identical digits do not touch each other diagonally.



(Solution)

2	6					8		
	8					3		
1		3						6
					5			8
		1				7		
9			6					
4						6		7
		9					1	
		6					2	5

© sudoku.today

[Sudoku Today](https://sudoku.today) (<https://sudoku.today>)

[Samurai Sudoku](https://samuraisudoku.com) (<https://samuraisudoku.com>)

[Newdoku](https://newdoku.com) (<https://newdoku.com>)

[Sudoku Puzzle](https://www.sudokupuzzle.org) (<https://www.sudokupuzzle.org>)

Extra Regions Sudoku

Place a digit from 1 to 9 into each of the empty squares so that each digit appears exactly once in each of the rows, columns and the nine outlined 3x3 regions.

The connected shaded cells contain each digit from 1 to 9.



(Solution)

		4	9	1				
			8				6	4
7						5		3
			6				2	
				7				
	1				2			
4		6						8
5	8				6			
				5	8	3		

© sudoku.today

[Sudoku Today](https://sudoku.today) (<https://sudoku.today>)

[Samurai Sudoku](https://samuraisudoku.com) (<https://samuraisudoku.com>)

[Newdoku](https://newdoku.com) (<https://newdoku.com>)

[Sudoku Puzzle](https://www.sudokupuzzle.org) (<https://www.sudokupuzzle.org>)

Quad Sums Sudoku

Place a digit from 1 to 9 into each of the empty squares so that each digit appears exactly once in each of the rows, columns and the nine outlined 3x3 regions.

One of the numbers in the four cells around a dot is the num of the other three numbers.



(Solution)

5	1				9			
2		3			8			
				3				7
				6				
8			9		4			1
				8				
6				2				
			8			5		3
			4				1	2

© sudoku.today

[Sudoku Today](https://sudoku.today) (<https://sudoku.today>)

[Samurai Sudoku](https://samuraisudoku.com) (<https://samuraisudoku.com>)

[Newdoku](https://newdoku.com) (<https://newdoku.com>)

[Sudoku Puzzle](https://www.sudokupuzzle.org) (<https://www.sudokupuzzle.org>)

XV Sudoku

Place a digit from 1 to 9 into each of the empty squares so that each digit appears exactly once in each of the rows, columns and the nine outlined 3x3 regions.

Adjacent cells with digits summing to 5 are marked by V, while those summing to 10 are marked by X. All possible V and X are marked.



(Solution)

8						V	X		
			5						
6	X		V				5		
			X			V			
	X			X	6		V		
					X				
V			X						
			V	2					
						X			
3	X					X	V	4	2
			X		X			X	
			X		1		X		
				X					
		V						6	

© sudoku.today

[Sudoku Today](https://sudoku.today) (https://sudoku.today)
[Samurai Sudoku](https://samuraisudoku.com) (https://samuraisudoku.com)

[Newdoku](https://newdoku.com) (https://newdoku.com)
[Sudoku Puzzle](https://www.sudokupuzzle.org) (https://www.sudokupuzzle.org)

Hybrid Sudoku (X Sums + Consecutive)

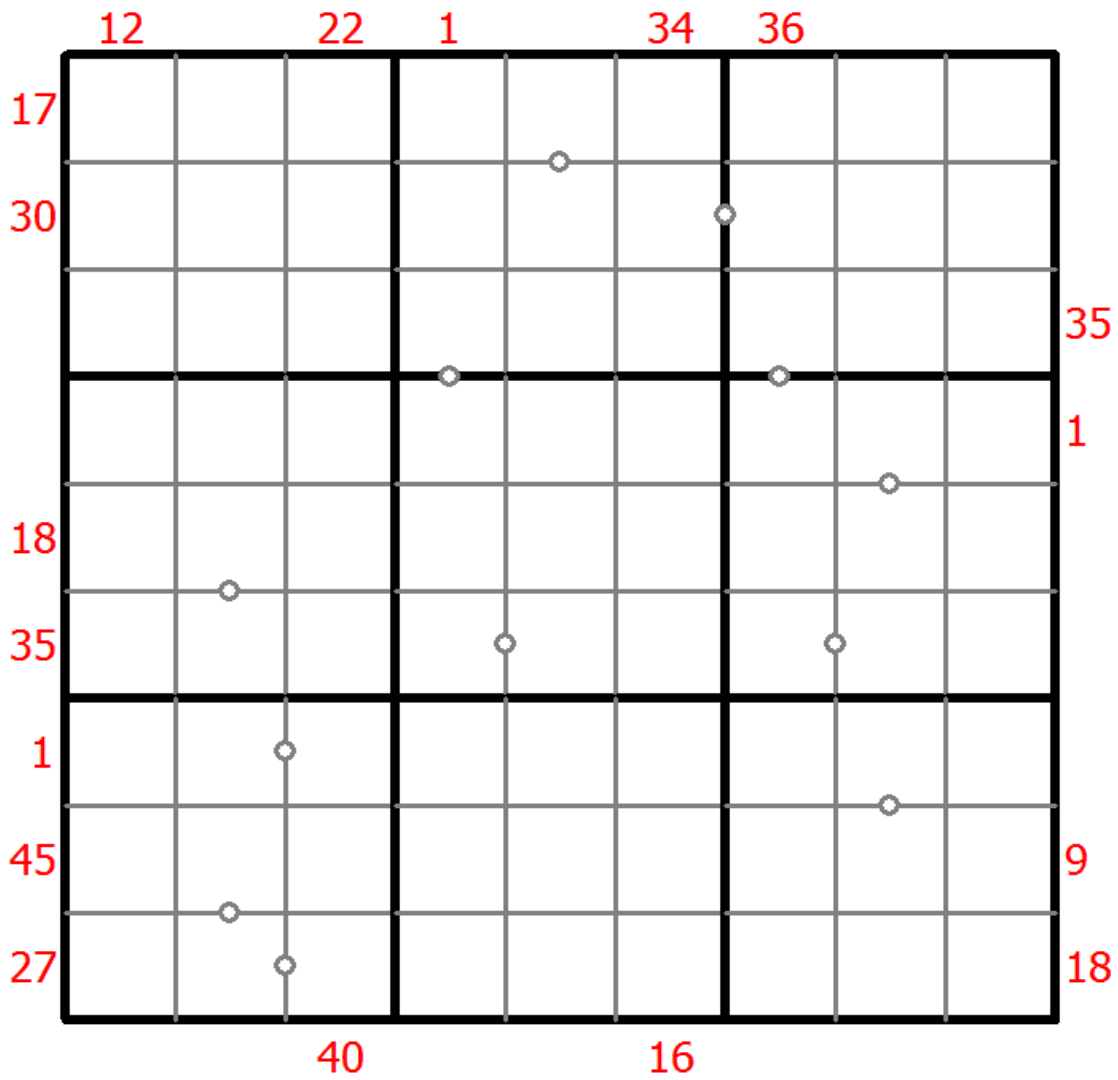
Place a digit from 1 to 9 into each of the empty squares so that each digit appears exactly once in each of the rows, columns and the nine outlined 3x3 regions.

Each number outside the grid is the sum of the first X numbers placed in the corresponding direction, where X is equal to the first number placed in that direction.

There are some dots between cells. The numbers on each side of a dot must always be consecutive. Not all possible dots are marked.



(Solution)



© sudoku.today

[Sudoku Today](https://sudoku.today) (<https://sudoku.today>)

[Samurai Sudoku](https://samuraisudoku.com) (<https://samuraisudoku.com>)

[Newdoku](https://newdoku.com) (<https://newdoku.com>)

[Sudoku Puzzle](https://www.sudokupuzzle.org) (<https://www.sudokupuzzle.org>)

Classic Sudoku

Place a digit from 1 to 9 into each of the empty squares so that each digit appears exactly once in each of the rows, columns and the nine outlined 3x3 regions.



(Solution)

9							6	7
2			8		6			
				9		5		
					2	6	3	
	6			5			4	
	4	3	6					
		8		4				
			9		1			8
7	2							9

© sudoku.today

[Sudoku Today](https://sudoku.today) (<https://sudoku.today>)

[Samurai Sudoku](https://samuraisudoku.com) (<https://samuraisudoku.com>)

[Newdoku](https://newdoku.com) (<https://newdoku.com>)

[Sudoku Puzzle](https://www.sudokupuzzle.org) (<https://www.sudokupuzzle.org>)

Classic Sudoku

Place a digit from 1 to 9 into each of the empty squares so that each digit appears exactly once in each of the rows, columns and the nine outlined 3x3 regions.



(Solution)

						4	8	5
		3	2	8				7
					9	6		
				9				1
	2			3			4	
8				6				
		5	4					
6				1	8	5		
2	3	1						

© sudoku.today

[Sudoku Today](https://sudoku.today) (<https://sudoku.today>)

[Samurai Sudoku](https://samuraisudoku.com) (<https://samuraisudoku.com>)

[Newdoku](https://newdoku.com) (<https://newdoku.com>)

[Sudoku Puzzle](https://www.sudokupuzzle.org) (<https://www.sudokupuzzle.org>)

Classic Sudoku

Place a digit from 1 to 9 into each of the empty squares so that each digit appears exactly once in each of the rows, columns and the nine outlined 3x3 regions.



(Solution)

					8			
9							4	2
3	1		6					9
	6		8		3	7		
				6				
		1	9		7		5	
2					9		6	3
7	3							5
			2					

© sudoku.today

[Sudoku Today](https://sudoku.today) (<https://sudoku.today>)

[Samurai Sudoku](https://samuraisudoku.com) (<https://samuraisudoku.com>)

[Newdoku](https://newdoku.com) (<https://newdoku.com>)

[Sudoku Puzzle](https://www.sudokupuzzle.org) (<https://www.sudokupuzzle.org>)

Classic Sudoku

Place a digit from 1 to 9 into each of the empty squares so that each digit appears exactly once in each of the rows, columns and the nine outlined 3x3 regions.



(Solution)

		7						
8	4			3	5			
		9					8	5
6			9		1			
	7			6			4	
			2		8			7
4	1					9		
			7	1			6	3
						8		

© sudoku.today

[Sudoku Today](https://sudoku.today) (<https://sudoku.today>)

[Samurai Sudoku](https://samuraisudoku.com) (<https://samuraisudoku.com>)

[Newdoku](https://newdoku.com) (<https://newdoku.com>)

[Sudoku Puzzle](https://www.sudokupuzzle.org) (<https://www.sudokupuzzle.org>)

Classic Sudoku

Place a digit from 1 to 9 into each of the empty squares so that each digit appears exactly once in each of the rows, columns and the nine outlined 3x3 regions.



(Solution)

4		2		3				9
					8		4	5
				9	2			
	1					3	9	
	4	5					1	
			7	1				
2	9		3					
6				4		7		3

© sudoku.today

[Sudoku Today](https://sudoku.today) (<https://sudoku.today>)

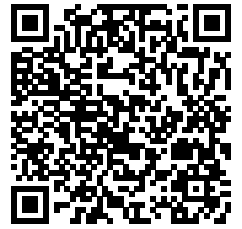
[Samurai Sudoku](https://samuraisudoku.com) (<https://samuraisudoku.com>)

[Newdoku](https://newdoku.com) (<https://newdoku.com>)

[Sudoku Puzzle](https://www.sudokupuzzle.org) (<https://www.sudokupuzzle.org>)

Classic Sudoku

Place a digit from 1 to 9 into each of the empty squares so that each digit appears exactly once in each of the rows, columns and the nine outlined 3x3 regions.



(Solution)

				6	4		8	
8	2			7		1		
5	7		2					
								3
	3						7	
1								
					6		3	4
		7		8			2	5
	4		3	9				

© sudoku.today

[Sudoku Today](https://sudoku.today) (<https://sudoku.today>)

[Samurai Sudoku](https://samuraisudoku.com) (<https://samuraisudoku.com>)

[Newdoku](https://newdoku.com) (<https://newdoku.com>)

[Sudoku Puzzle](https://www.sudokupuzzle.org) (<https://www.sudokupuzzle.org>)

Classic Sudoku

Place a digit from 1 to 9 into each of the empty squares so that each digit appears exactly once in each of the rows, columns and the nine outlined 3x3 regions.



(Solution)

	8			3				1
	9	6						
5			1			6		
	7							4
		4	2		8	1		
3							6	
		7			3			2
						3	5	
9				8			1	

© sudoku.today

[Sudoku Today](https://sudoku.today) (<https://sudoku.today>)

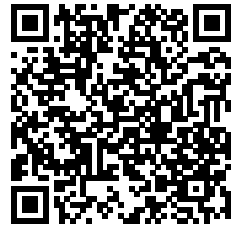
[Samurai Sudoku](https://samuraisudoku.com) (<https://samuraisudoku.com>)

[Newdoku](https://newdoku.com) (<https://newdoku.com>)

[Sudoku Puzzle](https://www.sudokupuzzle.org) (<https://www.sudokupuzzle.org>)

Classic Sudoku

Place a digit from 1 to 9 into each of the empty squares so that each digit appears exactly once in each of the rows, columns and the nine outlined 3x3 regions.



(Solution)

8	9							
				5		6		
2						5		9
			6			7		4
3			8	9	2			5
1		8			4			
7		3						6
		9		6				
							2	1

© sudoku.today

[Sudoku Today](https://sudoku.today) (<https://sudoku.today>)

[Samurai Sudoku](https://samuraisudoku.com) (<https://samuraisudoku.com>)

[Newdoku](https://newdoku.com) (<https://newdoku.com>)

[Sudoku Puzzle](https://www.sudokupuzzle.org) (<https://www.sudokupuzzle.org>)

Classic Sudoku

Place a digit from 1 to 9 into each of the empty squares so that each digit appears exactly once in each of the rows, columns and the nine outlined 3x3 regions.



(Solution)

				9				
		2			6	5		
			1	5				4
1		6						5
7			4		5			2
3						7		9
9				8	1			
		5	9			2		
				7				

© sudoku.today

[Sudoku Today](https://sudoku.today) (<https://sudoku.today>)

[Samurai Sudoku](https://samuraisudoku.com) (<https://samuraisudoku.com>)

[Newdoku](https://newdoku.com) (<https://newdoku.com>)

[Sudoku Puzzle](https://www.sudokupuzzle.org) (<https://www.sudokupuzzle.org>)

Classic Sudoku

Place a digit from 1 to 9 into each of the empty squares so that each digit appears exactly once in each of the rows, columns and the nine outlined 3x3 regions.



(Solution)

	5				3			
	7					8		6
9				6			3	
		5		1				
2	6						4	5
				8		7		
	1			5				2
3		4					1	
			3				9	

© sudoku.today

[Sudoku Today](https://sudoku.today) (<https://sudoku.today>)

[Samurai Sudoku](https://samuraisudoku.com) (<https://samuraisudoku.com>)

[Newdoku](https://newdoku.com) (<https://newdoku.com>)

[Sudoku Puzzle](https://www.sudokupuzzle.org) (<https://www.sudokupuzzle.org>)

Classic Sudoku

Place a digit from 1 to 9 into each of the empty squares so that each digit appears exactly once in each of the rows, columns and the nine outlined 3x3 regions.



(Solution)

	8	9					5	
						1		8
		7	5		1			
	7			1	8			
		8		2		6		
			4	9			8	
			6		3	8		
8		5						
	2					7	4	

© sudoku.today

[Sudoku Today](https://sudoku.today) (<https://sudoku.today>)

[Samurai Sudoku](https://samuraisudoku.com) (<https://samuraisudoku.com>)

[Newdoku](https://newdoku.com) (<https://newdoku.com>)

[Sudoku Puzzle](https://www.sudokupuzzle.org) (<https://www.sudokupuzzle.org>)

Classic Sudoku

Place a digit from 1 to 9 into each of the empty squares so that each digit appears exactly once in each of the rows, columns and the nine outlined 3x3 regions.



(Solution)

				7				6
			9				4	
7		5		3				1
	6		1					5
8								3
3					4		2	
4				2		3		7
	2				6			
5				9				

© sudoku.today

[Sudoku Today](https://sudoku.today) (<https://sudoku.today>)

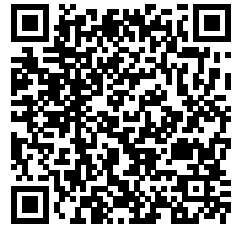
[Samurai Sudoku](https://samuraisudoku.com) (<https://samuraisudoku.com>)

[Newdoku](https://newdoku.com) (<https://newdoku.com>)

[Sudoku Puzzle](https://www.sudokupuzzle.org) (<https://www.sudokupuzzle.org>)

Classic Sudoku

Place a digit from 1 to 9 into each of the empty squares so that each digit appears exactly once in each of the rows, columns and the nine outlined 3x3 regions.



(Solution)

						8		
	5			7	4		2	
3	4							9
7		8			9			
			8		6			
			2			9		1
6							5	7
	1		4	3			6	
		5						

© sudoku.today

[Sudoku Today](https://sudoku.today) (<https://sudoku.today>)

[Samurai Sudoku](https://samuraisudoku.com) (<https://samuraisudoku.com>)

[Newdoku](https://newdoku.com) (<https://newdoku.com>)

[Sudoku Puzzle](https://www.sudokupuzzle.org) (<https://www.sudokupuzzle.org>)

Classic Sudoku

Place a digit from 1 to 9 into each of the empty squares so that each digit appears exactly once in each of the rows, columns and the nine outlined 3x3 regions.



(Solution)

	6	7				3		
9			1					5
					8	4		
	8		4	1		9		
		1		6	2		8	
		5	7					
3					9			4
		2				7	3	

© sudoku.today

[Sudoku Today](https://sudoku.today) (<https://sudoku.today>)

[Samurai Sudoku](https://samuraisudoku.com) (<https://samuraisudoku.com>)

[Newdoku](https://newdoku.com) (<https://newdoku.com>)

[Sudoku Puzzle](https://www.sudokupuzzle.org) (<https://www.sudokupuzzle.org>)

Classic Sudoku

Place a digit from 1 to 9 into each of the empty squares so that each digit appears exactly once in each of the rows, columns and the nine outlined 3x3 regions.



(Solution)

					5		7	
	5				9	6	1	
7					4	3		
		8				7		3
				3				
9		3				5		
		9	6					8
	2	6	4				9	
	3		2					

© sudoku.today

[Sudoku Today](https://sudoku.today) (<https://sudoku.today>)

[Samurai Sudoku](https://samuraisudoku.com) (<https://samuraisudoku.com>)

[Newdoku](https://newdoku.com) (<https://newdoku.com>)

[Sudoku Puzzle](https://www.sudokupuzzle.org) (<https://www.sudokupuzzle.org>)

Classic Sudoku

Place a digit from 1 to 9 into each of the empty squares so that each digit appears exactly once in each of the rows, columns and the nine outlined 3x3 regions.



(Solution)

		8		1				9
			6		5		2	
		3					6	1
	5		4					7
8				7				6
7					3		4	
4	7					6		
	6		9		1			
9				5		4		

© sudoku.today

[Sudoku Today](https://sudoku.today) (<https://sudoku.today>)

[Samurai Sudoku](https://samuraisudoku.com) (<https://samuraisudoku.com>)

[Newdoku](https://newdoku.com) (<https://newdoku.com>)

[Sudoku Puzzle](https://www.sudokupuzzle.org) (<https://www.sudokupuzzle.org>)

Classic Sudoku

Place a digit from 1 to 9 into each of the empty squares so that each digit appears exactly once in each of the rows, columns and the nine outlined 3x3 regions.



(Solution)

	7						9	
				9	7	2	4	
			4			1		
9		2				3	5	
				8				
	3	1				7		8
		4			3			
	2	8	5	1				
	9						7	

© sudoku.today

[Sudoku Today](https://sudoku.today) (<https://sudoku.today>)

[Samurai Sudoku](https://samuraisudoku.com) (<https://samuraisudoku.com>)

[Newdoku](https://newdoku.com) (<https://newdoku.com>)

[Sudoku Puzzle](https://www.sudokupuzzle.org) (<https://www.sudokupuzzle.org>)

Classic Sudoku

Place a digit from 1 to 9 into each of the empty squares so that each digit appears exactly once in each of the rows, columns and the nine outlined 3x3 regions.



(Solution)

			5	6				
9					8			
6		7						
	3		8		5		4	
	2	8				9	5	
	5		2		4		3	
						5		6
			7					2
				1	3			

© sudoku.today

[Sudoku Today](https://sudoku.today) (<https://sudoku.today>)

[Samurai Sudoku](https://samuraisudoku.com) (<https://samuraisudoku.com>)

[Newdoku](https://newdoku.com) (<https://newdoku.com>)

[Sudoku Puzzle](https://www.sudokupuzzle.org) (<https://www.sudokupuzzle.org>)

Classic Sudoku

Place a digit from 1 to 9 into each of the empty squares so that each digit appears exactly once in each of the rows, columns and the nine outlined 3x3 regions.



(Solution)

	7	8			1			
			3					4
3	6			8				
	4			1		9		6
7		1		2			4	
				9			5	1
9					8			
			7			6	3	

© sudoku.today

[Sudoku Today](https://sudoku.today) (<https://sudoku.today>)

[Samurai Sudoku](https://samuraisudoku.com) (<https://samuraisudoku.com>)

[Newdoku](https://newdoku.com) (<https://newdoku.com>)

[Sudoku Puzzle](https://www.sudokupuzzle.org) (<https://www.sudokupuzzle.org>)

Classic Sudoku

Place a digit from 1 to 9 into each of the empty squares so that each digit appears exactly once in each of the rows, columns and the nine outlined 3x3 regions.



(Solution)

			2	3	6			
2								1
	9				1			
		2				4	1	8
	1			9			6	
8	7	5				3		
			5				3	
5								2
			6	8	9			

© sudoku.today

[Sudoku Today](https://sudoku.today) (<https://sudoku.today>)

[Samurai Sudoku](https://samuraisudoku.com) (<https://samuraisudoku.com>)

[Newdoku](https://newdoku.com) (<https://newdoku.com>)

[Sudoku Puzzle](https://www.sudokupuzzle.org) (<https://www.sudokupuzzle.org>)