

## Multi Diagonal Sudoku

Place a digit from 1 to 9 into each of the empty squares so that each digit appears exactly once in each of the rows, columns and the nine outlined 3x3 regions.

Digits do not repeat along the marked diagonals.



(Solution)

8						1	3	
5					3	4		
								2
						5	7	6
9	7	5						
2								
		4	7					8
	5	6						4

© sudoku.today

[Sudoku Today](https://sudoku.today) ( <https://sudoku.today> )

[Samurai Sudoku](https://samuraisudoku.com) ( <https://samuraisudoku.com> )

[Newdoku](https://newdoku.com) ( <https://newdoku.com> )

[Sudoku Puzzle](https://www.sudokupuzzle.org) ( <https://www.sudokupuzzle.org> )

## Extra Regions Sudoku

Place a digit from 1 to 9 into each of the empty squares so that each digit appears exactly once in each of the rows, columns and the nine outlined 3x3 regions.

The connected shaded cells contain each digit from 1 to 9.



(Solution)

	2						9	
						5		6
		6	3		9	1		7
		5		1	8			
			2	3		7		
5		2	4		1	8		
7		3						
	4						5	

© sudoku.today

[Sudoku Today](https://sudoku.today) ( <https://sudoku.today> )  
[Samurai Sudoku](https://samuraisudoku.com) ( <https://samuraisudoku.com> )

[Newdoku](https://newdoku.com) ( <https://newdoku.com> )  
[Sudoku Puzzle](https://www.sudokupuzzle.org) ( <https://www.sudokupuzzle.org> )

## Extra Regions Sudoku

Place a digit from 1 to 9 into each of the empty squares so that each digit appears exactly once in each of the rows, columns and the nine outlined 3x3 regions.

The connected shaded cells contain each digit from 1 to 9.



(Solution)

3	2	4						
		9				2		
5				4				1
	9					7	6	
6								2
	7	3					9	
2				8				3
		8				4		
						8	2	9

© sudoku.today

[Sudoku Today](https://sudoku.today) ( <https://sudoku.today> )

[Samurai Sudoku](https://samuraisudoku.com) ( <https://samuraisudoku.com> )

[Newdoku](https://newdoku.com) ( <https://newdoku.com> )

[Sudoku Puzzle](https://www.sudokupuzzle.org) ( <https://www.sudokupuzzle.org> )

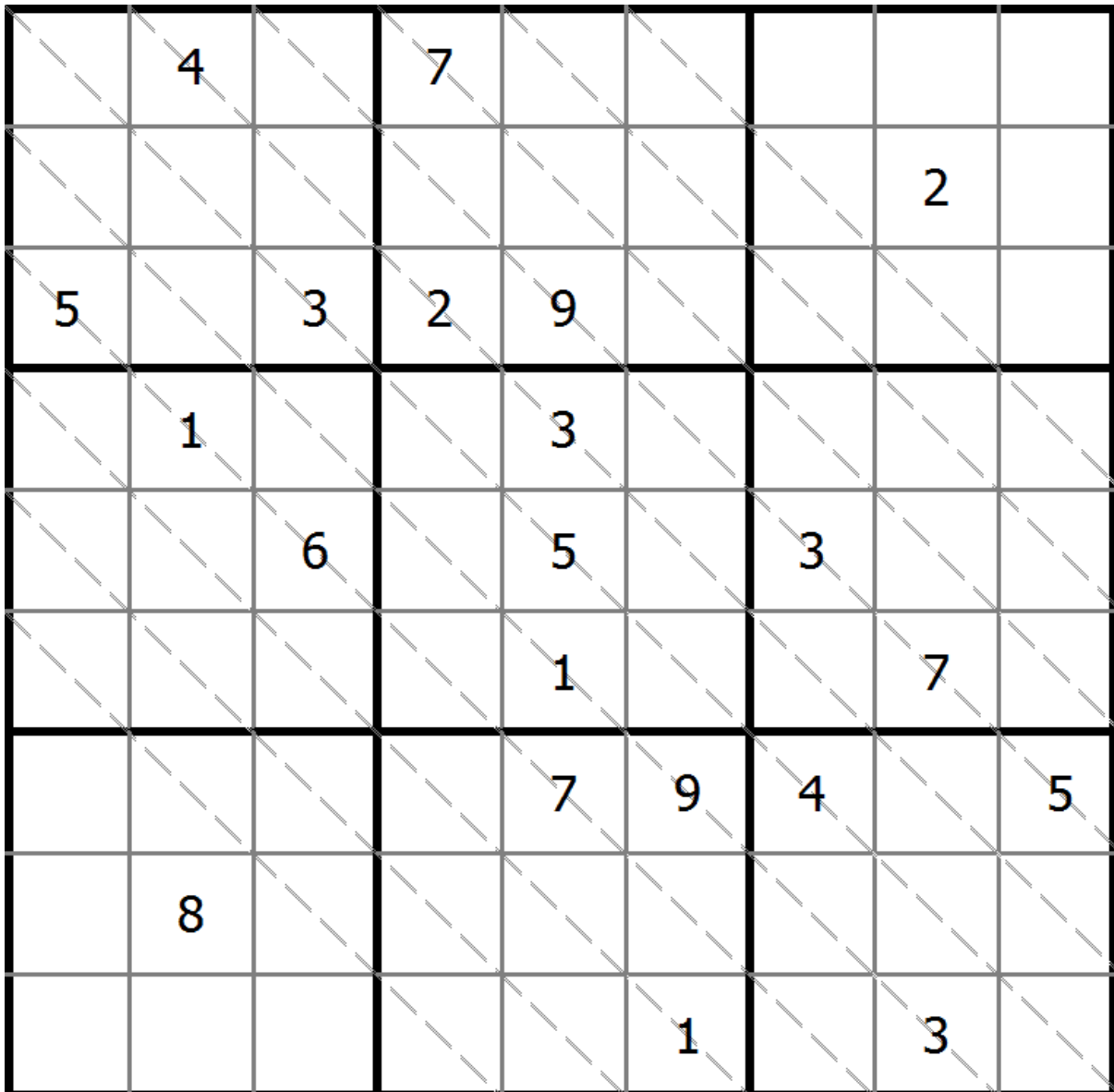
## Multi Diagonal Sudoku

Place a digit from 1 to 9 into each of the empty squares so that each digit appears exactly once in each of the rows, columns and the nine outlined 3x3 regions.

Digits do not repeat along the marked diagonals.



(Solution)



© sudoku.today

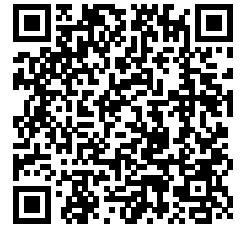
[Sudoku Today](https://sudoku.today) ( <https://sudoku.today> )  
[Samurai Sudoku](https://samuraisudoku.com) ( <https://samuraisudoku.com> )

[Newdoku](https://newdoku.com) ( <https://newdoku.com> )  
[Sudoku Puzzle](https://www.sudokupuzzle.org) ( <https://www.sudokupuzzle.org> )

## Quotients Sudoku

Place a digit from 1 to 9 into each of the empty squares so that each digit appears exactly once in each of the rows, columns and the nine outlined 3x3 regions.

A number between two cells indicates the quotient of the numbers in these cells. A number between four cells indicates the quotient between two diagonally adjacent cells, either top left + right bottom (\) or top right + bottom left (/).



(Solution)

	$2/4$	$2/3$						
					$/1/2$			
			$3/8$		$2/3$			
	$\backslash 2/7$							
	$7/9$	$5/7$						
$1/9$		$5/7$						4
			$\backslash 1/7$					
6				4		$7/8$		
		$1/2$		2		$5/8$		
	$3/4$			$2/9$			$\backslash 1/5$	
						4		
	$5/7$							
			$1/4$					
		$\backslash 2/9$						
				6				7

© sudoku.today

[Sudoku Today](https://sudoku.today) ( <https://sudoku.today> )

[Samurai Sudoku](https://samuraisudoku.com) ( <https://samuraisudoku.com> )

[Newdoku](https://newdoku.com) ( <https://newdoku.com> )

[Sudoku Puzzle](https://www.sudokupuzzle.org) ( <https://www.sudokupuzzle.org> )

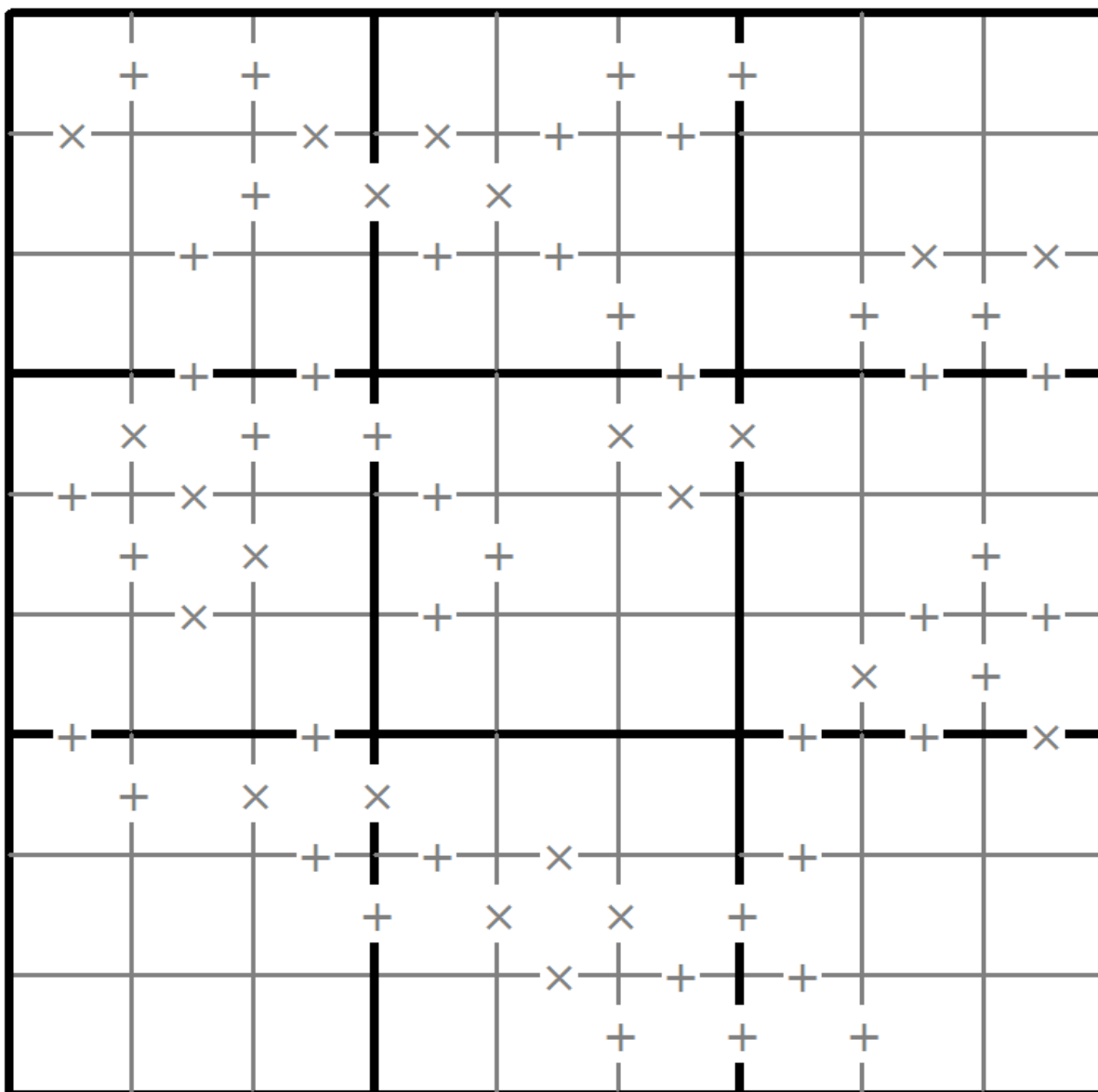
# Makodoku

Place a digit from 1 to 9 into each of the empty squares so that each digit appears exactly once in each of the rows, columns and the nine outlined 3x3 regions.

A cross between two cells indicates that the product of the numbers in these cells is less than 10. A plus between two cells indicates that the sum of the numbers in these cells is less than 10. If the sum and product are less than 10, then there is a cross between these cells. If there is no sign between two cells, then both sum and product are at least 10.



(Solution)



© sudoku.today

[Sudoku Today](https://sudoku.today) ( <https://sudoku.today> )

[Samurai Sudoku](https://samuraisudoku.com) ( <https://samuraisudoku.com> )

[Newdoku](https://newdoku.com) ( <https://newdoku.com> )

[Sudoku Puzzle](https://www.sudokupuzzle.org) ( <https://www.sudokupuzzle.org> )

## Neighbourship Sudoku

Place a digit from 1 to 9 into each of the empty squares so that each digit appears exactly once in each of the rows, columns and the nine outlined 3x3 regions.

A number in a squared cell indicates how many different numbers the four diagonally adjacent cells contain. A number in a circled cell indicates how many different numbers the eight orthogonally and diagonally adjacent cells contain.



(Solution)

				<input type="text"/>	1	6		
	2					9		
<input type="text"/>		<input type="text"/>	3			<input type="text"/>		
	9				<input type="text"/>	7		
				2			<input type="text"/>	
							<input type="text"/>	
				<input type="text"/>	9		1	<input type="text"/>
		5			2		6	
		6	1	8				

© sudoku.today

[Sudoku Today](https://sudoku.today) ( <https://sudoku.today> )

[Samurai Sudoku](https://samuraisudoku.com) ( <https://samuraisudoku.com> )

[Newdoku](https://newdoku.com) ( <https://newdoku.com> )

[Sudoku Puzzle](https://www.sudokupuzzle.org) ( <https://www.sudokupuzzle.org> )

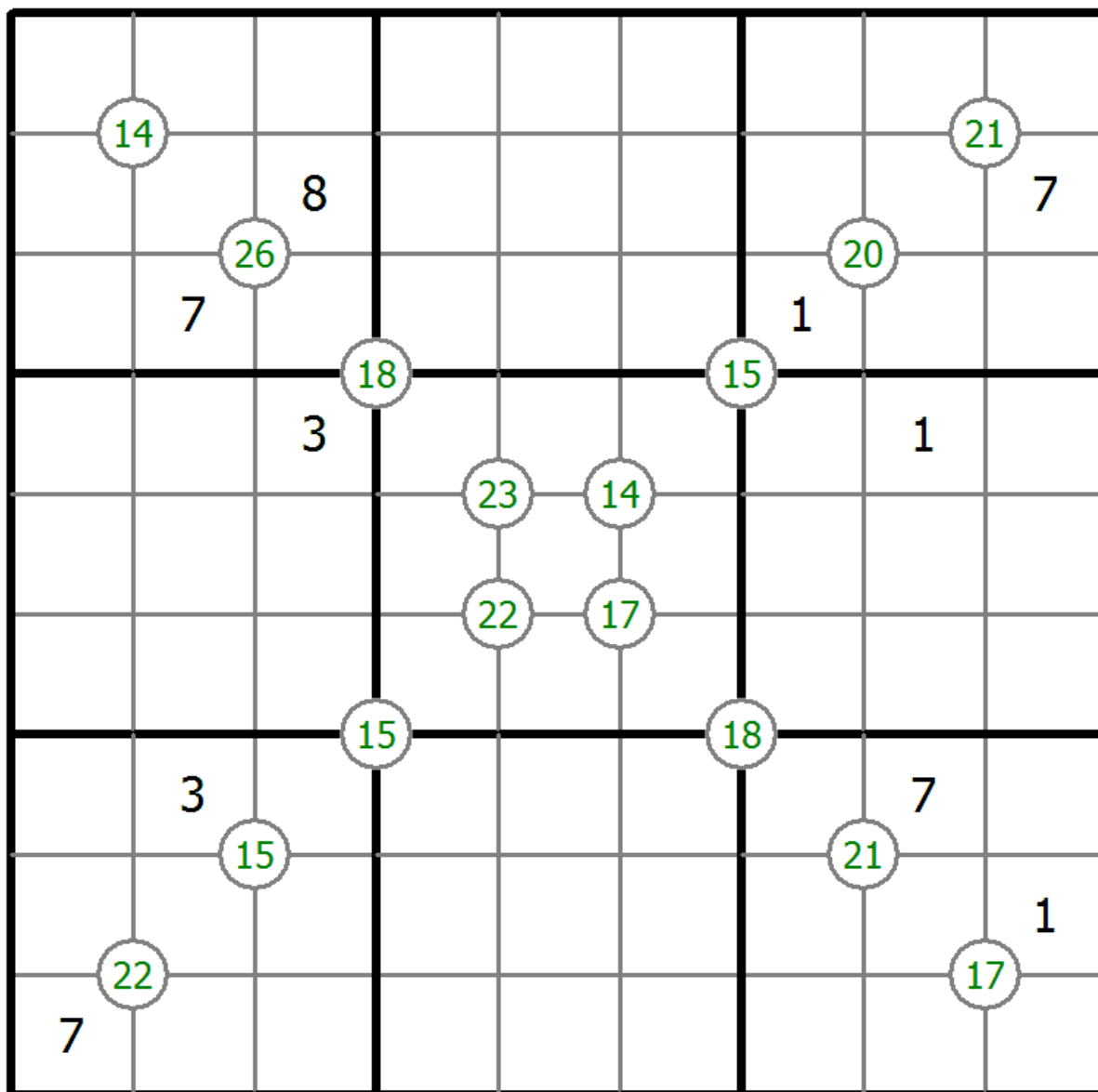
# Group Sum Sudoku

Place a digit from 1 to 9 into each of the empty squares so that each digit appears exactly once in each of the rows, columns and the nine outlined 3x3 regions.

Each number at the intersection of four cells is the sum of digits in those four cells.



(Solution)



© sudoku.today

[Sudoku Today](https://sudoku.today) ( <https://sudoku.today> )  
[Samurai Sudoku](https://samuraisudoku.com) ( <https://samuraisudoku.com> )

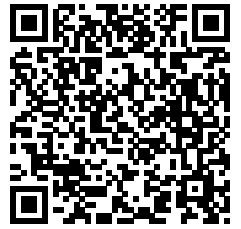
[Newdoku](https://newdoku.com) ( <https://newdoku.com> )  
[Sudoku Puzzle](https://www.sudokupuzzle.org) ( <https://www.sudokupuzzle.org> )



## Cupid Sudoku

Place a digit from 1 to 9 into each of the empty squares so that each digit appears exactly once in each of the rows, columns and the nine outlined 3x3 regions.

An arrow in a cell indicates that the number in this cell is repeated at least once in the direction the arrow points to.



(Solution)

↘		9	1	↙			2	
	↘ 2				↙			
	8	↘ 7				↘ 5		
		4					↘	
↗					1			↘
	↗ 6		8					
7		↗				↖	9	
			↗			3	↖ 5	4
8				↗		6		↖

© sudoku.today

[Sudoku Today](https://sudoku.today) ( <https://sudoku.today> )

[Samurai Sudoku](https://samuraisudoku.com) ( <https://samuraisudoku.com> )

[Newdoku](https://newdoku.com) ( <https://newdoku.com> )

[Sudoku Puzzle](https://www.sudokupuzzle.org) ( <https://www.sudokupuzzle.org> )

# Thermo Sudoku

Place a digit from 1 to 9 into each of the empty squares so that each digit appears exactly once in each of the rows, columns and the nine outlined 3x3 regions.

Some thermometer shapes are placed in the grid. Digits are strictly increasing from the round bulb of the thermometer to each flat end.



(Solution)

		8				8		
		4		1				
				7				3
		9				4		
	1					6		

© sudoku.today

[Sudoku Today](https://sudoku.today) ( <https://sudoku.today> )  
[Samurai Sudoku](https://samuraisudoku.com) ( <https://samuraisudoku.com> )

[Newdoku](https://newdoku.com) ( <https://newdoku.com> )  
[Sudoku Puzzle](https://www.sudokupuzzle.org) ( <https://www.sudokupuzzle.org> )

## Edge Difference Sudoku

Place a digit from 1 to 9 into each of the empty squares so that each digit appears exactly once in each of the rows, columns and the nine outlined 3x3 regions.

A number at the edge of the diagram indicates the difference between the first and the last number in the corresponding row or column.



(Solution)

	4	6	3	1	4	2	1	4	7
6							4		
2									
3	9								
1					1		7		
2									
1			1	5					
6		9							
6			5						
5					9				

© sudoku.today

[Sudoku Today](https://sudoku.today) ( <https://sudoku.today> )

[Samurai Sudoku](https://samuraisudoku.com) ( <https://samuraisudoku.com> )

[Newdoku](https://newdoku.com) ( <https://newdoku.com> )

[Sudoku Puzzle](https://www.sudokupuzzle.org) ( <https://www.sudokupuzzle.org> )

# Neighbourship Sudoku

Place a digit from 1 to 9 into each of the empty squares so that each digit appears exactly once in each of the rows, columns and the nine outlined 3x3 regions.

A number in a squared cell indicates how many different numbers the four diagonally adjacent cells contain. A number in a circled cell indicates how many different numbers the eight orthogonally and diagonally adjacent cells contain.



(Solution)

		○						
7		1		□		2		
	□	8	○		○		9	○
		2	□					
	3	6		7			○	2
	7				2		□	
9			2			□	○	
		□	○	1	○			
	6			○				

© sudoku.today

[Sudoku Today](https://sudoku.today) ( <https://sudoku.today> )

[Samurai Sudoku](https://samuraisudoku.com) ( <https://samuraisudoku.com> )

[Newdoku](https://newdoku.com) ( <https://newdoku.com> )

[Sudoku Puzzle](https://www.sudokupuzzle.org) ( <https://www.sudokupuzzle.org> )

## Give me Five Sudoku

Place a digit from 1 to 9 into each of the empty squares so that each digit appears exactly once in each of the rows, columns and the nine outlined 3x3 regions.

Sum and difference of two orthogonally adjacent numbers must not be 5.



(Solution)

		8				5		
							8	
	5						9	
2				5			6	
9			6					
	4				3			
		9			4			
5						9	3	
	7		3				1	

© sudoku.today

[Sudoku Today](https://sudoku.today) ( <https://sudoku.today> )

[Samurai Sudoku](https://samuraisudoku.com) ( <https://samuraisudoku.com> )

[Newdoku](https://newdoku.com) ( <https://newdoku.com> )

[Sudoku Puzzle](https://www.sudokupuzzle.org) ( <https://www.sudokupuzzle.org> )

## Count different Sudoku

Place a digit from 1 to 9 into each of the empty squares so that each digit appears exactly once in each of the rows, columns and the nine outlined 3x3 regions.

Arrows and numbers outside gridding means how many different numbers in corresponding direction grid.



(Solution)

The grid is a 9x9 grid with 3x3 regions outlined. The numbers in the grid are as follows:

					1			
		9				4		7
4	6	1		5			2	
1							4	2
	8		6		2		9	
9	2							1
	1			9		2	7	6
6		2				9		
			2					

Arrows and numbers outside the grid indicate the count of different numbers in that direction:

- Top: 4 (row 1, col 4), 5 (row 1, col 5), 5 (row 1, col 6)
- Left: 6 (row 3, col 1), 4 (row 4, col 1), 3 (row 5, col 1)
- Right: 3 (row 5, col 9), 5 (row 6, col 9), 6 (row 7, col 9)
- Bottom: 5 (row 9, col 4), 5 (row 9, col 5), 4 (row 9, col 6)

© sudoku.today

[Sudoku Today](https://sudoku.today) ( <https://sudoku.today> )

[Samurai Sudoku](https://samuraisudoku.com) ( <https://samuraisudoku.com> )

[Newdoku](https://newdoku.com) ( <https://newdoku.com> )

[Sudoku Puzzle](https://www.sudokupuzzle.org) ( <https://www.sudokupuzzle.org> )

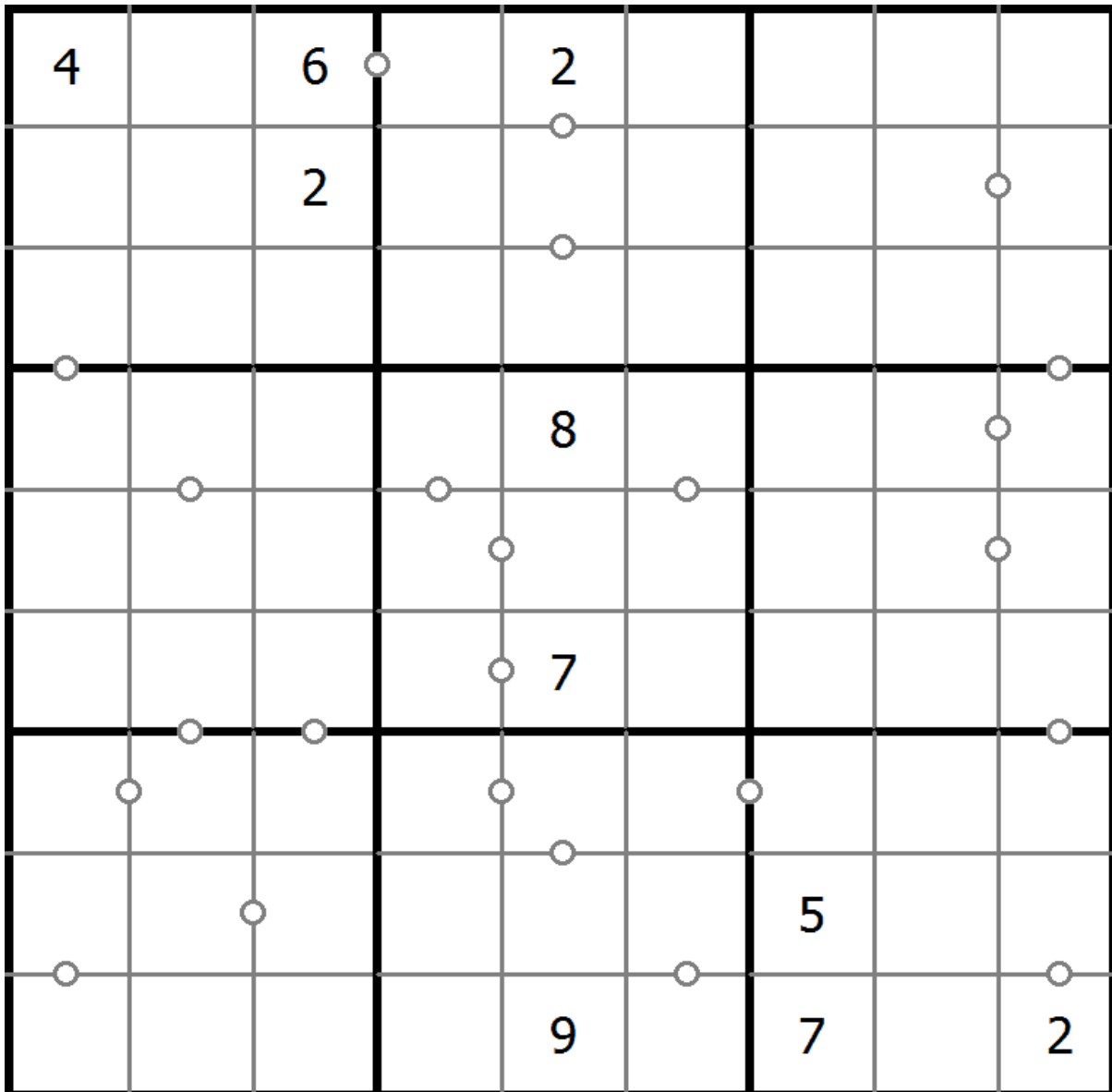
## Consecutive Sudoku

Place a digit from 1 to 9 into each of the empty squares so that each digit appears exactly once in each of the rows, columns and the nine outlined 3x3 regions.

There are some dots between cells. The numbers on each side of a dot must always be consecutive. All possible dots are marked.



(Solution)



© sudoku.today

[Sudoku Today](https://sudoku.today) ( <https://sudoku.today> )

[Samurai Sudoku](https://samuraisudoku.com) ( <https://samuraisudoku.com> )

[Newdoku](https://newdoku.com) ( <https://newdoku.com> )

[Sudoku Puzzle](https://www.sudokupuzzle.org) ( <https://www.sudokupuzzle.org> )

# Exclude Sudoku

Place a digit from 1 to 9 into each of the empty squares so that each digit appears exactly once in each of the rows, columns and the nine outlined 3x3 regions.

Numbers in the red circle are not allowed appears in four squares which is nearby the intersection of row and column red circles.



(Solution)

4	3	1	1	1	4	2	3
3	1	2	2	6	1	1	1
1	2	3	3	6	4	1	1
1	7	1			2	1	2
3	6	1			1	5	3
8	2	1	3	2	4	1	7
1	1	1	4	3	1	3	4
6	2	9	4	3	8	2	3

© sudoku.today

[Sudoku Today](https://sudoku.today) ( https://sudoku.today )  
[Samurai Sudoku](https://samuraisudoku.com) ( https://samuraisudoku.com )

[Newdoku](https://newdoku.com) ( https://newdoku.com )  
[Sudoku Puzzle](https://www.sudokupuzzle.org) ( https://www.sudokupuzzle.org )



### Hybrid Sudoku ( Greater Than + Sum Frame )

Place a digit from 1 to 9 into each of the empty squares so that each digit appears exactly once in each of the rows, columns and the nine outlined 3x3 regions.

Digits have to be place in accordance with the “greater than” signs.

Digits outside the grid indicate the sum of the first 3 digits in the corresponding direction.



(Solution)

	14		17		14			17	
	1					<			
14			9						13
20				5				8	12
11	v	2		1		4			
			v					^	^
	v		<						
				6		5		2	8
	4			9			>		
					6		>		8
15			^		v			v	
					<			9	16
	21				13				

© sudoku.today

[Sudoku Today](https://sudoku.today) ( https://sudoku.today )  
[Samurai Sudoku](https://samuraisudoku.com) ( https://samuraisudoku.com )

[Newdoku](https://newdoku.com) ( https://newdoku.com )  
[Sudoku Puzzle](https://www.sudokupuzzle.org) ( https://www.sudokupuzzle.org )

## Edge Difference Sudoku

Place a digit from 1 to 9 into each of the empty squares so that each digit appears exactly once in each of the rows, columns and the nine outlined 3x3 regions.

A number at the edge of the diagram indicates the difference between the first and the last number in the corresponding row or column.



(Solution)

	5	4	2	7	5	7	2	4	2
3									
5									7
2		5				7		4	
1									
1			7	4					
5									
3		9					1		
2							3		
4				1					

© sudoku.today

[Sudoku Today](https://sudoku.today) ( <https://sudoku.today> )

[Samurai Sudoku](https://samuraisudoku.com) ( <https://samuraisudoku.com> )

[Newdoku](https://newdoku.com) ( <https://newdoku.com> )

[Sudoku Puzzle](https://www.sudokupuzzle.org) ( <https://www.sudokupuzzle.org> )

### Hybrid Sudoku ( X Sums + Consecutive )

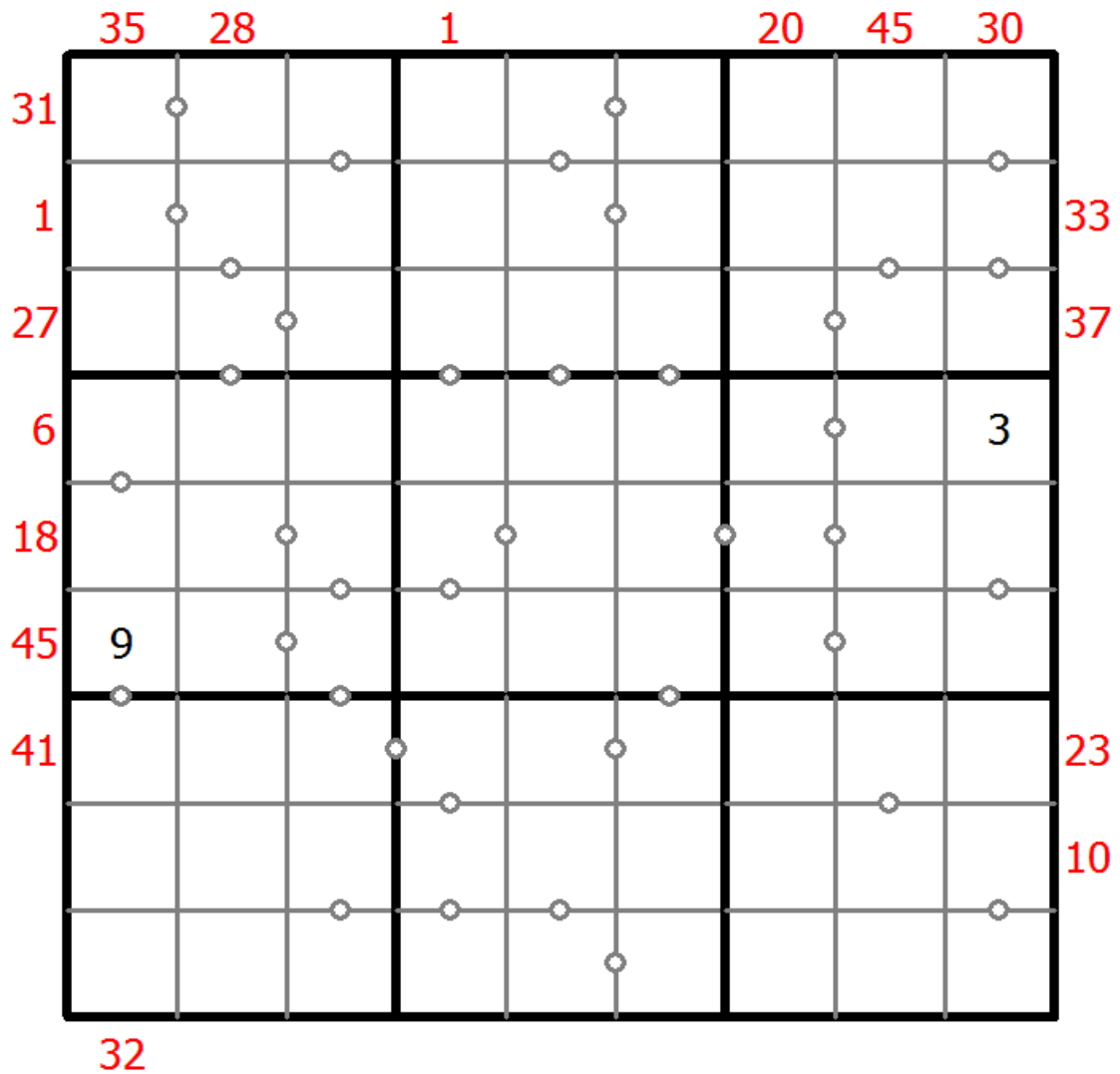
Place a digit from 1 to 9 into each of the empty squares so that each digit appears exactly once in each of the rows, columns and the nine outlined 3x3 regions.

Each number outside the grid is the sum of the first X numbers placed in the corresponding direction, where X is equal to the first number placed in that direction.

There are some dots between cells. The numbers on each side of a dot must always be consecutive. All possible dots are marked.



(Solution)



© sudoku.today

[Sudoku Today](https://sudoku.today) ( <https://sudoku.today> )

[Samurai Sudoku](https://samuraisudoku.com) ( <https://samuraisudoku.com> )

[Newdoku](https://newdoku.com) ( <https://newdoku.com> )

[Sudoku Puzzle](https://www.sudokupuzzle.org) ( <https://www.sudokupuzzle.org> )

## Clone Sudoku

Place a digit from 1 to 9 into each of the empty squares so that each digit appears exactly once in each of the rows, columns and the nine outlined 3x3 regions.

Grey cells in the grid represent many cloned areas. Digits in these areas on corresponding positions must be identical. Cloned areas are only moved, without rotation or reflection.



(Solution)

				3				
						6		1
		1		9	4			
						7	1	
	3	7						
			8	5		4		
5		3						
				4				

© sudoku.today

[Sudoku Today](https://sudoku.today) ( <https://sudoku.today> )

[Samurai Sudoku](https://samuraisudoku.com) ( <https://samuraisudoku.com> )

[Newdoku](https://newdoku.com) ( <https://newdoku.com> )

[Sudoku Puzzle](https://www.sudokupuzzle.org) ( <https://www.sudokupuzzle.org> )

## Classic Sudoku

Place a digit from 1 to 9 into each of the empty squares so that each digit appears exactly once in each of the rows, columns and the nine outlined 3x3 regions.



(Solution)

4						5		8
					6		4	
	7	8			1			
		6	8					
1	8						7	5
					3	8		
			2			7	1	
	5		9					
7		1						2

© sudoku.today

[Sudoku Today](https://sudoku.today) ( <https://sudoku.today> )

[Samurai Sudoku](https://samuraisudoku.com) ( <https://samuraisudoku.com> )

[Newdoku](https://newdoku.com) ( <https://newdoku.com> )

[Sudoku Puzzle](https://www.sudokupuzzle.org) ( <https://www.sudokupuzzle.org> )

## Classic Sudoku

Place a digit from 1 to 9 into each of the empty squares so that each digit appears exactly once in each of the rows, columns and the nine outlined 3x3 regions.



(Solution)

		2	1					
9					4	7		
		3			2			
4						6		3
		6	3	8	9	4		
3		7						8
			4			9		
		1	8					5
					7	2		

© sudoku.today

[Sudoku Today](https://sudoku.today) ( <https://sudoku.today> )

[Samurai Sudoku](https://samuraisudoku.com) ( <https://samuraisudoku.com> )

[Newdoku](https://newdoku.com) ( <https://newdoku.com> )

[Sudoku Puzzle](https://www.sudokupuzzle.org) ( <https://www.sudokupuzzle.org> )

## Classic Sudoku

Place a digit from 1 to 9 into each of the empty squares so that each digit appears exactly once in each of the rows, columns and the nine outlined 3x3 regions.



(Solution)

5			8					
								2
		1	6	5		7		3
	8	5	1				6	
1								5
	6				4	1	3	
7		4		1	6	8		
2								
					2			1

© sudoku.today

[Sudoku Today](https://sudoku.today) ( <https://sudoku.today> )

[Samurai Sudoku](https://samuraisudoku.com) ( <https://samuraisudoku.com> )

[Newdoku](https://newdoku.com) ( <https://newdoku.com> )

[Sudoku Puzzle](https://www.sudokupuzzle.org) ( <https://www.sudokupuzzle.org> )

## Classic Sudoku

Place a digit from 1 to 9 into each of the empty squares so that each digit appears exactly once in each of the rows, columns and the nine outlined 3x3 regions.



(Solution)

			2	3				
9			6				4	
		8		1				2
8						2	7	
			7		3			
	2	9						4
5				6		3		
	1				9			5
				5	2			

© sudoku.today

[Sudoku Today](https://sudoku.today) ( <https://sudoku.today> )

[Samurai Sudoku](https://samuraisudoku.com) ( <https://samuraisudoku.com> )

[Newdoku](https://newdoku.com) ( <https://newdoku.com> )

[Sudoku Puzzle](https://www.sudokupuzzle.org) ( <https://www.sudokupuzzle.org> )



## Classic Sudoku

Place a digit from 1 to 9 into each of the empty squares so that each digit appears exactly once in each of the rows, columns and the nine outlined 3x3 regions.



(Solution)

5					3	6		
			6	7				1
	4	7			9			
						2	4	
	1			6			8	
	5	4						
			2			5	9	
2				1	4			
		8	7					3

© sudoku.today

[Sudoku Today](https://sudoku.today) ( <https://sudoku.today> )

[Samurai Sudoku](https://samuraisudoku.com) ( <https://samuraisudoku.com> )

[Newdoku](https://newdoku.com) ( <https://newdoku.com> )

[Sudoku Puzzle](https://www.sudokupuzzle.org) ( <https://www.sudokupuzzle.org> )

## Classic Sudoku

Place a digit from 1 to 9 into each of the empty squares so that each digit appears exactly once in each of the rows, columns and the nine outlined 3x3 regions.



(Solution)

		9		4				
					8		6	
3						5		2
9				2			1	
4		8				3		5
	3			1				8
2		7						3
	6		5					
				9		8		

© sudoku.today

[Sudoku Today](https://sudoku.today) ( <https://sudoku.today> )

[Samurai Sudoku](https://samuraisudoku.com) ( <https://samuraisudoku.com> )

[Newdoku](https://newdoku.com) ( <https://newdoku.com> )

[Sudoku Puzzle](https://www.sudokupuzzle.org) ( <https://www.sudokupuzzle.org> )

## Classic Sudoku

Place a digit from 1 to 9 into each of the empty squares so that each digit appears exactly once in each of the rows, columns and the nine outlined 3x3 regions.



(Solution)

5						6		
			8	5				3
		1	9					
7							1	4
	6		4		7		5	
4	1							2
					9	8		
6				2	4			
		4						9

© sudoku.today

[Sudoku Today](https://sudoku.today) ( <https://sudoku.today> )

[Samurai Sudoku](https://samuraisudoku.com) ( <https://samuraisudoku.com> )

[Newdoku](https://newdoku.com) ( <https://newdoku.com> )

[Sudoku Puzzle](https://www.sudokupuzzle.org) ( <https://www.sudokupuzzle.org> )

## Classic Sudoku

Place a digit from 1 to 9 into each of the empty squares so that each digit appears exactly once in each of the rows, columns and the nine outlined 3x3 regions.



(Solution)

			8			9		
	3		1					8
						6	1	
	2	9			8	7	4	
4				3				1
	1	6	4			2	5	
	7	3						
9					1		8	
		5			6			

© sudoku.today

[Sudoku Today](https://sudoku.today) ( <https://sudoku.today> )

[Samurai Sudoku](https://samuraisudoku.com) ( <https://samuraisudoku.com> )

[Newdoku](https://newdoku.com) ( <https://newdoku.com> )

[Sudoku Puzzle](https://www.sudokupuzzle.org) ( <https://www.sudokupuzzle.org> )

## Classic Sudoku

Place a digit from 1 to 9 into each of the empty squares so that each digit appears exactly once in each of the rows, columns and the nine outlined 3x3 regions.



(Solution)

1					3	4		6
	8	3	2					
		4		6		2		
3	6				7			
	7						8	
			1				9	2
		8		9		3		
					5	8	2	
4		6	3					5

© sudoku.today

[Sudoku Today](https://sudoku.today) ( <https://sudoku.today> )

[Samurai Sudoku](https://samuraisudoku.com) ( <https://samuraisudoku.com> )

[Newdoku](https://newdoku.com) ( <https://newdoku.com> )

[Sudoku Puzzle](https://www.sudokupuzzle.org) ( <https://www.sudokupuzzle.org> )

## Classic Sudoku

Place a digit from 1 to 9 into each of the empty squares so that each digit appears exactly once in each of the rows, columns and the nine outlined 3x3 regions.



(Solution)

				2			4	
2		1	8	9				
			6				7	
	5	4					2	
3								9
	1					4	3	
	2				5			
				1	9	7		4
	6			7				

© sudoku.today

[Sudoku Today](https://sudoku.today) ( <https://sudoku.today> )

[Samurai Sudoku](https://samuraisudoku.com) ( <https://samuraisudoku.com> )

[Newdoku](https://newdoku.com) ( <https://newdoku.com> )

[Sudoku Puzzle](https://www.sudokupuzzle.org) ( <https://www.sudokupuzzle.org> )

## Classic Sudoku

Place a digit from 1 to 9 into each of the empty squares so that each digit appears exactly once in each of the rows, columns and the nine outlined 3x3 regions.



(Solution)

6			1				5	7
	3	4				9		
5				7	1	4	2	
	7	1	4	8				6
		2				3	9	
9	6				5			8

© sudoku.today

[Sudoku Today](https://sudoku.today) ( <https://sudoku.today> )

[Samurai Sudoku](https://samuraisudoku.com) ( <https://samuraisudoku.com> )

[Newdoku](https://newdoku.com) ( <https://newdoku.com> )

[Sudoku Puzzle](https://www.sudokupuzzle.org) ( <https://www.sudokupuzzle.org> )

## Classic Sudoku

Place a digit from 1 to 9 into each of the empty squares so that each digit appears exactly once in each of the rows, columns and the nine outlined 3x3 regions.



(Solution)

		4			6			
		9	1				5	2
7			4					1
						1		7
			7	3	4			
8		2						
9					1			3
1	5				3	9		
			5			8		

© sudoku.today

[Sudoku Today](https://sudoku.today) ( <https://sudoku.today> )

[Samurai Sudoku](https://samuraisudoku.com) ( <https://samuraisudoku.com> )

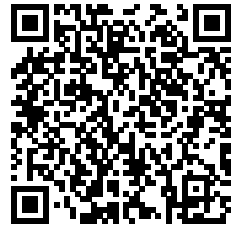
[Newdoku](https://newdoku.com) ( <https://newdoku.com> )

[Sudoku Puzzle](https://www.sudokupuzzle.org) ( <https://www.sudokupuzzle.org> )



## Classic Sudoku

Place a digit from 1 to 9 into each of the empty squares so that each digit appears exactly once in each of the rows, columns and the nine outlined 3x3 regions.



(Solution)

2		8	7	6				
1		9						2
		3					4	
	6		1		5			
			4		7		1	
	9					3		
5						2		4
				2	8	9		5

© sudoku.today

[Sudoku Today](https://sudoku.today) ( <https://sudoku.today> )

[Samurai Sudoku](https://samuraisudoku.com) ( <https://samuraisudoku.com> )

[Newdoku](https://newdoku.com) ( <https://newdoku.com> )

[Sudoku Puzzle](https://www.sudokupuzzle.org) ( <https://www.sudokupuzzle.org> )

## Classic Sudoku

Place a digit from 1 to 9 into each of the empty squares so that each digit appears exactly once in each of the rows, columns and the nine outlined 3x3 regions.



(Solution)

		9						3
			4			9		8
				5		1	7	
7								6
	2		8		5		9	
3								4
	8	3		4				
6		7			3			
4						8		

© sudoku.today

[Sudoku Today](https://sudoku.today) ( <https://sudoku.today> )

[Samurai Sudoku](https://samuraisudoku.com) ( <https://samuraisudoku.com> )

[Newdoku](https://newdoku.com) ( <https://newdoku.com> )

[Sudoku Puzzle](https://www.sudokupuzzle.org) ( <https://www.sudokupuzzle.org> )

## Classic Sudoku

Place a digit from 1 to 9 into each of the empty squares so that each digit appears exactly once in each of the rows, columns and the nine outlined 3x3 regions.



(Solution)

	2	4					9	
		3			6			
7					9	1	4	
	6		9	5				
			3		7			
				2	4		5	
	8	7	5					9
			1			4		
	1					2	6	

© sudoku.today

[Sudoku Today](https://sudoku.today) ( <https://sudoku.today> )

[Samurai Sudoku](https://samuraisudoku.com) ( <https://samuraisudoku.com> )

[Newdoku](https://newdoku.com) ( <https://newdoku.com> )

[Sudoku Puzzle](https://www.sudokupuzzle.org) ( <https://www.sudokupuzzle.org> )

## Classic Sudoku

Place a digit from 1 to 9 into each of the empty squares so that each digit appears exactly once in each of the rows, columns and the nine outlined 3x3 regions.



(Solution)

1			4		8			
				1		5		
5		6				3		
	8		7				1	
4								3
	6				9		2	
		4				2		9
		1		6				
			8		5			7

© sudoku.today

[Sudoku Today](https://sudoku.today) ( <https://sudoku.today> )

[Samurai Sudoku](https://samuraisudoku.com) ( <https://samuraisudoku.com> )

[Newdoku](https://newdoku.com) ( <https://newdoku.com> )

[Sudoku Puzzle](https://www.sudokupuzzle.org) ( <https://www.sudokupuzzle.org> )

## Classic Sudoku

Place a digit from 1 to 9 into each of the empty squares so that each digit appears exactly once in each of the rows, columns and the nine outlined 3x3 regions.



(Solution)

		6						
	5		1			8		
2			9			6		4
1					5		6	3
				7				
8	9		4					1
9		8			4			6
		3			8		5	
						7		

© sudoku.today

[Sudoku Today](https://sudoku.today) ( <https://sudoku.today> )

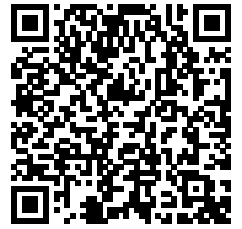
[Samurai Sudoku](https://samuraisudoku.com) ( <https://samuraisudoku.com> )

[Newdoku](https://newdoku.com) ( <https://newdoku.com> )

[Sudoku Puzzle](https://www.sudokupuzzle.org) ( <https://www.sudokupuzzle.org> )

## Classic Sudoku

Place a digit from 1 to 9 into each of the empty squares so that each digit appears exactly once in each of the rows, columns and the nine outlined 3x3 regions.



(Solution)

			9		1			
		2		6			7	8
						3		
	9						8	4
	7		4		2		5	
5	2						3	
		7						
6	3			4		1		
			5		8			

© sudoku.today

[Sudoku Today](https://sudoku.today) ( <https://sudoku.today> )

[Samurai Sudoku](https://samuraisudoku.com) ( <https://samuraisudoku.com> )

[Newdoku](https://newdoku.com) ( <https://newdoku.com> )

[Sudoku Puzzle](https://www.sudokupuzzle.org) ( <https://www.sudokupuzzle.org> )

## Classic Sudoku

Place a digit from 1 to 9 into each of the empty squares so that each digit appears exactly once in each of the rows, columns and the nine outlined 3x3 regions.



(Solution)

		3	4	5				
						3	8	
7	9							2
					5		4	
9	2			4			1	3
	8		2					
4							6	9
	3	1						
				8	1	5		

© sudoku.today

[Sudoku Today](https://sudoku.today) ( <https://sudoku.today> )

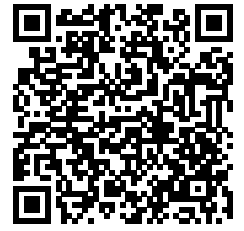
[Samurai Sudoku](https://samuraisudoku.com) ( <https://samuraisudoku.com> )

[Newdoku](https://newdoku.com) ( <https://newdoku.com> )

[Sudoku Puzzle](https://www.sudokupuzzle.org) ( <https://www.sudokupuzzle.org> )

## Classic Sudoku

Place a digit from 1 to 9 into each of the empty squares so that each digit appears exactly once in each of the rows, columns and the nine outlined 3x3 regions.



(Solution)

			9	8		3		
					3	1		
9				5		2		8
			4		1			3
	6			7			2	
4			6		9			
3		4		1				9
		6	5					
		9		4	7			

© sudoku.today

[Sudoku Today](https://sudoku.today) ( <https://sudoku.today> )

[Samurai Sudoku](https://samuraisudoku.com) ( <https://samuraisudoku.com> )

[Newdoku](https://newdoku.com) ( <https://newdoku.com> )

[Sudoku Puzzle](https://www.sudokupuzzle.org) ( <https://www.sudokupuzzle.org> )