

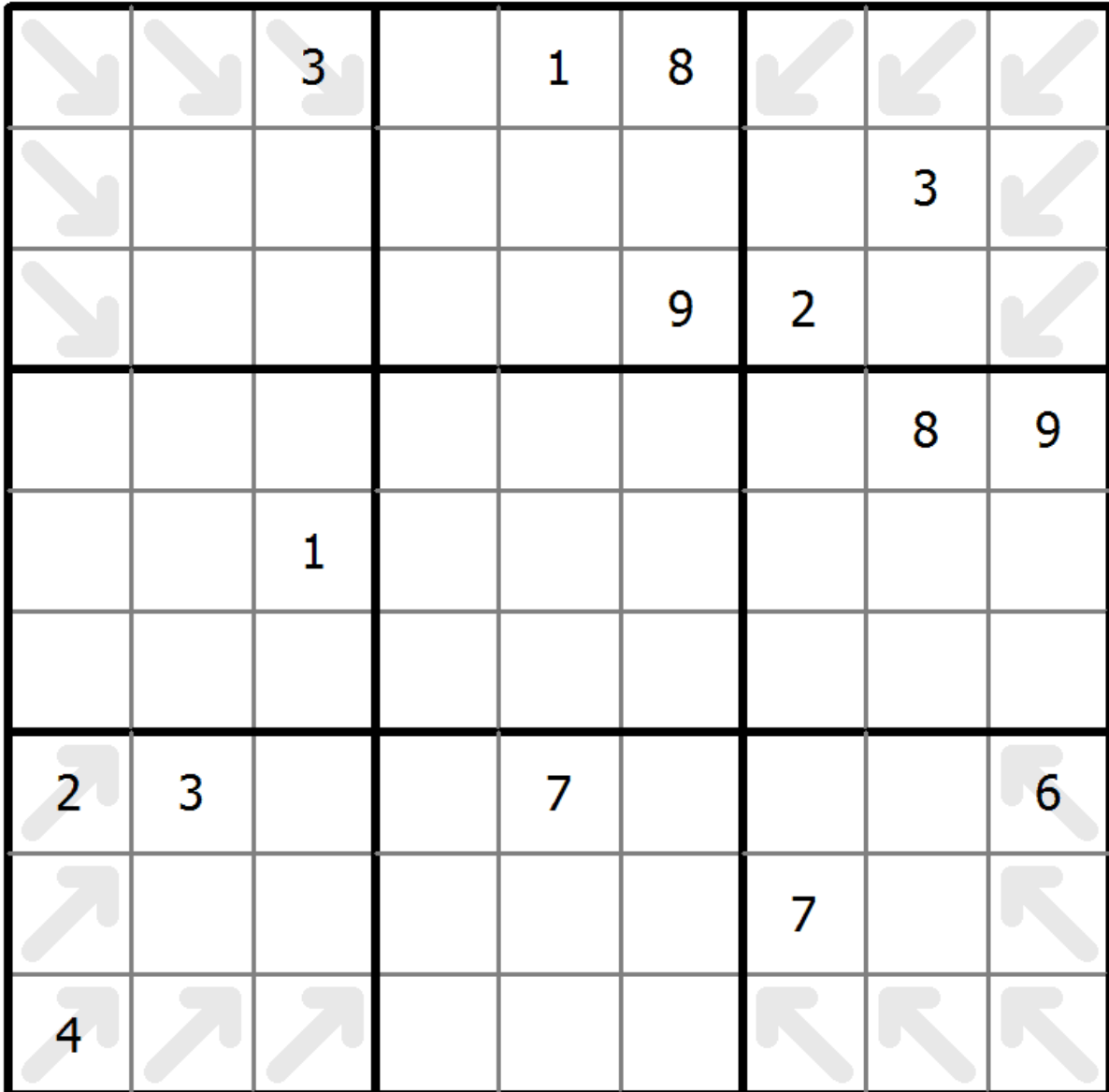
## Eliminate Sudoku

Place a digit from 1 to 9 into each of the empty squares so that each digit appears exactly once in each of the rows, columns and the nine outlined 3x3 regions.

The number in a cell with an arrow must not be repeated in a cell the arrow points to.



(Solution)



© sudoku.today

[Sudoku Today](https://sudoku.today) ( <https://sudoku.today> )

[Samurai Sudoku](https://samuraisudoku.com) ( <https://samuraisudoku.com> )

[Newdoku](https://newdoku.com) ( <https://newdoku.com> )

[Sudoku Puzzle](https://www.sudokupuzzle.org) ( <https://www.sudokupuzzle.org> )

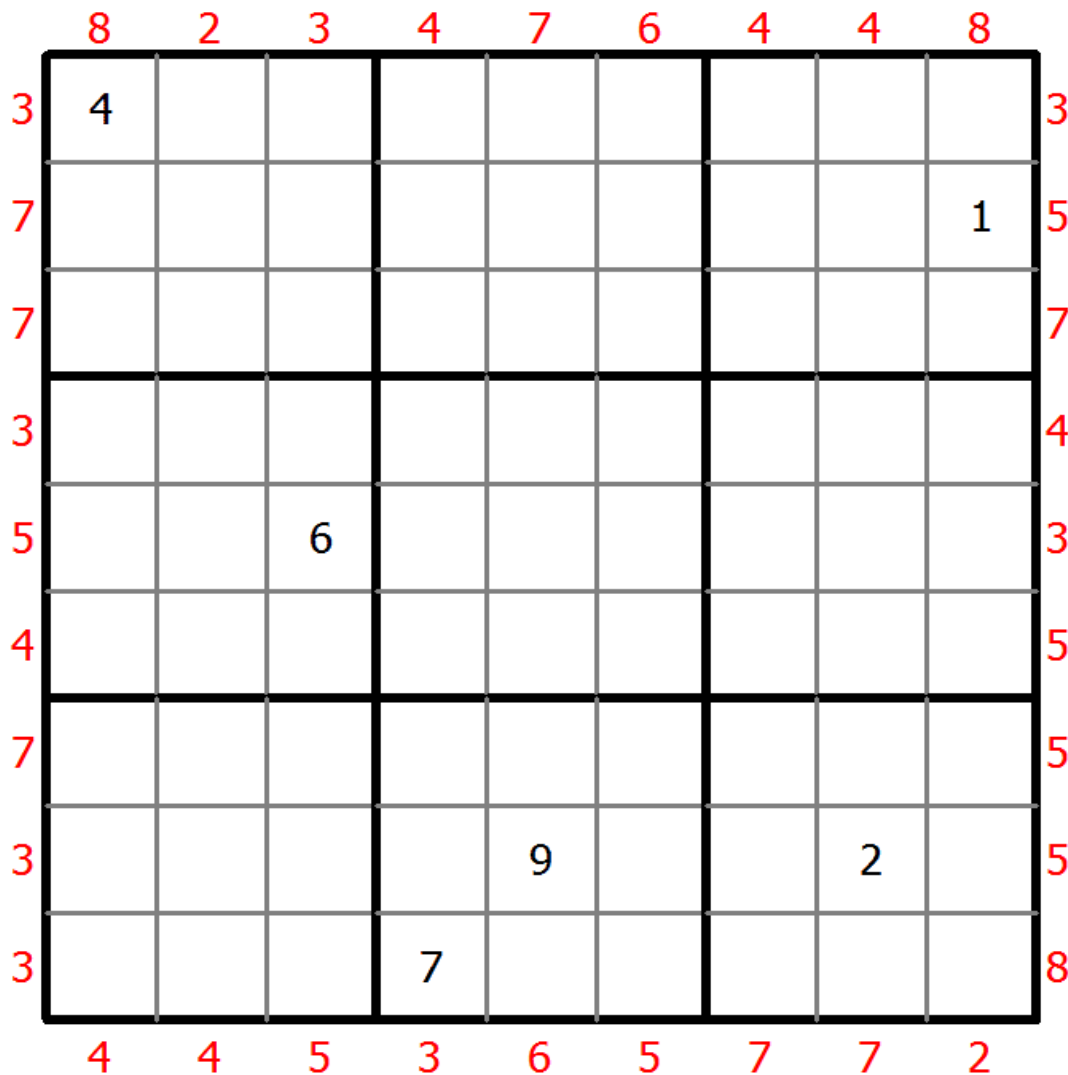
## Maximin Sudoku

Place a digit from 1 to 9 into each of the empty squares so that each digit appears exactly once in each of the rows, columns and the nine outlined 3x3 regions.

A number at the edge of the diagram indicates the difference between the highest and the lowest number in the first three cells in the corresponding row or column.



(Solution)



© sudoku.today

[Sudoku Today](https://sudoku.today) ( <https://sudoku.today> )

[Samurai Sudoku](https://samuraisudoku.com) ( <https://samuraisudoku.com> )

[Newdoku](https://newdoku.com) ( <https://newdoku.com> )

[Sudoku Puzzle](https://www.sudokupuzzle.org) ( <https://www.sudokupuzzle.org> )

# Search 9 Sudoku

Place a digit from 1 to 9 into each of the empty squares so that each digit appears exactly once in each of the rows, columns and the nine outlined 3x3 regions.

The number in a cell with an arrow indicates the distance to the cell with the number 9 in the direction the arrow points to.



(Solution)

→	→	→			6			↓
					4			↓
					2		3	↓
		→						
		4					8	
			1			←		2
↑								
↑	3							
↑						←	←	←

© sudoku.today

[Sudoku Today](https://sudoku.today) ( https://sudoku.today )  
[Samurai Sudoku](https://samuraisudoku.com) ( https://samuraisudoku.com )

[Newdoku](https://newdoku.com) ( https://newdoku.com )  
[Sudoku Puzzle](https://www.sudokupuzzle.org) ( https://www.sudokupuzzle.org )

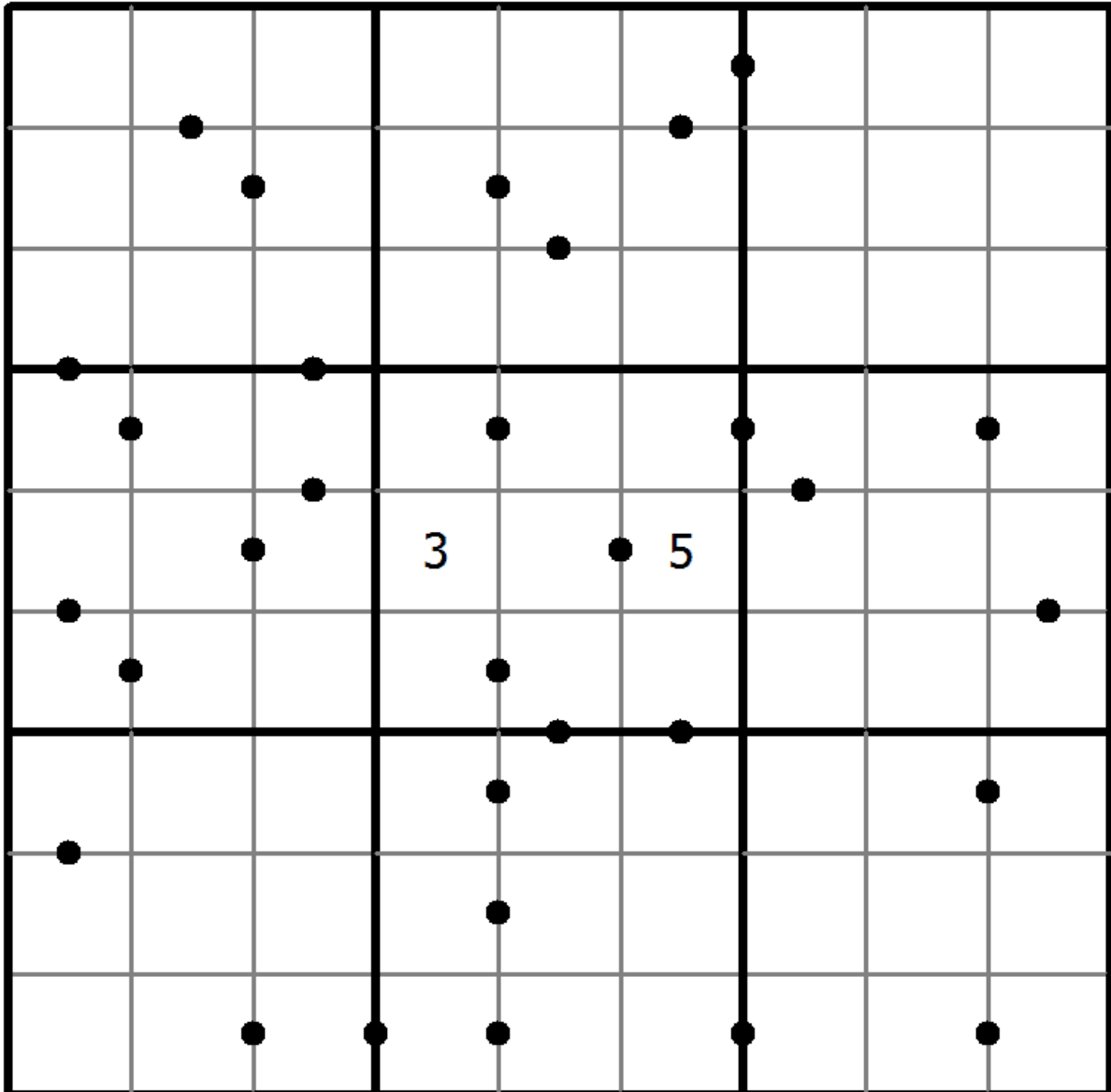
## Ten-Eleven Sudoku

Place a digit from 1 to 9 into each of the empty squares so that each digit appears exactly once in each of the rows, columns and the nine outlined 3x3 regions.

A dot between two cells indicates that the sum of the numbers in these cells is 10 or 11. If no dot between two cells the sum of the numbers in these cells must not be 10 or 11.



(Solution)



© sudoku.today

[Sudoku Today](https://sudoku.today) ( <https://sudoku.today> )

[Samurai Sudoku](https://samuraisudoku.com) ( <https://samuraisudoku.com> )

[Newdoku](https://newdoku.com) ( <https://newdoku.com> )

[Sudoku Puzzle](https://www.sudokupuzzle.org) ( <https://www.sudokupuzzle.org> )

# XV Sudoku

Place a digit from 1 to 9 into each of the empty squares so that each digit appears exactly once in each of the rows, columns and the nine outlined 3x3 regions.

Adjacent cells with digits summing to 5 are marked by V, while those summing to 10 are marked by X. All possible V and X are marked.



(Solution)

	X	V						
			5			X		
							X	V
			X			X	7	
							X	
						X		X
		V	X				V	
		3				X	X	
	X							
			X			6		X
			V		X			
			X			V	X	

© sudoku.today

[Sudoku Today](https://sudoku.today) ( https://sudoku.today )  
[Samurai Sudoku](https://samuraisudoku.com) ( https://samuraisudoku.com )

[Newdoku](https://newdoku.com) ( https://newdoku.com )  
[Sudoku Puzzle](https://www.sudokupuzzle.org) ( https://www.sudokupuzzle.org )

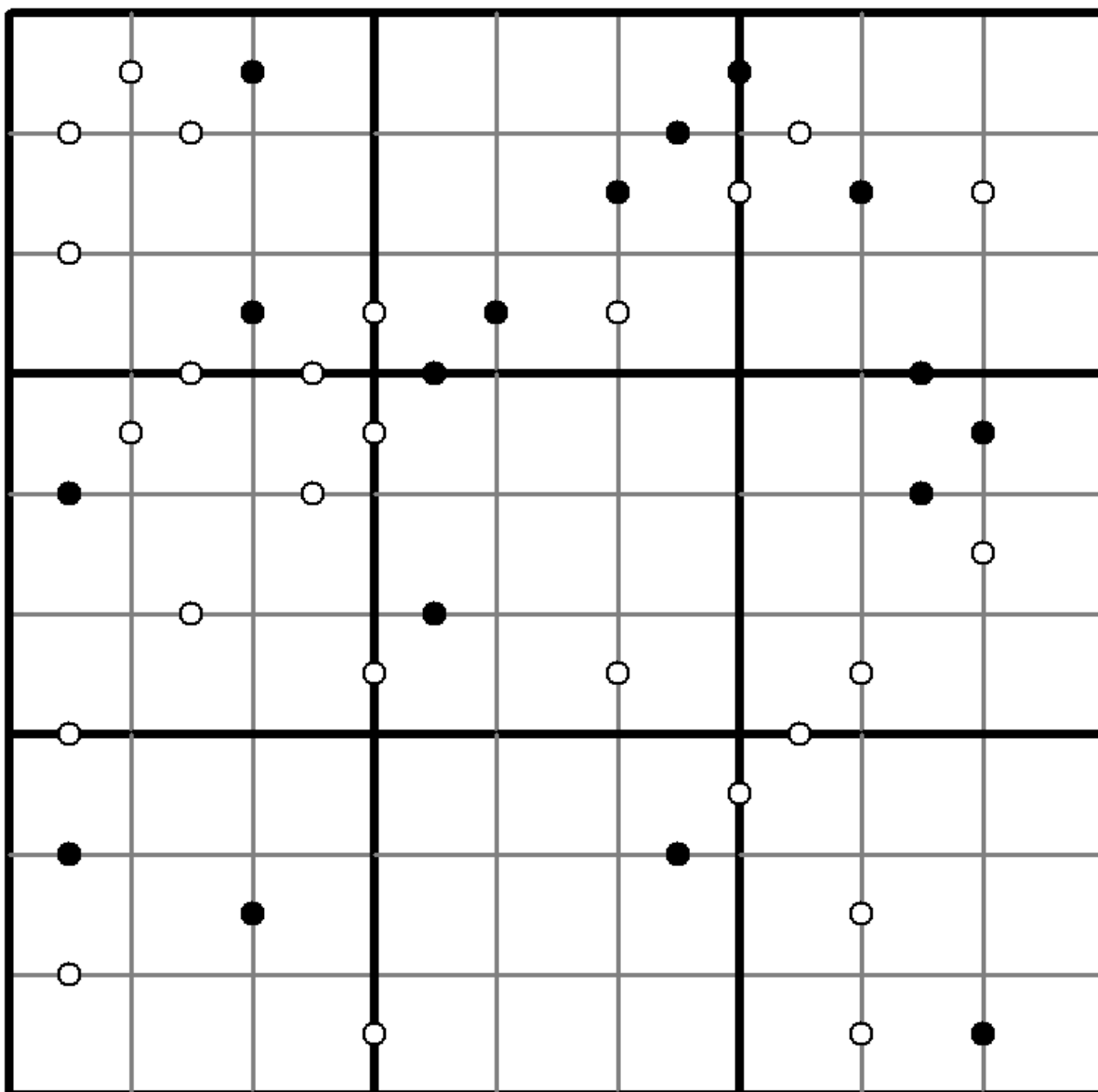
## Kropki Sudoku

Place a digit from 1 to 9 into each of the empty squares so that each digit appears exactly once in each of the rows, columns and the nine outlined 3x3 regions.

If absolute difference between two digits in neighbouring cells equals 1, then they are separated by a white dot. If the digit is a half of digit in the neighbouring cell, then they are separated by black dot. The dot between 1 and 2 can be either white or black.



(Solution)



© sudoku.today

[Sudoku Today](https://sudoku.today) ( <https://sudoku.today> )

[Samurai Sudoku](https://samuraisudoku.com) ( <https://samuraisudoku.com> )

[Newdoku](https://newdoku.com) ( <https://newdoku.com> )

[Sudoku Puzzle](https://www.sudokupuzzle.org) ( <https://www.sudokupuzzle.org> )

# Mathrax Sudoku

Place a digit from 1 to 9 into each of the empty squares so that each digit appears exactly once in each of the rows, columns and the nine outlined 3x3 regions.

Some intersections of the grid lines are marked by a number and an operator (+, -, x, /) in a circle. The number is the result of the operation, applied to both pairs of diagonally opposite cells. An E in the circle indicates that all four adjacent digits are even, while an O indicates that all four adjacent digits are odd.



(Solution)

	8							9
					5			
		9+					2/	
			O					
					6			3
	9		8					
			9				7	6
						E		
				7				1
		12x					1-	

© sudoku.today

[Sudoku Today](https://sudoku.today) ( <https://sudoku.today> )  
[Samurai Sudoku](https://samuraisudoku.com) ( <https://samuraisudoku.com> )

[Newdoku](https://newdoku.com) ( <https://newdoku.com> )  
[Sudoku Puzzle](https://www.sudokupuzzle.org) ( <https://www.sudokupuzzle.org> )

## XV Sudoku

Place a digit from 1 to 9 into each of the empty squares so that each digit appears exactly once in each of the rows, columns and the nine outlined 3x3 regions.

Adjacent cells with digits summing to 5 are marked by V, while those summing to 10 are marked by X. Not all possible V and X are marked.



(Solution)

				3				6
	5	2		9			V	8
	7	4			2	1		
V							X	
		5	X	3		2	7	
6				X	X			V
				X	2	4	5	X
			V					
4				1				

© sudoku.today

[Sudoku Today](https://sudoku.today) ( <https://sudoku.today> )

[Samurai Sudoku](https://samuraisudoku.com) ( <https://samuraisudoku.com> )

[Newdoku](https://newdoku.com) ( <https://newdoku.com> )

[Sudoku Puzzle](https://www.sudokupuzzle.org) ( <https://www.sudokupuzzle.org> )



## Duodoku

Follow classic sudoku rules. This puzzle consists of two overlapping grids of classic sudoku.



(Solution)

		7		1				
		4	5		6	3		1
		2					3	
		8						
	7				5			
	4		9	8			6	
		9						
		3	7	6	2		9	

© sudoku.today

[Sudoku Today](https://sudoku.today) ( <https://sudoku.today> )

[Samurai Sudoku](https://samuraisudoku.com) ( <https://samuraisudoku.com> )

[Newdoku](https://newdoku.com) ( <https://newdoku.com> )

[Sudoku Puzzle](https://www.sudokupuzzle.org) ( <https://www.sudokupuzzle.org> )

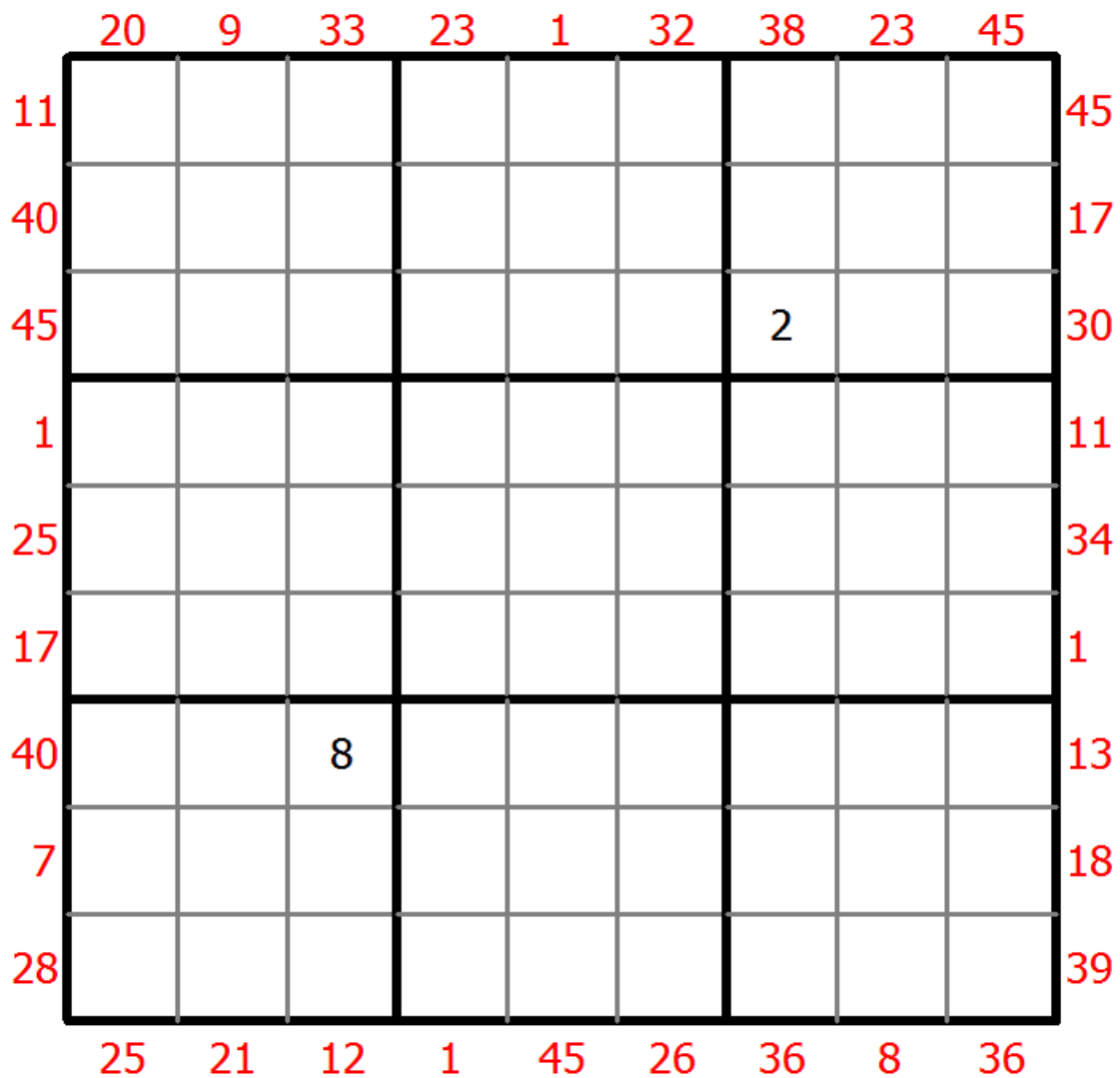
## X Sums Sudoku

Place a digit from 1 to 9 into each of the empty squares so that each digit appears exactly once in each of the rows, columns and the nine outlined 3x3 regions.

Each number outside the grid is the sum of the first X numbers placed in the corresponding direction, where X is equal to the first number placed in that direction.



(Solution)



© sudoku.today

[Sudoku Today](https://sudoku.today) ( <https://sudoku.today> )

[Samurai Sudoku](https://samuraisudoku.com) ( <https://samuraisudoku.com> )

[Newdoku](https://newdoku.com) ( <https://newdoku.com> )

[Sudoku Puzzle](https://www.sudoku-puzzle.org) ( <https://www.sudoku-puzzle.org> )

## Mathrax Sudoku

Place a digit from 1 to 9 into each of the empty squares so that each digit appears exactly once in each of the rows, columns and the nine outlined 3x3 regions.

Some intersections of the grid lines are marked by a number and an operator (+, -, x, /) in a circle. The number is the result of the operation, applied to both pairs of diagonally opposite cells. An E in the circle indicates that all four adjacent digits are even, while an O indicates that all four adjacent digits are odd.



(Solution)

								3
			9+					
		2-					E	
8								
	1			6		3		
				2/				
						7		8
			24x				O	
				1				
7								
						2	5	

© sudoku.today

[Sudoku Today](https://sudoku.today) ( <https://sudoku.today> )

[Samurai Sudoku](https://samuraisudoku.com) ( <https://samuraisudoku.com> )

[Newdoku](https://newdoku.com) ( <https://newdoku.com> )

[Sudoku Puzzle](https://www.sudokupuzzle.org) ( <https://www.sudokupuzzle.org> )

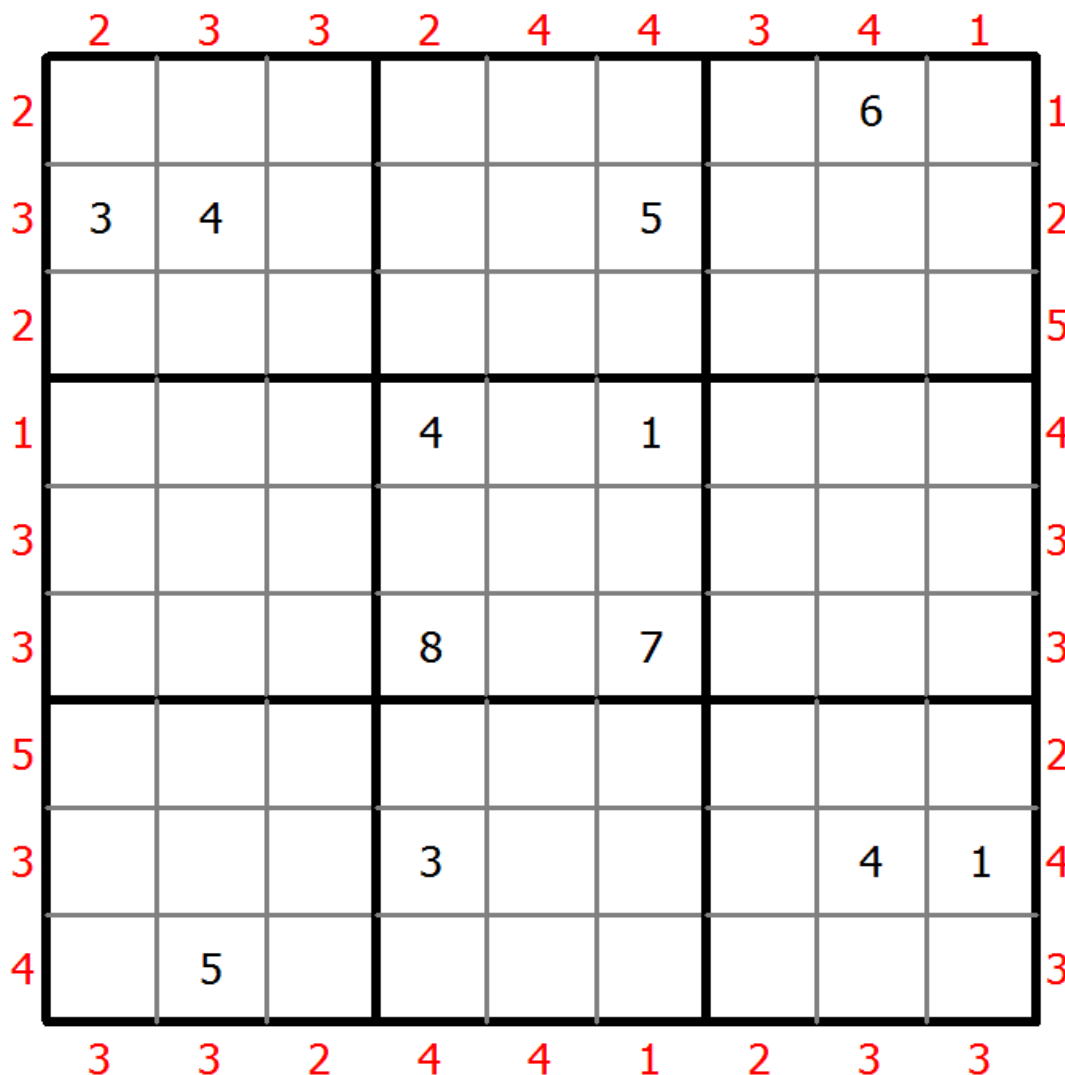
# Skyscrapers Sudoku

Place a digit from 1 to 9 into each of the empty squares so that each digit appears exactly once in each of the rows, columns and the nine outlined 3x3 regions.

Consider each number to be the height of a building. The numbers outside the grid indicate how many buildings can be seen when looking in that direction (taller buildings conceal smaller buildings behind them).



(Solution)



© sudoku.today

[Sudoku Today](https://sudoku.today) ( <https://sudoku.today> )

[Samurai Sudoku](https://samuraisudoku.com) ( <https://samuraisudoku.com> )

[Newdoku](https://newdoku.com) ( <https://newdoku.com> )

[Sudoku Puzzle](https://www.sudokupuzzle.org) ( <https://www.sudokupuzzle.org> )

# 147 Sudoku

Place a digit from 1 to 9 into each of the empty squares so that each digit appears exactly once in each of the rows, columns and the nine outlined 3x3 regions.

Cells with circles must contain digits 1-2-3, cells with squares must contain digits 4-5-6, blank cells must contains digits 7-8-9.



(Solution)

	1		○	□	□	□		○
	□	○	□	9	○	○	8	□
○	6	□		○		□	○	
○		2	□		□	□	○	
□		□		○	○	○	4	
□	○	8		○	□		○	□
	□	○	○	□			□	○
□		□	□		○	○		○
○	○		○	□			□	□

© sudoku.today

[Sudoku Today](https://sudoku.today) ( <https://sudoku.today> )

[Samurai Sudoku](https://samuraisudoku.com) ( <https://samuraisudoku.com> )

[Newdoku](https://newdoku.com) ( <https://newdoku.com> )

[Sudoku Puzzle](https://www.sudokupuzzle.org) ( <https://www.sudokupuzzle.org> )

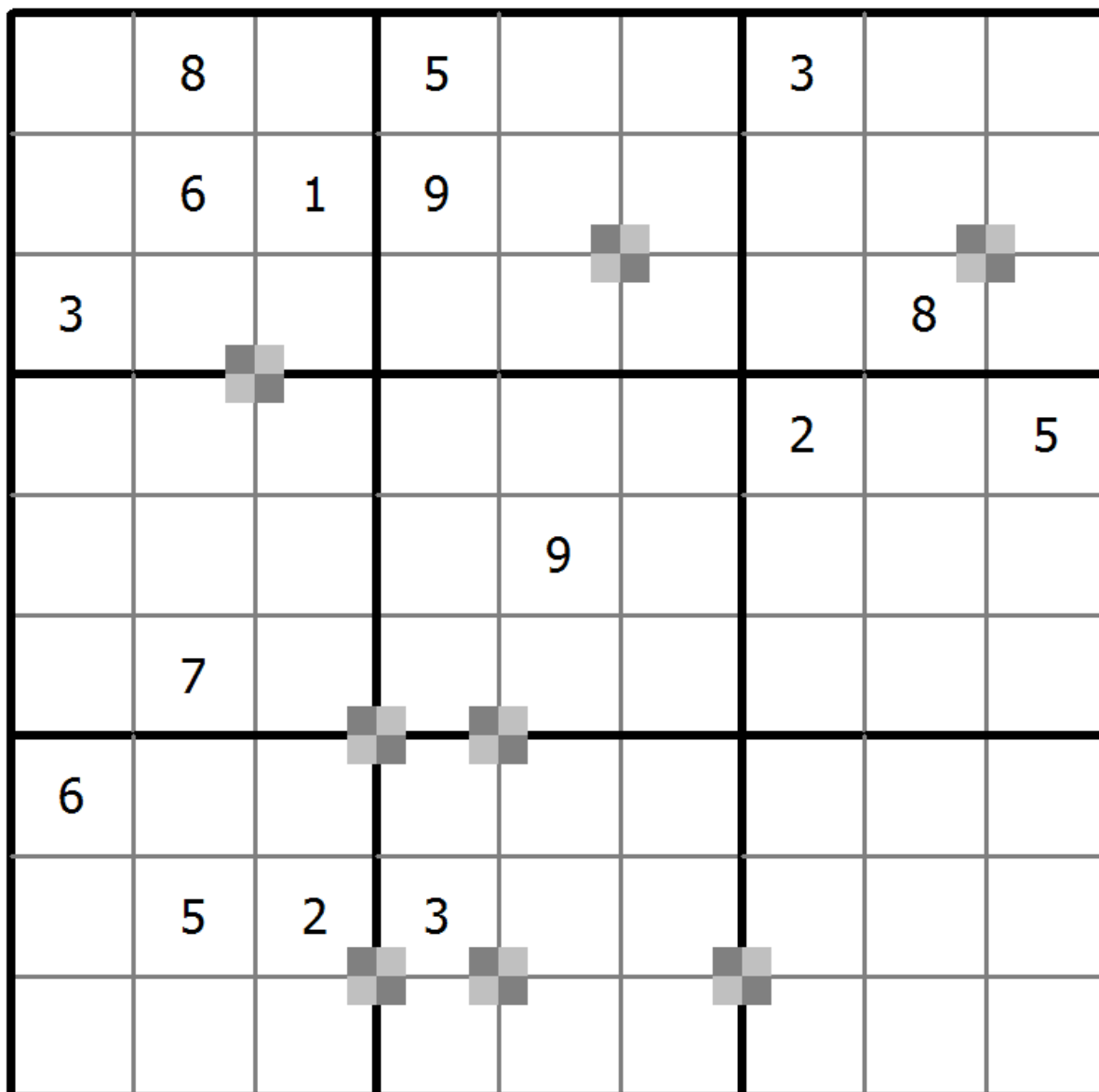
## Battenburg Sudoku

Place a digit from 1 to 9 into each of the empty squares so that each digit appears exactly once in each of the rows, columns and the nine outlined 3x3 regions.

Everywhere 2 odd and 2 even digits form a 2x2 checkerboard pattern, a Battenburg marking is given. A checkerboard pattern is a 2x2 area of cells where the top-left and bottom-right cells are of one type and the top-right and bottom-left cells are of another type. All possible dots are marked.



(Solution)



© sudoku.today

[Sudoku Today](https://sudoku.today) ( <https://sudoku.today> )

[Samurai Sudoku](https://samuraisudoku.com) ( <https://samuraisudoku.com> )

[Newdoku](https://newdoku.com) ( <https://newdoku.com> )

[Sudoku Puzzle](https://www.sudokupuzzle.org) ( <https://www.sudokupuzzle.org> )

# Battenburg Sudoku

Place a digit from 1 to 9 into each of the empty squares so that each digit appears exactly once in each of the rows, columns and the nine outlined 3x3 regions.

Everywhere 2 odd and 2 even digits form a 2x2 checkerboard pattern, a Battenburg marking is given. A checkerboard pattern is a 2x2 area of cells where the top-left and bottom-right cells are of one type and the top-right and bottom-left cells are of another type. All possible dots are marked.



(Solution)

		3						
2				7				1
				2				3
						7		8
						5		
	6		4	1				
1		5	3					

© sudoku.today

[Sudoku Today](https://sudoku.today) ( <https://sudoku.today> )

[Samurai Sudoku](https://samuraisudoku.com) ( <https://samuraisudoku.com> )

[Newdoku](https://newdoku.com) ( <https://newdoku.com> )

[Sudoku Puzzle](https://www.sudokupuzzle.org) ( <https://www.sudokupuzzle.org> )

# Creasing Sudoku

Place a digit from 1 to 9 into each of the empty squares so that each digit appears exactly once in each of the rows, columns and the nine outlined 3x3 regions.

Digits along each line are monotonically increasing or decreasing.



(Solution)

		6	4			1		
					5			
						9		
		4						
			3					
						8		9
4								

© sudoku.today

[Sudoku Today](https://sudoku.today) ( <https://sudoku.today> )

[Samurai Sudoku](https://samuraisudoku.com) ( <https://samuraisudoku.com> )

[Newdoku](https://newdoku.com) ( <https://newdoku.com> )

[Sudoku Puzzle](https://www.sudokupuzzle.org) ( <https://www.sudokupuzzle.org> )



## Multi Diagonal Sudoku

Place a digit from 1 to 9 into each of the empty squares so that each digit appears exactly once in each of the rows, columns and the nine outlined 3x3 regions.

Digits do not repeat along the marked diagonals.



(Solution)

5	9		2	8		3		
1					7			
			9	3		1		
	4		1	7				
	2						8	
				6	2		1	
		3		1	9			
			5					1
		9		2	3		6	5

© sudoku.today

[Sudoku Today](https://sudoku.today) ( <https://sudoku.today> )

[Samurai Sudoku](https://samuraisudoku.com) ( <https://samuraisudoku.com> )

[Newdoku](https://newdoku.com) ( <https://newdoku.com> )

[Sudoku Puzzle](https://www.sudokupuzzle.org) ( <https://www.sudokupuzzle.org> )

### Hybrid Sudoku ( X Sums + Greater Than )

Place a digit from 1 to 9 into each of the empty squares so that each digit appears exactly once in each of the rows, columns and the nine outlined 3x3 regions.

Each number outside the grid is the sum of the first X numbers placed in the corresponding direction, where X is equal to the first number placed in that direction.



(Solution)

Digits have to be placed in accordance with the "greater than" signs.

	20	42	16	32	5			
26								
	<		1		>			
		>		<			<	45
						>	>	7
25		<			>			
11				>		<		
				>				22
42	>	>	<		5	<		19
				<			>	43
	18	37	33				44	

© sudoku.today

[Sudoku Today](https://sudoku.today) ( https://sudoku.today )  
[Samurai Sudoku](https://samuraisudoku.com) ( https://samuraisudoku.com )

[Newdoku](https://newdoku.com) ( https://newdoku.com )  
[Sudoku Puzzle](https://www.sudoku-puzzle.org) ( https://www.sudoku-puzzle.org )

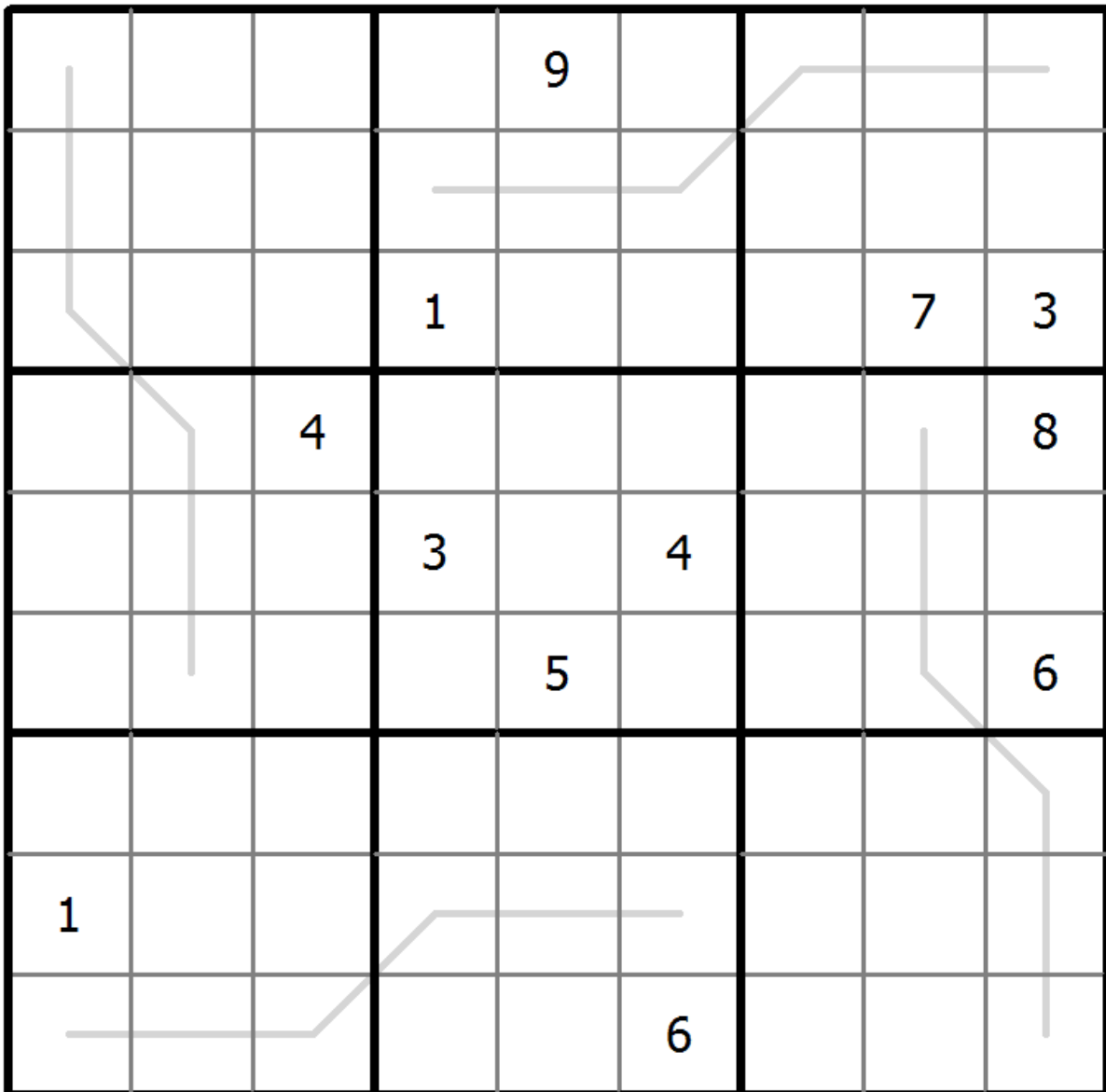
## Palindrome Sudoku

Place a digit from 1 to 9 into each of the empty squares so that each digit appears exactly once in each of the rows, columns and the nine outlined 3x3 regions.

Digits along each line read the same from both directions.



(Solution)



© sudoku.today

[Sudoku Today](https://sudoku.today) ( <https://sudoku.today> )

[Samurai Sudoku](https://samuraisudoku.com) ( <https://samuraisudoku.com> )

[Newdoku](https://newdoku.com) ( <https://newdoku.com> )

[Sudoku Puzzle](https://www.sudokupuzzle.org) ( <https://www.sudokupuzzle.org> )

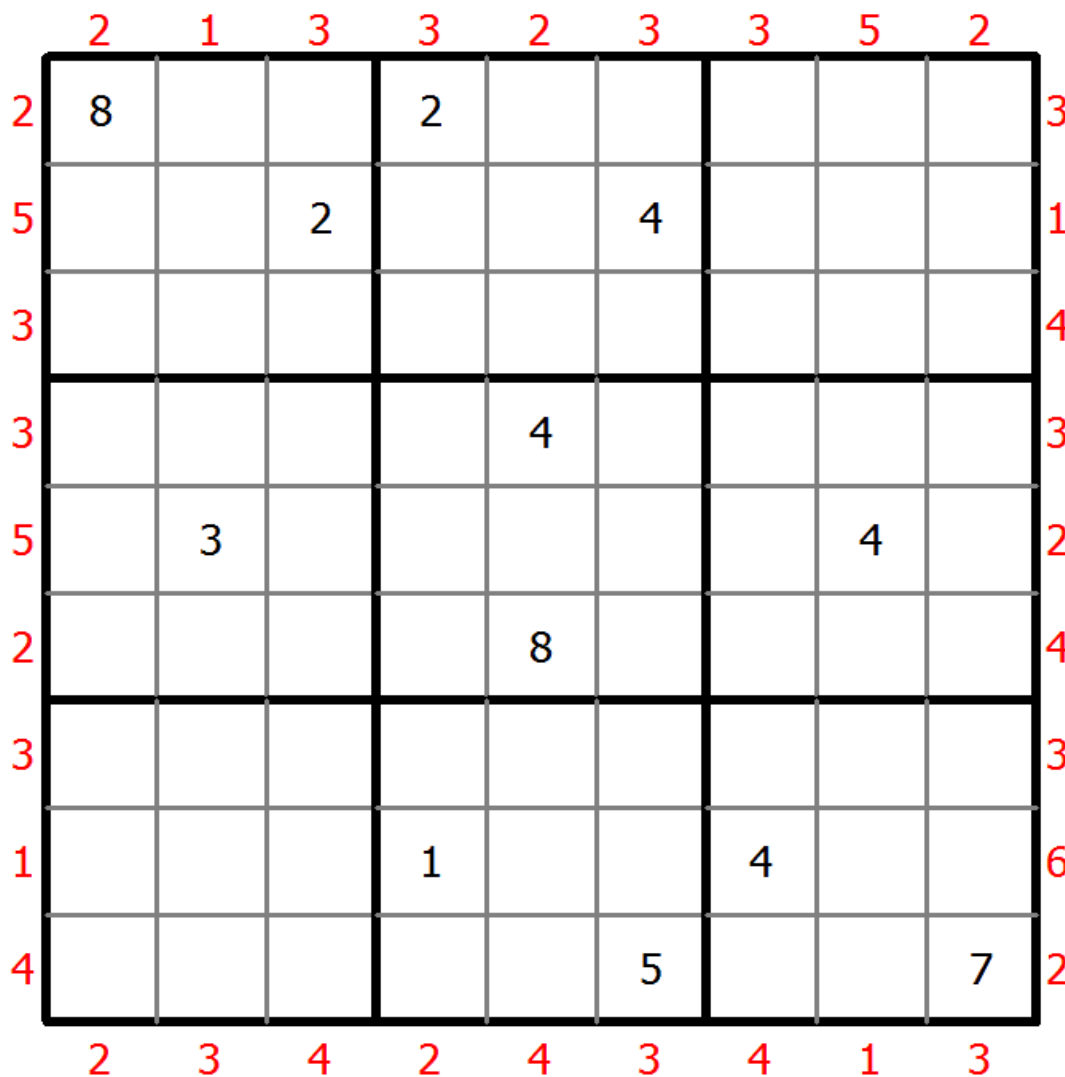
# Skyscrapers Sudoku

Place a digit from 1 to 9 into each of the empty squares so that each digit appears exactly once in each of the rows, columns and the nine outlined 3x3 regions.

Consider each number to be the height of a building. The numbers outside the grid indicate how many buildings can be seen when looking in that direction (taller buildings conceal smaller buildings behind them).



(Solution)



© sudoku.today

[Sudoku Today](https://sudoku.today) ( <https://sudoku.today> )

[Samurai Sudoku](https://samuraisudoku.com) ( <https://samuraisudoku.com> )

[Newdoku](https://newdoku.com) ( <https://newdoku.com> )

[Sudoku Puzzle](https://www.sudokupuzzle.org) ( <https://www.sudokupuzzle.org> )

## Classic Sudoku

Place a digit from 1 to 9 into each of the empty squares so that each digit appears exactly once in each of the rows, columns and the nine outlined 3x3 regions.



(Solution)

	1			5				3
	7							5
	6	8	1		9			
			3	2				9
2			6		7			8
7				1	4			
			2		3	7	8	
4							9	
8				4			3	

© sudoku.today

[Sudoku Today](https://sudoku.today) ( <https://sudoku.today> )

[Samurai Sudoku](https://samuraisudoku.com) ( <https://samuraisudoku.com> )

[Newdoku](https://newdoku.com) ( <https://newdoku.com> )

[Sudoku Puzzle](https://www.sudokupuzzle.org) ( <https://www.sudokupuzzle.org> )

## Classic Sudoku

Place a digit from 1 to 9 into each of the empty squares so that each digit appears exactly once in each of the rows, columns and the nine outlined 3x3 regions.



(Solution)

5				2	3	9		
	1	9					3	
					5			
		3			9		5	
2				4				8
	9		5			1		
			4					
	7					4	6	
		1	9	3				2

© sudoku.today

[Sudoku Today](https://sudoku.today) ( <https://sudoku.today> )

[Samurai Sudoku](https://samuraisudoku.com) ( <https://samuraisudoku.com> )

[Newdoku](https://newdoku.com) ( <https://newdoku.com> )

[Sudoku Puzzle](https://www.sudokupuzzle.org) ( <https://www.sudokupuzzle.org> )

## Classic Sudoku

Place a digit from 1 to 9 into each of the empty squares so that each digit appears exactly once in each of the rows, columns and the nine outlined 3x3 regions.



(Solution)

	6				7			
		2						7
4	1				9		5	
2	4	9		8				
				2				
				7		2	1	4
	7		1				6	2
3						4		
			5				8	

© sudoku.today

[Sudoku Today](https://sudoku.today) ( <https://sudoku.today> )

[Samurai Sudoku](https://samuraisudoku.com) ( <https://samuraisudoku.com> )

[Newdoku](https://newdoku.com) ( <https://newdoku.com> )

[Sudoku Puzzle](https://www.sudokupuzzle.org) ( <https://www.sudokupuzzle.org> )

## Classic Sudoku

Place a digit from 1 to 9 into each of the empty squares so that each digit appears exactly once in each of the rows, columns and the nine outlined 3x3 regions.



(Solution)

6		5		9				
			1					
		3			2			8
	4				8	1		7
2								5
8		6	2				4	
9			6			8		
					3			
				5		9		6

© sudoku.today

[Sudoku Today](https://sudoku.today) ( <https://sudoku.today> )

[Samurai Sudoku](https://samuraisudoku.com) ( <https://samuraisudoku.com> )

[Newdoku](https://newdoku.com) ( <https://newdoku.com> )

[Sudoku Puzzle](https://www.sudokupuzzle.org) ( <https://www.sudokupuzzle.org> )



## Classic Sudoku

Place a digit from 1 to 9 into each of the empty squares so that each digit appears exactly once in each of the rows, columns and the nine outlined 3x3 regions.



(Solution)

		5						8
	1		6		7			
6						4	1	
		2			1			
9	5						4	6
			5			9		
	6	1						5
			8		9		7	
4						8		

© sudoku.today

[Sudoku Today](https://sudoku.today) ( <https://sudoku.today> )

[Samurai Sudoku](https://samuraisudoku.com) ( <https://samuraisudoku.com> )

[Newdoku](https://newdoku.com) ( <https://newdoku.com> )

[Sudoku Puzzle](https://www.sudokupuzzle.org) ( <https://www.sudokupuzzle.org> )

## Classic Sudoku

Place a digit from 1 to 9 into each of the empty squares so that each digit appears exactly once in each of the rows, columns and the nine outlined 3x3 regions.



(Solution)

2		3						8
					7			
	7			9		4	1	
					5	3	7	
		9				6		
	3	1	8					
	9	7		8			5	
			3					
6						9		4

© sudoku.today

[Sudoku Today](https://sudoku.today) ( <https://sudoku.today> )

[Samurai Sudoku](https://samuraisudoku.com) ( <https://samuraisudoku.com> )

[Newdoku](https://newdoku.com) ( <https://newdoku.com> )

[Sudoku Puzzle](https://www.sudokupuzzle.org) ( <https://www.sudokupuzzle.org> )

## Classic Sudoku

Place a digit from 1 to 9 into each of the empty squares so that each digit appears exactly once in each of the rows, columns and the nine outlined 3x3 regions.



(Solution)

			3			9	8	
				7			5	4
	8					6		
	6		1		5			
	5						9	
			4		9		3	
		3					2	
4	2			5				
	1	7			6			

© sudoku.today

[Sudoku Today](https://sudoku.today) ( <https://sudoku.today> )

[Samurai Sudoku](https://samuraisudoku.com) ( <https://samuraisudoku.com> )

[Newdoku](https://newdoku.com) ( <https://newdoku.com> )

[Sudoku Puzzle](https://www.sudokupuzzle.org) ( <https://www.sudokupuzzle.org> )

## Classic Sudoku

Place a digit from 1 to 9 into each of the empty squares so that each digit appears exactly once in each of the rows, columns and the nine outlined 3x3 regions.



(Solution)

3	8			9		5		
	6						7	
		2			1	8		
			4					1
			6		2			
4					8			
		6	5			1		
	9						3	
		4		6			8	9

© sudoku.today

[Sudoku Today](https://sudoku.today) ( <https://sudoku.today> )

[Samurai Sudoku](https://samuraisudoku.com) ( <https://samuraisudoku.com> )

[Newdoku](https://newdoku.com) ( <https://newdoku.com> )

[Sudoku Puzzle](https://www.sudokupuzzle.org) ( <https://www.sudokupuzzle.org> )

## Classic Sudoku

Place a digit from 1 to 9 into each of the empty squares so that each digit appears exactly once in each of the rows, columns and the nine outlined 3x3 regions.



(Solution)

		1	4				6	
4		2		6			9	
		6					5	
		7			9			
	6			1			4	
			5			6		
	3					5		
	2			3		9		1
	1				5	7		

© sudoku.today

[Sudoku Today](https://sudoku.today) ( <https://sudoku.today> )

[Samurai Sudoku](https://samuraisudoku.com) ( <https://samuraisudoku.com> )

[Newdoku](https://newdoku.com) ( <https://newdoku.com> )

[Sudoku Puzzle](https://www.sudokupuzzle.org) ( <https://www.sudokupuzzle.org> )

## Classic Sudoku

Place a digit from 1 to 9 into each of the empty squares so that each digit appears exactly once in each of the rows, columns and the nine outlined 3x3 regions.



(Solution)

		6	1		9			
	3			5		6		
		9				1		8
7			3				5	
				4				
	8				5			7
1		8				7		
		2		6			8	
			9		2	4		

© sudoku.today

[Sudoku Today](https://sudoku.today) ( <https://sudoku.today> )

[Samurai Sudoku](https://samuraisudoku.com) ( <https://samuraisudoku.com> )

[Newdoku](https://newdoku.com) ( <https://newdoku.com> )

[Sudoku Puzzle](https://www.sudokupuzzle.org) ( <https://www.sudokupuzzle.org> )

## Classic Sudoku

Place a digit from 1 to 9 into each of the empty squares so that each digit appears exactly once in each of the rows, columns and the nine outlined 3x3 regions.



(Solution)

	8	6		5			9	
	5				4	2		8
	3		5	4				
	6						7	
				2	3		5	
9		3	2				6	
	4			8		9	3	

© sudoku.today

[Sudoku Today](https://sudoku.today) ( <https://sudoku.today> )

[Samurai Sudoku](https://samuraisudoku.com) ( <https://samuraisudoku.com> )

[Newdoku](https://newdoku.com) ( <https://newdoku.com> )

[Sudoku Puzzle](https://www.sudokupuzzle.org) ( <https://www.sudokupuzzle.org> )

## Classic Sudoku

Place a digit from 1 to 9 into each of the empty squares so that each digit appears exactly once in each of the rows, columns and the nine outlined 3x3 regions.



(Solution)

			9		7	6		1
			3			5		
8			5				4	
6								
	5	9		7		2	8	
								7
	9				4			3
		1			8			
2		5	1		3			

© sudoku.today

[Sudoku Today](https://sudoku.today) ( <https://sudoku.today> )

[Samurai Sudoku](https://samuraisudoku.com) ( <https://samuraisudoku.com> )

[Newdoku](https://newdoku.com) ( <https://newdoku.com> )

[Sudoku Puzzle](https://www.sudokupuzzle.org) ( <https://www.sudokupuzzle.org> )



## Classic Sudoku

Place a digit from 1 to 9 into each of the empty squares so that each digit appears exactly once in each of the rows, columns and the nine outlined 3x3 regions.



(Solution)

2	5	9						
		1			4			
4				6	5			
						5	8	
		7	6		1	2		
	6	4						
			9	5				4
			1			7		
						1	5	3

© sudoku.today

[Sudoku Today](https://sudoku.today) ( <https://sudoku.today> )

[Samurai Sudoku](https://samuraisudoku.com) ( <https://samuraisudoku.com> )

[Newdoku](https://newdoku.com) ( <https://newdoku.com> )

[Sudoku Puzzle](https://www.sudokupuzzle.org) ( <https://www.sudokupuzzle.org> )

## Classic Sudoku

Place a digit from 1 to 9 into each of the empty squares so that each digit appears exactly once in each of the rows, columns and the nine outlined 3x3 regions.



(Solution)

	5			2		4		7
		1			8			
				9	4			5
		8	3					
9								4
					9	3		
8			4	3				
			6			1		
5		6		1			3	

© sudoku.today

[Sudoku Today](https://sudoku.today) ( <https://sudoku.today> )

[Samurai Sudoku](https://samuraisudoku.com) ( <https://samuraisudoku.com> )

[Newdoku](https://newdoku.com) ( <https://newdoku.com> )

[Sudoku Puzzle](https://www.sudokupuzzle.org) ( <https://www.sudokupuzzle.org> )

## Classic Sudoku

Place a digit from 1 to 9 into each of the empty squares so that each digit appears exactly once in each of the rows, columns and the nine outlined 3x3 regions.



(Solution)

2				9	5	3		
5	6						8	
			7			9		
			1					9
	1						2	
6					8			
		3			4			
	8						5	1
		1	5	6				7

© sudoku.today

[Sudoku Today](https://sudoku.today) ( <https://sudoku.today> )

[Samurai Sudoku](https://samuraisudoku.com) ( <https://samuraisudoku.com> )

[Newdoku](https://newdoku.com) ( <https://newdoku.com> )

[Sudoku Puzzle](https://www.sudokupuzzle.org) ( <https://www.sudokupuzzle.org> )

## Classic Sudoku

Place a digit from 1 to 9 into each of the empty squares so that each digit appears exactly once in each of the rows, columns and the nine outlined 3x3 regions.



(Solution)

			8				3	
		1		5			7	
4				3	2		5	
		5	7			4		
		3			4	2		
	8		6	2				1
	9			7		6		
	4				8			

© sudoku.today

[Sudoku Today](https://sudoku.today) ( <https://sudoku.today> )

[Samurai Sudoku](https://samuraisudoku.com) ( <https://samuraisudoku.com> )

[Newdoku](https://newdoku.com) ( <https://newdoku.com> )

[Sudoku Puzzle](https://www.sudokupuzzle.org) ( <https://www.sudokupuzzle.org> )

## Classic Sudoku

Place a digit from 1 to 9 into each of the empty squares so that each digit appears exactly once in each of the rows, columns and the nine outlined 3x3 regions.



(Solution)

			1				7	
3		1			7			5
6	8							
5				8			2	
		8				3		
	6			2				1
							6	8
1			7			9		3
	9				6			

© sudoku.today

[Sudoku Today](https://sudoku.today) ( <https://sudoku.today> )

[Samurai Sudoku](https://samuraisudoku.com) ( <https://samuraisudoku.com> )

[Newdoku](https://newdoku.com) ( <https://newdoku.com> )

[Sudoku Puzzle](https://www.sudokupuzzle.org) ( <https://www.sudokupuzzle.org> )

## Classic Sudoku

Place a digit from 1 to 9 into each of the empty squares so that each digit appears exactly once in each of the rows, columns and the nine outlined 3x3 regions.



(Solution)

9	8					4		
					5			9
		3			7	2		
				2			1	5
	3						6	
6	1			9				
		8	6			5		
4			1					
		2					9	8

© sudoku.today

[Sudoku Today](https://sudoku.today) ( <https://sudoku.today> )

[Samurai Sudoku](https://samuraisudoku.com) ( <https://samuraisudoku.com> )

[Newdoku](https://newdoku.com) ( <https://newdoku.com> )

[Sudoku Puzzle](https://www.sudokupuzzle.org) ( <https://www.sudokupuzzle.org> )

## Classic Sudoku

Place a digit from 1 to 9 into each of the empty squares so that each digit appears exactly once in each of the rows, columns and the nine outlined 3x3 regions.



(Solution)

	5			2				
2	1					9		
7					6			1
			5					
9		8	3		7	4		6
					8			
3			2					7
		7					1	5
				6			9	

© sudoku.today

[Sudoku Today](https://sudoku.today) ( <https://sudoku.today> )

[Samurai Sudoku](https://samuraisudoku.com) ( <https://samuraisudoku.com> )

[Newdoku](https://newdoku.com) ( <https://newdoku.com> )

[Sudoku Puzzle](https://www.sudokupuzzle.org) ( <https://www.sudokupuzzle.org> )

## Classic Sudoku

Place a digit from 1 to 9 into each of the empty squares so that each digit appears exactly once in each of the rows, columns and the nine outlined 3x3 regions.



(Solution)

4								
		1	5	6			9	
		2		7			5	
8					7			9
			9		4			
3			1					7
	7			8		1		
	6			9	5	3		
								8

© sudoku.today

[Sudoku Today](https://sudoku.today) ( <https://sudoku.today> )

[Samurai Sudoku](https://samuraisudoku.com) ( <https://samuraisudoku.com> )

[Newdoku](https://newdoku.com) ( <https://newdoku.com> )

[Sudoku Puzzle](https://www.sudokupuzzle.org) ( <https://www.sudokupuzzle.org> )